



EVERYTHING'S INCLUDED®

REMARKS					
DATE	12/2/18				
REV. NO.	1	2	3	4	5

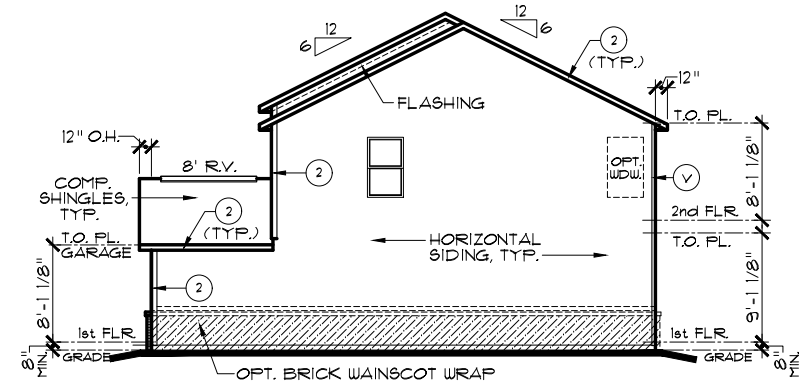
DATE	12/2/18
REV. NO.	1

THESE PLANS AND THE DESIGNS CONTAINED HEREIN ARE THE SOLE PROPERTY OF LENNAR CORPORATION. © 2018 LENNAR CORPORATION. ALL RIGHTS RESERVED. LENNAR CORPORATION EXPRESSLY RESERVES ITS COPYRIGHT AND OTHER PROPERTY RIGHTS IN THESE DESIGNS AND DRAWINGS. UNAUTHORIZED DUPLICATION OR DISTRIBUTION OF THESE PLANS IS PROHIBITED.

SET NO.	9152A0
DRAWN BY	SAM
COLLECTION	VENTURE

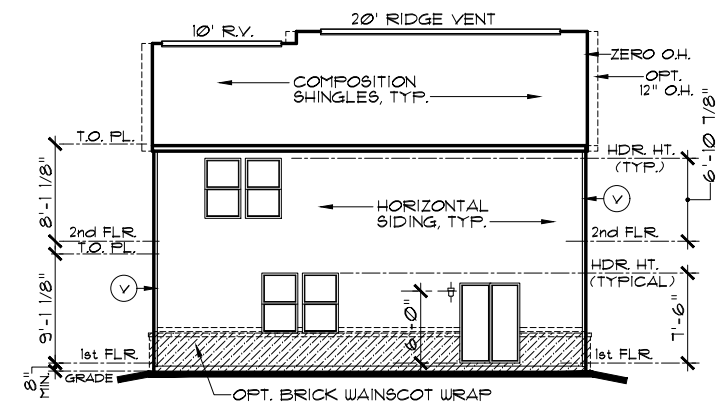
MODEL	BELMONT A
DRAWING TITLE	ELEVATIONS, ROOF PLAN
OPTION DESCRIPTION	

SHEET NO. A1.1A



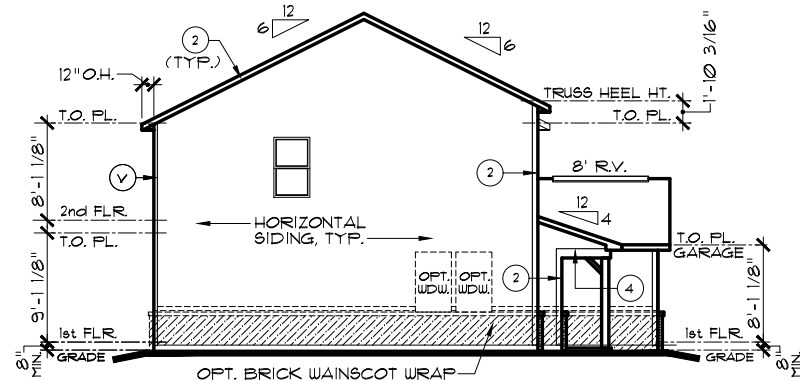
RIGHT ELEVATION

SCALE: 1/16" = 1'-0"



REAR ELEVATION

SCALE: 1/16" = 1'-0"



LEFT ELEVATION

SCALE: 1/16" = 1'-0"

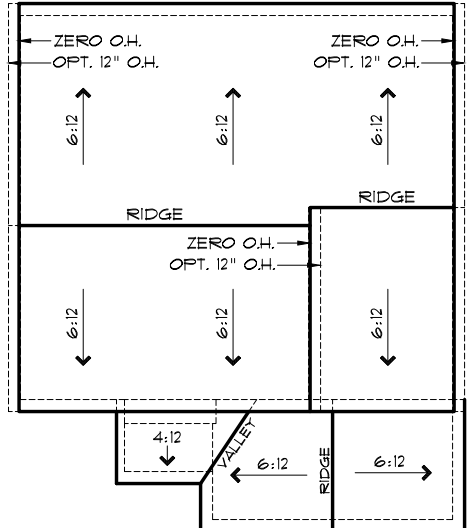
EXTERIOR TRIM KEY

⓪ VINYL CORNER	③ 1 x 8
① 1 x 4	④ 1 x 10
② 1 x 6	⑤ 1 x 12

NOTE: EXTERIOR TRIM NOTATIONS INDICATE TRIM PIECE SIZE ONLY. ACTUAL TRIM MATERIAL / FINISH PER DIVISION SPECIFICATIONS.

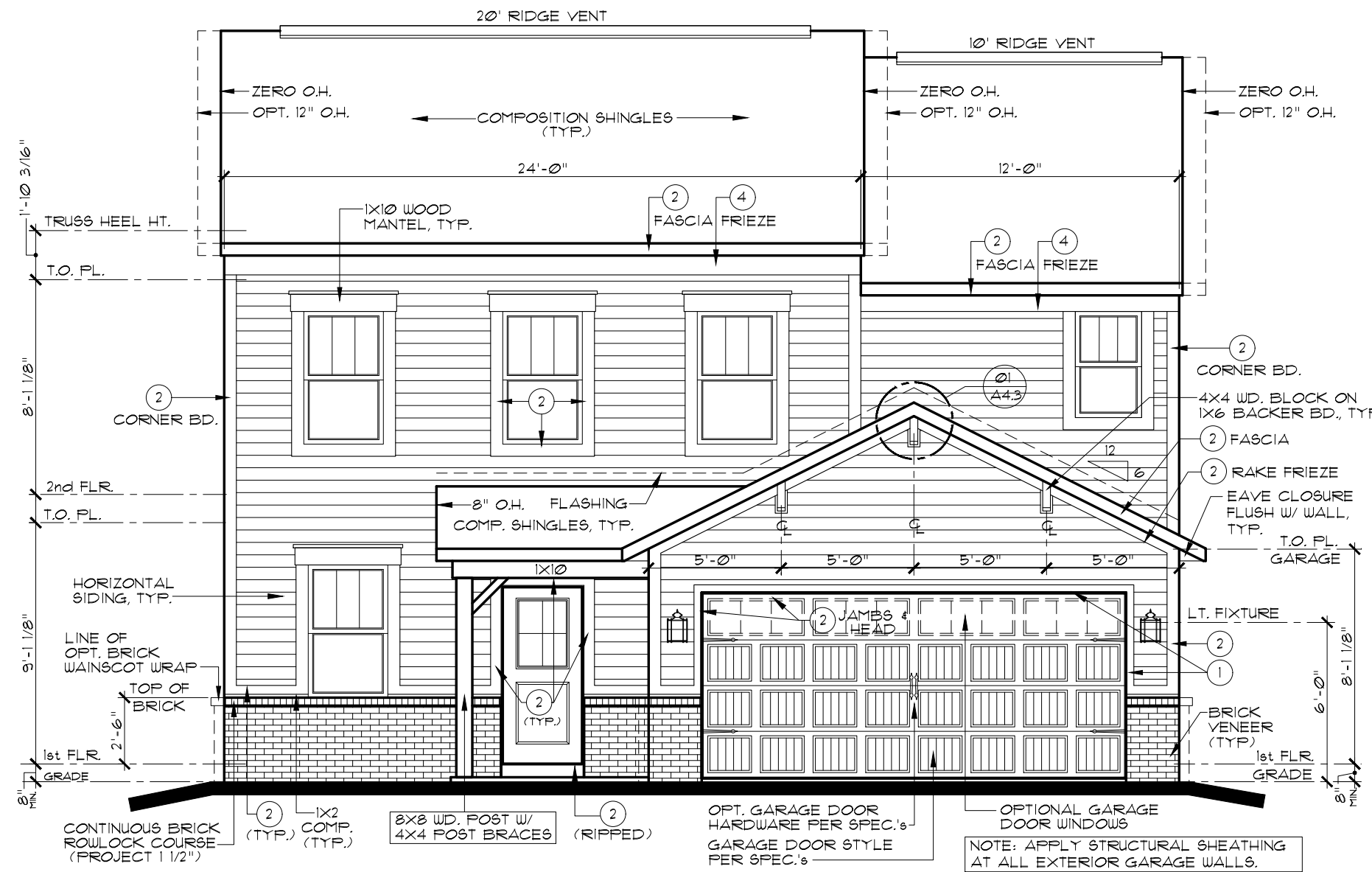
NOTE:
SIDES AND REAR WINDOW GRIDS, WHEN REQUIRED, SHALL MATCH THOSE OF FRONT ELEVATION WINDOWS

NOTE: ALL OVERHANGS TO BE 12" EXCEPT AS NOTED.



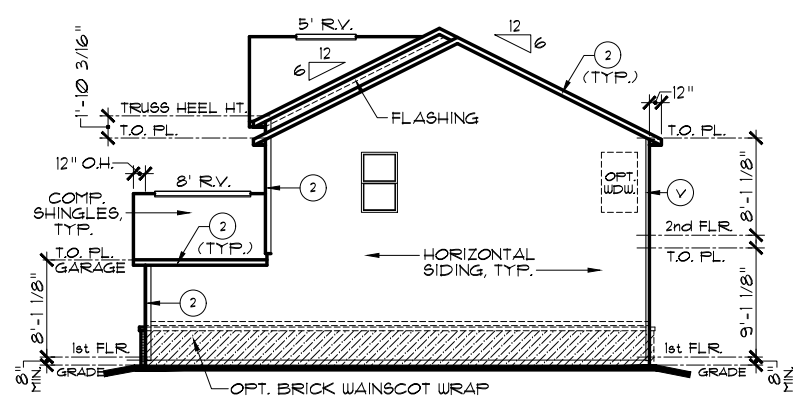
ROOF PLAN A

SCALE: 1/16" = 1'-0"



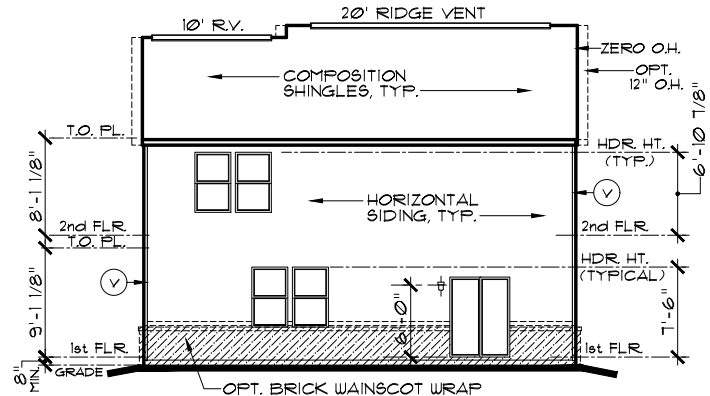
FRONT ELEVATION A

SCALE: 3/16" = 1'-0"



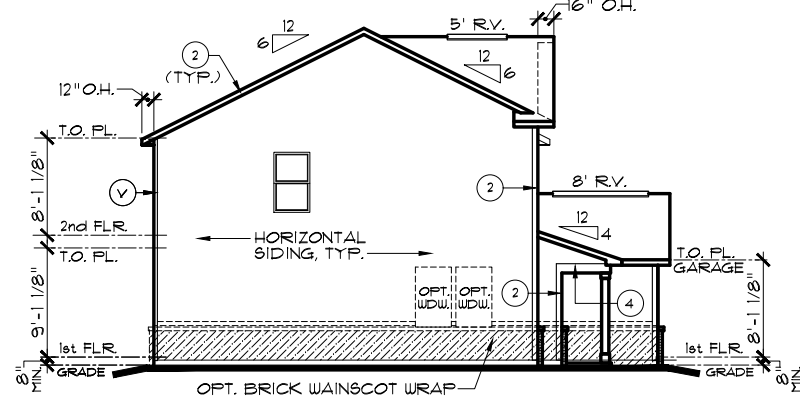
RIGHT ELEVATION

SCALE: 1/16" = 1'-0"



REAR ELEVATION

SCALE: 1/16" = 1'-0"



LEFT ELEVATION

SCALE: 1/16" = 1'-0"

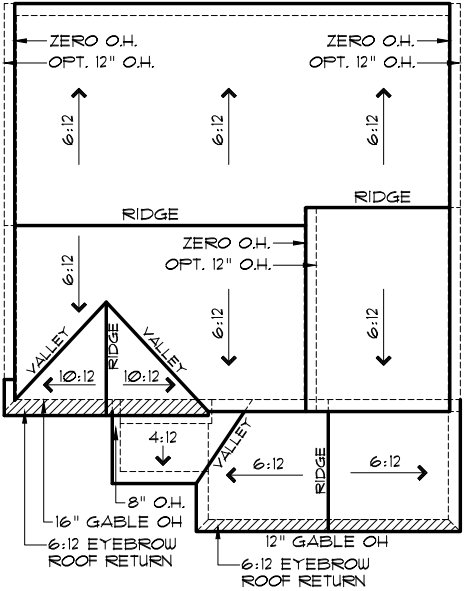
EXTERIOR TRIM KEY

○ V VINYL CORNER	○ 3 1 x 8
○ 1 1 x 4	○ 4 1 x 10
○ 2 1 x 6	○ 5 1 x 12

NOTE: EXTERIOR TRIM NOTATIONS INDICATE TRIM PIECE SIZE ONLY. ACTUAL TRIM MATERIAL / FINISH PER DIVISION SPECIFICATIONS.

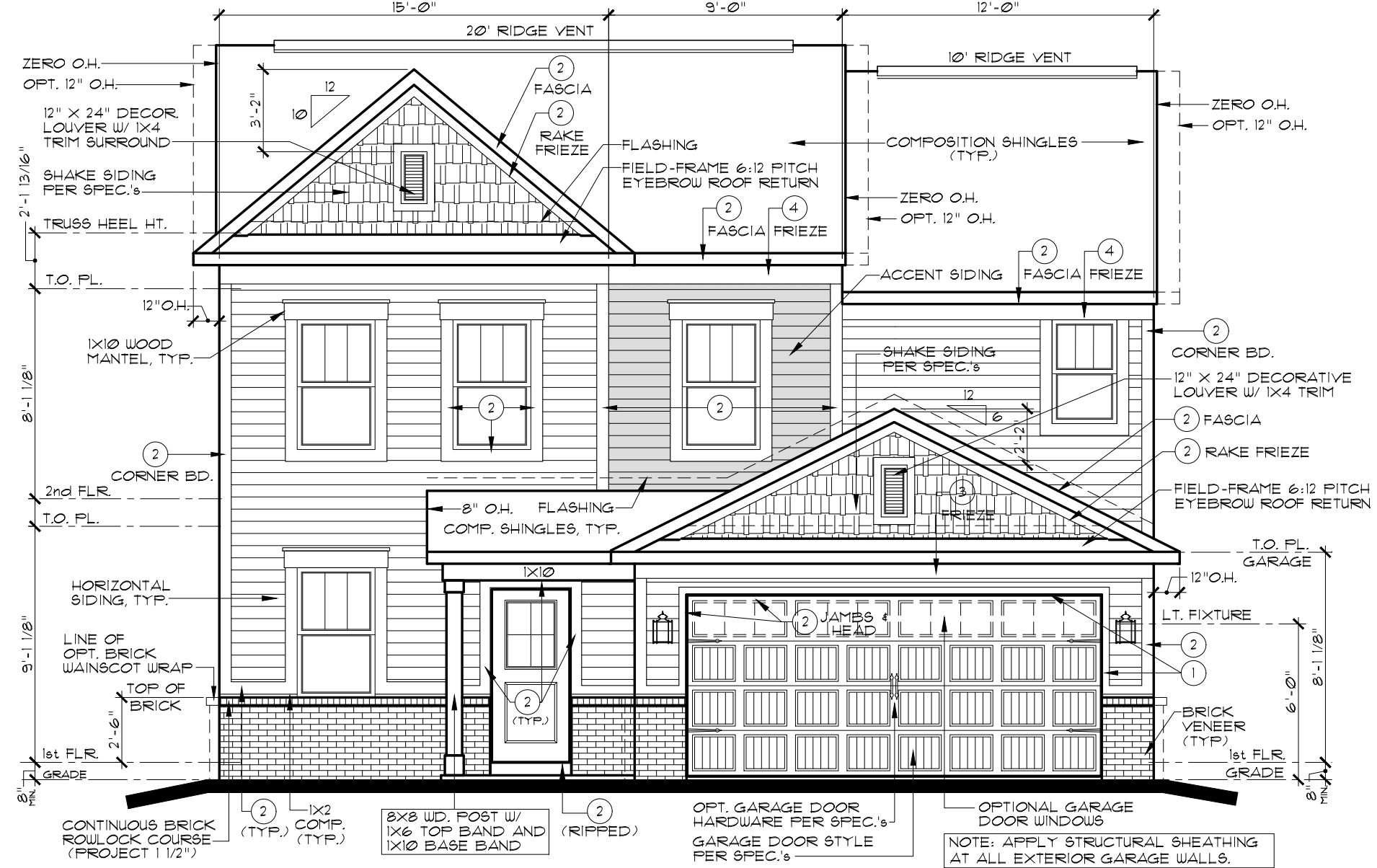
NOTE:
SIDES AND REAR WINDOW GRIDS, WHEN REQUIRED, SHALL MATCH THOSE OF FRONT ELEVATION WINDOWS

NOTE: ALL OVERHANGS TO BE 12" EXCEPT AS NOTED.



ROOF PLAN B

SCALE: 1/16" = 1'-0"



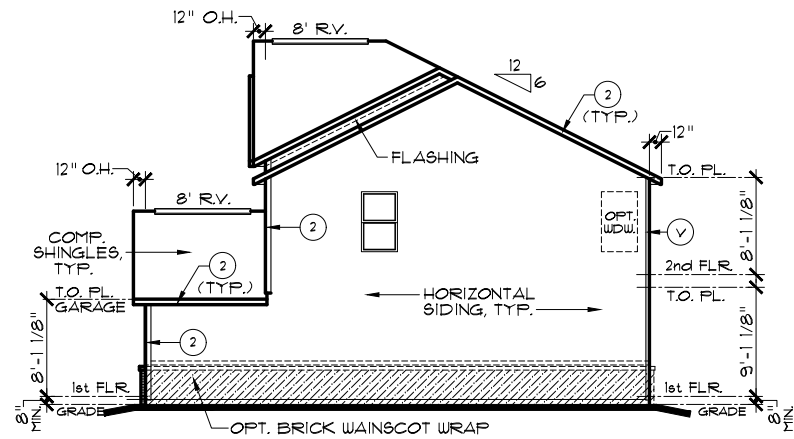
FRONT ELEVATION B

SCALE: 3/16" = 1'-0"

REVISIONS	DATE	REMARKS
1	12/2/18	FULL RELEASE
2		
3		
4		
5		

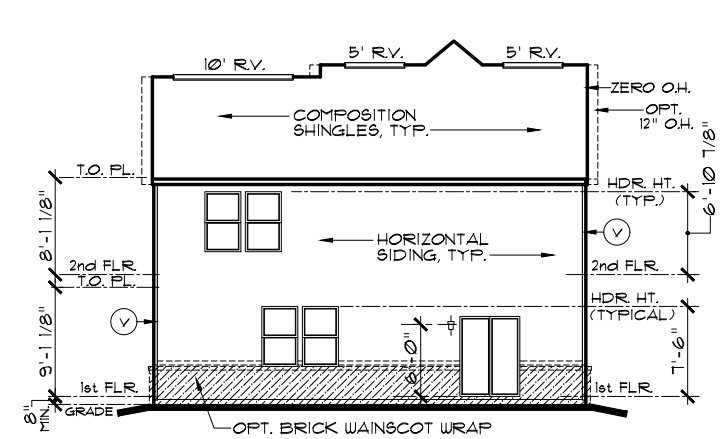
THESE PLANS AND THE DESIGNS CONTAINED HEREIN ARE THE SOLE PROPERTY OF LENNAR CORPORATION. © 2018 LENNAR CORPORATION. ALL RIGHTS RESERVED. LENNAR CORPORATION EXPRESSLY RESERVES ITS COPYRIGHT AND OTHER PROPERTY RIGHTS IN THESE DESIGNS AND DRAWINGS. UNAUTHORIZED DUPLICATION OR DISTRIBUTION OF THESE PLANS IS PROHIBITED.

MODEL	SET NO.	DRAWN BY	COLLECTION	VENTURE
BELMONT B	9152B0	SAM		
ELEVATIONS, ROOF PLAN				
OPTION DESCRIPTION				



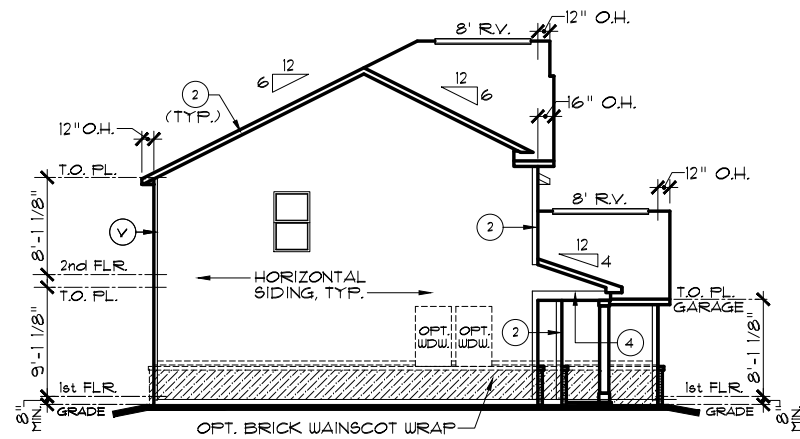
RIGHT ELEVATION

SCALE: 1/16" = 1'-0"



REAR ELEVATION

SCALE: 1/16" = 1'-0"



LEFT ELEVATION

SCALE: 1/16" = 1'-0"

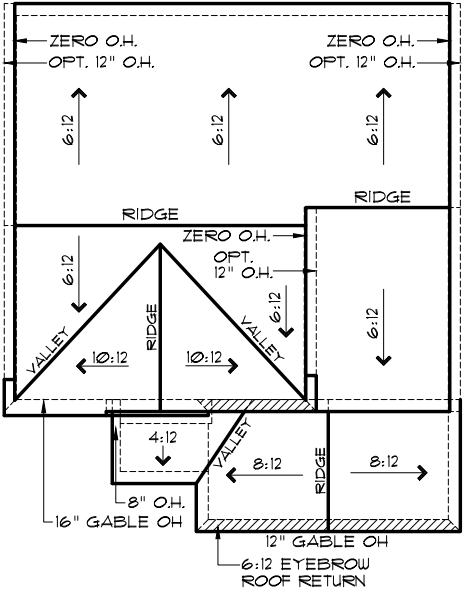
EXTERIOR TRIM KEY

○ V	VINYL CORNER	○ 3	1 x 8
○ 1	1 x 4	○ 4	1 x 10
○ 2	1 x 6	○ 5	1 x 12

NOTE: EXTERIOR TRIM NOTATIONS INDICATE TRIM PIECE SIZE ONLY. ACTUAL TRIM MATERIAL / FINISH PER DIVISION SPECIFICATIONS.

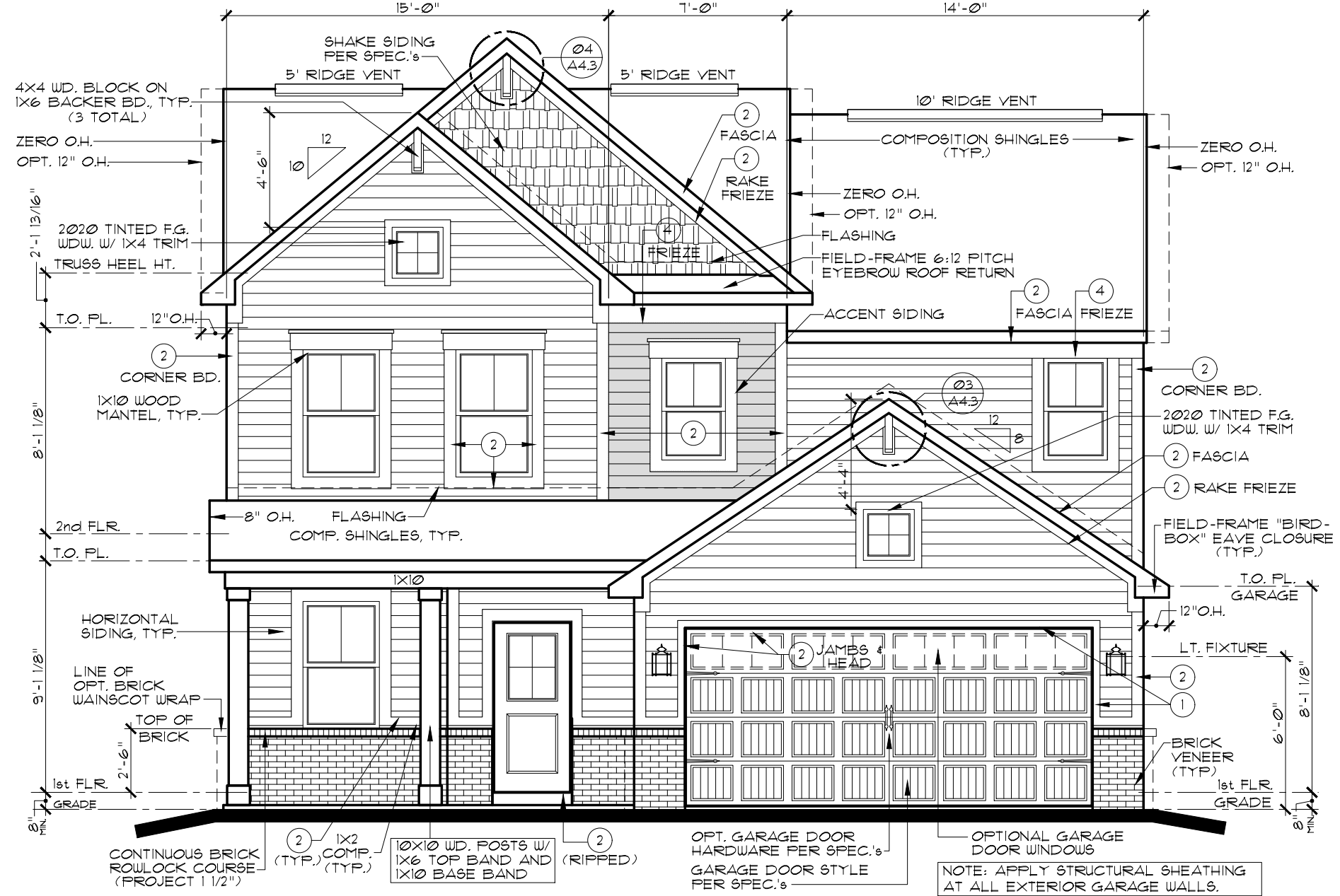
NOTE:
SIDES AND REAR WINDOW GRIDS, WHEN REQUIRED, SHALL MATCH THOSE OF FRONT ELEVATION WINDOWS

NOTE: ALL OVERHANGS TO BE 12" EXCEPT AS NOTED.



ROOF PLAN C

SCALE: 1/16" = 1'-0"



FRONT ELEVATION C

SCALE: 3/16" = 1'-0"



INDIANAPOLIS DIVISION

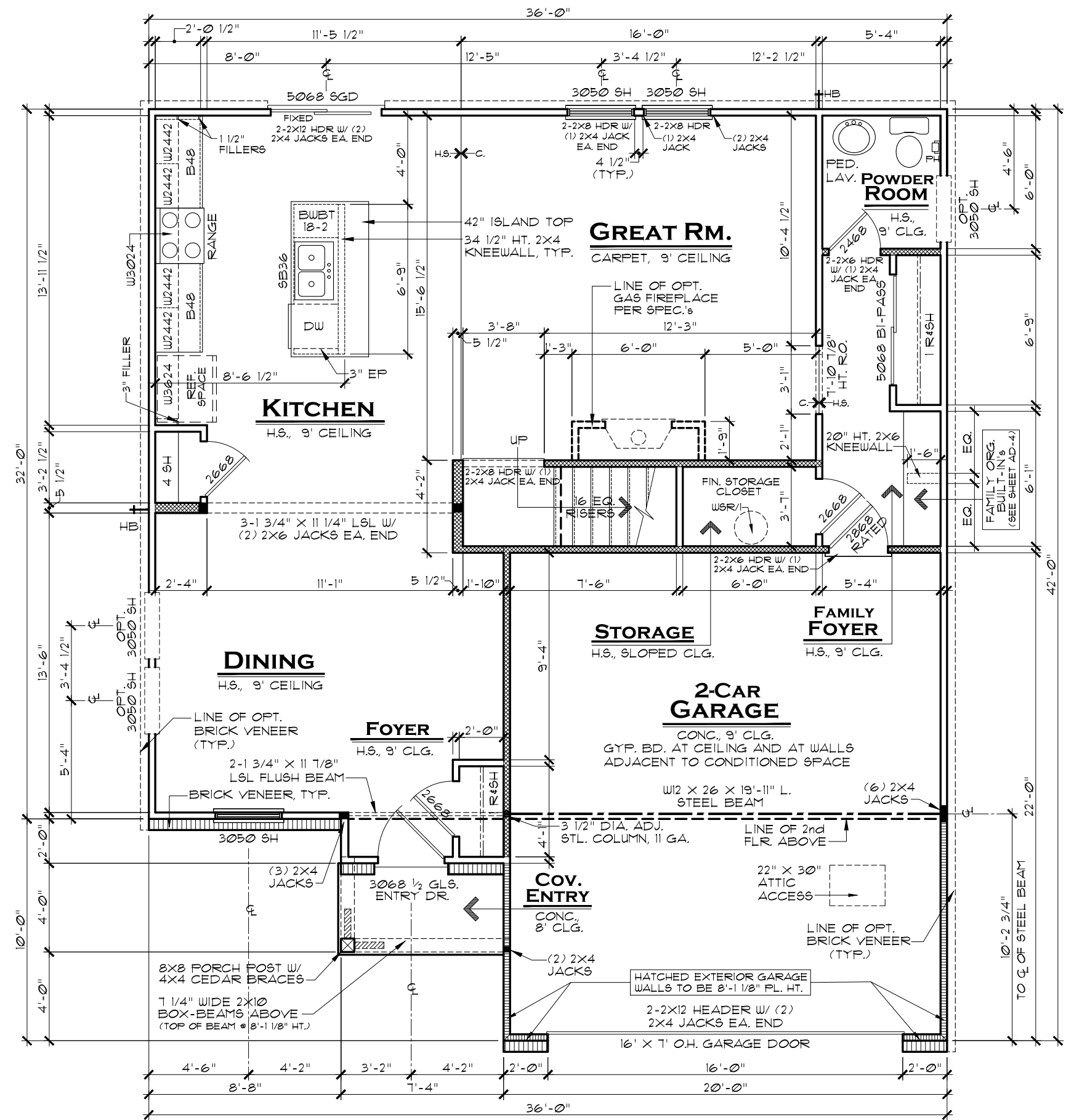
REMARKS					
DATE	12/3/18				
REV. NO.	1	2	3	4	5

FULL RELEASE

THESE PLANS AND THE DESIGNS CONTAINED HEREIN ARE THE SOLE PROPERTY OF LENNAR CORPORATION. © 2018 LENNAR CORPORATION. ALL RIGHTS RESERVED. LENNAR CORPORATION EXPRESSLY RESERVES ITS COPYRIGHT AND OTHER PROPERTY RIGHTS IN THESE DESIGNS AND DRAWINGS. UNAUTHORIZED DUPLICATION OR DISTRIBUTION OF THESE PLANS IS PROHIBITED.

LENNAR	SET NO.	9152CO	DRAWN BY	SAM	COLLECTION	VENTURE
	MODEL	BELMONT C	DRAWING TITLE	ELEVATIONS, ROOF PLAN		
			OPTION DESCRIPTION			

SHEET NO. **A1.1C**



NOTE:
 HATCHED WALL INDICATES INTERIOR LD.-BRG. WALL WITH STUDS @ 16" O.C. AND DOUBLE TOP PLATE, TYP.
 WINDOW HEADERS: 2-2X6 W/ (1) 2X4 JACK EACH END TYP., UNLESS NOTED OTHERWISE

GENERAL NOTES:

1. ALL WINDOW HEADERS HEIGHTS TO BE 7'-6" HT. UNLESS NOTED OTHERWISE.
2. 1ST FLOOR WALL HT. TO BE 9'-1 1/8", EXCEPT WHERE NOTED OTHERWISE.
3. ALL INTERIOR ROUGH OPENINGS TO BE 1'-10 7/8" HT. UNLESS NOTED OTHERWISE.

AREA CALCULATIONS	
1st FLOOR LIVING AREA:	931 SF.
2nd FLOOR LIVING AREA:	1,111 SF.
TOTAL LIVING AREA:	2,042 SF.
COVERED ENTRY:	29 SF.
GARAGE:	436 SF.
TOTAL UNDER ROOF:	2,507 SF.

MORNING RM. OPT. ADDS 120 SF.
 3-CAR FRONT-LOAD GARAGE ADDS 220 SF.

FIRST FLOOR PLAN A

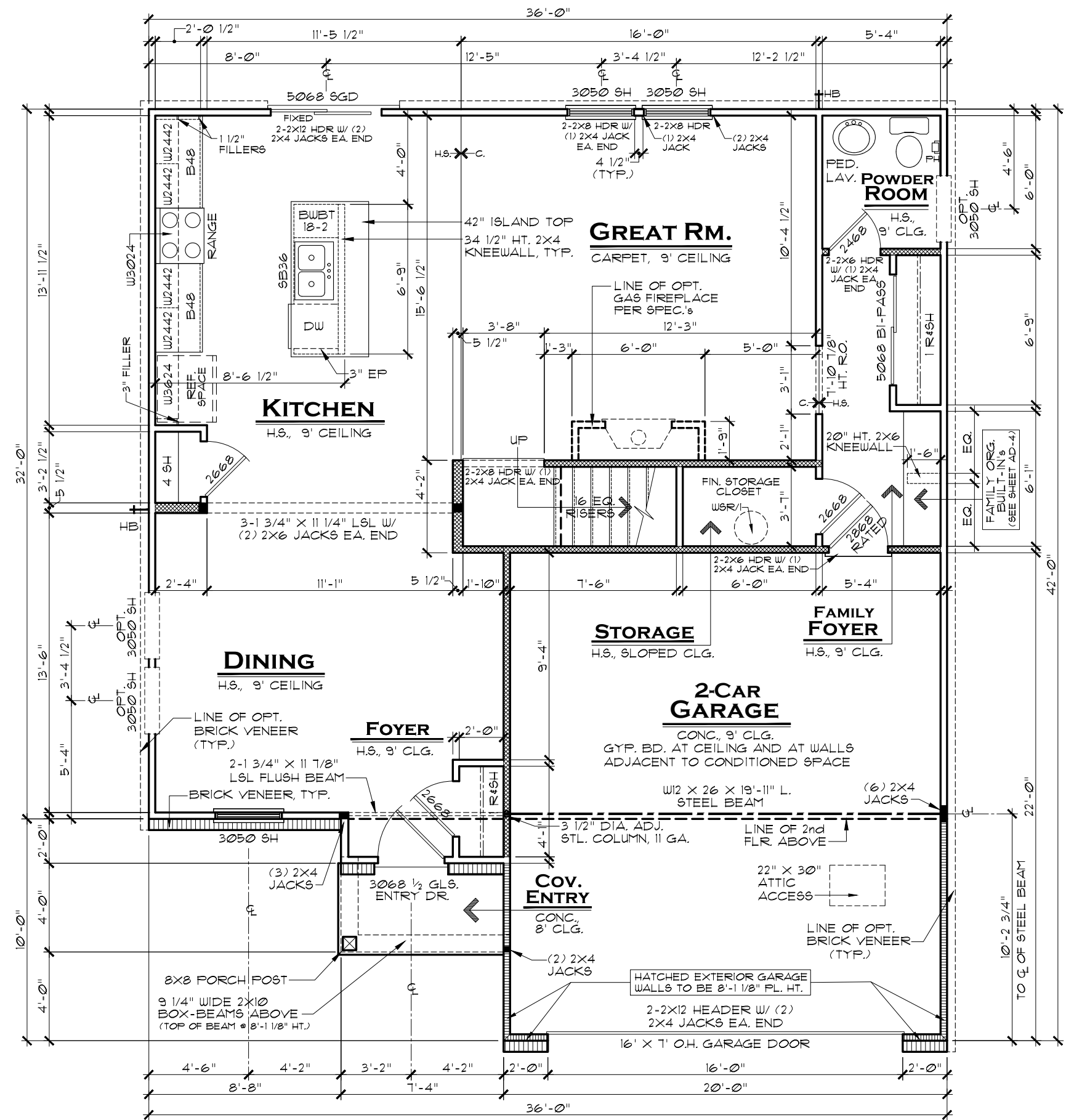
SCALE: 3/16" = 1'-0"

REVNO.	DATE	REMARKS
1	12/3/18	FULL RELEASE
2	1/2/19	UPDATED FOR STRUCTURAL
3	1/3/19	PEDISTAL SINK IN POWDER BATH
4		
5		

THESE PLANS AND THE DESIGNS CONTAINED HEREIN ARE THE SOLE PROPERTY OF LENNAR CORPORATION. © 2018 LENNAR CORPORATION. ALL RIGHTS RESERVED.
 LENNAR CORPORATION EXPRESSLY RESERVES ITS COPYRIGHT AND OTHER PROPERTY RIGHTS IN THESE DESIGNS AND DRAWINGS. UNAUTHORIZED DUPLICATION OR DISTRIBUTION OF THESE PLANS IS PROHIBITED.

LENNAR®	SET NO.	9152A0	DRAWN BY	SAM	COLLECTION	VENTURE
	MODEL	BELMONT A	DRAWING TITLE	FIRST FLOOR PLAN	OPTION DESCRIPTION	

SHEET NO.
A3.1A



NOTE:
 HATCHED WALL INDICATES INTERIOR LD.-BRG. WALL WITH STUDS @ 16" O.C. AND DOUBLE TOP PLATE, TYP.
 WINDOW HEADERS: 2-2X6 W/ (1) 2X4 JACK EACH END TYP., UNLESS NOTED OTHERWISE

GENERAL NOTES:

1. ALL WINDOW HEADERS HEIGHTS TO BE 7'-6" HT. UNLESS NOTED OTHERWISE.
2. 1ST FLOOR WALL HT. TO BE 9'-1 1/8", EXCEPT WHERE NOTED OTHERWISE.
3. ALL INTERIOR ROUGH OPENINGS TO BE 1'-10 7/8" HT. UNLESS NOTED OTHERWISE.

AREA CALCULATIONS	
1st FLOOR LIVING AREA:	931 S.F.
2nd FLOOR LIVING AREA:	1,111 S.F.
TOTAL LIVING AREA:	2,042 S.F.
COVERED ENTRY:	29 S.F.
GARAGE:	436 S.F.
TOTAL UNDER ROOF:	2,507 S.F.

MORNING RM. OPT. ADDS 120 S.F.
 3-CAR FRONT-LOAD GARAGE ADDS 220 S.F.

FIRST FLOOR PLAN B

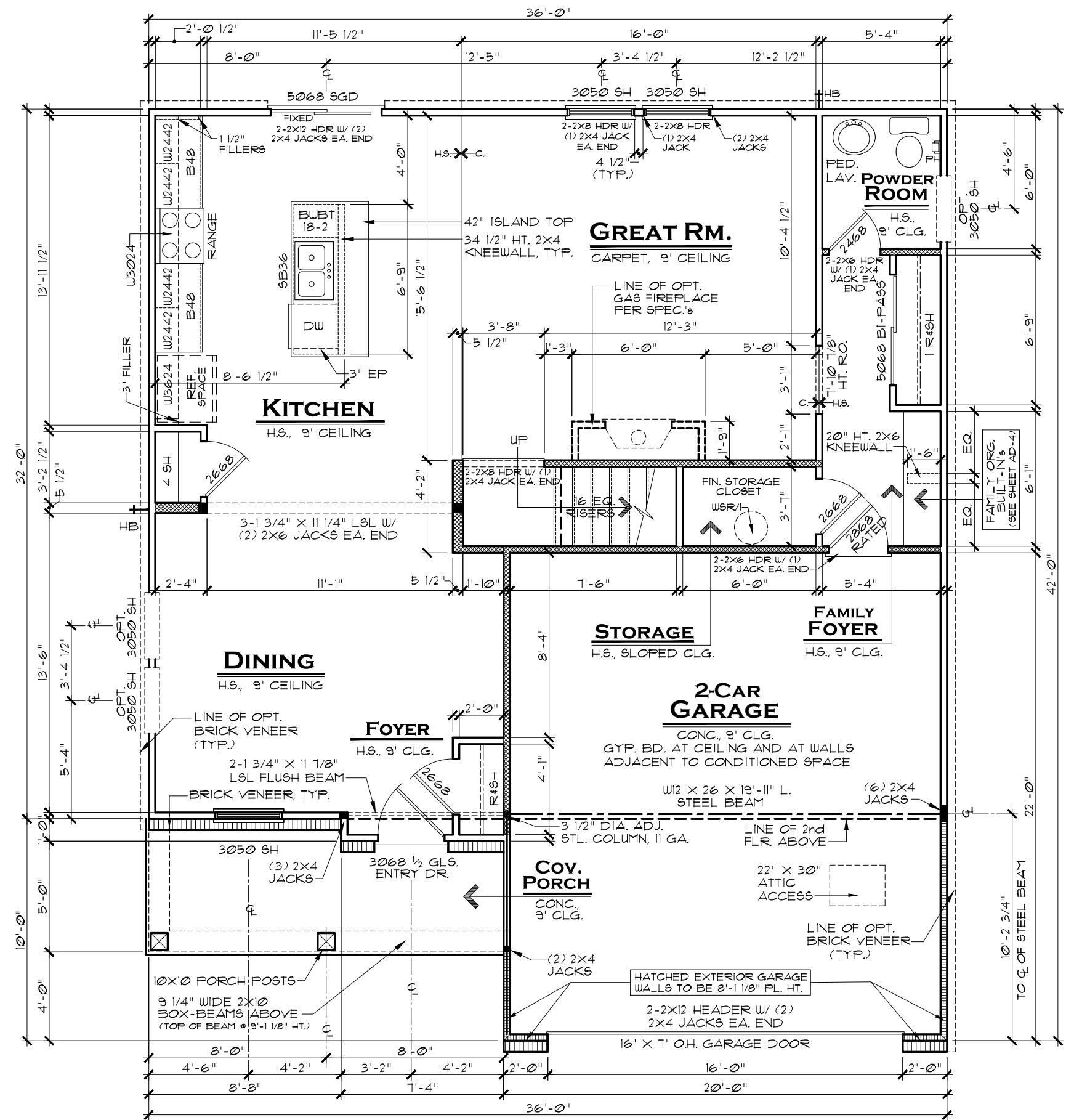
SCALE: 3/16" = 1'-0"

REVNO.	DATE	REMARKS
1	12/3/18	FULL RELEASE
2	1/2/19	UPDATED FOR STRUCTURAL
3	1/3/19	PEDISTAL SINK IN POWDER BATH
4		
5		

THESE PLANS AND THE DESIGNS CONTAINED HEREIN ARE THE SOLE PROPERTY OF LENNAR CORPORATION. © 2018 LENNAR CORPORATION. ALL RIGHTS RESERVED.
 LENNAR CORPORATION EXPRESSLY RESERVES ITS COPYRIGHT AND OTHER PROPERTY RIGHTS IN THESE DESIGNS AND DRAWINGS. UNAUTHORIZED DUPLICATION OR DISTRIBUTION OF THESE PLANS IS PROHIBITED.

LENNAR®	SET NO.	915280	DRAWN BY	SAM	COLLECTION	VENTURE
	MODEL	BELMONT B	DRAWING TITLE	FIRST FLOOR PLAN	OPTION DESCRIPTION	

SHEET NO.
A3.1B



NOTE:
 HATCHED WALL INDICATES INTERIOR LD.-BRG. WALL WITH STUDS @ 16" O.C. AND DOUBLE TOP PLATE, TYP.
 WINDOW HEADERS: 2-2X6 W/ (1) 2X4 JACK EACH END TYP., UNLESS NOTED OTHERWISE

- GENERAL NOTES:**
1. ALL WINDOW HEADERS HEIGHTS TO BE 7'-6" HT. UNLESS NOTED OTHERWISE.
 2. 1ST FLOOR WALL HT. TO BE 9'-1 1/8", EXCEPT WHERE NOTED OTHERWISE.
 3. ALL INTERIOR ROUGH OPENINGS TO BE 7'-10 7/8" HT. UNLESS NOTED OTHERWISE.

AREA CALCULATIONS

1st FLOOR LIVING AREA:	923 S.F.
2nd FLOOR LIVING AREA:	1,111 S.F.
TOTAL LIVING AREA:	2,034 S.F.
COVERED PORCH:	89 S.F.
GARAGE:	436 S.F.
TOTAL UNDER ROOF:	2,559 S.F.

MORNING RM. OPT. ADDS 120 S.F.
 3-CAR FRONT-LOAD GARAGE ADDS 220 S.F.

FIRST FLOOR PLAN C

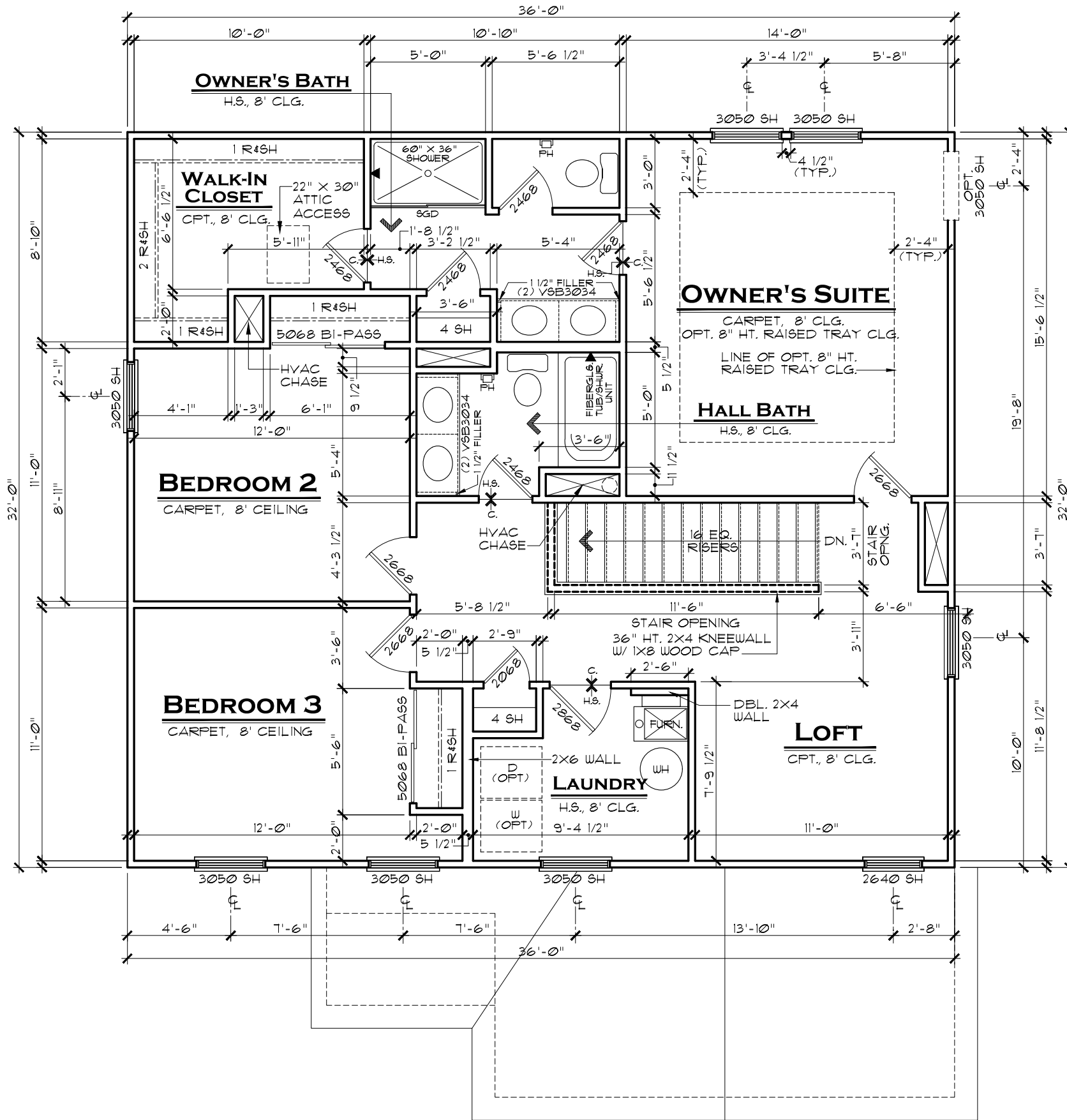
SCALE: 3/16" = 1'-0"

REVNO.	DATE	REMARKS
1	12/3/18	FULL RELEASE
2	1/2/19	UPDATED FOR STRUCTURAL
3	1/3/19	PEDISTAL SINK IN POWDER BATH
4		
5		

THESE PLANS AND THE DESIGNS CONTAINED HEREIN ARE THE SOLE PROPERTY OF LENNAR CORPORATION. © 2018 LENNAR CORPORATION. ALL RIGHTS RESERVED.
 LENNAR CORPORATION EXPRESSLY RESERVES ITS COPYRIGHT AND OTHER PROPERTY RIGHTS IN THESE DESIGNS AND DRAWINGS. UNAUTHORIZED DUPLICATION OR DISTRIBUTION OF THESE PLANS IS PROHIBITED.

LENNAR®	SET NO.	9152CO	DRAWN BY	SAM	COLLECTION	VENTURE
	MODEL	BELMONT C	DRAWING TITLE	FIRST FLOOR PLAN	OPTION DESCRIPTION	

SHEET NO.
A3.1C



NOTE:
WINDOW HEADERS:
2-2X6 W/ (1) 2X4 JACK
EACH END TYP., UNLESS
NOTED OTHERWISE

GENERAL NOTES:

1. ALL WINDOW HEADERS HEIGHTS TO BE 6'-10 1/8" HT. UNLESS NOTED OTHERWISE.
2. 2ND FLOOR WALL HT. TO BE 8'-1 1/8", EXCEPT WHERE NOTED OTHERWISE.
3. ALL INTERIOR ROUGH OPENINGS TO BE 6'-10 1/8" HT. UNLESS NOTED OTHERWISE.

REVNO.	DATE	REMARKS
1	12/3/18	FULL RELEASE
2	1/2/19	UPDATED FOR STRUCTURAL
3		
4		
5		

THESE PLANS AND THE DESIGNS CONTAINED HEREIN ARE THE SOLE PROPERTY OF LENNAR CORPORATION. © 2018 LENNAR CORPORATION. ALL RIGHTS RESERVED. LENNAR CORPORATION EXPRESSLY RESERVES ITS COPYRIGHT AND OTHER PROPERTY RIGHTS IN THESE DESIGNS AND DRAWINGS. UNAUTHORIZED DUPLICATION OR DISTRIBUTION OF THESE PLANS IS PROHIBITED.

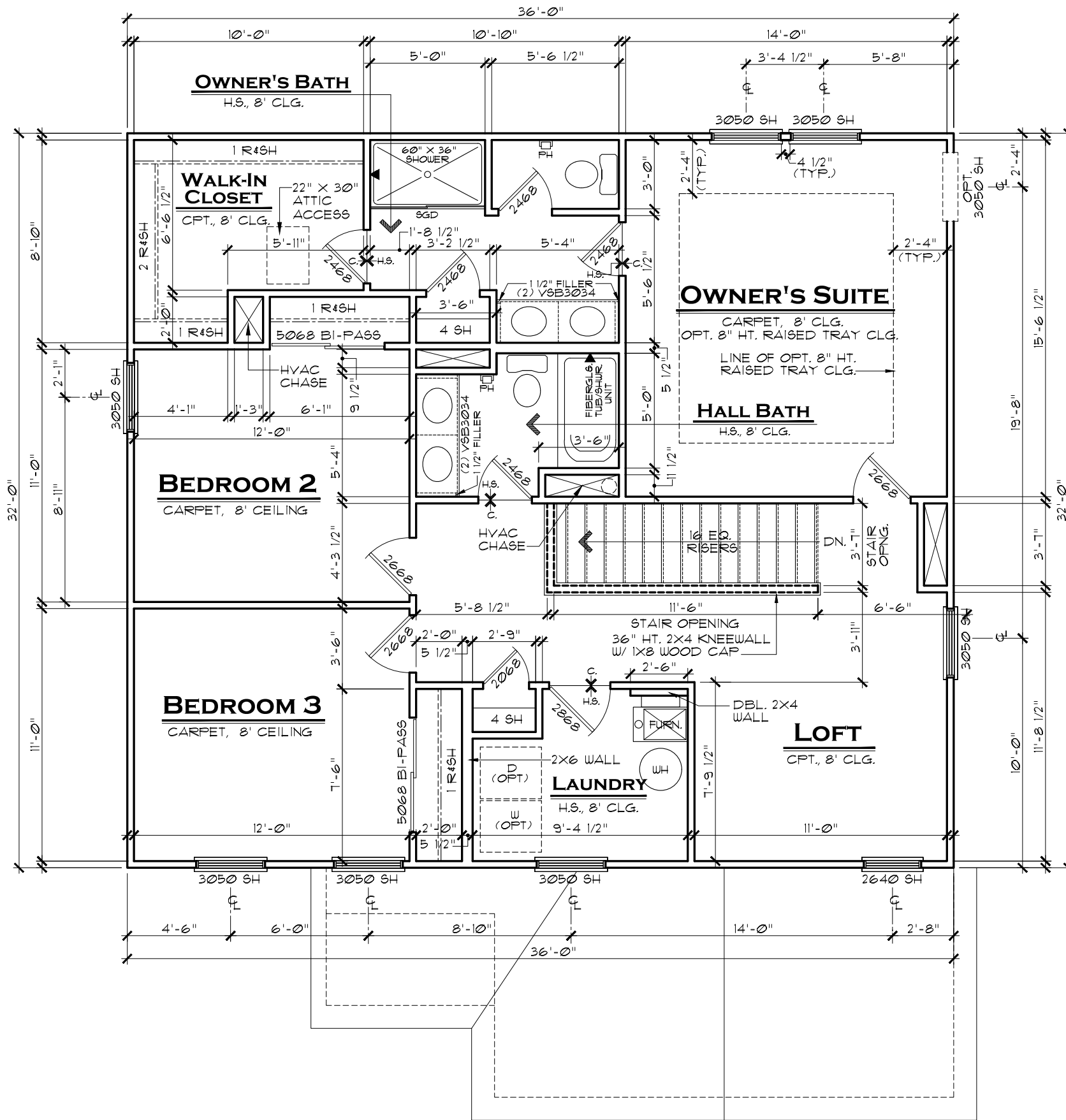
MODEL	SET NO.	DRAWN BY	COLLECTION	VENTURE
BELMONT A	9152A0	SAM		

DRAWING TITLE	OPTION DESCRIPTION
SECOND FLOOR PLAN	

SECOND FLOOR PLAN A

SCALE: 3/16" = 1'-0"

SHEET NO.
A3.2A



NOTE:
 WINDOW HEADERS:
 2-2X6 W/ (1) 2X4 JACK
 EACH END TYP., UNLESS
 NOTED OTHERWISE

GENERAL NOTES:

1. ALL WINDOW HEADERS HEIGHTS TO BE 6'-10 1/8" HT. UNLESS NOTED OTHERWISE.
2. 2ND FLOOR WALL HT. TO BE 8'-1 1/8", EXCEPT WHERE NOTED OTHERWISE.
3. ALL INTERIOR ROUGH OPENINGS TO BE 6'-10 1/8" HT. UNLESS NOTED OTHERWISE.

SECOND FLOOR PLAN B

SCALE: 3/16" = 1'-0"

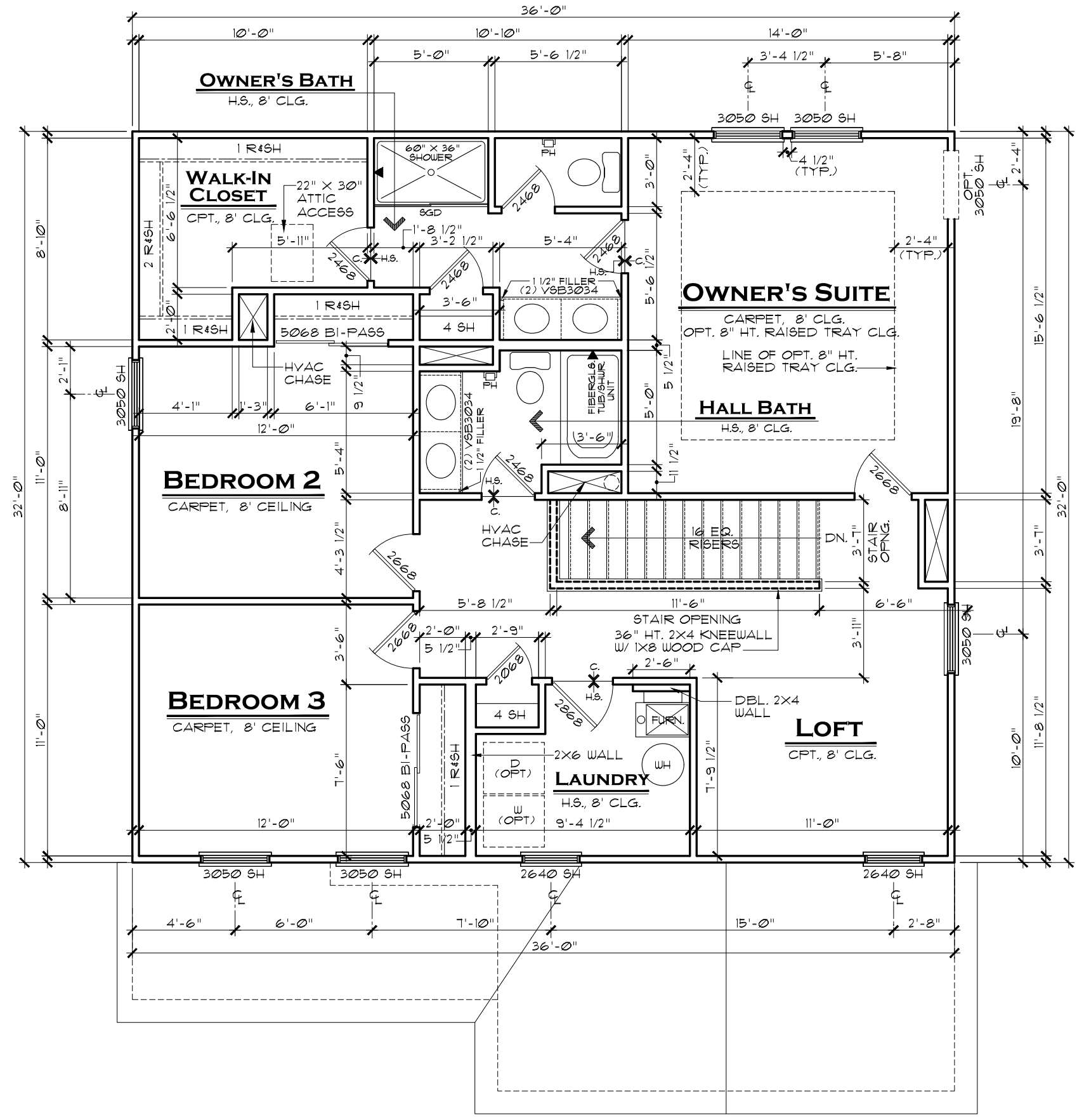


REVNO.	DATE	REMARKS
1	12/3/18	FULL RELEASE
2	1/2/19	UPDATED FOR STRUCTURAL
3		
4		
5		

THESE PLANS AND THE DESIGNS CONTAINED HEREIN ARE THE SOLE PROPERTY OF LENNAR CORPORATION. © 2018 LENNAR CORPORATION. ALL RIGHTS RESERVED. LENNAR CORPORATION EXPRESSLY RESERVES ITS COPYRIGHT AND OTHER PROPERTY RIGHTS IN THESE DESIGNS AND DRAWINGS. UNAUTHORIZED DUPLICATION OR DISTRIBUTION OF THESE PLANS IS PROHIBITED.

LENNAR	SET NO.	9152B0	DRAWN BY	SAM	COLLECTION	VENTURE
	MODEL	BELMONT B	DRAWING TITLE	SECOND FLOOR PLAN	OPTION DESCRIPTION	

SHEET NO.
A3.2B



NOTE:
 WINDOW HEADERS:
 2-2x6 W/ (1) 2x4 JACK
 EACH END TYP., UNLESS
 NOTED OTHERWISE

GENERAL NOTES:

1. ALL WINDOW HEADERS HEIGHTS TO BE 6'-10 1/8" HT. UNLESS NOTED OTHERWISE.
2. 2ND FLOOR WALL HT. TO BE 8'-1 1/8", EXCEPT WHERE NOTED OTHERWISE.
3. ALL INTERIOR ROUGH OPENINGS TO BE 6'-10 1/8" HT. UNLESS NOTED OTHERWISE.

REV. NO.	DATE	REMARKS
1	12/3/18	FULL RELEASE
2	1/2/19	UPDATED FOR STRUCTURAL
3		
4		
5		

THESE PLANS AND THE DESIGNS CONTAINED HEREIN ARE THE SOLE PROPERTY OF LENNAR CORPORATION. © 2018 LENNAR CORPORATION. ALL RIGHTS RESERVED. LENNAR CORPORATION EXPRESSLY RESERVES ITS COPYRIGHT AND OTHER PROPERTY RIGHTS IN THESE DESIGNS AND DRAWINGS. UNAUTHORIZED DUPLICATION OR DISTRIBUTION OF THESE PLANS IS PROHIBITED.

SET NO.	9152CO
DRAWN BY	SAM
COLLECTION	VENTURE

MODEL	BELMONT C
DRAWING TITLE	SECOND FLOOR PLAN
OPTION DESCRIPTION	

SECOND FLOOR PLAN C

SCALE: 3/16" = 1'-0"

SHEET NO.
A3.2C