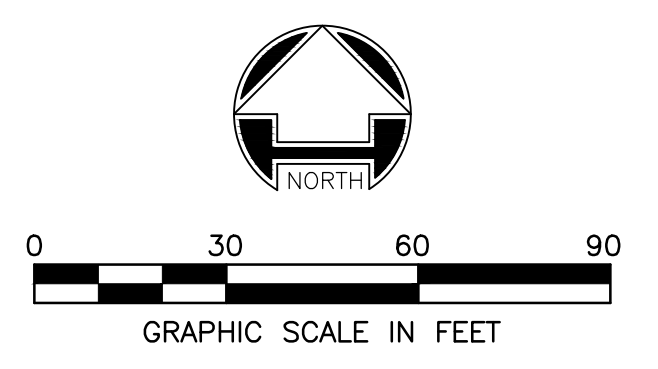
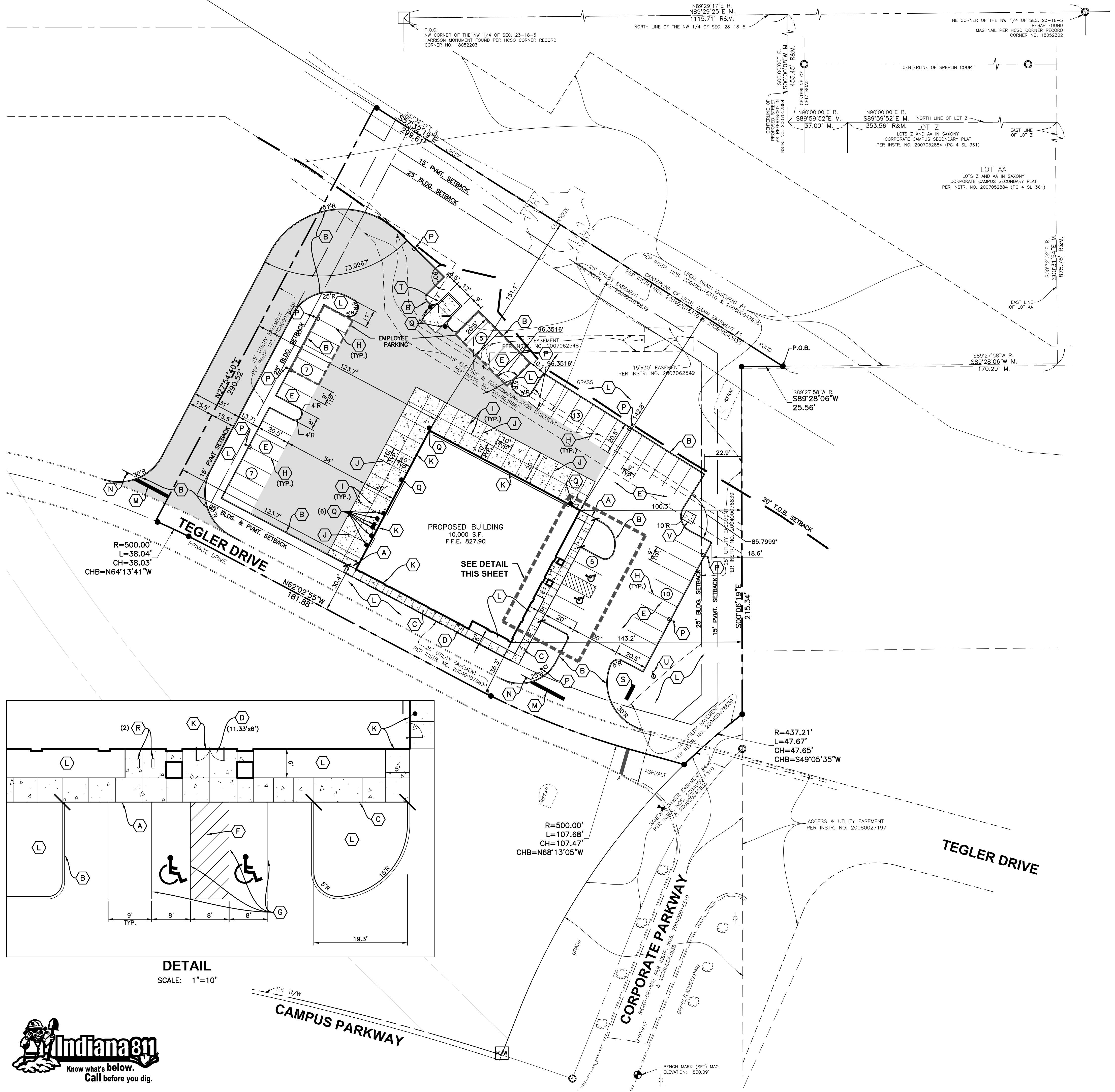
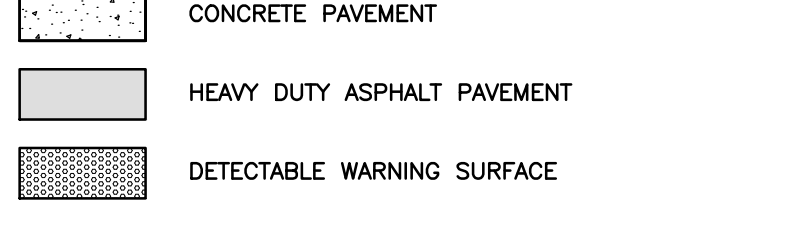


Layout Tab Name: C200_Images: KL_AR_PRODIMAGE_515.jpg; Xrefs: 795757BLK.dwg, 79575--k.dwg; 79575--p.dwg; 795757LT.dwg; 795757.dwg
Last Saved By: Smith, 2/25/2020 11:22:43 AM
\\vd56ac1\svin\DE\Clients\Enright_Architects\79575 - Belle Tire - Noblesville\4.0 Disciplines\Civil\Coord\Cad\795757.dwg Plotted By: Smith, Angela Plotted: February 25, 2020, 1:15:36 PM



LEGEND

SYMBOL	DESCRIPTION
A	INTEGRAL WALK & CURB
B	6" STRAIGHT CURB
C	CONCRETE WALK
D	CONCRETE STOOP (5'x5' UNLESS OTHERWISE)
E	REGULAR DUTY ASPHALT PAVEMENT
F	4" PAINTED BLUE PAVEMENT STRIPE AT 45° ANGLE, 2" O.C.
G	4" PAINTED BLUE PAVEMENT STRIPE
H	4" PAINTED WHITE PAVEMENT STRIPE
I	CONTROL JOINT
J	EXPANSION JOINT
K	EXPANSION JOINT AT BUILDING
L	LANDSCAPED AREA
M	24" STOP BAR
N	STOP SIGN
O	ADA SIGN
P	LIGHT POLE (SEE LIGHTING PLAN)
Q	GUARD POST
R	BICYCLE RACK
S	BELLE TIRE SIGN (SEE ARCH. PLANS)
T	DUMPSTER ENCLOSURE
U	60' FLAG POLE WITH 30'x20' FLAG
V	TRANSFORMER PAD
W	ADA PAVEMENT SYMBOL
X	SIGN
Y	CURB TRANSITION
Z	NUMBER OF PARKING SPACES



BID ALTERNATES

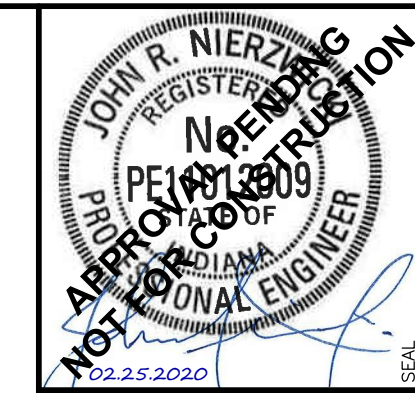
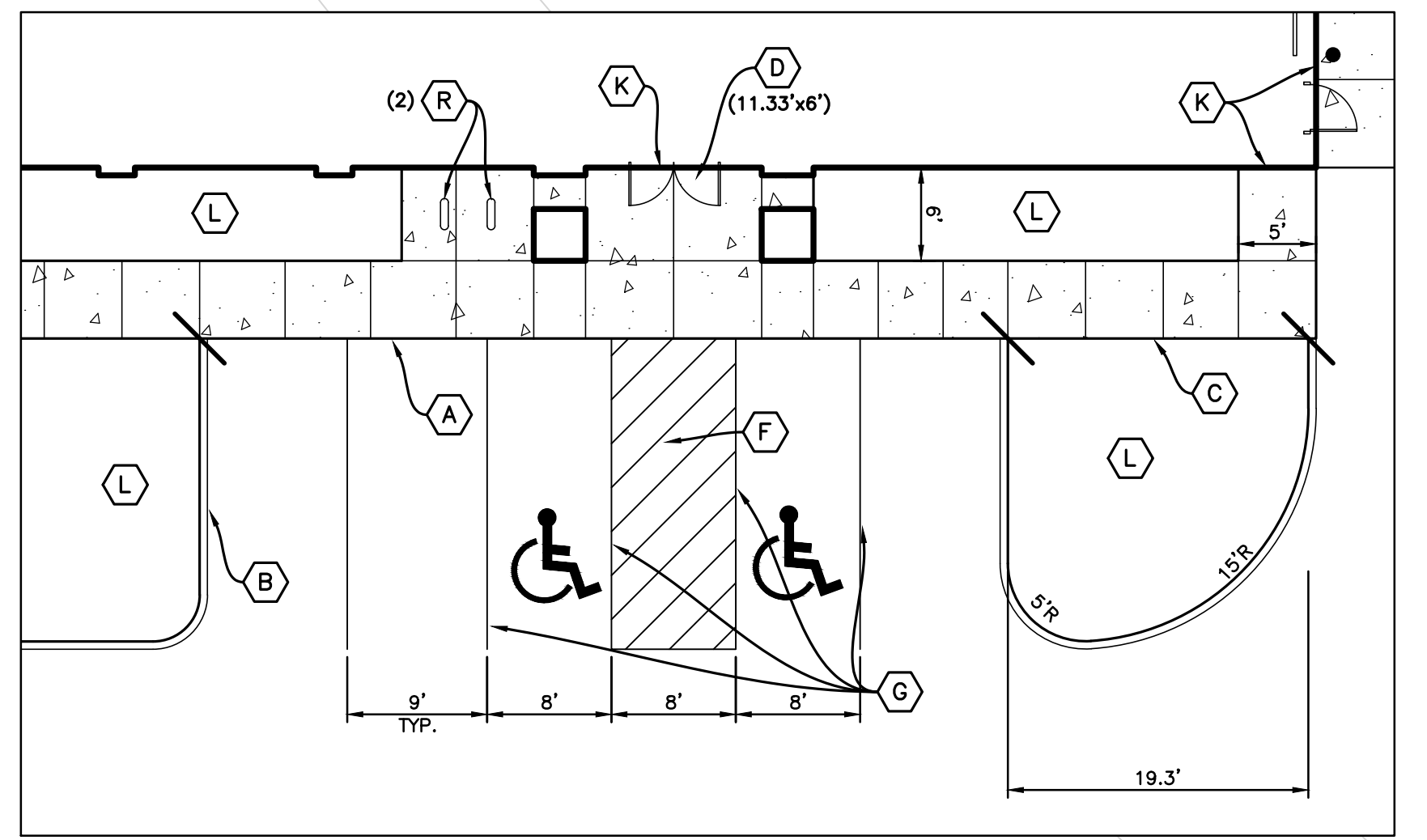
ALTERNATE BID ITEM 1: INSTALLATION OF CONCRETE PAVEMENT (PER DETAIL ON PLAN SHEET C600) SITE WIDE IN LIEU OF ASPHALT PAVEMENT.

SITE NOTES

- 1. ALL DIMENSIONS IN CURBED AREAS SHALL BE BACK TO BACK OF CURB.
--ALL DIMENSIONS IN AREAS WITHOUT CURB SHALL BE TO EDGE OF PAVEMENT.
--ALL DIMENSIONS AT INTEGRAL CURB & WALK SHALL BE TO FACE OF CURB.
--ALL DIMENSIONS FROM BUILDING SHALL BE FROM FACE OF BUILDING.
- 2. ALL RADII IN PAVED AREAS & ON CURBS SHALL BE 3' UNLESS NOTED OTHERWISE.
- 3. THE CONTRACTOR SHALL VERIFY ALL DIMENSIONS IN FIELD BEFORE STARTING CONSTRUCTION. THE CONTRACTOR SHALL BE RESPONSIBLE FOR ALL FIELD DIMENSIONS. IF ANY DISCREPANCIES ARE FOUND IN THESE PLANS FROM ACTUAL FIELD CONDITION, THE CONTRACTOR SHALL CONTACT A/E IMMEDIATELY.
- 4. PROVIDE SMOOTH TRANSITION FROM NEW AREAS TO EXISTING FEATURES AS NECESSARY.
- 5. ALL AREAS WHERE THE EXISTING PAVEMENT OR PAVEMENTS ARE DAMAGED DURING CONSTRUCTION FROM TRAFFIC BY THE GENERAL CONTRACTOR, SUBCONTRACTORS, OR SUPPLIERS SHALL BE RESURFACED OR RECONSTRUCTED AT LEAST TO THEIR ORIGINAL CONDITION AFTER CONSTRUCTION WORK IS COMPLETED.
- 6. ALL RADII INDICATED SHALL BE FORMED AS CIRCULAR ARCS.
- 7. ALL DIMENSIONS ARE PARALLEL AND PERPENDICULAR TO BASE LINES, PROPERTY LINES OR BUILDING LINES UNLESS OTHERWISE NOTED.
- 8. ADA RAMP AND SIGNAGE SHALL BE IN ACCORDANCE WITH FEDERAL, STATE, COUNTY, CITY AND LOCAL CODE WHICHEVER HAS JURISDICTION. SEE SITE PLAN FOR LOCATION AND SITE DETAILS FOR SPECIFICATIONS.
- 9. ALL STRIPES ARE TO BE 4" PAINTED, WHITE, UNLESS OTHERWISE NOTED.
- 10. THE CONTRACTOR SHALL BE RESPONSIBLE TO PROVIDE AT HIS EXPENSE ALL AUTOMOBILE AND PEDESTRIAN TRAFFIC CONTROL DEVICES REQUIRED BY FEDERAL, STATE, COUNTY, CITY OR LOCAL AGENCY. THE AMOUNT, LOCATION AND SIZE SHALL BE PER DIRECTION OF AGENCY.
- 11. IT IS THE RESPONSIBILITY OF THE CONTRACTOR TO REMOVE ALL MUD, DIRT, GRAVEL, AND ANY OTHER MATERIALS TRACKED ONTO ANY PUBLIC OR PRIVATE STREETS OR SIDEWALKS. THE CONTRACTOR MUST CLEAN THESE DAILY IF NECESSARY. THE CONTRACTOR MUST USE WATER OR OTHER METHODS TO KEEP AIRBORNE DUST TO A REQUIRED MINIMUM.

PARKING DATA	
PER ZONING ORDINANCE	
PARKING SPACES REQUIRED	
4 PARKING SPACES PER 1,000 SF OF BUILDING GROSS FLOOR AREA	40
BICYCLE PARKING	2
PARKING SPACES PROVIDED	
EMPLOYEE PARKING SPACES	10
GUEST PARKING SPACES	35
STANDARD PARKING SPACES	45
ADA PARKING SPACES	2
TOTAL PARKING SPACES =	47

SITE DATA	
ACREAGE	2.098 AC
GROSS BUILDING AREA (GFA)	10,000 SF
IMPERVIOUS AREA	1.32 AC (57,490 SF)
COVERAGE PERCENTAGE	63%



REVISION

PROJECT No:	79575
DATE:	02/25/20
DES. DR.	MINH
CHKD.	ARS

333 North Alabama Street
Suite 200
Indianapolis, IN 46204
317.299.7500
317.291.5805

WOOLPERT
ARCHITECTURAL ENGINEERING & CONSULTANTS

BELLE TIRE NOBLESVILLE

XXXXX TEGLER DRIVE
NOBLESVILLE, INDIANA

SITE PLAN

SHEET NO.

C200