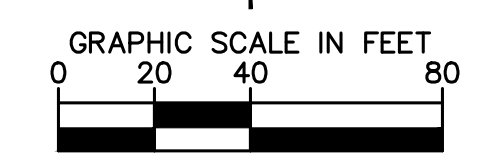
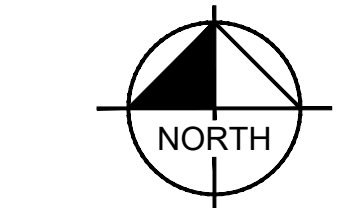


Drawing name: K:\IND_LDEV\170072000_Jackson Dev_146th and Promise_Roads\GIS\1\3\0 SITE PLAN.dwg C3.0 Feb 28, 2020 12:25pm by: Mike Timko
 This document, together with the concepts and designs presented herein, is intended only for the specific purpose and client for which it was prepared. Reuse of and improper reliance on this document without written authorization and adaptation by Kimley-Horn and Associates, Inc. shall be without liability to Kimley-Horn and Associates, Inc.



GENERAL NOTES

1. ALL DIMENSIONS REFER TO THE FACE OF CURB UNLESS OTHERWISE NOTED.
2. BUILDING DIMENSIONS ARE TO THE OUTSIDE FACE OF BUILDING UNLESS OTHERWISE NOTED.
3. REFER TO ARCHITECTURAL AND STRUCTURAL PLANS TO VERIFY ALL BUILDING DIMENSIONS.
4. RADII ADJACENT TO PARKING STALL AND NOT DIMENSIONED ON THIS PLAN SHALL BE 3'-FEET, TYPICAL.
5. REFER TO ARCHITECTURAL PLANS FOR MONUMENT SIGN DETAILS. SEE MEP PLANS FOR SITE ELECTRICAL DRAWINGS.
6. ALL PROPOSED ON-SITE STRIPING SHALL BE PAINTED UNLESS OTHERWISE NOTED.

KEY NOTES

- 1 6" CONCRETE STANDARD CURB (SEE DETAILS)
- 2 CONCRETE SIDEWALK, TYP. (SEE DETAILS)
- 3 ACCESSIBLE PAVEMENT MARKINGS, TYP. (SEE DETAILS)
- 4 ACCESSIBLE PARKING SIGN, TYP. (MUTCD R7-8, SEE DETAILS)
- 5 4" WIDE PAINTED WHITE SOLID LINE, TYP.
- 6 4" WIDE PAINTED YELLOW SOLID LINE, TYP.
- 7 CONNECT TO EXISTING PAVEMENT, SIDEWALK, CURB, TYP.
- 8 24" WIDE STOP BAR, TYP.
- 9 STOP SIGN, TYP. (MUTCD R1-1, SEE DETAILS)
- 10 MONUMENT SIGN (SEE ARCHITECTURAL DETAILS)
- 11 DEPRESSED CURB
- 12 ACCESSIBLE RAMP (SEE INDOT DETAILS)
- 13 TRANSFORMER PAD (SEE ARCHITECTURAL PLANS FOR DETAILS)
- 14 5' X 5' CONCRETE SIDEWALK AT EXIT DOOR
- 15 STAIRS (SEE ARCHITECTURAL DETAILS)

PAVING AND CURB LEGEND

- STANDARD DUTY ASPHALT PAVEMENT
SEE CONSTRUCTION DETAILS FOR PAVEMENT SECTION
- HEAVY DUTY ASPHALT PAVEMENT
SEE CONSTRUCTION DETAILS FOR PAVEMENT SECTION
- CONCRETE SIDEWALK
SEE CONSTRUCTION DETAILS FOR PAVEMENT SECTION
*SEE ARCHITECTURAL PLANS FOR SCOURING PATTERN
- HEAVY DUTY CONCRETE PAVEMENT
SEE CONSTRUCTION DETAILS FOR PAVEMENT SECTION
*SEE ARCHITECTURAL PLANS FOR SCOURING PATTERN
- STANDARD CONCRETE CURB
- CONCRETE DEPRESSED CURB

BENCHMARKS

SITE BENCHMARKS:
(LOCATIONS SHOWN ON SURVEY)

TBM #1 SQUARE CUT ±300' N OF C. OF 146TH STREET & PROMISE ROAD INTERSECTION ON CONCRETE BASE OF SCHOOL SIGNAL SIGN EAST SIDE OF PROMISE ROAD.
ELEVATION=828.94

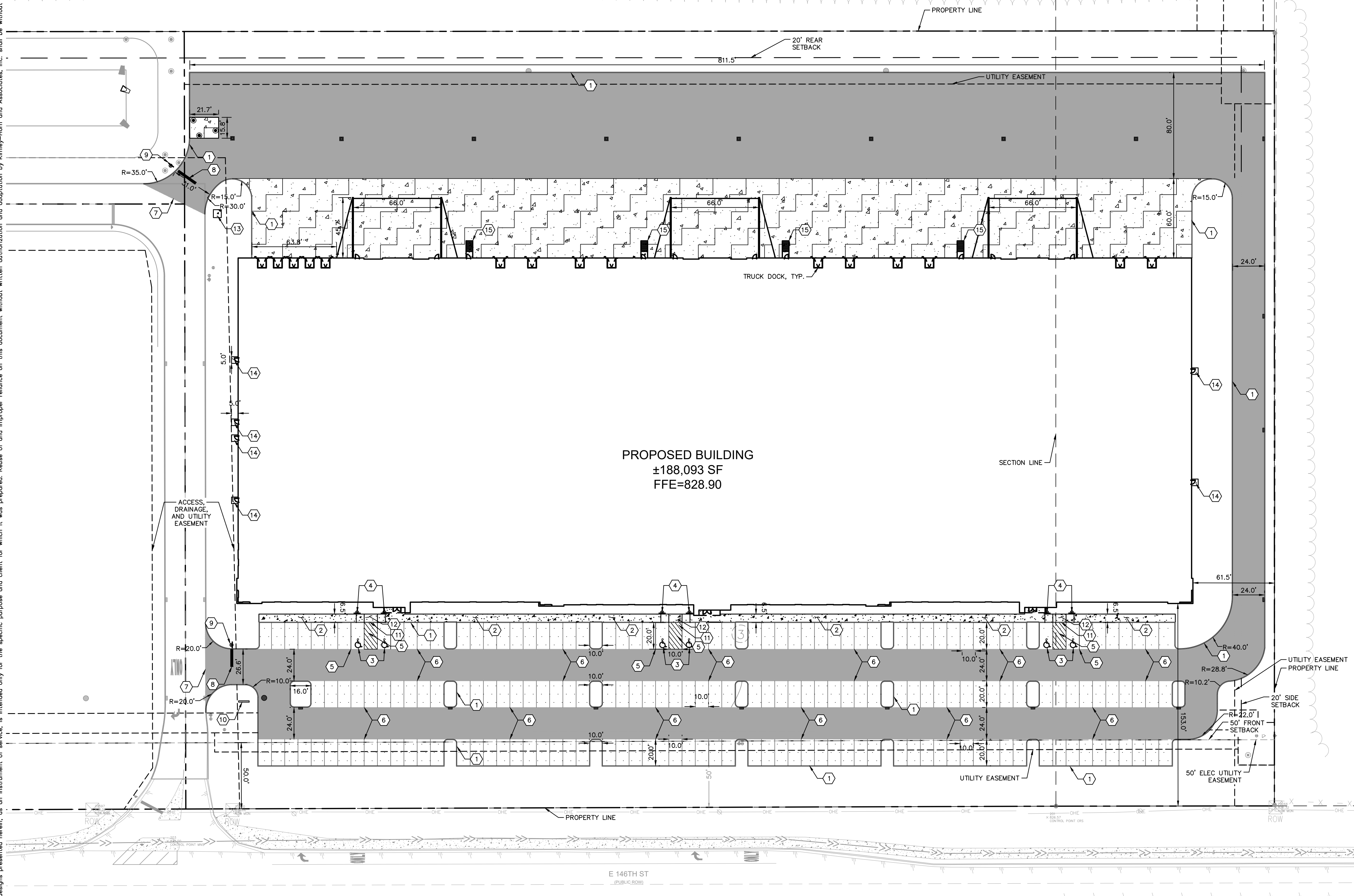
TBM #2 SQUARE CUT IN AREA LIGHT BASE AT THE ANGLE BREAK OF DECEL LANE ±600 EAST OF C. OF 146TH STREET & PROMISE ROAD INTERSECTION, ±15' NORTH OF CURB INLET ON NORTH CURB LINE OF 146TH STREET.
ELEVATION=830.82

TBM #3 SOUTHEAST CORNER OF CONCRETE BASE OF ELECTRICAL PANEL, ±400 EAST OF C.P. 200, NORTH SIDE OF 146TH STREET, ±10.5' SOUTHEAST OF AREA LIGHT, ±12.5' SOUTHWEST OF ROW MARKER.
ELEVATION=826.59

TBM #4 MAG NAIL FOUND IN AREA LIGHT BASE ±200' WEST OF EAST PROPERTY LINE, ±30' SOUTHWEST OF C.P. 201, ±50' NORTH OF C. OF ISLAND ON 146TH STREET.
ELEVATION=822.16

PARKING SUMMARY

PARKING SPACES REQUIRED (PER PD)	= 94
PARKING SPACES PROVIDED	= 179
ACCESSIBLE PARKING SPACES PROVIDED	= 6
TOTAL PARKING SPACES	= 185



PROPOSED BUILDING
 ±188,093 SF
 FFE=828.90

 © 2020 KIMLEY-HORN AND ASSOCIATES, INC. 250 EAST 96TH STREET, SUITE 550, INDIANAPOLIS, IN 46240 WWW.KIMLEY-HORN.COM	SCALE: AS NOTED DESIGNED BY: MUT DRAWN BY: CSM CHECKED BY: WAB 03/02/2020
 JACKSON DEVELOPMENT	SITE PLAN
OFS 1 146TH STREET & PROMISE ROAD NOBLESVILLE, IN	ORIGINAL ISSUE: 03/02/2020 KHA PROJECT NO. 170072001 SHEET NUMBER C3.0
REVISIONS NO. DATE BY	DATE BY