



THE "GATEWAY"  
INTEGRATED  
SIGNAGE PACKAGE

09.21.22



# SOUTH PARCEL

PHASE 1



# NORTH PARCEL

PHASE 2



## THE GATEWAY AT HYDE PARK

NOBLESVILLE, IN | SEPTEMBER 2022





# INTEGRATED DEVELOPMENT SIGNAGE PLANS SOUTH PARCEL - Sheet 1



1 EXTERIOR ELEVATION - NORTH  
1/16" = 1'-0"



2 EXTERIOR ELEVATION - SOUTH  
1/16" = 1'-0"

## "GATEWAY" AT HYDE PARK

### INTEGRATED DEVELOPMENT SIGN LEGEND

	<b>PROJECTION SIGN</b> A1 Tenant Blade Area 72" w x 246" h x 30" d
	<b>AWNING SIGN - 1ST FLOOR TENANT</b> B1 Tenant Awning Area 180" w x 94" h B2 Tenant Awning Area 126" w x 52" h
	<b>WINDOW TENANT GRAPHIC: Not more than 33% OF PANE</b>
	<b>BLADE SIGN - TENANT PROJECTION SIGN</b> C1 Projection Area 50" w x 50" h x 18" d
	<b>PROJECTION and WALL SIGNS - PARKING GARAGE</b> P1 Projection Sign Area 72" w x 90" h x 30" d P2 Garage Wall Sign Area 20" w x 3.5" h
	<b>DESIGNATION AND GROUND SIGNS</b> D1 Designation Sign Area 12" w x 12" h D2 Ground Sign Area 21'-6" w x 12" h
	<b>WALL SIGN - PROPERTY NAME</b> E1 "Gateway" Marque Sign Area 19' w x 3.5' h E2 "Gateway" Leasing Sign Area 52' w x 114' h

# INTEGRATED DEVELOPMENT SIGNAGE PLANS SOUTH PARCEL - Sheet 2



1 EXTERIOR ELEVATION - EAST  
1/16" = 1'-0"



2 EXTERIOR ELEVATION - WEST  
1/16" = 1'-0"

## "GATEWAY" AT HYDE PARK

### INTEGRATED DEVELOPMENT SIGN LEGEND

	<b>PROJECTION SIGN</b> A1 Tenant Blade Area 72" w x 246" h x 30" d
	<b>AWNING SIGN - 1ST FLOOR TENANT</b> B1 Tenant Awning Area 180" w x 94" h B2 Tenant Awning Area 126" w x 52" h
	<b>WINDOW TENANT GRAPHIC: Not more than 33% OF PANE</b>
	<b>BLADE SIGN - TENANT PROJECTION SIGN</b> C1 Projection Area 50" w x 50" h x 18" d
	<b>PROJECTION and WALL SIGNS - PARKING GARAGE</b> P1 Projection Sign Area 72" w x 90" h x 30" d P2 Garage Wall Sign Area 20" w x 3.5" h
	<b>DESIGNATION AND GROUND SIGNS</b> D1 Designation Sign Area 12" w x 12" h D2 Ground Sign Area 21'-6" w x 12" h
	<b>WALL SIGN - PROPERTY NAME</b> E1 "Gateway" Marque Sign Area 19" w x 3.5" h E2 "Gateway" Leasing Sign Area 52" w x 114" h



# INTEGRATED DEVELOPMENT SIGNAGE PLANS NORTH PARCEL - Sheet 1



## “GATEWAY” AT HYDE PARK

### INTEGRATED DEVELOPMENT SIGN LEGEND

	<b>PROJECTION SIGN</b> A1 Tenant Blade Area 72" w x 246" h x 30" d
	<b>AWNING SIGN - 1ST FLOOR TENANT</b> B1 Tenant Awning Area 180" w x 94" h B2 Tenant Awning Area 126" w x 52" h
	<b>WINDOW TENANT GRAPHIC: Not more than 33% OF PANE</b>
	<b>BLADE SIGN - TENANT PROJECTION SIGN</b> C1 Projection Area 50" w x 50" h x 18" d
	<b>PROJECTION and WALL SIGNS - PARKING GARAGE</b> P1 Projection Sign Area 72" w x 90" h x 30" d P2 Garage Wall Sign Area 20" w x 3.5" h
	<b>DESIGNATION AND GROUND SIGNS</b> D1 Designation Sign Area 12" w x 12" h D2 Ground Sign Area 21'-6" w x 12" h
	<b>WALL SIGN - PROPERTY NAME</b> E1 "Gateway" Marque Sign Area 19" w x 3.5" h E2 "Gateway" Leasing Sign Area 52" w x 114" h

INTEGRATED DEVELOPMENT  
SIGNAGE PLANS  
NORTH PARCEL - Sheet 2



“GATEWAY”  
AT HYDE PARK

INTEGRATED DEVELOPMENT  
SIGN LEGEND

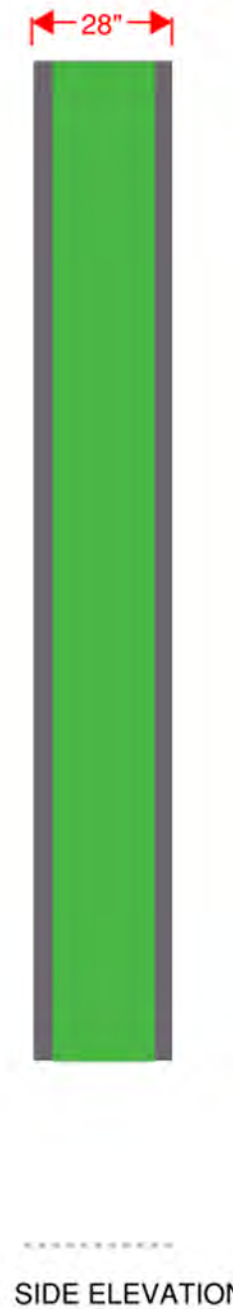
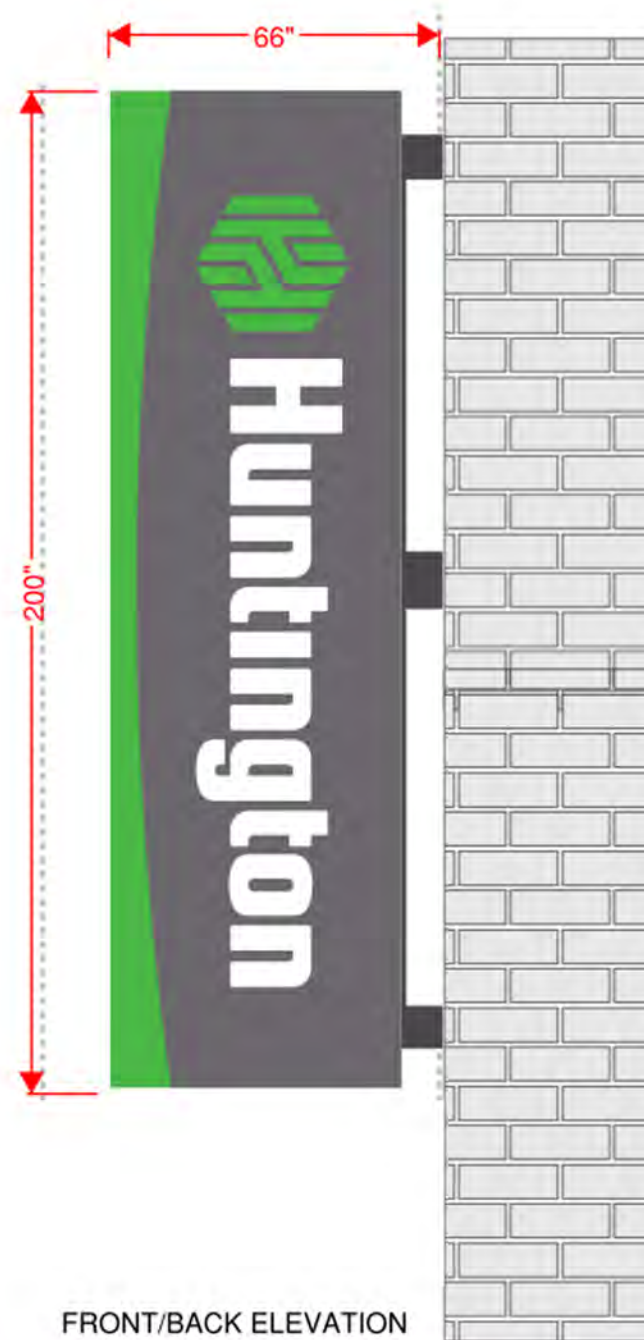
	<b>PROJECTION SIGN</b> A1 Tenant Blade Area 72" w x 246" h x 30" d
	<b>AWNING SIGN - 1ST FLOOR TENANT</b> B1 Tenant Awning Area 180" w x 94" h B2 Tenant Awning Area 126" w x 52" h
	<b>WINDOW TENANT GRAPHIC: Not more than 33% OF PANE</b>
	<b>BLADE SIGN - TENANT PROJECTION SIGN</b> C1 Projection Area 50" w x 50" h x 18" d
	<b>PROJECTION and WALL SIGNS - PARKING GARAGE</b> P1 Projection Sign Area 72" w x 90" h x 30" d P2 Garage Wall Sign Area 20" w x 3.5" h
	<b>DESIGNATION AND GROUND SIGNS</b> D1 Designation Sign Area 12" w x 12" h D2 Ground Sign Area 21'-6" w x 12" h
	<b>WALL SIGN - PROPERTY NAME</b> E1 "Gateway" Marque Sign Area 19' w x 3.5' h E2 "Gateway" Leasing Sign Area 52" w x 114" h



# A1

## PROJECTION SIGN - TENANT BLADE SIGN - SAMPLE

## INTEGRATED DEVELOPMENT Signage Examples



### FABRICATE AND INSTALL INTERNALLY ILLUMINATED D/F BLADE SIGN

**FACES** - 3/16" WHITE POLYCARBONATE

**VINYL** - MATCH SPECS

**RETAINERS** - 1" TO MATCH SPECS

**ARMS** - 2" SQ ALUMINUM TUBING PAINTED TO MATCH SPECS

**BRACKET** - 1/4" PLATE ALUMINUM PAINTED TO MATCH SPECS

**LEDS** - WHITE

**INSTALLATION** - PROJECTED OFF BUILDING WITH ARMS AND BRACKETS

#### COLOR SPECIFICATIONS:

<b>A</b> MP20147 DURONODIC BRONZE MET.	<b>F</b>
<b>B</b> DIG. PRINT	<b>G</b>
<b>C</b> ORACAL 651-070 BLACK	<b>H</b>
<b>D</b>	<b>I</b>
<b>E</b>	<b>J</b>

*NOTE: THERE WILL BE COLOR VARIATIONS FROM THIS PRINTED DRAWING TO THE FINAL PRODUCT. COLORS SPECIFIED WILL ALWAYS BE MATCHED AS CLOSELY AS POSSIBLE. RENDERING IS BASED ON ESTIMATED DIMENSIONS. A FINAL SURVEY MAY ALTER ILLUSTRATED REPRESENTATION AND PLACEMENT.*

*IF ILLUMINATED: WILL BE WIRED TO 120 VOLT UNLESS OTHERWISE SPECIFIED. THIS SIGN IS INTENDED TO BE INSTALLED IN ACCORDANCE WITH THE REQUIREMENTS OF ARTICLE 600 OF THE NATIONAL ELECTRICAL CODE AND/OR OTHER APPLICABLE LOCAL CODES. THIS INCLUDES PROPER GROUNDING AND BONDING OF THE SIGN.*

**SCI REP:**  
JV

**DATE:**  
04/29/2020

**DESIGNER:**  
NK

**REVISION DATE:**

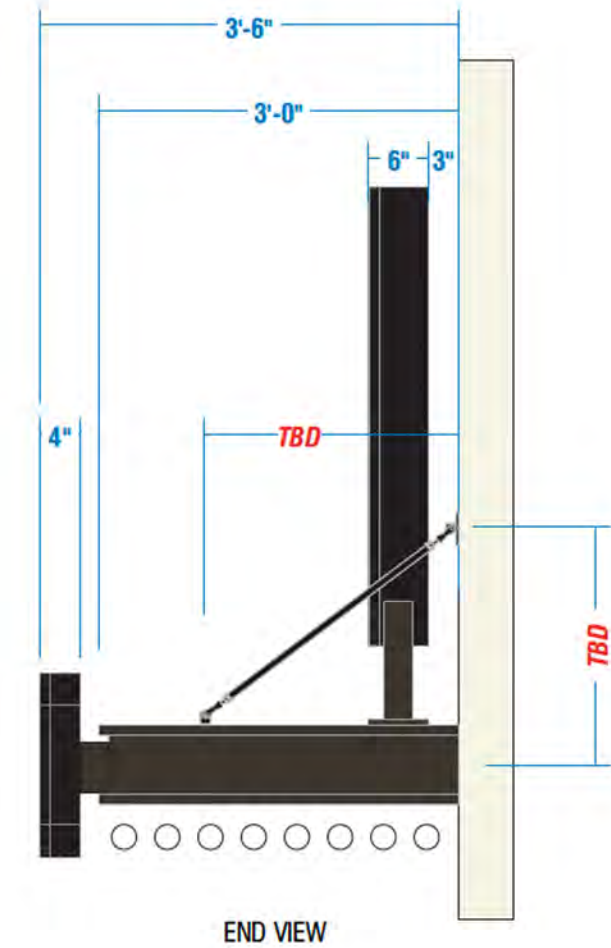
**PERMIT INFORMATION:**  
N/A

**FINAL DATE & BY:** **SHEET #:**

# B1

## AWNING SIGN - 1ST FLOOR TENANT - SAMPLE

## INTEGRATED DEVELOPMENT Signage Examples



END VIEW

18" INT. ILLUM. CHANNEL LETTERS W/ WIREWAY  
ONE (1) SET REQ'D.

SCALE: 3/4" = 1'-0"  
15.03 SQ. FT.

46" INT. ILLUM. MONOGRAM  
ONE (1) SET REQ'D.

SCALE: 3/4" = 1'-0"  
11.54 SQ. FT.

SCOPE OF WORK: MANUFACTURE & INSTALL ONE (1) TOP-MOUNTED INT. ILLUM. MONOGRAM ONTO COMPONENT SIGN A.3

**SPECIFICATIONS:**

**CABINET:** 6" D. FABRICATED ALUMINUM CHANNEL, PAINTED SATIN BLACK & INTERIOR PAINTED SATIN WHITE.

**FACES:** CLEAR ACRYLIC W/ 1ST SURFACE DIGITAL PRINT VINYL, 2ND SURFACE #70 DIFFUSER.

& 1" BLACK TRIM CAP

**ILLUMINATION:** PROVIDED BY 4000K WHITE LEDs & REMOTE POWER SUPPLIES HOUSED IN TRANSFORMER BOX, PAINTED BLACK, BEHIND WALL.

**SUPPORTS:** 3" SQ. STEEL TUBE W/ 1/2" STEEL MOUNTING PLATE, PAINTED SATIN BLACK. *NOTE: TRANS. BOX WILL BE VISIBLE.*

**MOUNTING:** BOLTED TO TOP OF CANOPY A.3 W/ NON-CORROSIVE HARDWARE PER ENGINEERING.

**COLOR SPECIFICATIONS:**

- |                                        |          |
|----------------------------------------|----------|
| <b>A</b> MP20147 DURONODIC BRONZE MET. | <b>F</b> |
| <b>B</b> DIG. PRINT                    | <b>G</b> |
| <b>C</b> ORACAL 651-070 BLACK          | <b>H</b> |
| <b>D</b>                               | <b>I</b> |
| <b>E</b>                               | <b>J</b> |

*NOTE: THERE WILL BE COLOR VARIATIONS FROM THIS PRINTED DRAWING TO THE FINAL PRODUCT. COLORS SPECIFIED WILL ALWAYS BE MATCHED AS CLOSELY AS POSSIBLE. RENDERING IS BASED ON ESTIMATED DIMENSIONS. A FINAL SURVEY MAY ALTER ILLUSTRATED REPRESENTATION AND PLACEMENT.*

*IF ILLUMINATED: WILL BE WIRED TO 120 VOLT UNLESS OTHERWISE SPECIFIED. THIS SIGN IS INTENDED TO BE INSTALLED IN ACCORDANCE WITH THE REQUIREMENTS OF ARTICLE 600 OF THE NATIONAL ELECTRICAL CODE AND/OR OTHER APPLICABLE LOCAL CODES. THIS INCLUDES PROPER GROUNDING AND BONDING OF THE SIGN.*

SCI REP:  
JV

DATE:

DESIGNER:  
NK

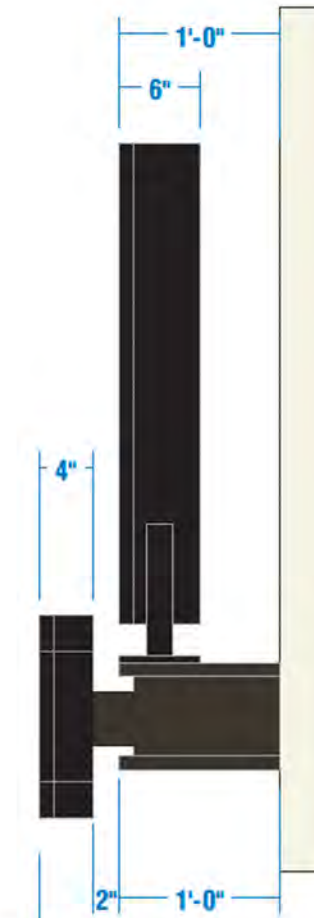
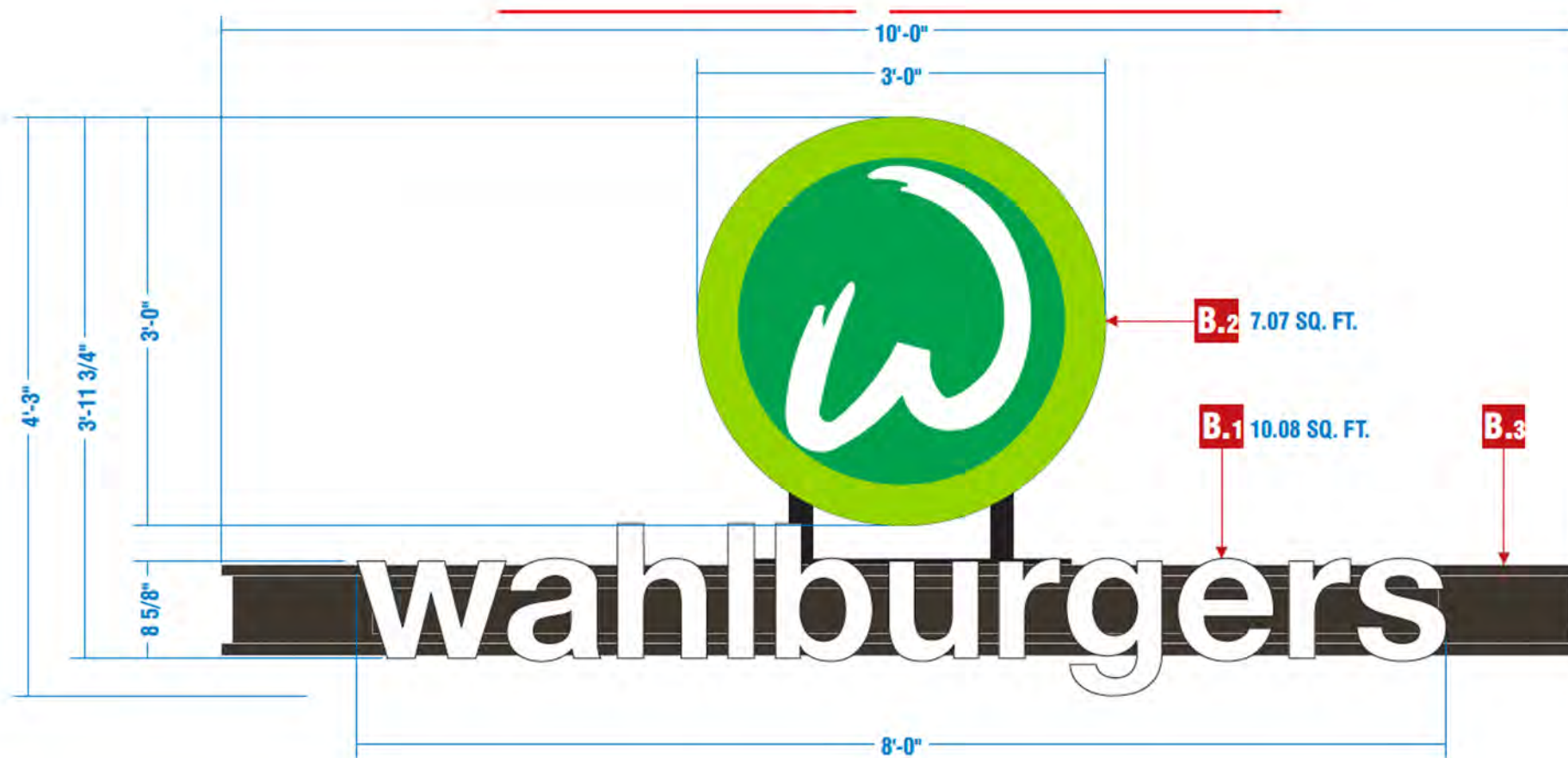
REVISION DATE:

PERMIT INFORMATION:  
N/A



# B2

AWNING SIGN - 1ST FLOOR TENANT - SAMPLE



24" INT. ILLUM. CHANNEL LETTERS W/ WIREWAY  
ONE (1) SET REQ'D.

SCALE: 1" = 1'-0"  
10.08 SQ. FT.

36" INT. ILLUM. MONOGRAM  
ONE (1) SET REQ'D.

SCALE: 1" = 1'-0"  
7.07 SQ. FT.

SCOPE OF WORK: MANUFACTURE & INSTALL ONE (1) SET OF WIREWAY MOUNTED INTERNALLY ILLUMINATED CHANNEL LETTERS ONTO COMPONENT SIGN B.3

SCOPE OF WORK: MANUFACTURE & INSTALL ONE (1) TOP-MOUNTED INT. ILLUM. MONOGRAM ONTO COMPONENT SIGN B.3

**SPECIFICATIONS:**  
**LETTERS:** 4" D. FABRICATED ALUMINUM CHANNEL, PAINTED SATIN BLACK & INTERIOR PAINTED SATIN WHITE.  
**FACES:** 7328 WHITE ACRYLIC W/ 1" BLACK TRIM CAP.  
**ILLUMINATION:** PROVIDED BY 4000K WHITE LEDs & REMOTE POWER SUPPLIES HOUSED IN TRANSFORMER BOX. PAINTED BLACK ON BACKSIDE OF WALL. *NOTE: TRANSFORMER BOX WILL BE VISIBLE!*  
**WIREWAY:** 5" X 3" FABRICATED ALUMINUM, PAINTED DARK BRONZE, SATIN FINISH.

**SPECIFICATIONS:**  
**CABINET:** 6" D. FABRICATED ALUMINUM CHANNEL, PAINTED SATIN BLACK & INTERIOR PAINTED SATIN WHITE.  
**FACES:** CLEAR ACRYLIC W/ 1ST SURFACE DIGITAL PRINT VINYL, 2ND SURFACE #70 DIFFUSER & 1" BLACK TRIM CAP.  
**ILLUMINATION:** PROVIDED BY 4000K WHITE LEDs & REMOTE POWER SUPPLIES HOUSED IN TRANSFORMER BOX, PAINTED BLACK ON BACKSIDE OF WALL. *NOTE: TRANSFORMER BOX WILL BE VISIBLE.*  
**SUPPORTS:** 2" SQ. STEEL TUBE W/ 1/2" STEEL MOUNTING PLATE, PAINTED SATIN BLACK  
**MOUNTING:** BOLTED TO TOP OF EYEBROW CANOPY B.3 W/ NON-CORROSIVE HARDWARE PER ENGINEERING.

COLOR SPECIFICATIONS:	
A MP20147 DURONODIC BRONZE MET.	F
B DIG. PRINT	G
C ORACAL 651-070 BLACK	H
D	I
E	J

*NOTE: THERE WILL BE COLOR VARIATIONS FROM THIS PRINTED DRAWING TO THE FINAL PRODUCT. COLORS SPECIFIED WILL ALWAYS BE MATCHED AS CLOSELY AS POSSIBLE. RENDERING IS BASED ON ESTIMATED DIMENSIONS. A FINAL SURVEY MAY ALTER ILLUSTRATED REPRESENTATION AND PLACEMENT.*

*IF ILLUMINATED: WILL BE WIRED TO 120 VOLT UNLESS OTHERWISE SPECIFIED. THIS SIGN IS INTENDED TO BE INSTALLED IN ACCORDANCE WITH THE REQUIREMENTS OF ARTICLE 600 OF THE NATIONAL ELECTRICAL CODE AND/OR OTHER APPLICABLE LOCAL CODES. THIS INCLUDES PROPER GROUNDING AND BONDING OF THE SIGN.*

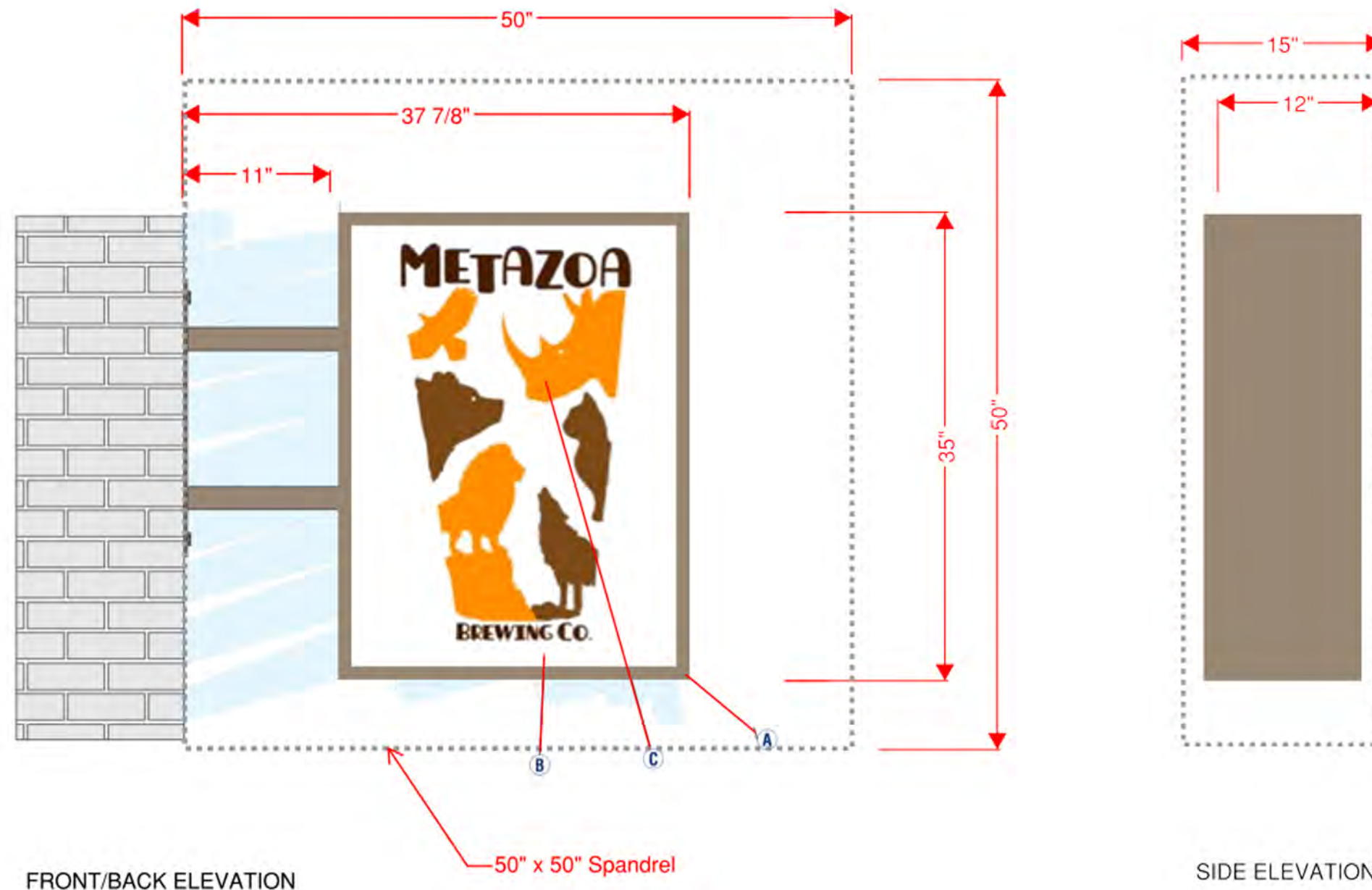
SCI REP: JV	DESIGNER: NK	PERMIT INFORMATION: N/A
DATE:	REVISION DATE:	



# C1

TENANT BLADE SIGN - SAMPLE

## INTEGRATED DEVELOPMENT Signage Examples



FRONT/BACK ELEVATION

SIDE ELEVATION

**FABRICATE AND INSTALL INTERNALLY ILLUMINATED D/F BLADE SIGN**

**FACES** - 3/16" WHITE POLYCARBONATE

**VINYL** - MATCH SPECS

**RETAINERS** - 1" TO MATCH SPECS

**ARMS** - 2" SQ ALUMINUM TUBING PAINTED TO MATCH SPECS

**BRACKET** - 1/4" PLATE ALUMINUM PAINTED TO MATCH SPECS

**LEDS** - WHITE

**INSTALLATION** - PROJECTED OFF BUILDING WITH ARMS AND BRACKETS

**COLOR SPECIFICATIONS:**

- A** MP20147 DURONODIC BRONZE MET.      **F**
- B** DIG. PRINT      **G**
- C** ORACAL 651-070 BLACK      **H**
- D**      **I**
- E**      **J**

*NOTE: THERE WILL BE COLOR VARIATIONS FROM THIS PRINTED DRAWING TO THE FINAL PRODUCT. COLORS SPECIFIED WILL ALWAYS BE MATCHED AS CLOSELY AS POSSIBLE. RENDERING IS BASED ON ESTIMATED DIMENSIONS. A FINAL SURVEY MAY ALTER ILLUSTRATED REPRESENTATION AND PLACEMENT.*

*IF ILLUMINATED: WILL BE WIRED TO 120 VOLT UNLESS OTHERWISE SPECIFIED. THIS SIGN IS INTENDED TO BE INSTALLED IN ACCORDANCE WITH THE REQUIREMENTS OF ARTICLE 600 OF THE NATIONAL ELECTRICAL CODE AND/OR OTHER APPLICABLE LOCAL CODES. THIS INCLUDES PROPER GROUNDING AND BONDING OF THE SIGN.*

**SCI REP:**  
JV

**DATE:**  
04/29/2020

**DESIGNER:**  
NK

**REVISION DATE:**

**PERMIT INFORMATION:**  
N/A

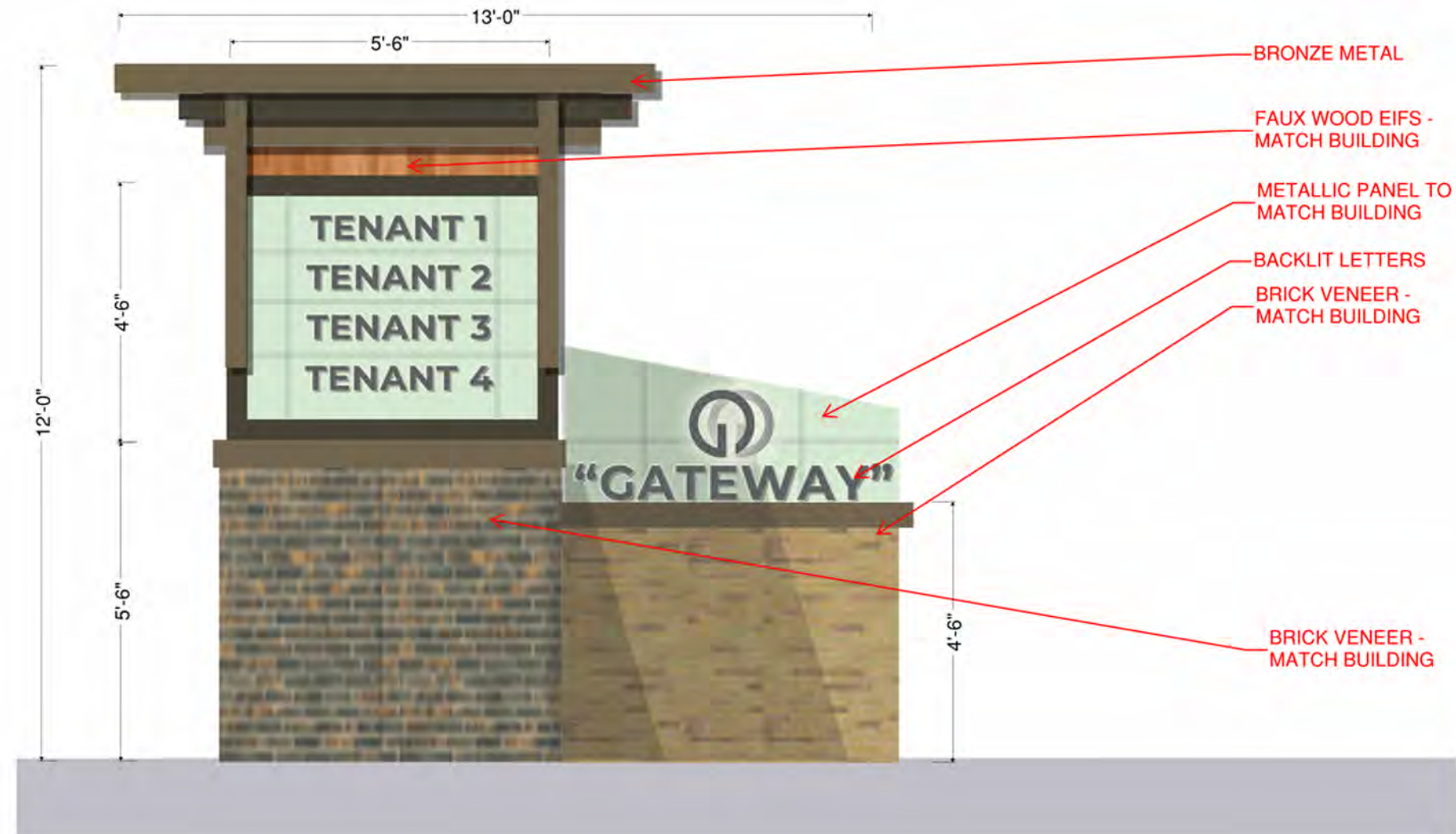
**FINAL DATE & BY:**      **SHEET #:**



# D1

GROUND SIGN - 12'H X 13'W

## INTEGRATED DEVELOPMENT Signage Examples



### COLOR SPECIFICATIONS:

- |                                        |          |
|----------------------------------------|----------|
| <b>A</b> MP20147 DURONODIC BRONZE MET. | <b>F</b> |
| <b>B</b> DIG. PRINT                    | <b>G</b> |
| <b>C</b> ORACAL 651-070 BLACK          | <b>H</b> |
| <b>D</b>                               | <b>I</b> |
| <b>E</b>                               | <b>J</b> |

*NOTE: THERE WILL BE COLOR VARIATIONS FROM THIS PRINTED DRAWING TO THE FINAL PRODUCT. COLORS SPECIFIED WILL ALWAYS BE MATCHED AS CLOSELY AS POSSIBLE. RENDERING IS BASED ON ESTIMATED DIMENSIONS. A FINAL SURVEY MAY ALTER ILLUSTRATED REPRESENTATION AND PLACEMENT.*

*IF ILLUMINATED: WILL BE WIRED TO 120 VOLT UNLESS OTHERWISE SPECIFIED. THIS SIGN IS INTENDED TO BE INSTALLED IN ACCORDANCE WITH THE REQUIREMENTS OF ARTICLE 600 OF THE NATIONAL ELECTRICAL CODE AND/OR OTHER APPLICABLE LOCAL CODES. THIS INCLUDES PROPER GROUNDING AND BONDING OF THE SIGN.*

SCI REP:  
JV

DATE:

DESIGNER:  
NK

REVISION DATE:

PERMIT INFORMATION:  
N/A

ART SCALE: 1" = 1' - 0"



# D2

DESIGNATION SIGN - 12'H X 21'-6"W

## INTEGRATED DEVELOPMENT Signage Examples



**COLOR SPECIFICATIONS:**

- A** MP20147 DURONODIC BRONZE MET.
- B** DIG. PRINT
- C** ORACAL 651-070 BLACK
- D**
- E**

- F**
- G**
- H**
- I**
- J**

*NOTE: THERE WILL BE COLOR VARIATIONS FROM THIS PRINTED DRAWING TO THE FINAL PRODUCT. COLORS SPECIFIED WILL ALWAYS BE MATCHED AS CLOSELY AS POSSIBLE. RENDERING IS BASED ON ESTIMATED DIMENSIONS. A FINAL SURVEY MAY ALTER ILLUSTRATED REPRESENTATION AND PLACEMENT.*

*IF ILLUMINATED: WILL BE WIRED TO 120 VOLT UNLESS OTHERWISE SPECIFIED. THIS SIGN IS INTENDED TO BE INSTALLED IN ACCORDANCE WITH THE REQUIREMENTS OF ARTICLE 600 OF THE NATIONAL ELECTRICAL CODE AND/OR OTHER APPLICABLE LOCAL CODES. THIS INCLUDES PROPER GROUNDING AND BONDING OF THE SIGN.*

SCI REP:  
JV

DATE:

DESIGNER:  
NK

REVISION DATE:

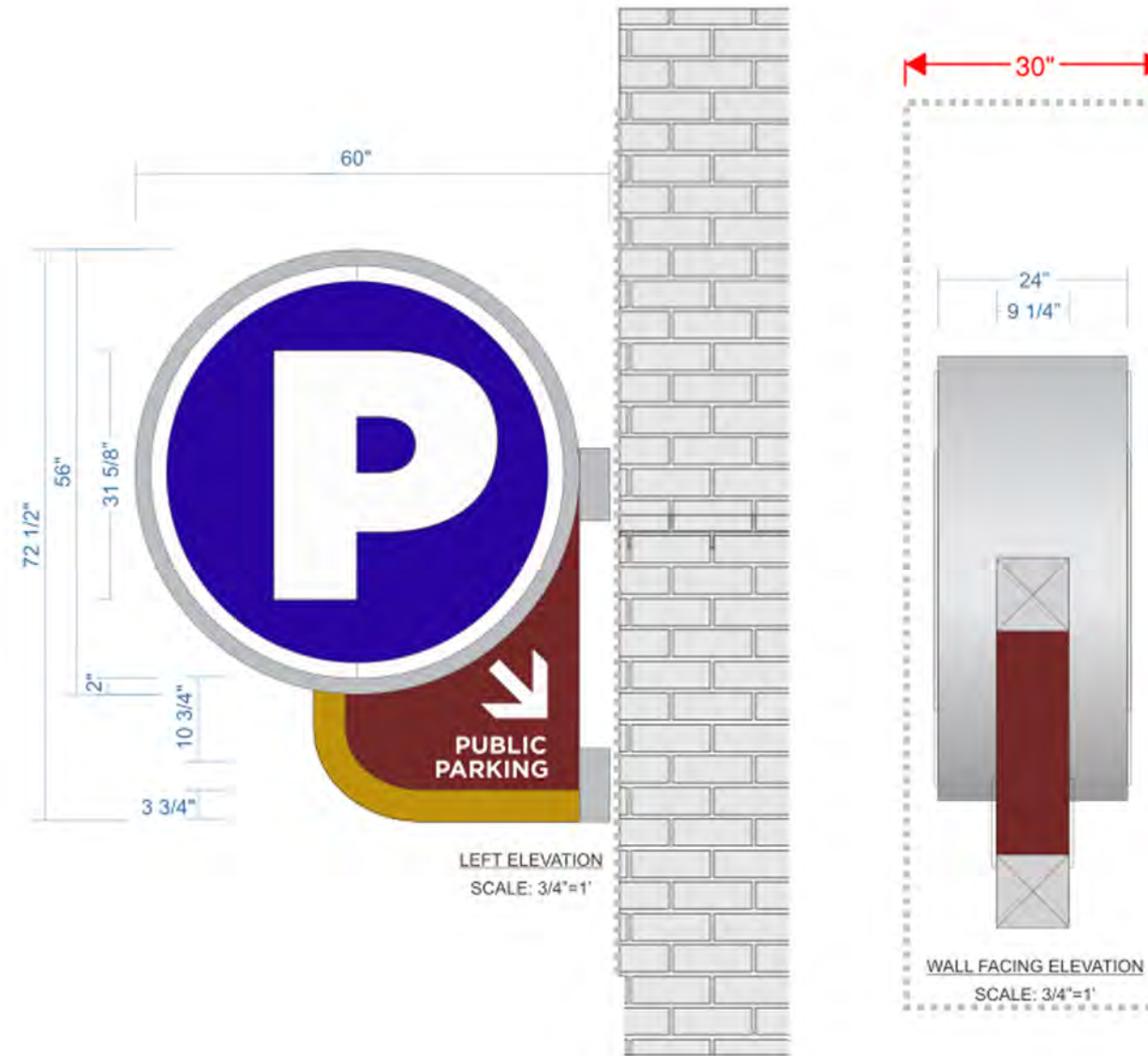
PERMIT INFORMATION:  
N/A



# P1

## PARKING BLADE SIGN - SAMPLE

## INTEGRATED DEVELOPMENT Signage Examples



### FABRICATE AND INSTALL (1) 2 SIDED FACE LIT BLADE SIGN

**MAIN CABINET** - .080" aluminum cladding, .040" returns, & 2" retainer painted MP 413420 brushed aluminum

**BOARDER**: 1/2" Clear Acrylic Push-thrus w/ second surface diffuser vinyl

**FACE**: .090" Aluminum Painted PMS 072C Blue match w/ routed text and boarder

**"P"**: 1/2" push through clear acrylic "P" with second surface diffuser vinyl

**Bottom Arm** - .080" aluminum cladding, routed for 1/2" arrow clear acrylic push-thru w/ second surface diffuser, Front elevation painted PMS 1245C Yellow, side and back elevations painted PMS 1245C Yellow, PMS 491C Red

**Mounting**: Thru-bolt mounted flush via aluminum spacers painted MP 413420 brushed aluminum

**Illumination**: AVL 6500 white LEDs

#### COLOR SPECIFICATIONS:

A	F
B	G
C	H
D	I
E	J

**NOTE:** THERE WILL BE COLOR VARIATIONS FROM THIS PRINTED DRAWING TO THE FINAL PRODUCT. COLORS SPECIFIED WILL ALWAYS BE MATCHED AS CLOSELY AS POSSIBLE. RENDERING IS BASED ON ESTIMATED DIMENSIONS. A FINAL SURVEY MAY ALTER ILLUSTRATED REPRESENTATION AND PLACEMENT.

**IF ILLUMINATED:** WILL BE WIRED TO 120 VOLT UNLESS OTHERWISE SPECIFIED. THIS SIGN IS INTENDED TO BE INSTALLED IN ACCORDANCE WITH THE REQUIREMENTS OF ARTICLE 600 OF THE NATIONAL ELECTRICAL CODE AND/OR OTHER APPLICABLE LOCAL CODES. THIS INCLUDES PROPER GROUNDING AND BONDING OF THE SIGN.

<b>DATE:</b>	<b>REVISION DATE:</b>	<b>PERMIT INFORMATION:</b>	
		N/A	
		<b>FINAL DATE &amp; BY:</b>	<b>SHEET #:</b>