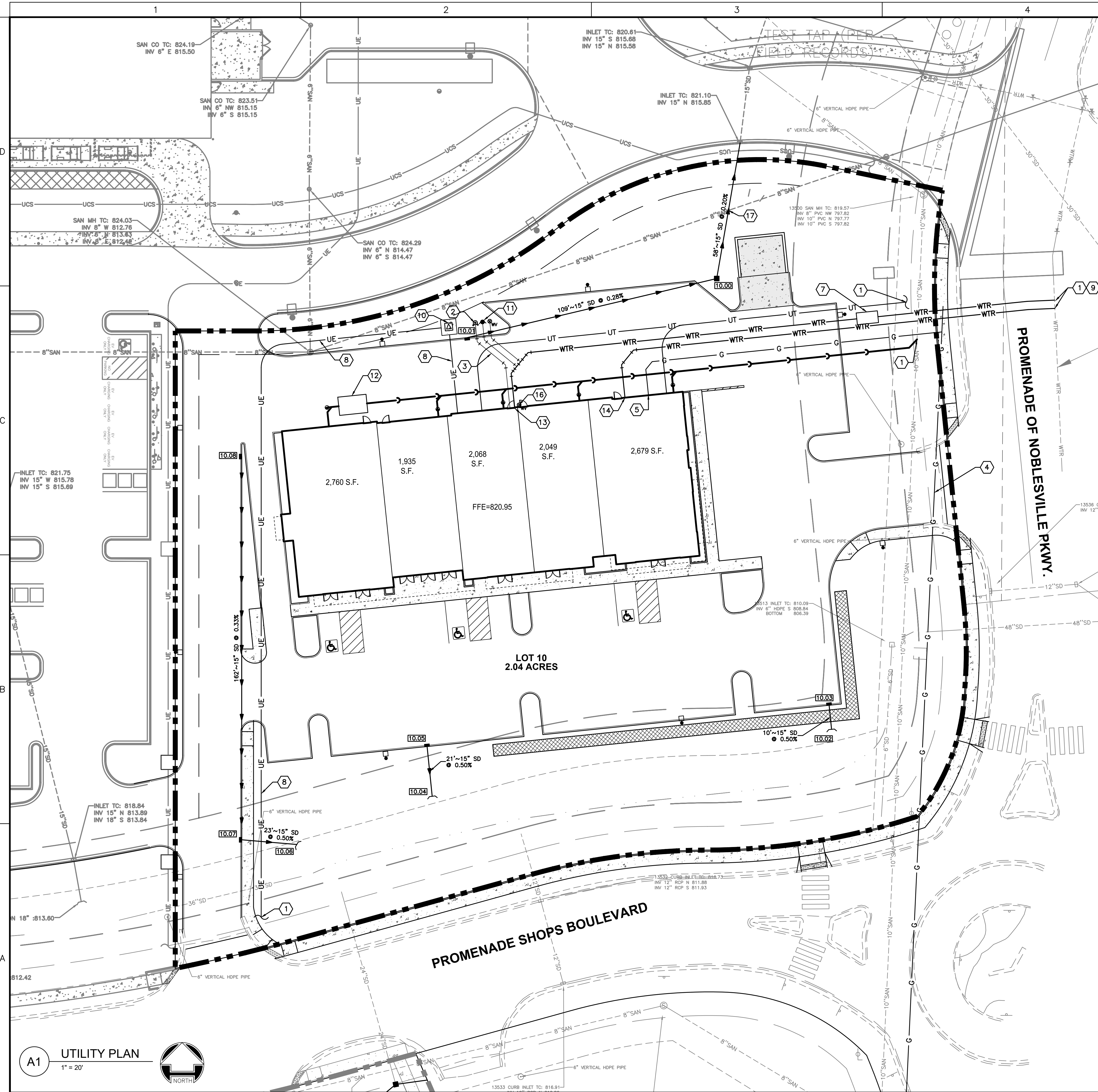


Images: .xrefs: 10021169-TBLK.dwg; 10021169-p.dwg; 10021169-x-nbv survey.dwg; 10021169-UTL-NOTES.dwg
 Layout Tab Name: C-401 - LOT 10
 Last Saved By: A.Reedy, 5/22/2024 8:08:52 AM
 G:\DE\Clients\Meijer\10021169 Meijer NBV OL - Noblesville IN Outlots\4.0 Disciplines\Civil\Cadd\Prelim\10021169-UTL2.dwg Plotted By: Ruebelman, Alicia Plotted: June 27, 2024, 10:56:21 AM



KEYNOTES

- CONNECT TO EXISTING UTILITY PER AGENCY REQUIREMENTS.
- REMOVE FIRE DEPARTMENT CONNECTION. FDC SHALL BE 5" STORZ AT 35-DEGREE DOWNWARD ANGLE AND NOT GREATER THAN 5' ABOVE FINISHED GRADE.
- FIRE DEPARTMENT CONNECTION SERVICE.
- GAS MAIN EXTENSION BY UTILITY COMPANY.
- GAS SERVICE AND METER.
- 15" STORM SEWER STUB TO FUTURE OUTLET.
- PROPOSED WATER VAULT, SEE DETAIL A1 ON C-704, SUMP PUMP TO DISCHARGE TO SURFACE. SEE SITE ELECTRICAL PLAN C-800 FOR ELECTRIC SERVICE TO SUMP PUMP.
- ELECTRICAL SERVICE.
- CONTRACTOR TO VERIFY LOCATION OF WATER MAIN PRIOR TO START OF CONSTRUCTION.
- ELECTRIC TRANSFORMER PER UTILITY COMPANY REQUIREMENT.
- PROPOSED PRIVATE FIRE HYDRANT. ALL PROPOSED FIRE HYDRANTS SHALL BE FACTORY PAINTED IN THE COLOR "SAFETY RED" OR EQUIVALENT. SEE FIRE HYDRANT SPECIFICATIONS ON SHEET C-704 FOR ADDITIONAL DETAILS.
- GREASE INTERCEPTOR WITH SAMPLING BOX. SEE NCS SHEET 15 OF 29 AND ARCHITECTURAL PLANS FOR DETAILS.
- FIRE SERVICE ENTRANCE.
- DOMESTIC SERVICE ENTRANCE.
- IRRIGATION SERVICE ENTRANCE.
- WALL-MOUNTED POST INDICATOR VALVE WITH CONDUIT FOR FIRE DEPARTMENT MONITORING. SEE PLUMBING PLANS FOR ADDITIONAL DETAILS.
- CONCRETE COLLAR UTILITY CROSSING, UNDER 24" OF VERTICAL SEPARATION PROVIDED.
- PROVIDE 24" VERTICAL SEPARATION BETWEEN STORM/SANITARY CROSSING.

GENERAL NOTES

- VERIFY THE HORIZONTAL AND VERTICAL LOCATION OF ALL EXISTING UTILITIES PRIOR TO CONSTRUCTION.
- UTILITIES SHALL END 5 FEET FROM THE BUILDING UNLESS NOTED OTHERWISE.
- PROTECT AND MAINTAIN CROSSINGS OF OTHER UTILITIES.
- ALL DIMENSIONS ARE TO COLUMN LINE, CENTERLINE OF PIPE, CENTER OF MANHOLE, EDGE OF PAVEMENT OR BACK OF CURB WHERE APPLICABLE. DIMENSIONS TO COLUMN LINE ASSUME 9" THICK BUILDING WALL.
- ALL MATERIAL, SPECIFICATIONS, AND CONSTRUCTION METHODS SHALL BE IN CONFORMANCE WITH MEIJER STANDARD SPECIFICATIONS AND DETAILS AND THE CITY OF NOBLESVILLE.
- CONTRACTOR SHALL PERFORM FULL DEPTH REMOVAL AND REPLACEMENT OF EXISTING PAVEMENT PER MEIJER REQUIREMENTS AT PROPOSED UTILITIES INSTALLATION IN EXISTING PAVED AREAS.
- BEFORE COMMENCING WORK, CONTRACTOR SHALL VERIFY ALL LOCATIONS AND ELEVATIONS OF EXISTING UTILITIES.

LEGEND

■	CATCH BASIN	— WTR —	WATER SERVICE
—	CURB INLET	▲	FIRE HYDRANT
●	MANHOLE	⊕	WATER VALVE
○	CLEANOUT	⊕	TEE
XX'~YY' SD	STORM SEWER	— G —	GAS SERVICE
---	UNDERDRAIN	— UT —	UNDERGROUND TELEPHONE SERVICE
⊠	STORM STRUCTURE I.D.	— UE —	UNDERGROUND ELECTRIC SERVICE
—	SANITARY SEWER	□	LIGHT POLE
⊠	SANITARY SEWER I.D.		

SANITARY SEWER NOTES

- ROOF DRAINS, FOUNDATION DRAINS, AND OTHER CLEAN WATER CONNECTIONS TO THE SANITARY SEWER ARE PROHIBITED.

GAS NOTES

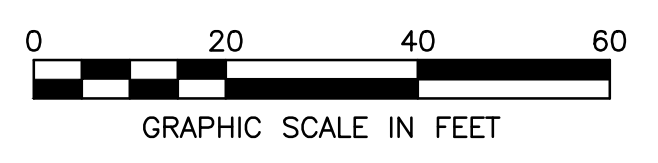
- GAS COMPANY WILL PROVIDE GAS MAIN EXTENSION, SERVICE TAP, METER, REGULATOR, AND INSTALL THE NEW SERVICE LINE TO THE METER.

WATER NOTES

- INSTALL WATER MAIN WITH A MINIMUM OF 5 FEET OF COVER.
- ON SITE HYDRANTS SHALL FACE THE BUILDING.
- PROVIDE A MINIMUM OF EIGHTEEN (18) INCHES OF VERTICAL SEPARATION AND TEN (10) FEET OF HORIZONTAL SEPARATION BETWEEN THE WATER MAIN AND ALL SANITARY AND STORM SEWERS.
- PROVIDE THRUST BLOCKS AT ALL WATER MAIN BENDS, PLUGS AND TEES IF REQUIRED BY MUNICIPALITY.
- HYDRANTS LOCATED IN CURB ISLAND OR GREEN SPACE SHALL BE LOCATED 5' FROM BACK OF CURB OR EDGE OF PAVEMENT (TYP.).
- INSTALL CONCRETE PADS FOR ALL HYDRANT VALVES IN NON-PAVED AREAS.
- EXISTING WATER MAINS AND ALL HYDRANTS REQUIRE TESTING. CONTRACTOR TO COORDINATE WITH COUNTY.

STORM SEWER NOTES

- INSTALL UNDERDRAINS AT ALL PROPOSED CATCH BASINS.
- ALL UNDERDRAINS ARE 4" DIAMETER AT MINIMUM SLOPE OF 0.50% UNLESS OTHERWISE NOTED.
- END SECTIONS ARE INCLUDED IN PIPE LENGTHS SHOWN.
- PROVIDE INLET FILTER FOR ALL CATCH BASIN INLETS.
- PROVIDE RIP RAP AT ALL END SECTIONS UNLESS OTHERWISE NOTED.



WOOLPERT
 ARCHITECTURE ENGINEERING & SURVEYING

333 North Alabama Street
 Suite 200
 Indianapolis, IN 46204
 317.299.7500
 FAX: 317.291.5805

meijer
 2828 WALKER AVENUE
 GRAND RAPIDS, MICHIGAN 49544
 (616) 453-6711

REV.	DATE	DESCRIPTION
1	06/27/24	PC TAC COMMENTS



MEIJER STORE #628 OUTLOTS
 6010 PROMENADE SHOPS BOULEVARD
 NOBLESVILLE, INDIANA

UTILITY PLAN
 LOT 10

ISSUED FOR:

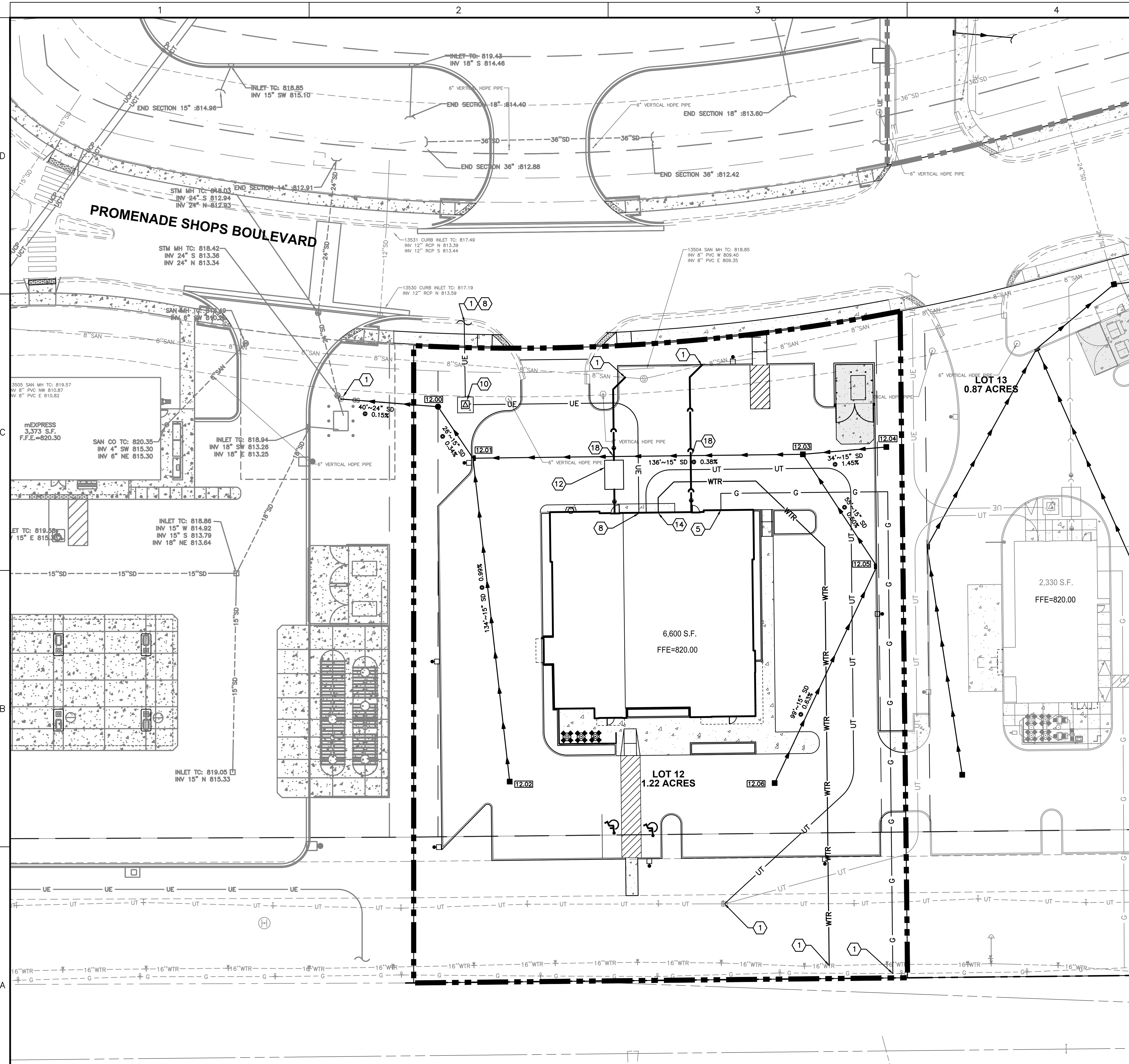
PERMIT	05/22/24
BID	
CONSTRUCTION	
RECORD	

PROJECT MANAGER	DESIGNER
BLS	ANR

JOB NO.
10021169

C-401

Images: .\Xrefs: 10021169-TBLK.dwg; 10021169-p.dwg; 10021169-x-nbv survey.dwg; 10021169-UTL-NOTES.dwg
 Layout Tab Name: C-402 - LOT 12
 Last Saved By: A.Reedy, 5/22/2024 8:08:52 AM
 G:\DE\Clients\Meijer\10021169 Meijer NBV OL - Noblesville IN Outlots\4.0 Disciplines\Civil\Cadd\Prelim\10021169-UTL2.dwg Plotted By: Ruebelman, Alicia Plotted: June 27, 2024, 10:56:30 AM



KEYNOTES

- CONNECT TO EXISTING UTILITY PER AGENCY REQUIREMENTS.
- REMOTE FIRE DEPARTMENT CONNECTION. FDC SHALL BE 5" STORZ AT 35-DEGREE DOWNWARD ANGLE AND NOT GREATER THAN 5' ABOVE FINISHED GRADE.
- FIRE DEPARTMENT CONNECTION SERVICE.
- GAS MAIN EXTENSION BY UTILITY COMPANY.
- GAS SERVICE AND METER.
- 15" STORM SEWER STUB TO FUTURE OUTLET.
- PROPOSED WATER VAULT, SEE DETAIL A1 ON C-704, SUMP PUMP TO DISCHARGE TO SURFACE. SEE SITE ELECTRICAL PLAN C-900 FOR ELECTRIC SERVICE TO SUMP PUMP.
- ELECTRICAL SERVICE.
- CONTRACTOR TO VERIFY LOCATION OF WATER MAIN PRIOR TO START OF CONSTRUCTION.
- ELECTRIC TRANSFORMER PER UTILITY COMPANY REQUIREMENT.
- PROPOSED PRIVATE FIRE HYDRANT. ALL PROPOSED FIRE HYDRANTS SHALL BE FACTORY PAINTED IN THE COLOR "SAFETY RED" OR EQUIVALENT. SEE FIRE HYDRANT SPECIFICATIONS ON SHEET C-704 FOR ADDITIONAL DETAILS.
- GREASE INTERCEPTOR WITH SAMPLING BOX. SEE NCS SHEET 15 OF 29 AND ARCHITECTURAL PLANS FOR DETAILS.
- FIRE SERVICE ENTRANCE.
- DOMESTIC SERVICE ENTRANCE.
- IRRIGATION SERVICE ENTRANCE.
- WALL-MOUNTED POST INDICATOR VALVE WITH CONDUIT FOR FIRE DEPARTMENT MONITORING. SEE PLUMBING PLANS FOR ADDITIONAL DETAILS.
- CONCRETE COLLAR UTILITY CROSSING, UNDER 24" OF VERTICAL SEPARATION PROVIDED.
- PROVIDE 24" VERTICAL SEPARATION BETWEEN STORM/SANITARY CROSSING.

GENERAL NOTES

- VERIFY THE HORIZONTAL AND VERTICAL LOCATION OF ALL EXISTING UTILITIES PRIOR TO CONSTRUCTION.
- UTILITIES SHALL END 5 FEET FROM THE BUILDING UNLESS NOTED OTHERWISE.
- PROTECT AND MAINTAIN CROSSINGS OF OTHER UTILITIES.
- ALL DIMENSIONS ARE TO COLUMN LINE, CENTERLINE OF PIPE, CENTER OF MANHOLE, EDGE OF PAVEMENT OR BACK OF CURB WHERE APPLICABLE. DIMENSIONS TO COLUMN LINE ASSUME 9" THICK BUILDING WALL.
- ALL MATERIAL, SPECIFICATIONS, AND CONSTRUCTION METHODS SHALL BE IN CONFORMANCE WITH MEIWER STANDARD SPECIFICATIONS AND DETAILS AND THE CITY OF NOBLESVILLE.
- CONTRACTOR SHALL PERFORM FULL DEPTH REMOVAL AND REPLACEMENT OF EXISTING PAVEMENT PER MEIWER REQUIREMENTS AT PROPOSED UTILITIES INSTALLATION IN EXISTING PAVED AREAS.
- BEFORE COMMENCING WORK, CONTRACTOR SHALL VERIFY ALL LOCATIONS AND ELEVATIONS OF EXISTING UTILITIES.

LEGEND

- CATCH BASIN
- CURB INLET
- MANHOLE
- CLEANOUT
- XX'-XX" SD STORM SEWER
- UNDERDRAIN
- STORM STRUCTURE I.D.
- SANITARY SEWER
- SANITARY SEWER I.D.
- WTR WATER SERVICE
- ▲ FIRE HYDRANT
- ⊕ WATER VALVE
- ⊕ TEE
- GAS SERVICE
- UNDERGROUND TELEPHONE SERVICE
- UNDERGROUND ELECTRIC SERVICE
- LIGHT POLE

SANITARY SEWER NOTES

- ROOF DRAINS, FOUNDATION DRAINS, AND OTHER CLEAN WATER CONNECTIONS TO THE SANITARY SEWER ARE PROHIBITED.

GAS NOTES

- GAS COMPANY WILL PROVIDE GAS MAIN EXTENSION, SERVICE TAP, METER, REGULATOR, AND INSTALL THE NEW SERVICE LINE TO THE METER.

WATER NOTES

- INSTALL WATER MAIN WITH A MINIMUM OF 5 FEET OF COVER.
- ON SITE HYDRANTS SHALL FACE THE BUILDING.
- PROVIDE A MINIMUM OF EIGHTEEN (18) INCHES OF VERTICAL SEPARATION AND TEN (10) FEET OF HORIZONTAL SEPARATION BETWEEN THE WATER MAIN AND ALL SANITARY AND STORM SEWERS.
- PROVIDE THRUST BLOCKS AT ALL WATER MAIN BENDS, PLUGS AND TEES IF REQUIRED BY MUNICIPALITY.
- HYDRANTS LOCATED IN CURB ISLAND OR GREEN SPACE SHALL BE LOCATED 5' FROM BACK OF CURB OR EDGE OF PAVEMENT (TYP.).
- INSTALL CONCRETE PADS FOR ALL HYDRANT VALVES IN NON-PAVED AREAS.
- EXISTING WATER MAINS AND ALL HYDRANTS REQUIRE TESTING. CONTRACTOR TO COORDINATE WITH COUNTY.

STORM SEWER NOTES

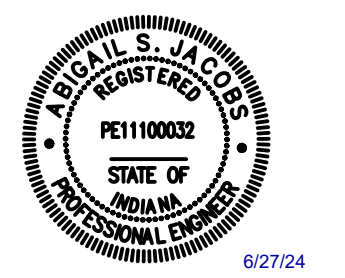
- INSTALL UNDERDRAINS AT ALL PROPOSED CATCH BASINS.
- ALL UNDERDRAINS ARE 4" DIAMETER AT MINIMUM SLOPE OF 0.50% UNLESS OTHERWISE NOTED.
- END SECTIONS ARE INCLUDED IN PIPE LENGTHS SHOWN.
- PROVIDE INLET FILTER FOR ALL CATCH BASIN INLETS.
- PROVIDE RIP RAP AT ALL END SECTIONS UNLESS OTHERWISE NOTED.

WOOLPERT
 ARCHITECTURE | ENGINEERING | SURVEYING

333 North Alabama Street
 Suite 200
 Indianapolis, IN 46204
 317.299.7500
 FAX: 317.291.5805

meijer
 2828 WALKER AVENUE
 GRAND RAPIDS, MICHIGAN 49544
 (616) 453-6711

REV.	DATE	DESCRIPTION
1	06/27/24	PC TAC COMMENTS



MEIJER STORE #628 OUTLOTS
 6010 PROMENADE SHOPS BOULEVARD
 NOBLESVILLE, INDIANA

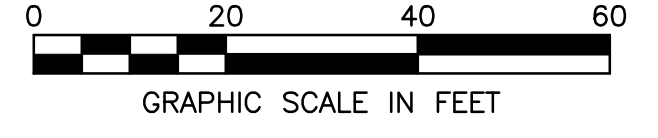
UTILITY PLAN
LOT 12

ISSUED FOR:	
PERMIT	05/22/24
BID	
CONSTRUCTION	
RECORD	
PROJECT MANAGER	DESIGNER
BLS	ANR

JOB NO.
10021169

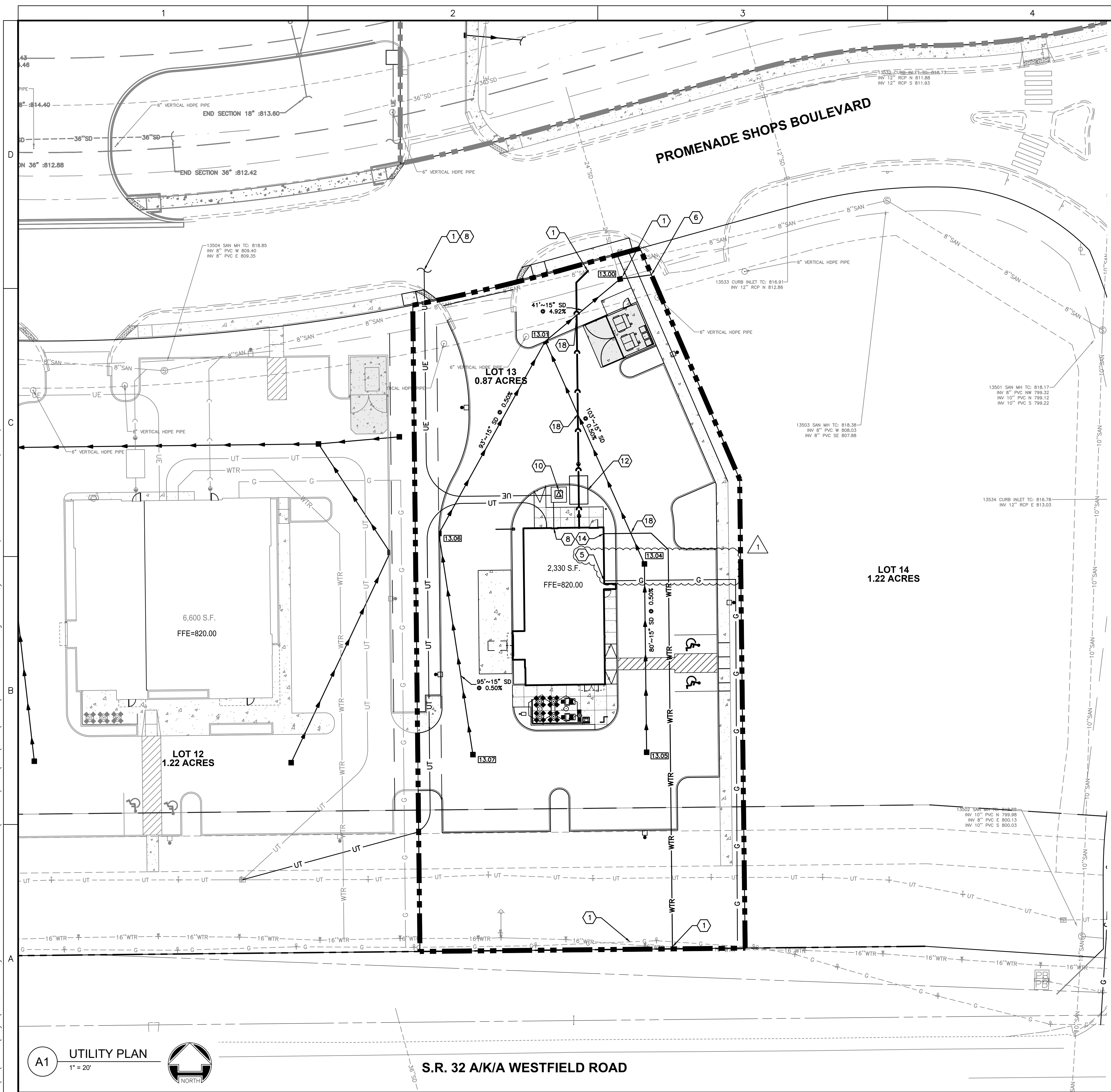
C-402

A1 **UTILITY PLAN**
 1" = 20'



S.R. 32 A/K/A WESTFIELD ROAD

Images: .\Xrefs: 10021169-TBLK.dwg; 10021169-p.dwg; 10021169-x.dwg; 10021169-nbv survey.dwg; 10021169-UTL-NOTES.dwg
 Layout Tab Name: C-403 - LOT 13
 Last Saved By: A.Ruebelman, 6/27/2024 3:06:21 PM
 G:\DE\Clients\Meijer\10021169 Meijer NBV OL - Noblesville IN Outlots\4.0 Disciplines\Civil\Cadd\Prelim\10021169-UTL2.dwg Plotted By: Ruebelman, Alicia Plotted: June 27, 2024, 3:06:51 PM



KEYNOTES

- CONNECT TO EXISTING UTILITY PER AGENCY REQUIREMENTS.
- REMOTE FIRE DEPARTMENT CONNECTION. FDC SHALL BE 5" STORZ AT 35-DEGREE DOWNWARD ANGLE AND NOT GREATER THAN 5' ABOVE FINISHED GRADE.
- FIRE DEPARTMENT CONNECTION SERVICE.
- GAS MAIN EXTENSION BY UTILITY COMPANY.
- GAS SERVICE AND METER.
- 15" STORM SEWER STUB TO FUTURE OUTLET.
- PROPOSED WATER VAULT, SEE DETAIL A1 ON C-704. SUMP PUMP TO DISCHARGE TO SURFACE. SEE SITE ELECTRICAL PLAN C-900 FOR ELECTRIC SERVICE TO SUMP PUMP.
- ELECTRICAL SERVICE.
- CONTRACTOR TO VERIFY LOCATION OF WATER MAIN PRIOR TO START OF CONSTRUCTION.
- ELECTRIC TRANSFORMER PER UTILITY COMPANY REQUIREMENT.
- PROPOSED PRIVATE FIRE HYDRANT. ALL PROPOSED FIRE HYDRANTS SHALL BE FACTORY PAINTED IN THE COLOR "SAFETY RED" OR EQUIVALENT. SEE FIRE HYDRANT SPECIFICATIONS ON SHEET C-704 FOR ADDITIONAL DETAILS.
- GREASE INTERCEPTOR WITH SAMPLING BOX. SEE NCS SHEET 15 OF 29 AND ARCHITECTURAL PLANS FOR DETAILS.
- FIRE SERVICE ENTRANCE.
- DOMESTIC SERVICE ENTRANCE.
- IRRIGATION SERVICE ENTRANCE.
- WALL-MOUNTED POST INDICATOR VALVE WITH CONDUIT FOR FIRE DEPARTMENT MONITORING. SEE PLUMBING PLANS FOR ADDITIONAL DETAILS.
- CONCRETE COLLAR UTILITY CROSSING, UNDER 24" OF VERTICAL SEPARATION PROVIDED.
- PROVIDE 24" VERTICAL SEPARATION BETWEEN STORM/SANITARY CROSSING.

GENERAL NOTES

- VERIFY THE HORIZONTAL AND VERTICAL LOCATION OF ALL EXISTING UTILITIES PRIOR TO CONSTRUCTION.
- UTILITIES SHALL END 5 FEET FROM THE BUILDING UNLESS NOTED OTHERWISE.
- PROTECT AND MAINTAIN CROSSINGS OF OTHER UTILITIES.
- ALL DIMENSIONS ARE TO COLUMN LINE, CENTERLINE OF PIPE, CENTER OF MANHOLE, EDGE OF PAVEMENT OR BACK OF CURB WHERE APPLICABLE. DIMENSIONS TO COLUMN LINE ASSUME 9" THICK BUILDING WALL.
- ALL MATERIAL, SPECIFICATIONS, AND CONSTRUCTION METHODS SHALL BE IN CONFORMANCE WITH MEIJEER STANDARD SPECIFICATIONS AND DETAILS AND THE CITY OF NOBLESVILLE.
- CONTRACTOR SHALL PERFORM FULL DEPTH REMOVAL AND REPLACEMENT OF EXISTING PAVEMENT PER MEIJEER REQUIREMENTS AT PROPOSED UTILITIES INSTALLATION IN EXISTING PAVED AREAS.
- BEFORE COMMENCING WORK, CONTRACTOR SHALL VERIFY ALL LOCATIONS AND ELEVATIONS OF EXISTING UTILITIES.

LEGEND

■	CATCH BASIN	— WTR —	WATER SERVICE
—	CURB INLET	▲	FIRE HYDRANT
●	MANHOLE	⊕ W	WATER VALVE
○	CLEANOUT	⊕ T	TEE
XX'~XX" SD	STORM SEWER	— G —	GAS SERVICE
---	UNDERDRAIN	— UT —	UNDERGROUND TELEPHONE SERVICE
XX	STORM STRUCTURE I.D.	— UE —	UNDERGROUND ELECTRIC SERVICE
—	SANITARY SEWER	□ □ □	LIGHT POLE
—	SANITARY SEWER I.D.		

SANITARY SEWER NOTES

- ROOF DRAINS, FOUNDATION DRAINS, AND OTHER CLEAN WATER CONNECTIONS TO THE SANITARY SEWER ARE PROHIBITED.

GAS NOTES

- GAS COMPANY WILL PROVIDE GAS MAIN EXTENSION, SERVICE TAP, METER, REGULATOR, AND INSTALL THE NEW SERVICE LINE TO THE METER.

WATER NOTES

- INSTALL WATER MAIN WITH A MINIMUM OF 5 FEET OF COVER.
- ON SITE HYDRANTS SHALL FACE THE BUILDING.
- PROVIDE A MINIMUM OF EIGHTEEN (18) INCHES OF VERTICAL SEPARATION AND TEN (10) FEET OF HORIZONTAL SEPARATION BETWEEN THE WATER MAIN AND ALL SANITARY AND STORM SEWERS.
- PROVIDE THRUST BLOCKS AT ALL WATER MAIN BENDS, PLUGS AND TEES IF REQUIRED BY MUNICIPALITY.
- HYDRANTS LOCATED IN CURB ISLAND OR GREEN SPACE SHALL BE LOCATED 5' FROM BACK OF CURB OR EDGE OF PAVEMENT (TYP.).
- INSTALL CONCRETE PADS FOR ALL HYDRANT VALVES IN NON-PAVED AREAS.
- EXISTING WATER MAINS AND ALL HYDRANTS REQUIRE TESTING. CONTRACTOR TO COORDINATE WITH COUNTY.

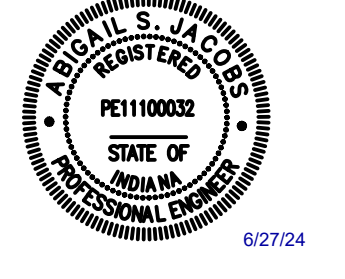
STORM SEWER NOTES

- INSTALL UNDERDRAINS AT ALL PROPOSED CATCH BASINS.
- ALL UNDERDRAINS ARE 4" DIAMETER AT MINIMUM SLOPE OF 0.50% UNLESS OTHERWISE NOTED.
- END SECTIONS ARE INCLUDED IN PIPE LENGTHS SHOWN.
- PROVIDE INLET FILTER FOR ALL CATCH BASIN INLETS.
- PROVIDE RIP RAP AT ALL END SECTIONS UNLESS OTHERWISE NOTED.

WOOLPERT
 ARCHITECTURE ENGINEERING & SURVEYING
 333 North Alabama Street
 Suite 200
 Indianapolis, IN 46204
 317.299.7500
 FAX: 317.291.5805

meijer
 2828 WALKER AVENUE
 GRAND RAPIDS, MICHIGAN 49544
 (616) 453-6711

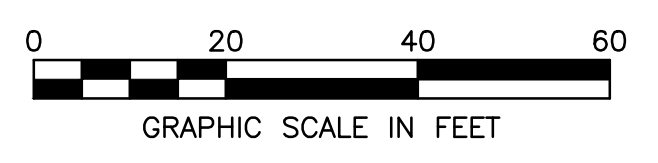
REV.	DATE	DESCRIPTION
1	06/27/24	PC TAC COMMENTS



MEIJEER STORE #628 OUTLOTS
 6010 PROMENADE SHOPS BOULEVARD
 NOBLESVILLE, INDIANA

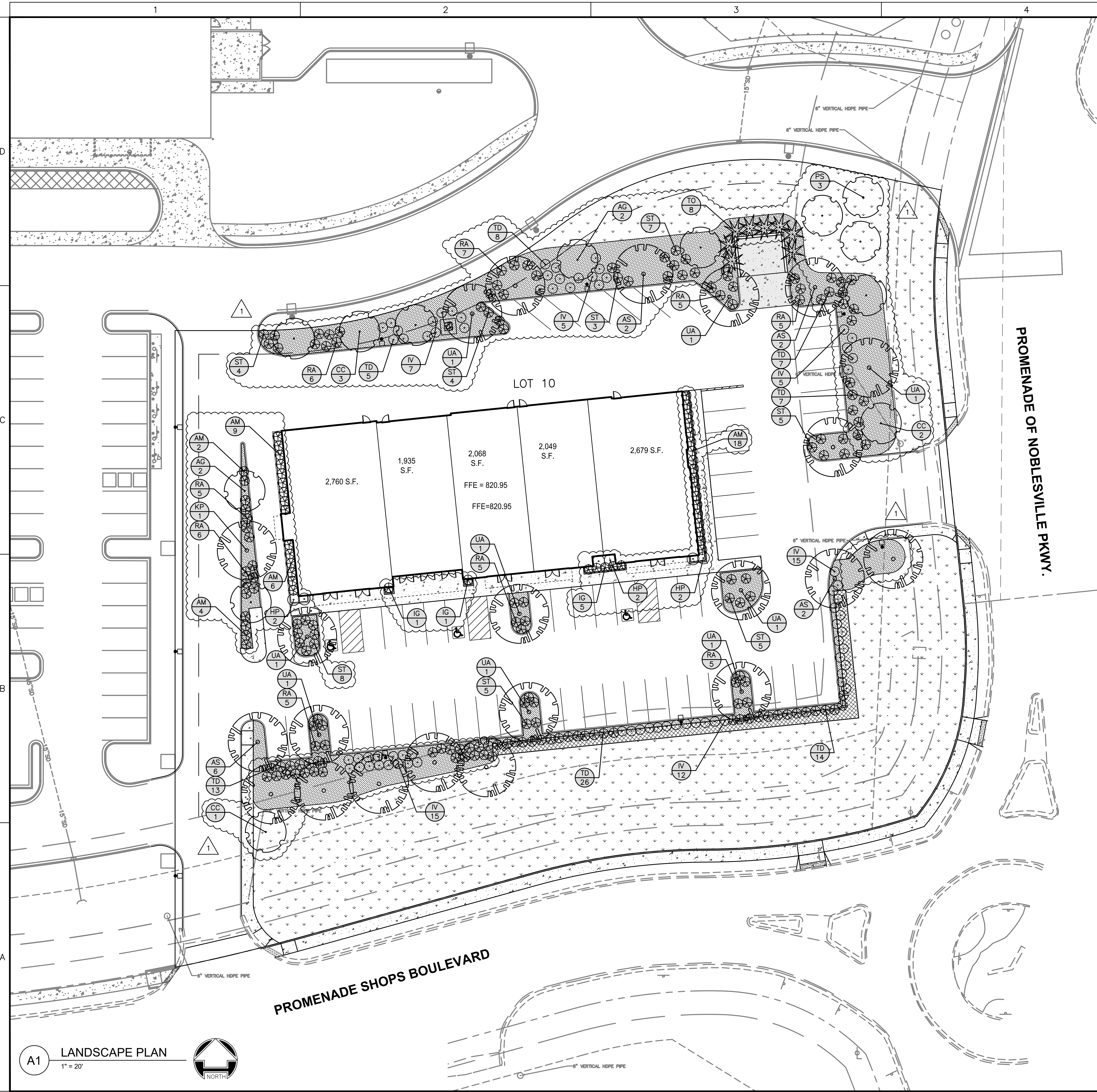
UTILITY PLAN
 LOT 13

ISSUED FOR:	
PERMIT	05/22/24
BID	
CONSTRUCTION	
RECORD	
PROJECT MANAGER	DESIGNER
BLS	ANR
JOB NO. 10021169	
C-403	



A1 UTILITY PLAN
 1" = 20'

Images: .\Xrefs: 10021169-TBLK.dwg; 10021169-p.dwg; 10021169-x.dwg; 10021169-x-NB survey.dwg
 Layout Tab Name: C-600 LOT 10
 Last Saved By: ARuebelman, 6/27/2024 10:36:25 AM
 G:\DE\Clients\Meijer\10021169 Meijer NB OL - Noblesville IN Outlots\4.0 Disciplines\Civil\Cadd\Prelim\10021169-LAN2.dwg Plotted By: Ruebelman, Alicia Plotted: June 27, 2024, 11:00:25 AM



LANDSCAPE NOTES

- COORDINATE PLACEMENT OF PLANTS WITH UTILITY LOCATIONS AND SIGHT LINES TO BUILDING. MAKE ADJUSTMENTS AS REQUIRED TO AVOID PLANTING OVER THE UTILITIES AND/OR WITHIN SIGHT LINES TO ALL MEIJER BUILDING SIGNAGE.
- THE CENTER OF LARGE ISLANDS IS TO BE SIX INCHES HIGHER THAN TOP OF CURB. ENSURE ALL ISLANDS ARE SLOPED FOR POSITIVE DRAINAGE.
- ALL AREAS THAT REQUIRE SEEDING SHALL RECEIVE 4" MINIMUM TOPSOIL, UNLESS NOTED OTHERWISE.
- SEED ALL AREAS INDICATED ON THE LANDSCAPE PLAN, THE SOIL EROSION CONTROL PLAN AND ALL DISTURBED AREA. REVIEW AREAS OF SEEDING WITH CONSTRUCTION MANAGER PRIOR TO ANY SEEDING. ANY AREAS DISTURBED BY THE CONTRACTOR WHICH ARE BEYOND THE LIMITS OF GRADING AND EARTHWORK SHALL BE SEEDED AT NO ADDITIONAL COST TO THE OWNER.
- TOPSOIL SHALL BE TESTED AND AMENDED AS NECESSARY DURING FINAL GRADING AND PREPARATION FOR SEEDING BY CONTRACTOR.
- APPLY STARTER FERTILIZER (16-32-4) AT 250 POUNDS/ACRE TO SEEDED AREAS.
- ALL LANDSCAPE ISLANDS SHALL BE NATURAL COLOR, DYE-FREE, 3" DEEP SHREDDED HARDWOOD MULCH EXCEPT AS NOTED. PLACE MULCH OVER WEED BARRIER FABRIC AND TREAT WITH PRE-EMERGENT HERBICIDE.
- SEE SHEET C-602 FOR PLANT SCHEDULE.
- ALL LANDSCAPING SHALL BE INSTALLED A MINIMUM OF 4' FROM THE EDGE OF PAVEMENT WHERE A VEHICLE WILL OVERHANG A LANDSCAPE BED.

LAWN AREA SEED MIXTURE (TYPE A)

COMMON NAME	PROPT BY WEIGHT	PERCENT PURITY	PERCENT GERMINATION
KENTUCKY BLUE GRASS	20%	95%	85%
TALL FESCUE	70%	95%	85%
PERENNIAL RYE GRASS	10%	95%	85%

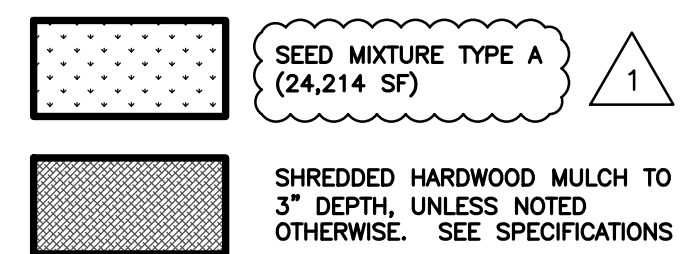
APPLICATION RATE: 8 LBS/1000 FT²

NON-LAWN AREA (TYPE B)

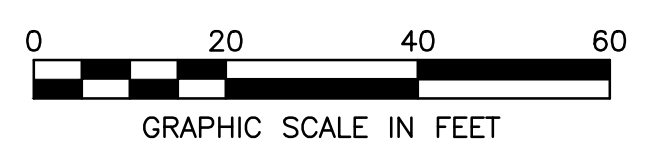
COMMON NAME	PROPT BY WEIGHT	PERCENT PURITY	PERCENT GERMINATION
KENTUCKY BLUE GRASS	30%	95%	85%
KENTUCKY 31 FESCUE	40%	95%	85%
PERENNIAL RYE GRASS	30%	95%	85%

APPLICATION RATE: 5 LBS/1000 FT²

A4 GRASS SEED SCHEDULE
NTS



A5 LANDSCAPING LEGEND
NTS



WOOLPERT
ARCHITECTURE | ENGINEERING | GEOGRAPHICAL

333 North Alabama Street
Suite 200
Indianapolis, IN 46204
317.299.7500
FAX: 317.291.5805

meijer
2828 WALKER AVENUE
GRAND RAPIDS, MICHIGAN 49504
(616) 453-6711

REV.	DATE	DESCRIPTION
1	06/27/24	PC TAC COMMENTS



MEIJER STORE #628 OUTLOTS
6010 PROMENADE SHOPS BOULEVARD
NOBLESVILLE, INDIANA

LANDSCAPE PLAN
LOT 10

ISSUED FOR:

PERMIT	05/22/24
BID	
CONSTRUCTION	
RECORD	

PROJECT MANAGER	DESIGNER
BLS	ANR

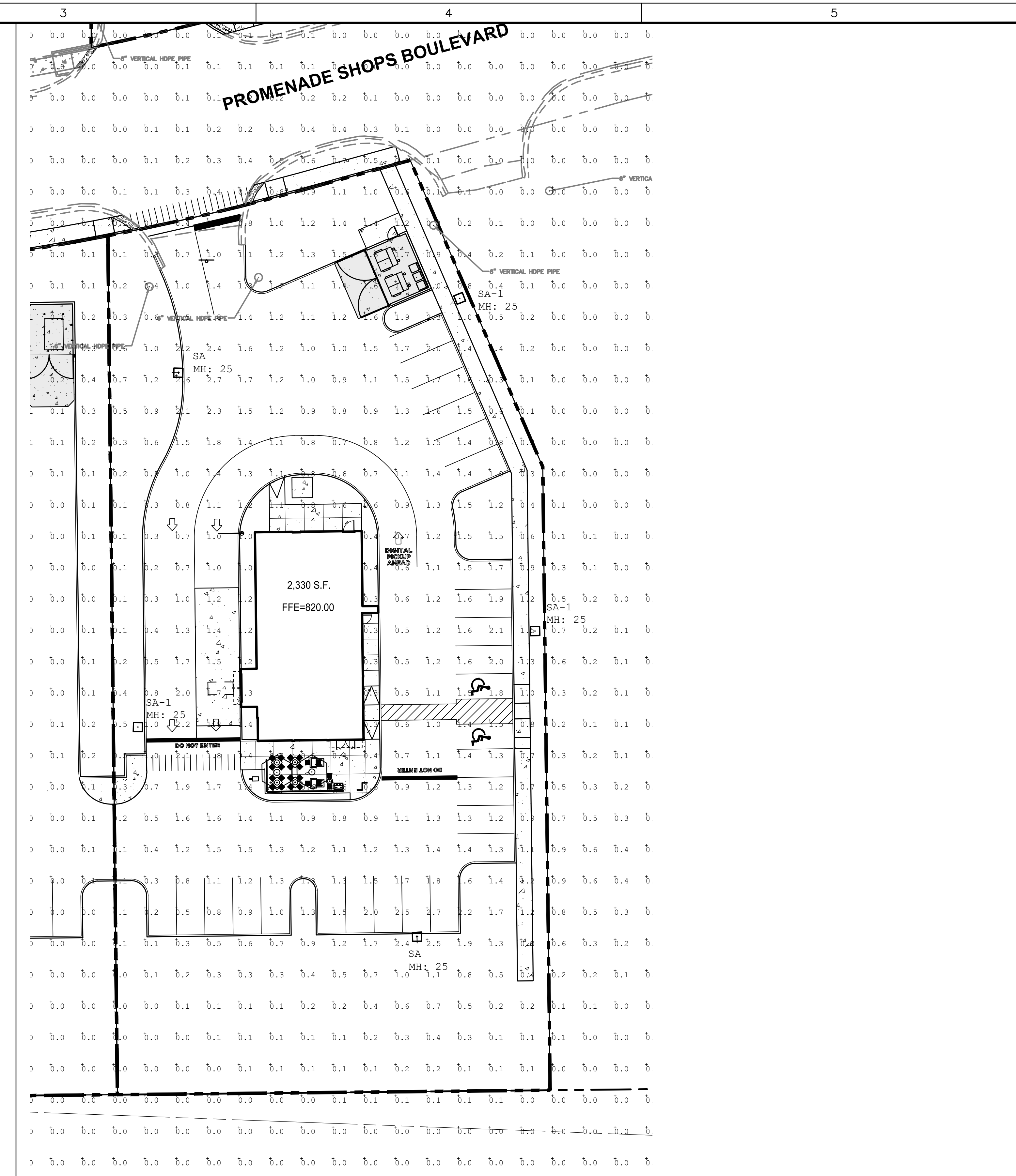
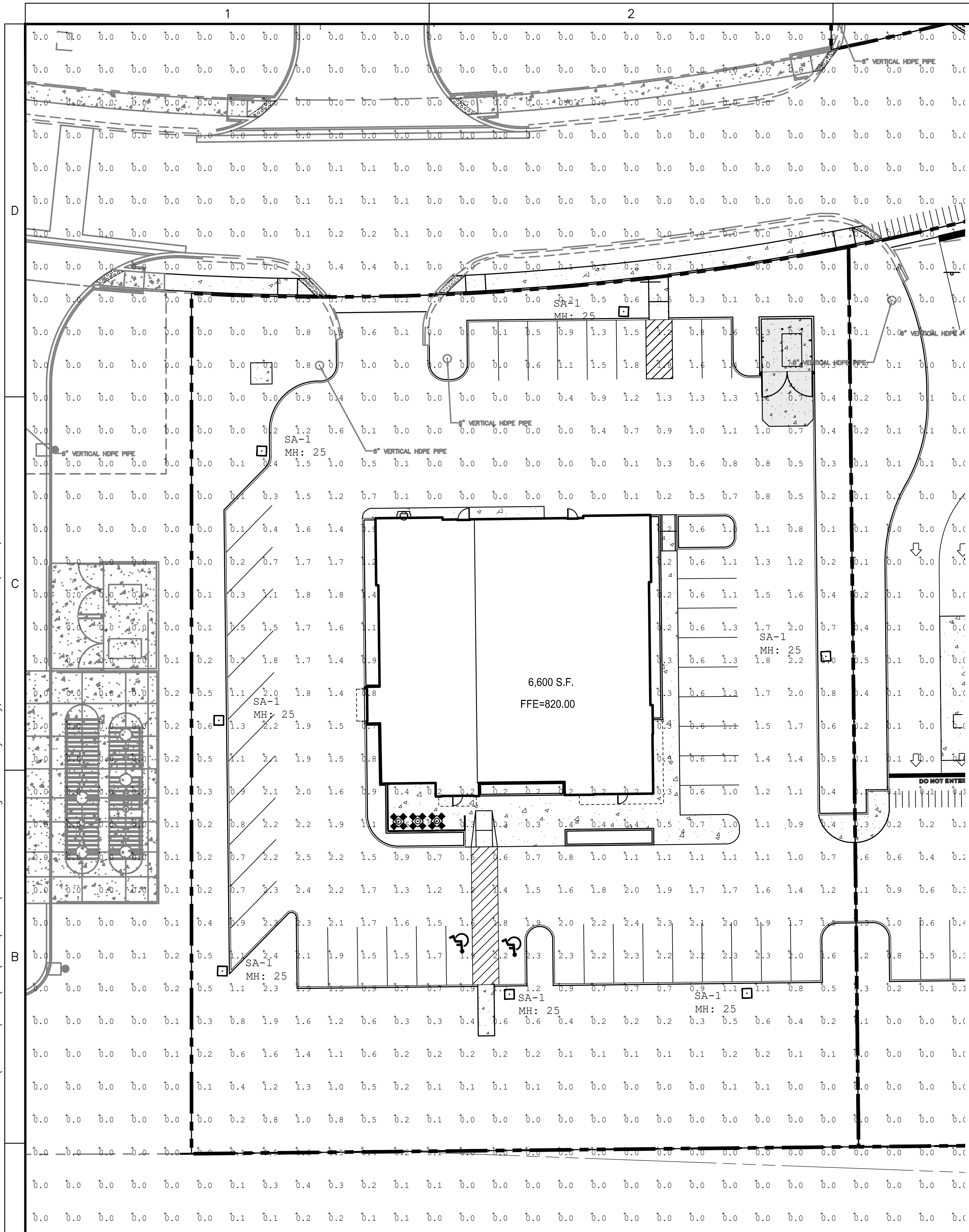
JOB NO.
10021169

C-600

A1 LANDSCAPE PLAN
1" = 20'



Images: .\Xrefs: 10021169-TBLK.dwg; 10021169--x--NBV survey.dwg; 10021169--x--NBV southeast outlot--photometrics.dwg; Meijer NBV north outlot--photometrics.dwg; Meijer NBV southwest outlot--photometrics.dwg
 Layout Tab Name: C-801
 Last Saved By: Hadley, 6/27/2024 7:49:14 AM
 W:\Srv\IN\Outlots\4.0 Disciplines\Civil\Cadd\Prelim\10021169-LTG.dwg Plotted By: Hadley, Dennis Plotted: June 27, 2024, 2:51:01 PM



A1 LIGHTING PLAN
1" = 20'



CALCULATION SUMMARY					
LABEL	AVG	MAX	MIN	AVG/MIN	MAX/MIN
LOT 12	0.78	2.5	0.0	N.A.	N.A.

LUMINAIRE SCHEDULE				
LABEL	QTY	DESCRIPTION	LUM. LUMENS	LLF
SA-1	7	SITE LIGHT ARM MOUNTED, TYPE 3, 8,000 LUMEN LED, 22.5' POLE, HOUSE-SIDE SHIELD	7714	0.891

C5 LUMINAIRE SCHEDULE
NTS

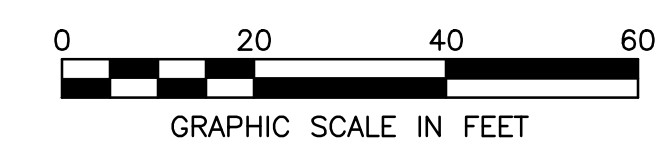
A1 LIGHTING PLAN
1" = 20'



CALCULATION SUMMARY					
LABEL	AVG	MAX	MIN	AVG/MIN	MAX/MIN
LOT 13	0.99	2.7	0.0	N.A.	N.A.

LUMINAIRE SCHEDULE				
LABEL	QTY	DESCRIPTION	LUM. LUMENS	LLF
SA	2	SITE LIGHT ARM MOUNTED, TYPE 3, 11,000 LUMEN LED, 22.5' POLE	10992	0.891
SA-1	3	SITE LIGHT ARM MOUNTED, TYPE 3, 8,000 LUMEN LED, 22.5' POLE, HOUSE-SIDE SHIELD	7714	0.891

C5 LUMINAIRE SCHEDULE
NTS



WOOLPERT
ARCHITECTURE | ENGINEERING | GEOGRAPHICAL
333 North Alabama Street
Suite 200
Indianapolis, IN 46204
317.299.7500
FAX: 317.291.5805

meijer
2828 WALKER AVENUE
GRAND RAPIDS, MICHIGAN 49544
(616) 453-6711

REV.	DATE	DESCRIPTION
1	06/27/24	PC TAC COMMENTS



MEIJER STORE #628 OUTLOTS
6010 PROMENADE SHOPS BOULEVARD
NOBLESVILLE, INDIANA

LIGHTING PLAN
LOTS 12 AND 13

ISSUED FOR:	
PERMIT	05/22/24
BID	
CONSTRUCTION	
RECORD	

PROJECT MANAGER	DESIGNER
BLS	ANR

JOB NO.
10021169

C-801

