



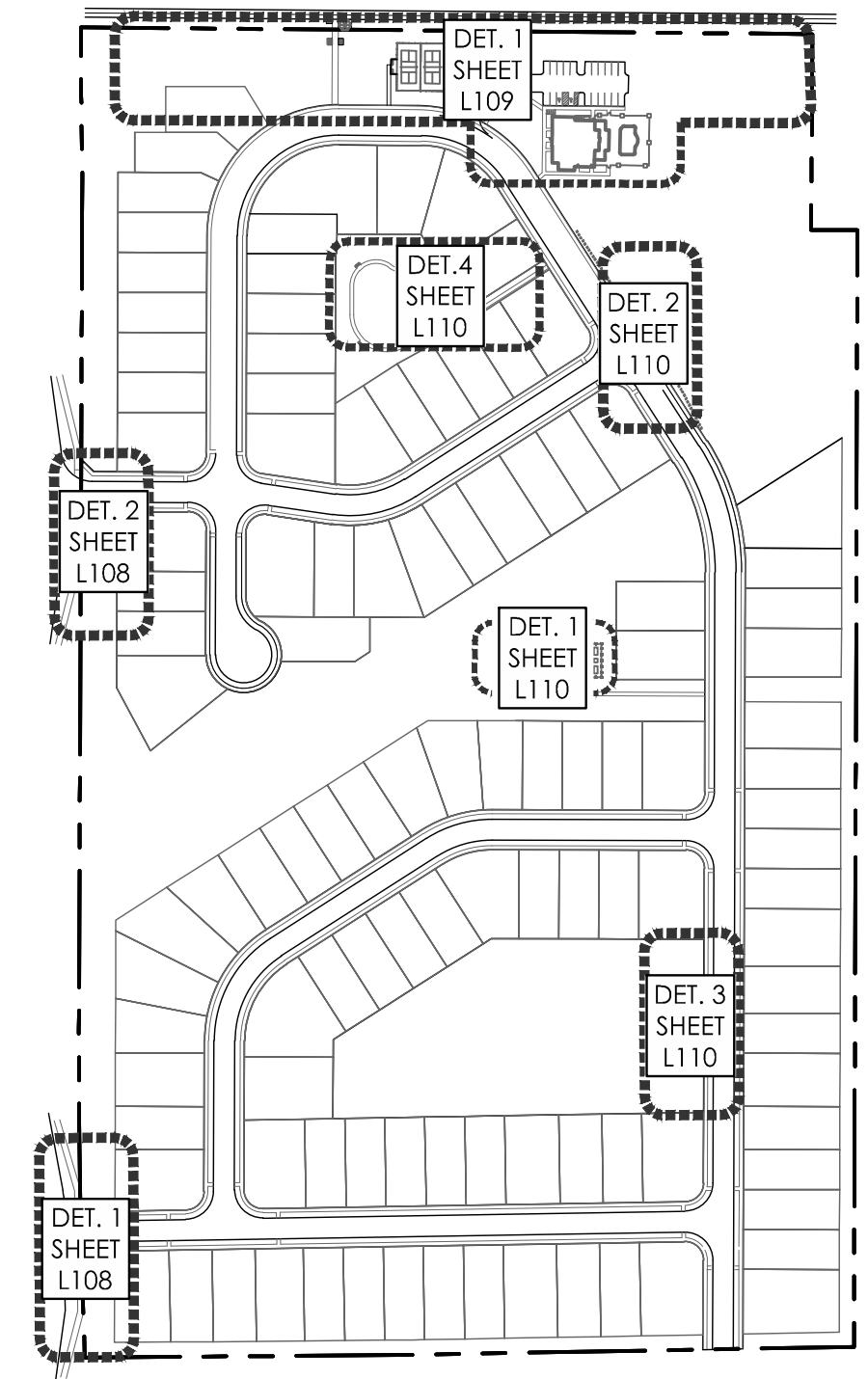
PUBLIC ART TO BE PROVIDED ALONG TRAIL; FINAL LOCATIONS TO BE DETERMINED AT TIME OF FINAL ENGINEERING

PICKLEBALL COURT(S); SEE DETAIL, SHEET L110

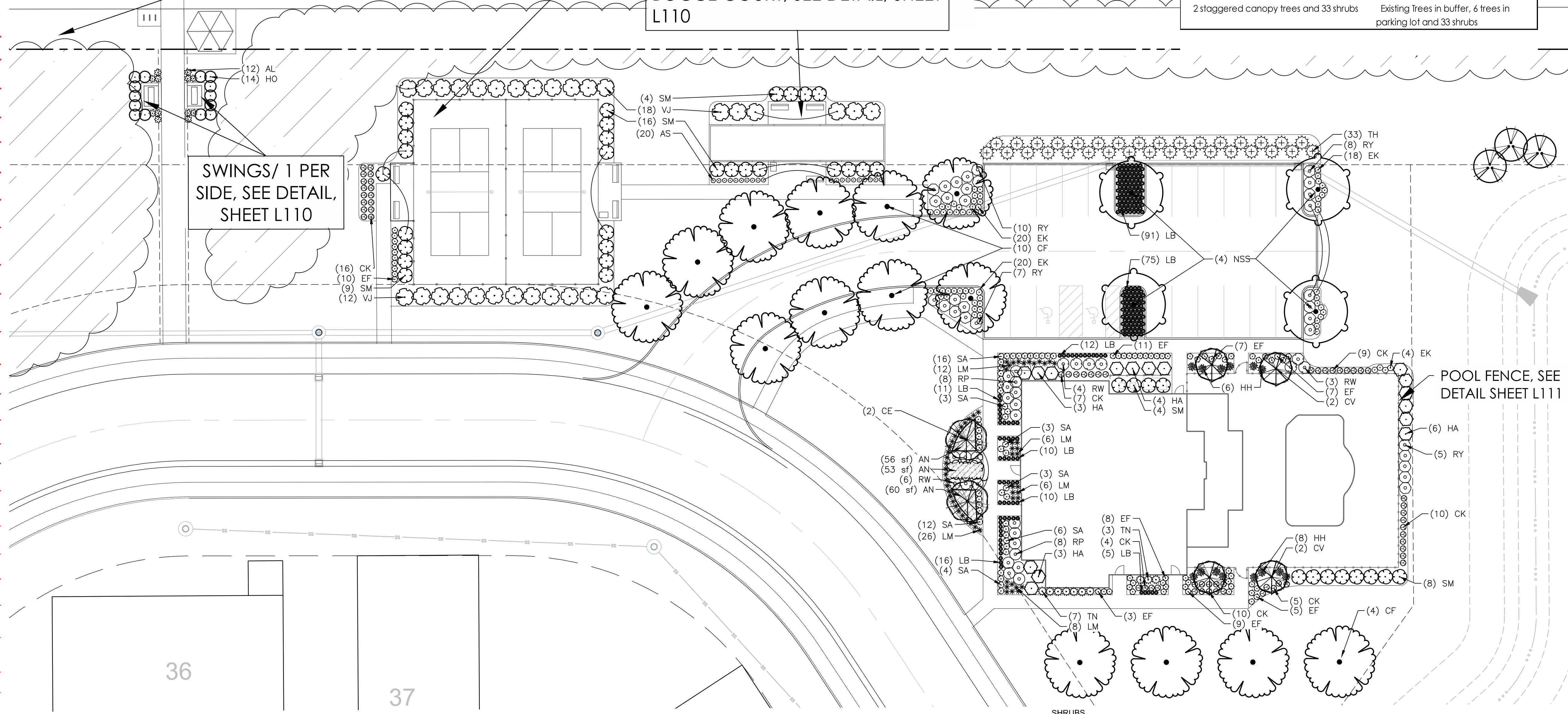
BOCCIE COURT; SEE DETAIL, SHEET L110

SWINGS/ 1 PER SIDE, SEE DETAIL, SHEET L110

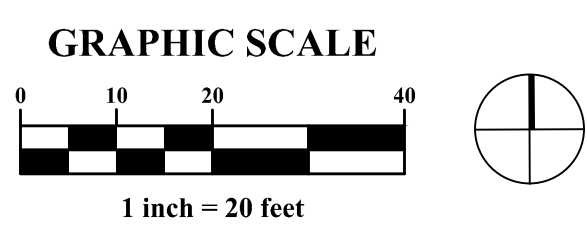
Section 5.C.1. Planting Islands Table 1.05.C.1.	
Required	Provided
5% Landscaping, 319 SF	546 SF
750 SF Maximum Parking Lot Island	(2) Islands- 178 SF and 137 SF
Section 5.D. Table 12.05.D.2	
Rear & interior side yards abutting nonresidential use zone (abuts Midland Trace Trail)	
Required	Provided
10' landscape width	40' peripheral buffer
2 staggered canopy trees and 33 shrubs	Existing Trees in buffer, 6 trees in parking lot and 33 shrubs



ENLARGEMENT KEY PLAN  
1" = 250'



1 - AMENITY AREA LANDSCAPE ENLARGEMENT  
1" = 20'



PLANT SCHEDULE TRAIL CONNECTION

SYMBOL	CODE	QTY	BOTANICAL NAME	COMMON NAME	SIZE	CONDITION
	AL	12	Athyrium filix-femina 'Lady in Red'	Lady in Red Fern	#1	Cont.
	HO	14	Hydrangea quercifolia 'Snow Queen'	Snow Queen Oakleaf Hydrangea	24" Ht.	Cont.

PLANT SCHEDULE AMENITY AREA

SYMBOL	CODE	QTY	BOTANICAL NAME	COMMON NAME	SIZE	CONDITION
	CE	2	Cercis canadensis	Eastern Redbud	10' Ht.	B&B
	CV	4	Crataegus viridis 'Winter King'	'Winter King' Hawthorn	10' Ht.	B&B
	CF	14	Carpinus bet. 'Fastigiata'	Upright Hornbeam	2" Col.	B&B
	NSS	4	Nyssa sylvatica 'Wildfire'	Wildfire Tupelo	2.5' Col.	B&B

SHRUBS

	HA	16	Hydrangea arborescens 'Annabelle'	Annabelle Hydrangea	36" Ht.	B&B or Cont.
	RY	30	Rosa x 'Radsunny'	Yellow Knock Out Rose	#3	Cont.
	RP	16	Rosa x 'Radkopink'	Pink Double Knock Out Rose	#3	Cont.
	RW	13	Rosa x 'Radwhite'	White Knock Out Rose	#3	Cont.
	SM	41	Syringa meyeri 'Palibin'	Dwarf Korean Lilac	24" Ht.	B&B or Cont.
	TN	10	Taxus c. var. 'Nana'	Dwarf Japanese Yew	24" Ht.	B&B
	TH	33	Taxus x media 'Hicksii'	Hicks Yew	18" Ht. min.	B&B or Cont.
	VJ	30	Viburnum x juddii	Judd Viburnum	36" Ht.	B&B or Cont.

GRASSES

	CK	61	Calamagrostis x acutiflora 'Karl Foerster'	Feather Reed Grass	24" Ht. Min.	#2 Cont.
--	----	----	--	--------------------	--------------	----------

PERENNIALS

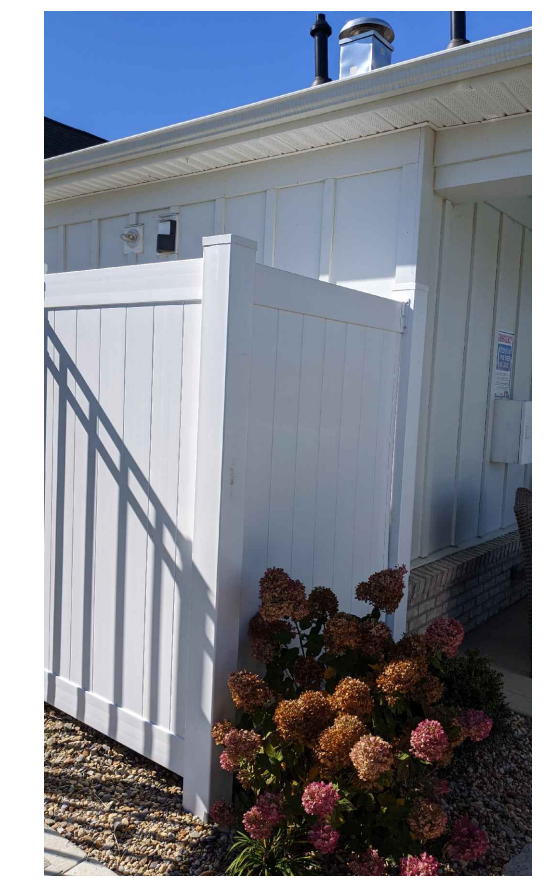
	AS	20	Astilbe x arendsi 'Glu'	Glow Astilbe	#1	Cont.
	LB	230	Liriope muscari 'Big Blue'	Big Blue Lilyturf	#1	Cont.

PERENNIALS/ORN. GRASSES

	EF	60	Echinacea purpurea 'Fragrant Angel'	Fragrant Angel Coneflower	#1	Cont.
	EK	62	Echinacea purpurea 'Kim's Knee High'	Kim's Knee High Coneflower	#1	Cont.
	HH	14	Hosta x 'Halcyon'	Halcyon Hosta	#1	Cont.
	LM	58	Liriope muscari 'Silvery Sunproof'	Silvery Sunproof Lilyturf	#1	Cont.
	SA	47	Sedum x 'Herbstfreude'	Autumn Joy Sedum	#1	Cont.

ANNUALS

CODE	QTY	BOTANICAL NAME	COMMON NAME	SIZE	CONDITION
------	-----	----------------	-------------	------	-----------

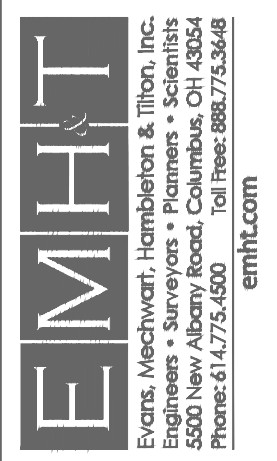


REVISIONS

DATE	DESCRIPTION
7/22/24	PER FAC LETTER 9/21/2024



CITY OF NOBLESVILLE, HAMILTON COUNTY, INDIANA  
PD - PLANNED DEVELOPMENT  
FOR  
THE COURTYARDS OF HAZEL DELL  
AMENITY LANDSCAPE ENLARGEMENTS



DATE

JULY 2, 2024

SCALE

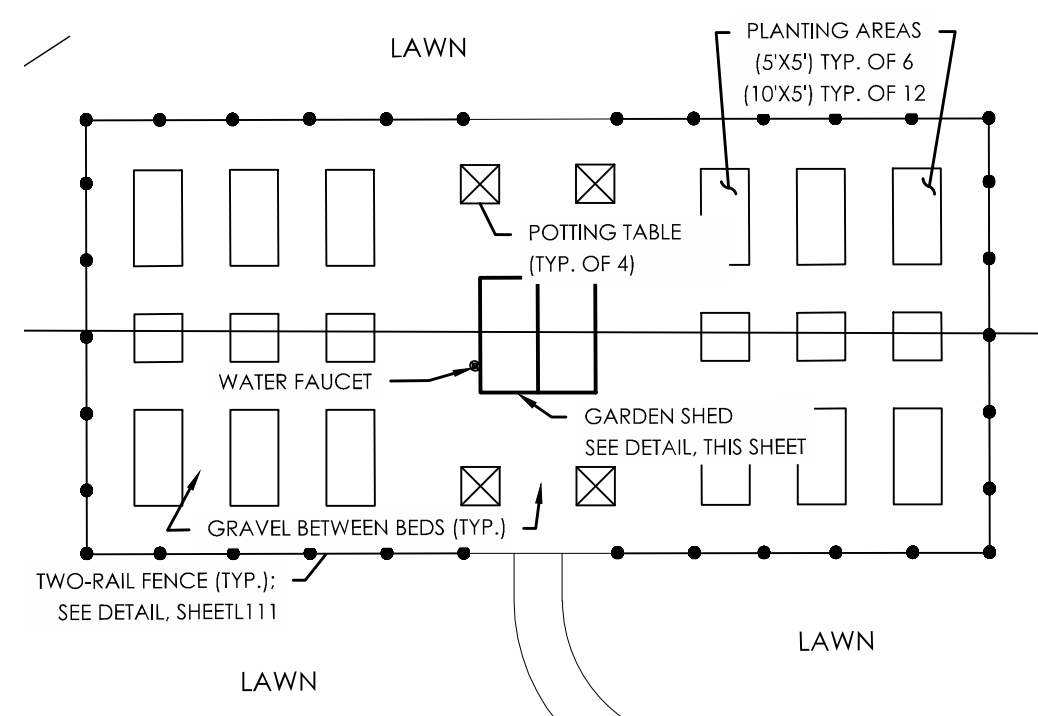
AS NOTED

JOB NO.

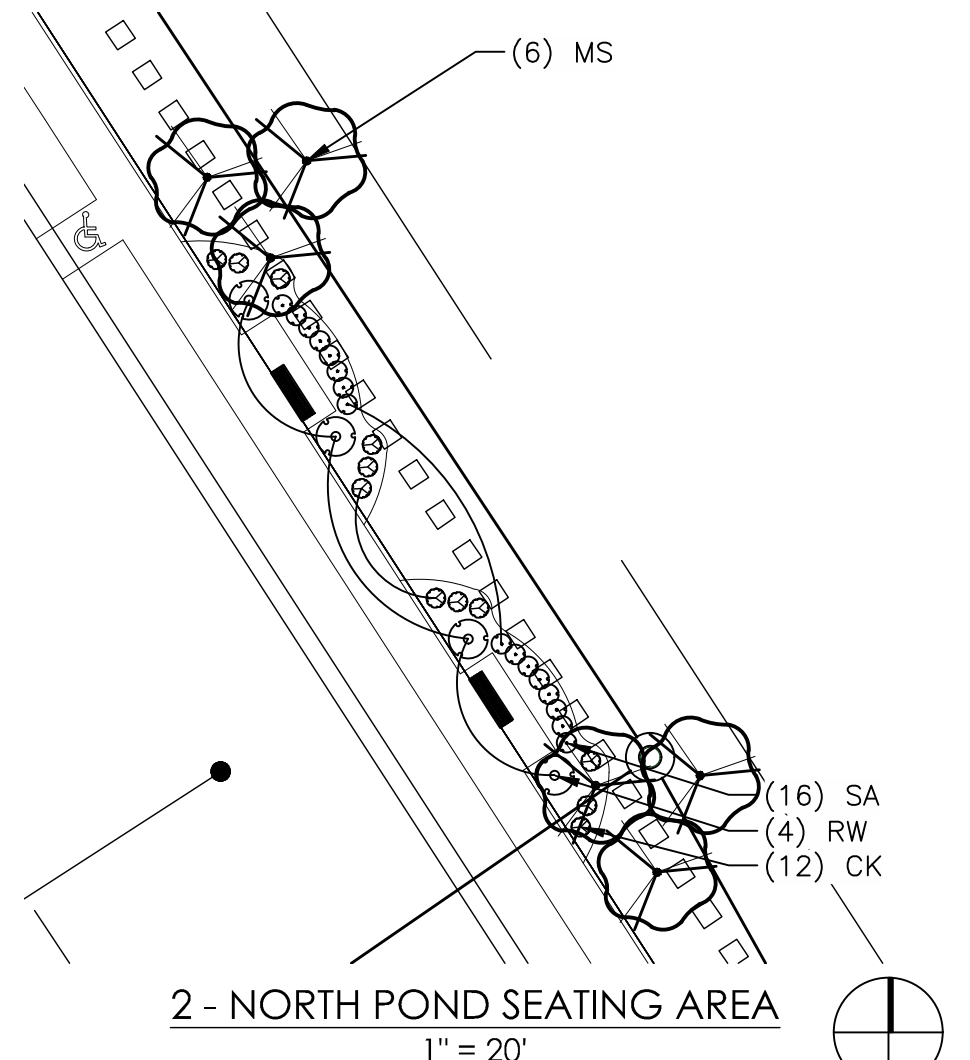
20221063

SHEET

L109



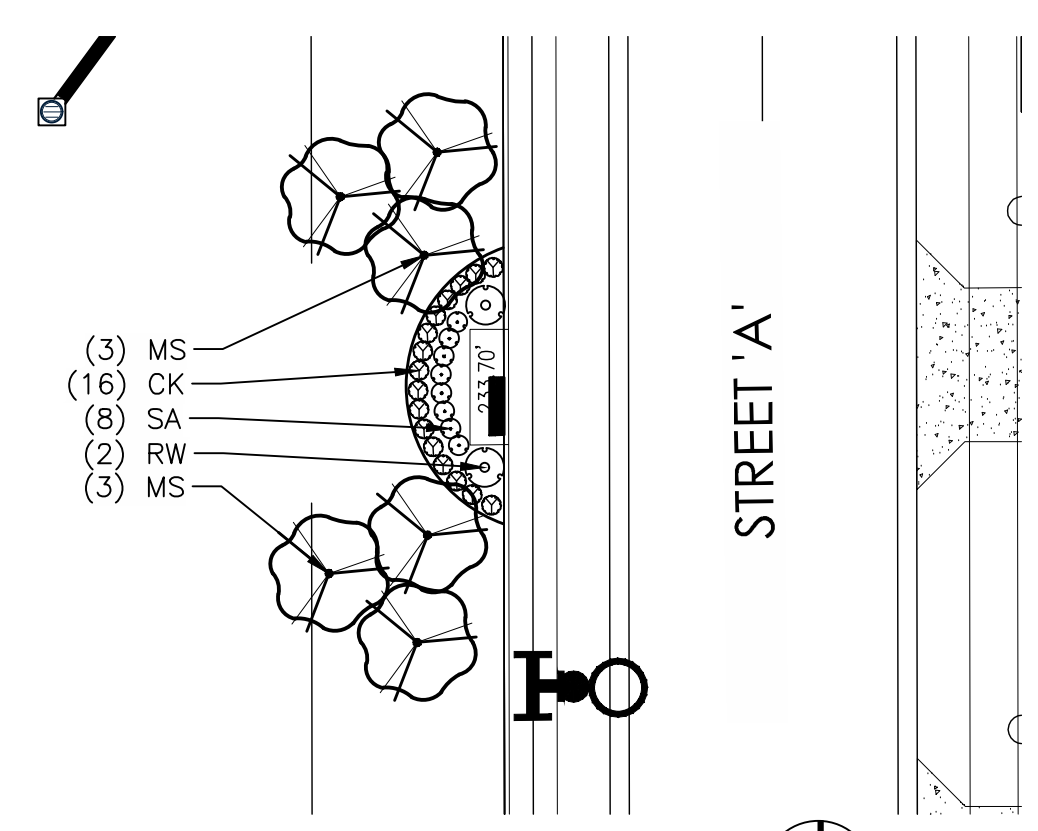
1 - COMMUNITY GARDEN ENLARGEMENT  
1" = 20'



2 - NORTH POND SEATING AREA  
1" = 20'

PLANT SCHEDULE NORTH POND SEATING

SYMBOL	CODE	QTY	BOTANICAL NAME	COMMON NAME	SIZE	CONDITION
<b>TREES</b>						
	MS	6	Malus x 'Spring Snow'	Spring Snow Crab Apple	2.5" Cal.	B&B
<b>SHRUBS</b>						
	RW	4	Rosa x 'Radwhite'	White Knock Out Rose	#3	Cont.
<b>PERENNIALS/ORN. GRASSES</b>						
	CK	12	Calamagrostis x acutiflora 'Karl Foerster'	Feather Reed Grass	#2	Cont.
	SA	16	Sedum x 'Herbstfreude'	Autumn Joy Sedum	#1	Cont.



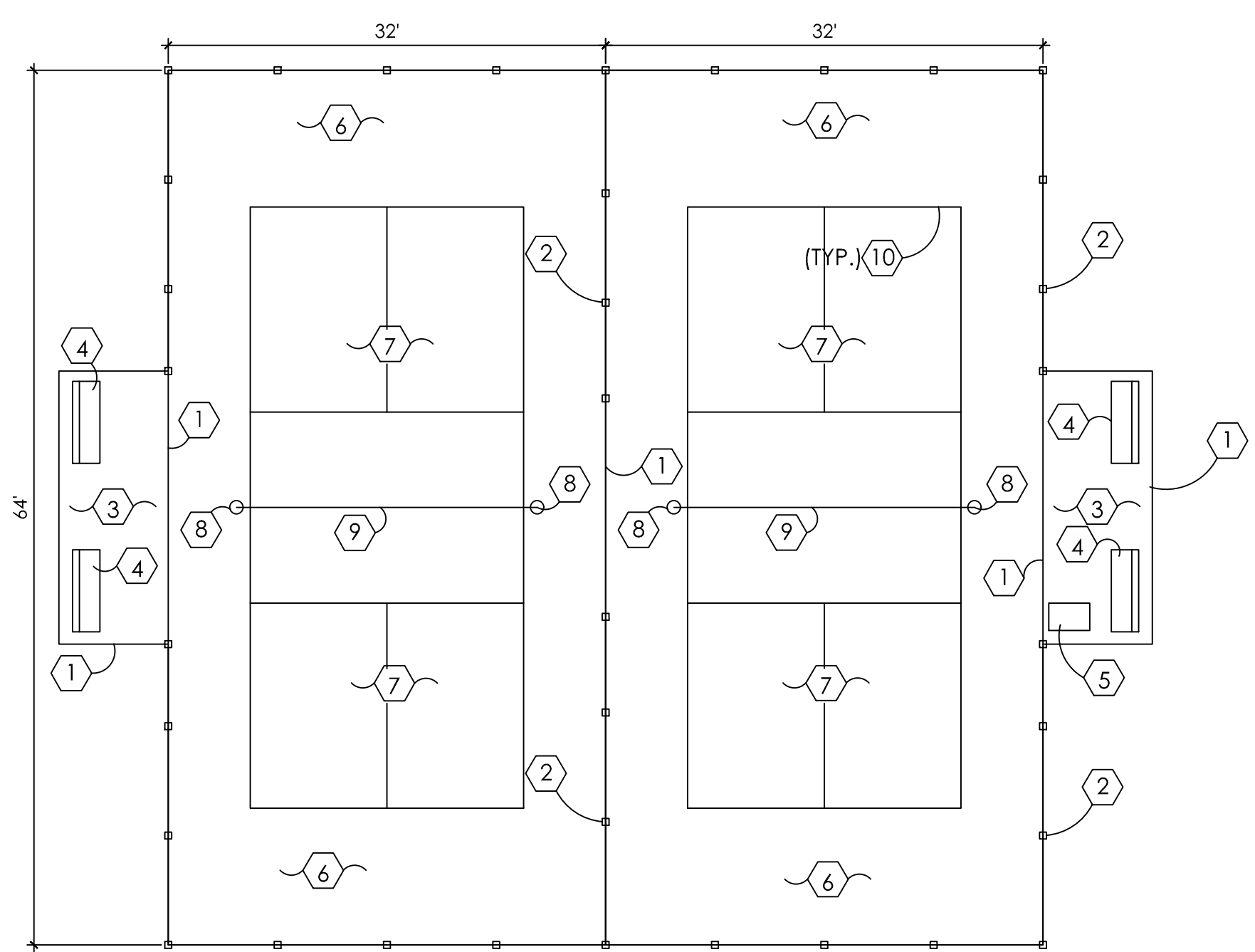
3 - SOUTH POND SEATING AREA  
1" = 20'

PLANT SCHEDULE SOUTH POND SEATING

SYMBOL	CODE	QTY	BOTANICAL NAME	COMMON NAME	SIZE	CONDITION
<b>TREES</b>						
	MS	6	Malus x 'Spring Snow'	Spring Snow Crab Apple	2.5" Cal.	B&B
<b>SHRUBS</b>						
	RW	2	Rosa x 'Radwhite'	White Knock Out Rose	#3	Cont.
<b>PERENNIALS/ORN. GRASSES</b>						
	CK	16	Calamagrostis x acutiflora 'Karl Foerster'	Feather Reed Grass	#2	Cont.
	SA	8	Sedum x 'Herbstfreude'	Autumn Joy Sedum	#1	Cont.



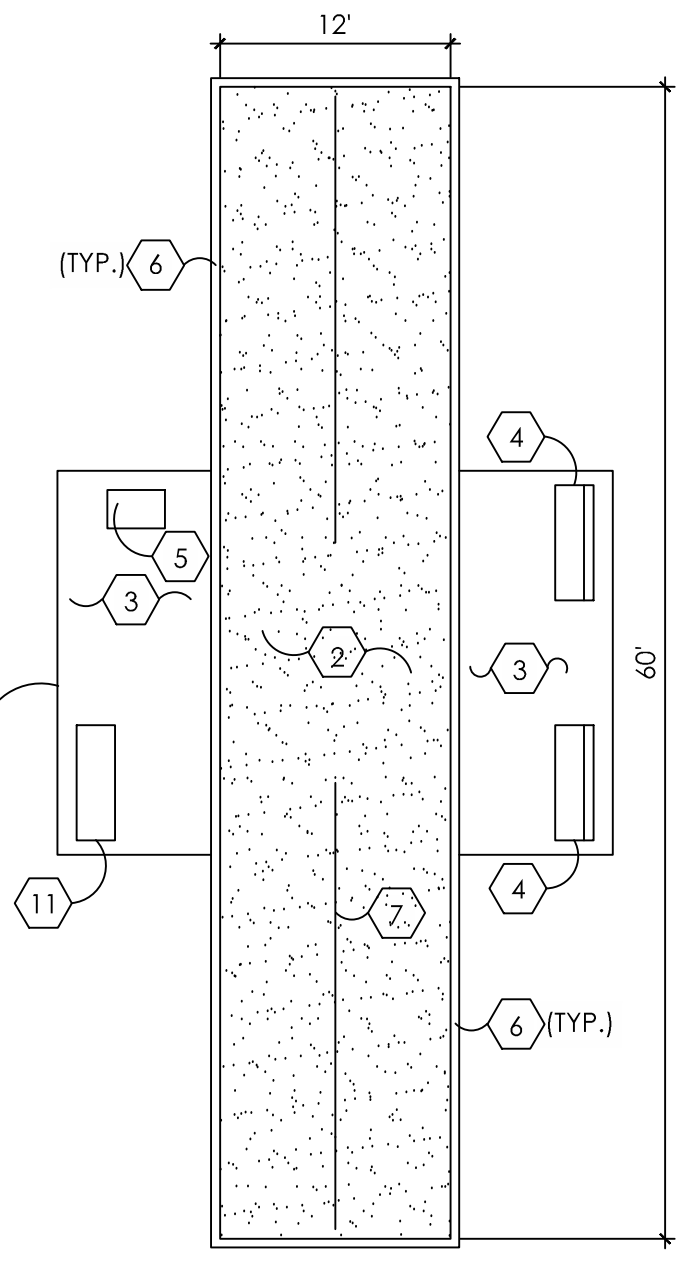
SWING STRUCTURE  
NOT TO SCALE



PICKLEBALL COURT  
SCALE: 1"=10'

PICKLEBALL NOTES

- PAVEMENTS TO MEET FLUSH.
- 48" HGT. BLACK VINYL COATED CHAIN LINK FENCE, OR OWNER APPROVED EQUAL. 3" TERMINALS AND 2.5" LINE POSTS TO BE SET IN CONCRETE FOOTING WITH 1 1/2" TOP AND BOTTOM RAILS.
- SEATING AREA. FINISH MATERIALS AND COLOR BY OWNER
- 4 FT. OUTDOOR PARK BENCH WITH BACK - STEEL SLAT - BLACK, BY GLOBAL INDUSTRIAL, OR OWNER APPROVED EQUAL. WWW.GLOBALINDUSTRIAL.COM. SEE DETAIL, THIS SHEET
- OUTDOOR STORAGE BOX, BY OWNER
- ASPHALT COURT PLAYING SURFACE IN GREEN COATING
- ASPHALT COURT PLAYING SURFACE IN BLUE COATING
- NET POST IN SLEEVE. INSTALL STEEL GROUND SLEEVES IN CONCRETE FOOTING FOR 3" INTERNAL WIND NET POST, AVAILABLE THROUGH TOTAL TENNIS, INC., OR OWNER APPROVED EQUAL. WWW.TOTALTENNISINC.COM
- TII CHAMPIONSHIP PICKLEBALL NET, OR OWNER APPROVED EQUAL. AVAILABLE THROUGH TOTAL TENNIS, INC. WWW.TOTALTENNISINC.COM
- WHITE TEXTURED LINE PAINT, USE NOVATEX TEXTURED LINE PAINT OR OWNER APPROVED EQUAL
- 4 FT. OUTDOOR PARK BACKLESS BENCH - STEEL SLAT - BLACK, BY GLOBAL INDUSTRIAL, OR OWNER APPROVED EQUAL. WWW.GLOBALINDUSTRIAL.COM. SEE DETAIL, THIS SHEET

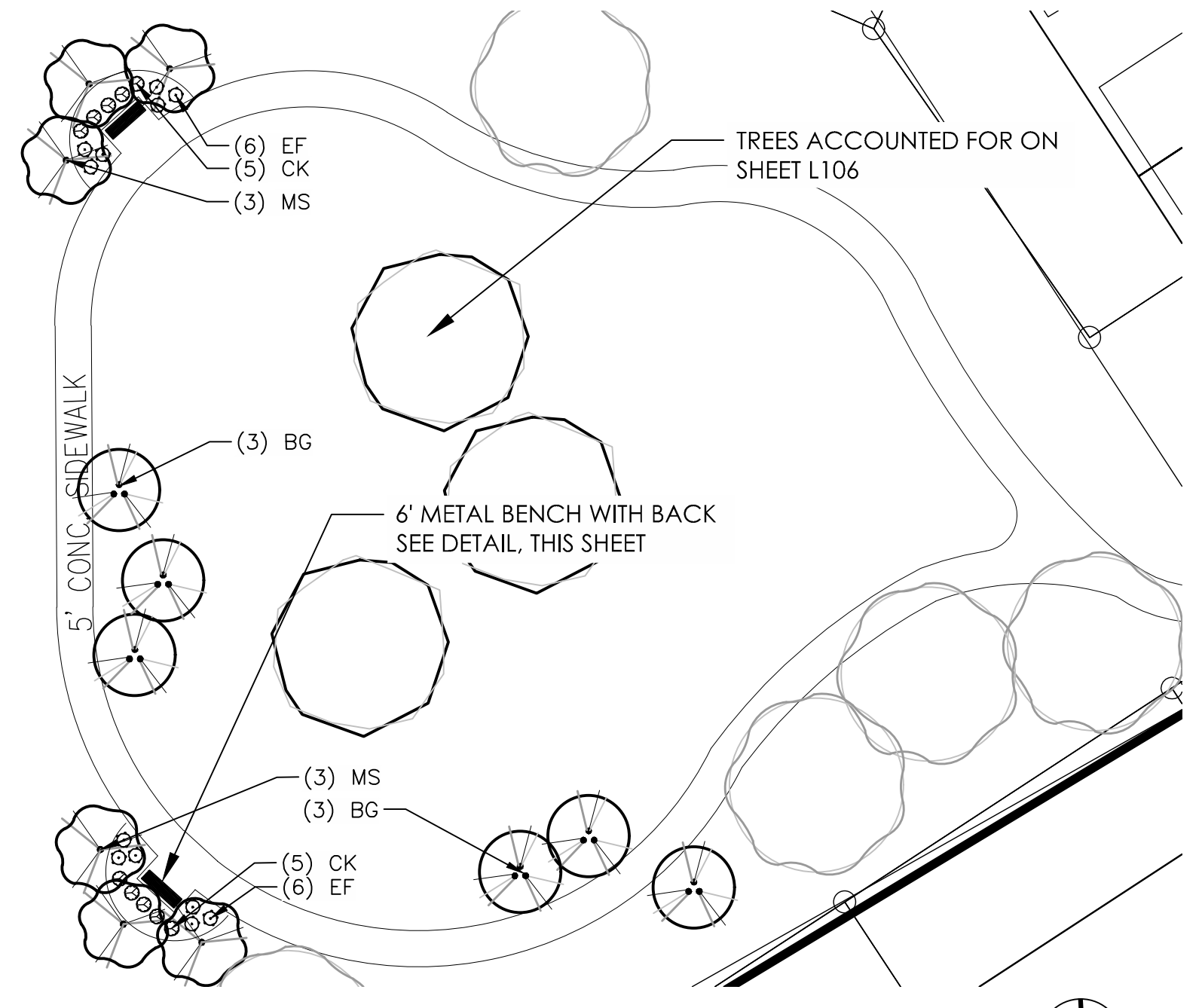


BOCCE BALL COURT  
SCALE: 1"=10'

SIDEWALK ACCESS - VARIES BY LOCATION

BOCCE NOTES

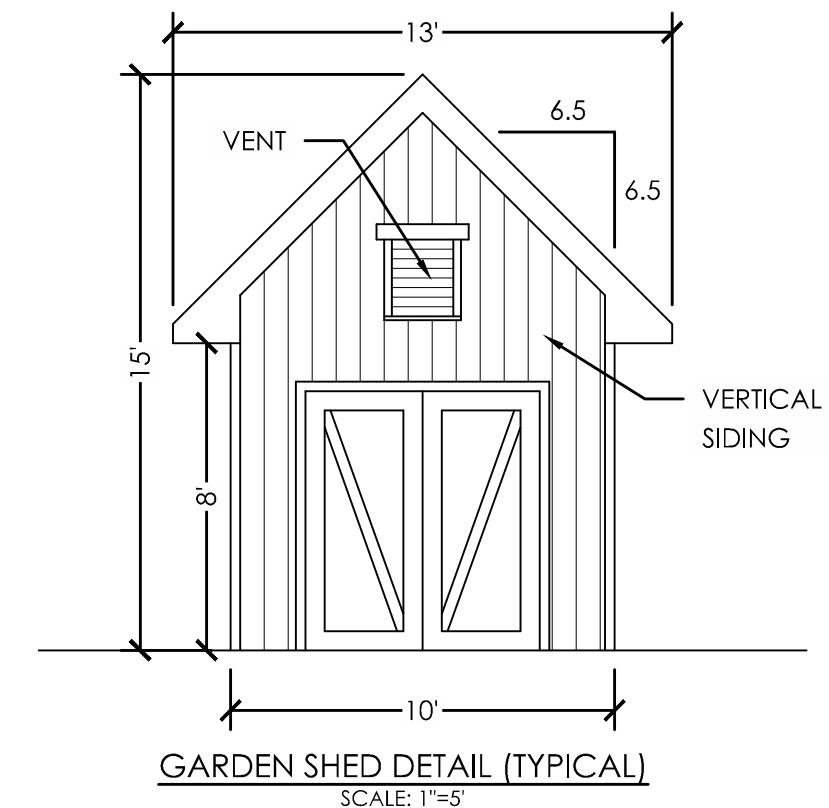
- PAVEMENTS TO MEET FLUSH.
- BRASSFIELD FINES BOCCE COURT, SEE DETAIL 5, THIS SHEET.
- SEATING AREA, FINISH MATERIALS AND COLOR BY OWNER.
- 4 FT. OUTDOOR PARK BENCH WITH BACK - STEEL SLAT - BLACK, BY GLOBAL INDUSTRIAL, OR OWNER APPROVED EQUAL. WWW.GLOBALINDUSTRIAL.COM. SEE DETAIL, THIS SHEET
- OUTDOOR STORAGE BOX, BY OWNER
- BOCCE COURT EDGING.
- 6" DUAL PERFORATED DRAINAGE PIPE, SLOPE AT MIN. .75%, TIE INTO LOCAL DRAINAGE STRUCTURE.



4 - COMMUNITY TRAIL AND SEATING AREA ENLARGEMENT  
1" = 20'

PLANT SCHEDULE NORTH OPEN SPACE

SYMBOL	CODE	QTY	BOTANICAL NAME	COMMON NAME	SIZE	CONDITION
<b>TREES</b>						
	MS	6	Malus x 'Spring Snow'	Spring Snow Crab Apple	2.5" Cal.	B&B
<b>ORNAMENTAL TREES</b>						
	BG	6	Betula n. 'Cully Improved'	Heritage River Birch	10' Ht.	B&B
<b>PERENNIALS/ORN. GRASSES</b>						
	CK	10	Calamagrostis x acutiflora 'Karl Foerster'	Feather Reed Grass	#2	Cont.
	EF	12	Echinacea purpurea 'Fragrant Angel'	Fragrant Angel Coneflower	#1	Cont.



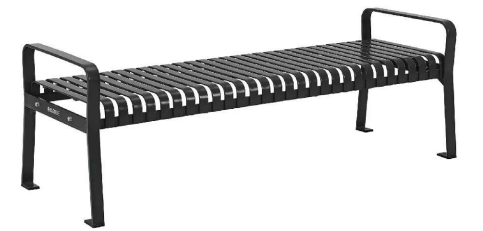
GARDEN SHED DETAIL (TYPICAL)  
SCALE: 1"=5'



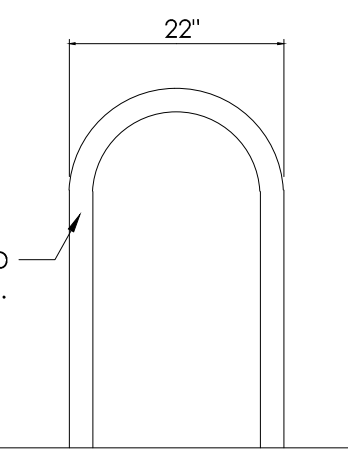
LOW-RAIL FENCE, POTTING TABLE, AND GARDEN SHED (TYPICAL)



6' METAL BENCH WITH BACK  
OR OWNER APPROVED EQUAL  
NOT TO SCALE



6' METAL BACKLESS BENCH  
OR OWNER APPROVED EQUAL  
NOT TO SCALE



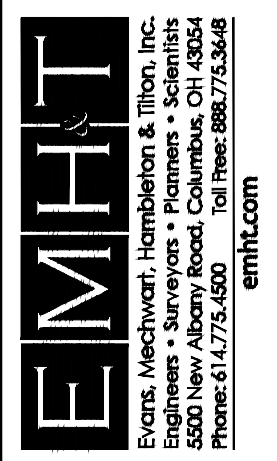
BIKE RACK DETAIL (BLACK)  
NOT TO SCALE  
BIKE RACK LOCATION TO BE APPROVED BY THE CITY

Notes:  
1. All dimensions as shown hereon are approximate.

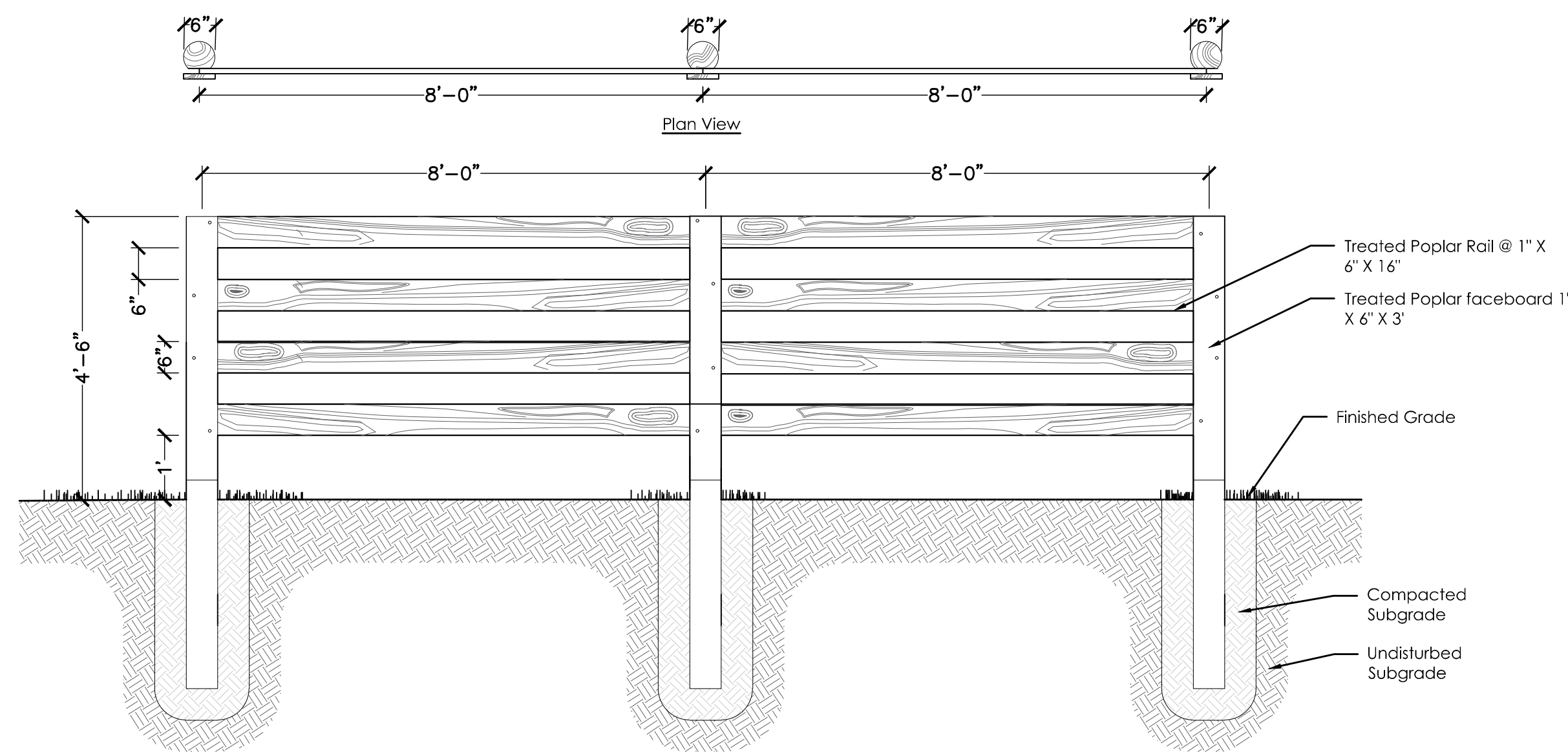
DATE	DESCRIPTION
7/2/24	PER FAC LETTER 3/27/2024



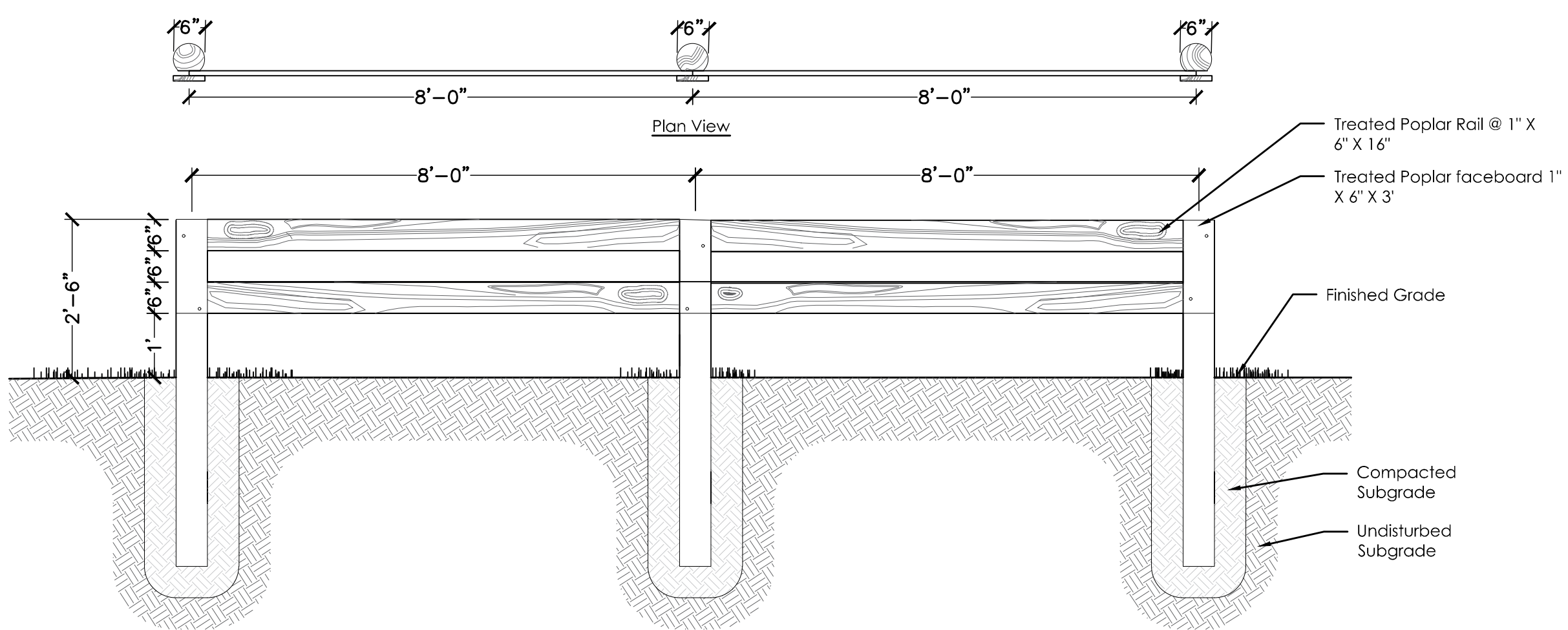
CITY OF NOBLESVILLE, HAMILTON COUNTY, INDIANA  
PD - PLANNED DEVELOPMENT  
FOR  
THE COURTYARDS OF HAZEL DELL  
AMENITY AREA DETAILS



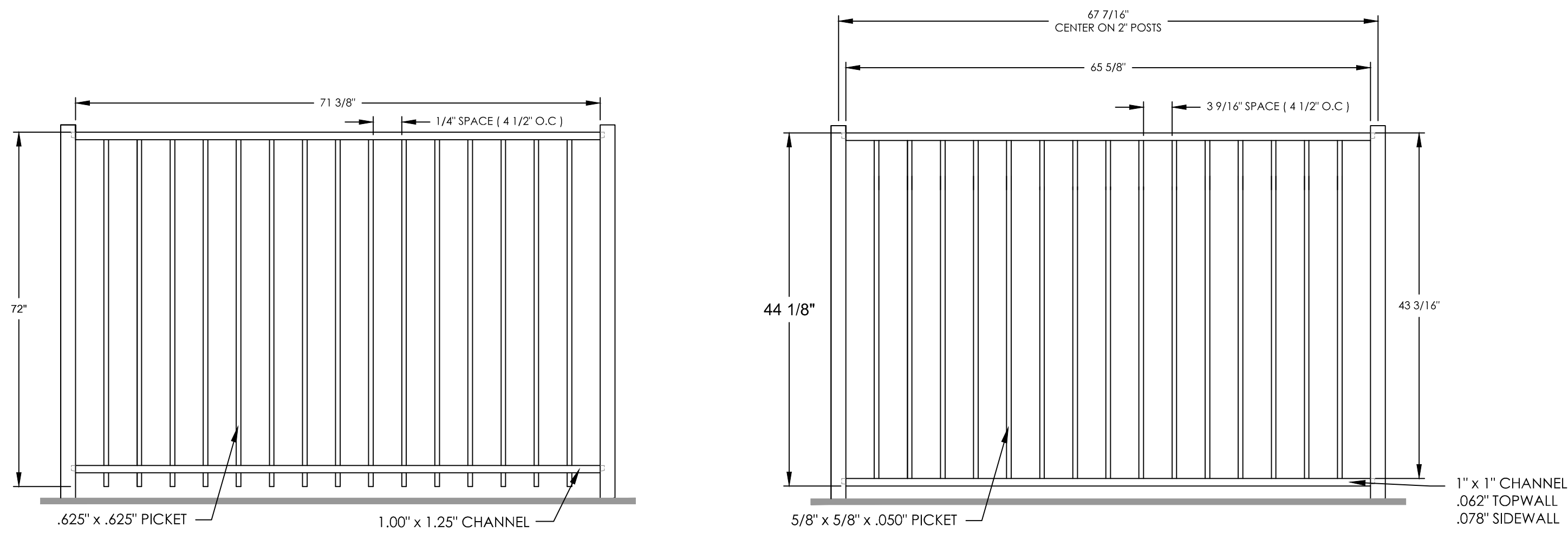
DATE	JULY 2, 2024
SCALE	AS NOTED
JOB NO.	20221063
SHEET	L110



**Typical 4 - Rail Horse Fence**  
N.T.S.  
All visible members Painted Black



**Typical 2 - Rail Horse Fence**  
N.T.S.  
All visible members Painted Black

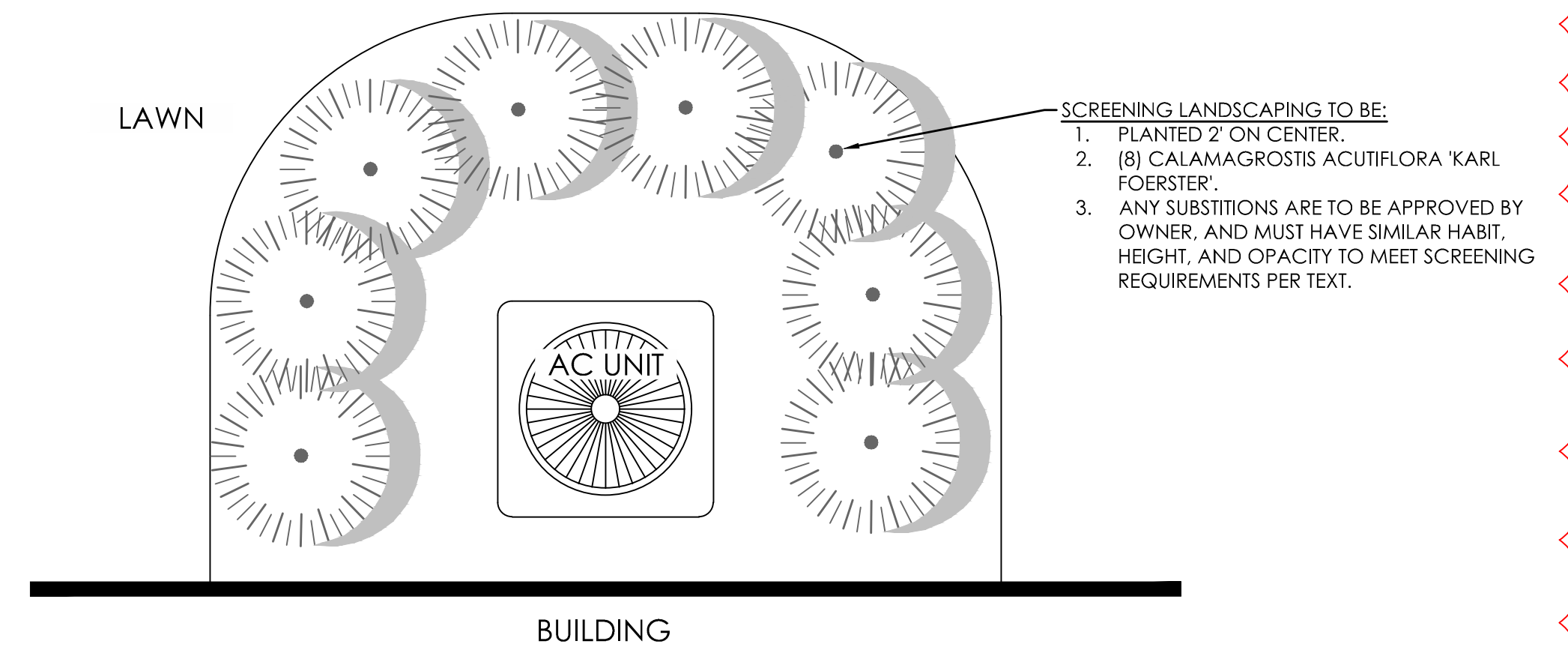


Manufacturer: Alumi-Guard or equal  
Product ID: Residential Ascot 72"  
Finish: Black  
www.alumi-guard.com  
**Decorative Aluminum Fence (For Pool)**  
No Scale

Manufacturer: Alumi-Guard  
Product ID: Residential Ascot 48"  
Finish: Black  
www.alumi-guard.com  
**Decorative Aluminum Fence**  
No Scale



Vinyl Fence (On Rear of Lots)



**AC Screening Detail**  
N.T.S.

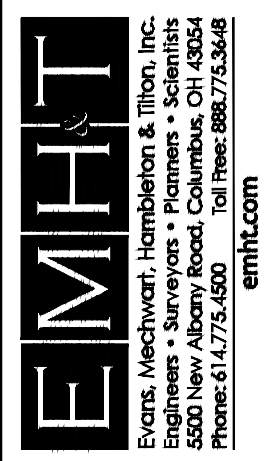
- Notes:**
1. Air conditioning unit screening shall be provided where units are visible to adjacent properties along the eastern and southern property lines.

- SCREENING LANDSCAPING TO BE:**
1. PLANTED 2' ON CENTER.
  2. (B) CALAMAGROSIS ACUTIFLORA 'KARL FOERSTER'.
  3. ANY SUBSTITUTIONS ARE TO BE APPROVED BY OWNER, AND MUST HAVE SIMILAR HABIT, HEIGHT, AND OPACITY TO MEET SCREENING REQUIREMENTS PER TEXT.

DATE	DESCRIPTION
7/2/24	PER FAC LETTER 3/21/2024



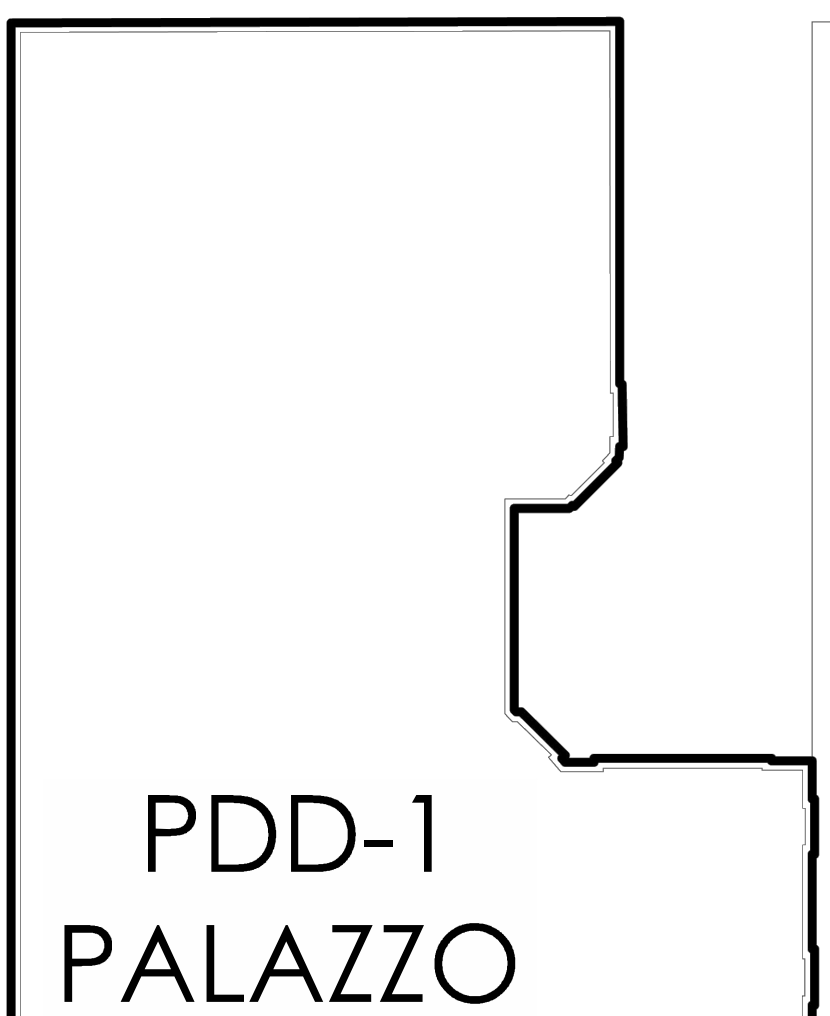
CITY OF NOBLESVILLE, HAMILTON COUNTY, INDIANA  
PD - PLANNED DEVELOPMENT  
FOR  
**THE COURTYARDS OF HAZEL DELL**  
TYPICAL LANDSCAPE DETAILS



DATE	JULY 2, 2024
SCALE	AS NOTED
JOB NO.	20221063
SHEET	L111

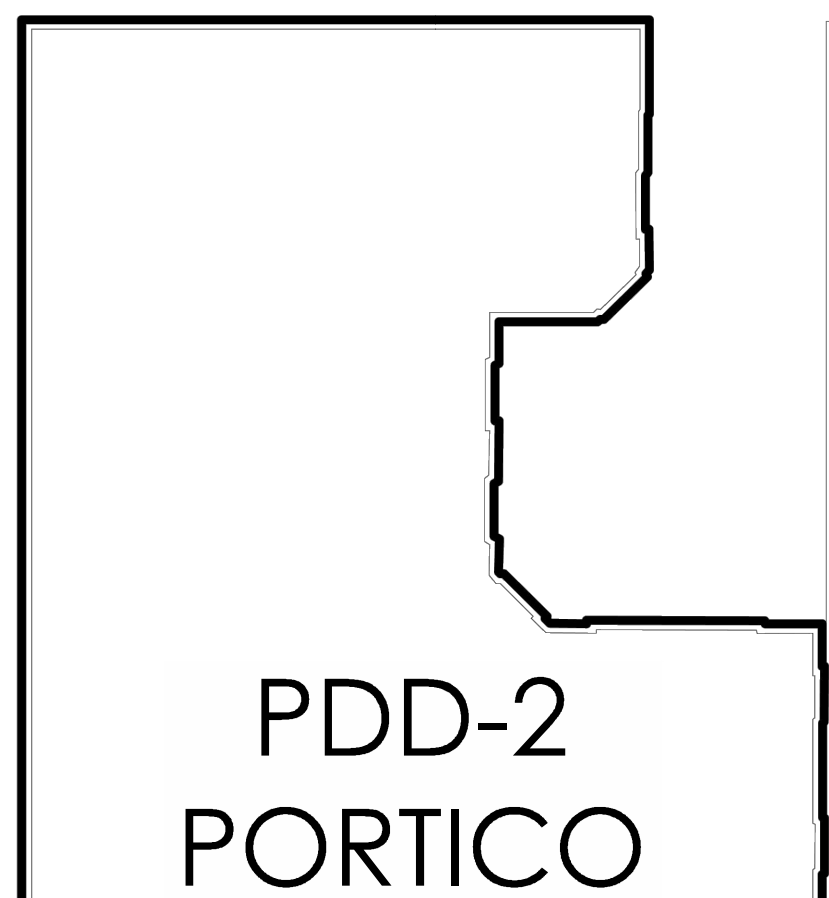
i:\2022\1063\correspondence\ask 7001 holland hazel dell noblesville.in\Draw\04\Sheets\POP\_2024\11 Typical Landscape Details.dwg, Last Saved By: khatt, 7/2/2024, 10:46 AM Last Printed By: Hatt, Kon, 7/2/2024, 11:07 AM  
 xref: 2017166 - 15-REF-B - 2017166 - TBK - 2017166 - XS-1000-F

i:\20221063\correspondence\ask 7001 holland hazel dell noblesville.in\Draw\04Streets\POP\_2024\11 Typical Landscape Details.dwg, Last Saved By: khatt, 7/2/2024 10:46 AM Last Printed By: khatt, Kon, 7/2/2024 11:07 AM  
 Xref: 2017166 - ISREF - 1  
 Xref: 2017166 - TBK - 2017166 - XS - 1000 - F



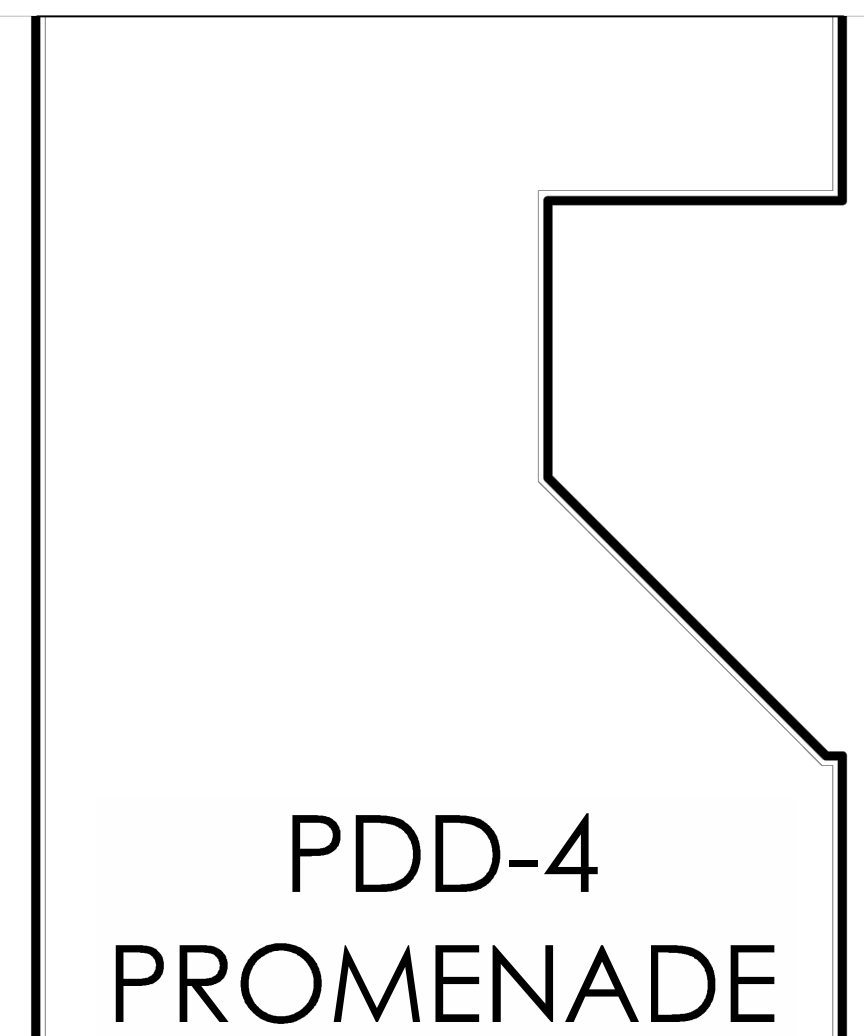
- 1- Medium Deciduous Shrub
- 1 - Medium Evergreen Shrub
- 2 - Small Evergreen Shrub
- 2 - Small Deciduous Shrub
- 1- Medium Deciduous Shrub
- 1- Ornamental Tree
- 3- Medium Evergreen Shrub
- 3 - Ornamental Shrubs

NOTE : Landscape Plans are Conceptual. Species and Quantities May Change Based on Availability.



- 1- Medium Deciduous Shrub
- 3 - Medium Evergreen Shrubs
- 1 - Large Evergreen Shrub
- 2 - Small Evergreen Shrubs
- 3 - Small Deciduous Shrubs
- 1 - Medium Deciduous Shrub
- 1 - Ornamental Tree
- 4 - Perennials

NOTE : Landscape Plans are Conceptual. Species and Quantities May Change Based on Availability.

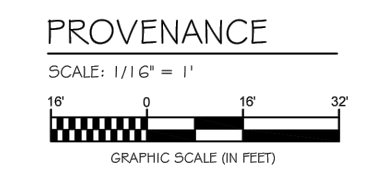
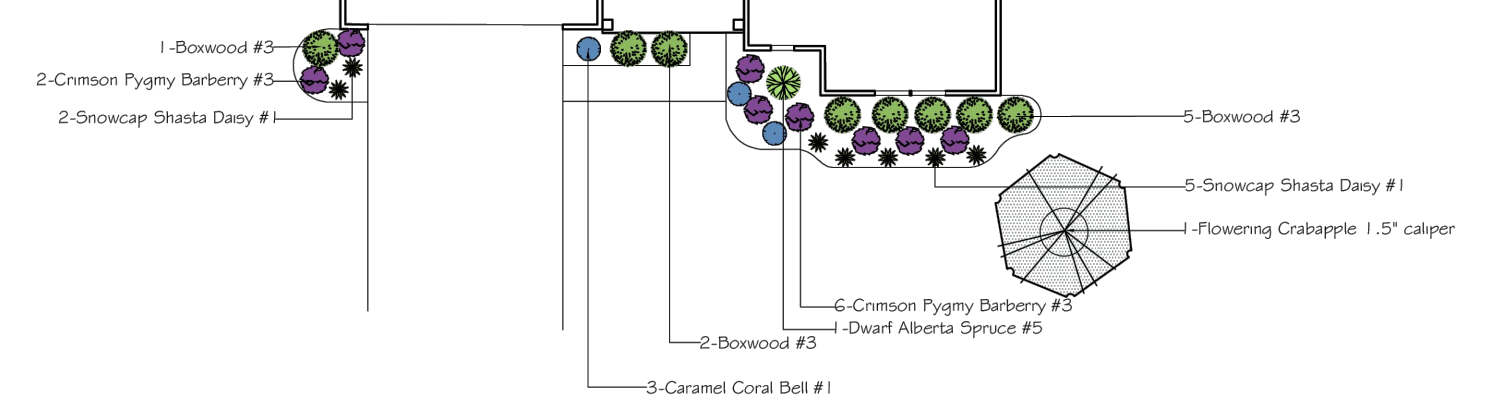


- 1-DWARF BURNING BUSH 30" SP.
- 2-GREEN VELVET BOXWOOD 1 8" SP.
- 1-FERNLEAF BUCKTHORN 24" HT
- 1-KOREAN SPICE VIBURNUM 30" SP.
- 3-BLUE HOLLY 24" SP.
- 1-SWEETBAY MAGNOLIA 6-8" HT.
- 4-HAPPY RETURNS DAYLILY 1 GAL.
- 3-CRIMSON PYGMY BARBERRY 1 8" SP.

NOTE : Landscape Plans are Conceptual. Species and Quantities May Change Based on Availability.

Note:  
 All Plant Materials Shall be  
 Approved Plants per City  
 of Noblesville, Indiana

### E-1 PROVENANCE



**WILSON LANDSCAPE ASSOCIATES**  
 DESIGN / INSTALLATION / RESIDENTIAL / COMMERCIAL  
 900 Buckeye Park Road Columbus OH 43227  
 614.444.8877 Tel. 614.444.1175 Fax  
 www.wilsonlandscape.com

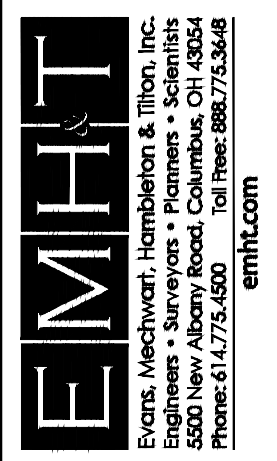
**Landscape Plan for Epcon Communities Provenance Ohio**

Date: 12/9/21  
 Scale: 1" = 1'-0"  
 Drawn By: AS  
 Drawing Number:

DATE	DESCRIPTION
7/2/24	PER FAC LETTER 3/21/2024



CITY OF NOBLESVILLE, HAMILTON COUNTY, INDIANA  
 PD - PLANNED DEVELOPMENT  
 FOR  
**THE COURTYARDS OF HAZEL DELL**  
 TYPICAL HOME LANDSCAPE

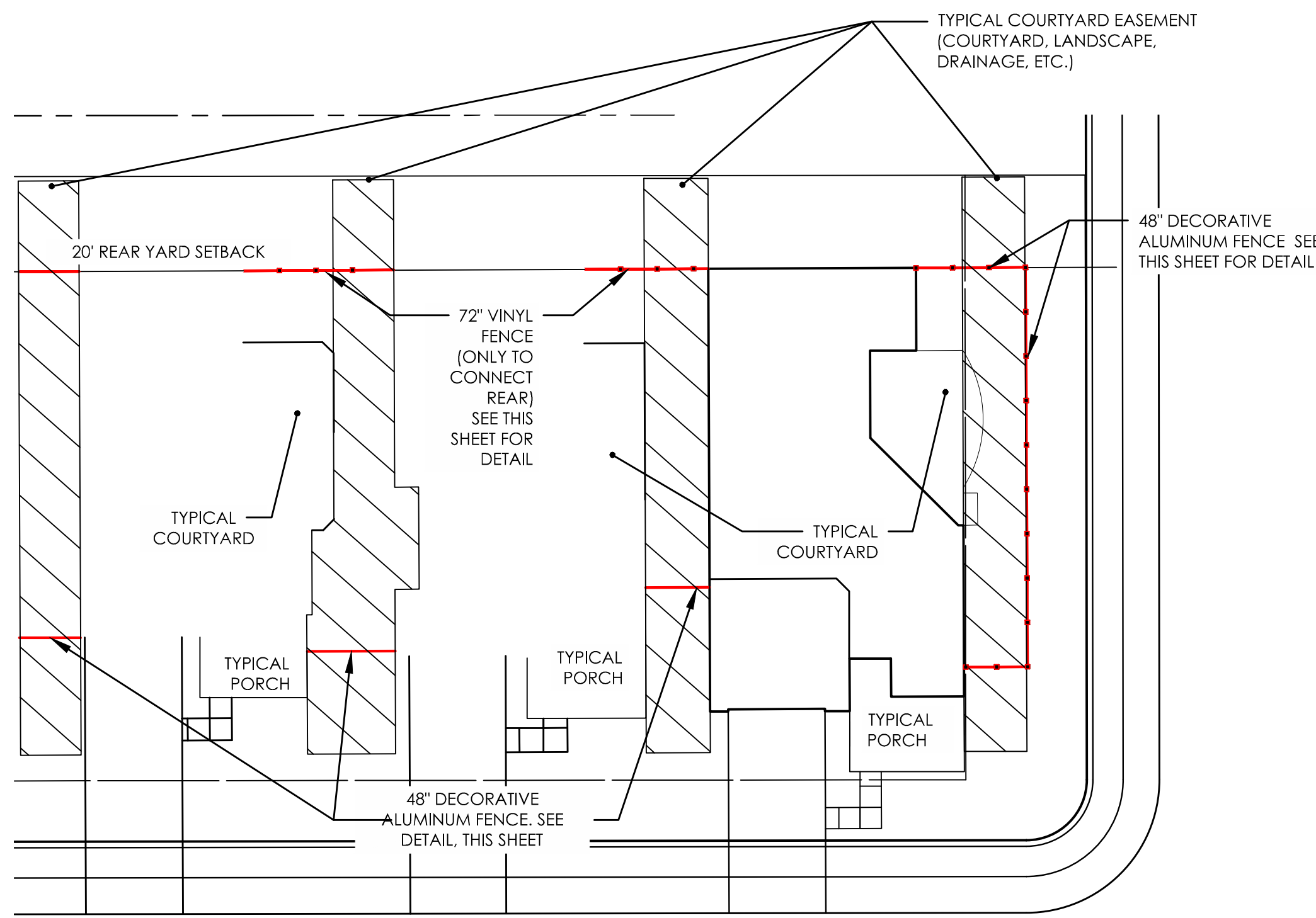


DATE  
 JULY 2, 2024

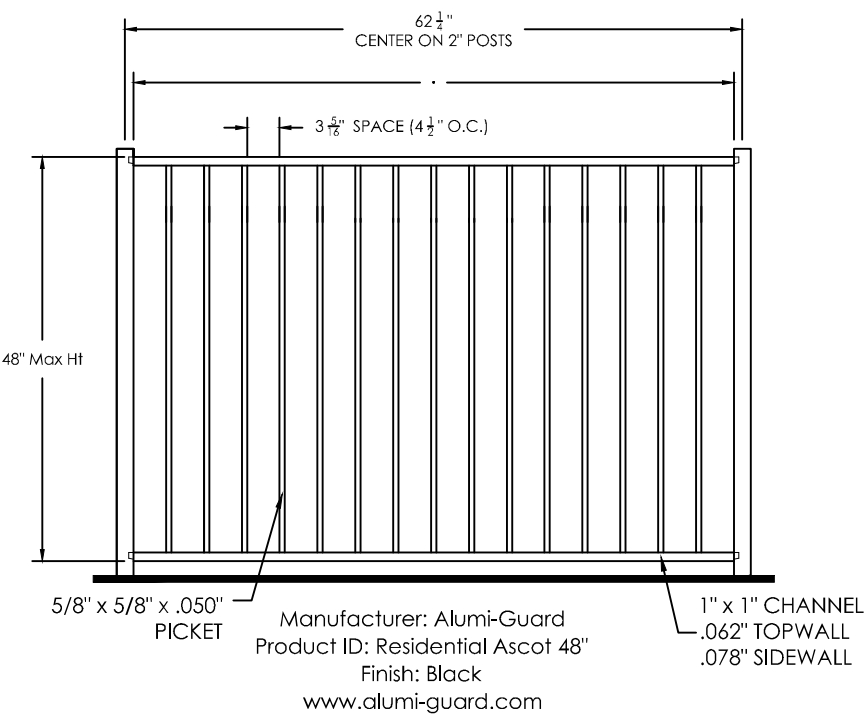
SCALE  
 AS NOTED

JOB NO.  
 20221063

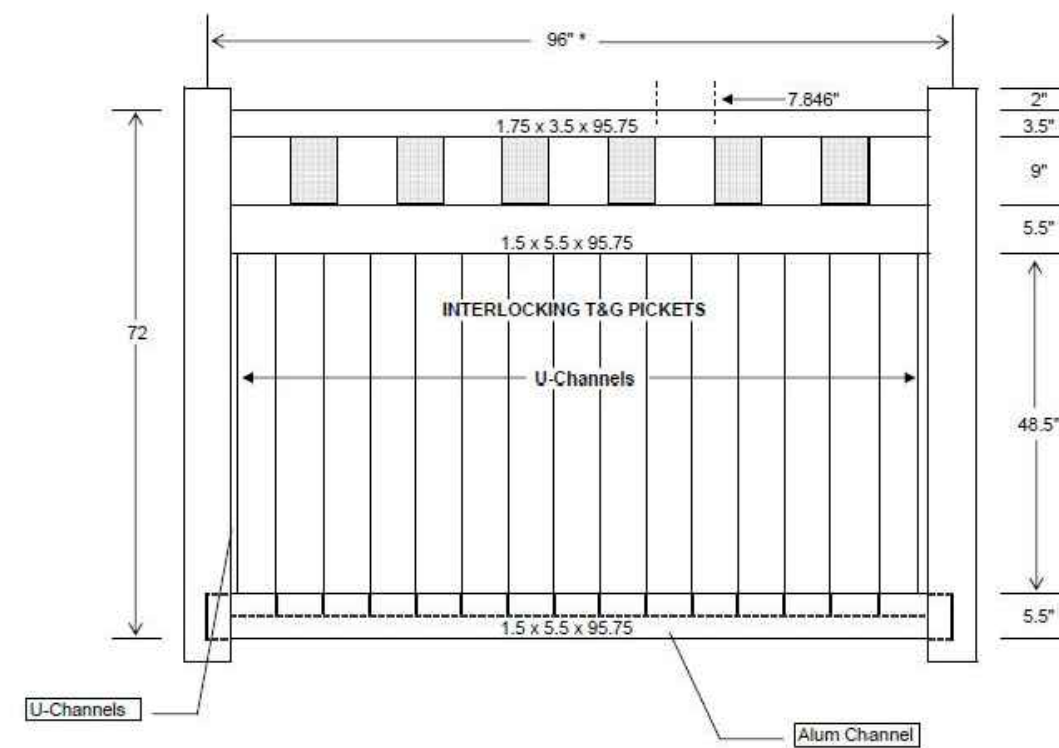
SHEET  
 L112



**PLAN VIEW**  
SCALE: 1" = 20'



**DECORATIVE ALUMINUM FENCE**  
No Scale



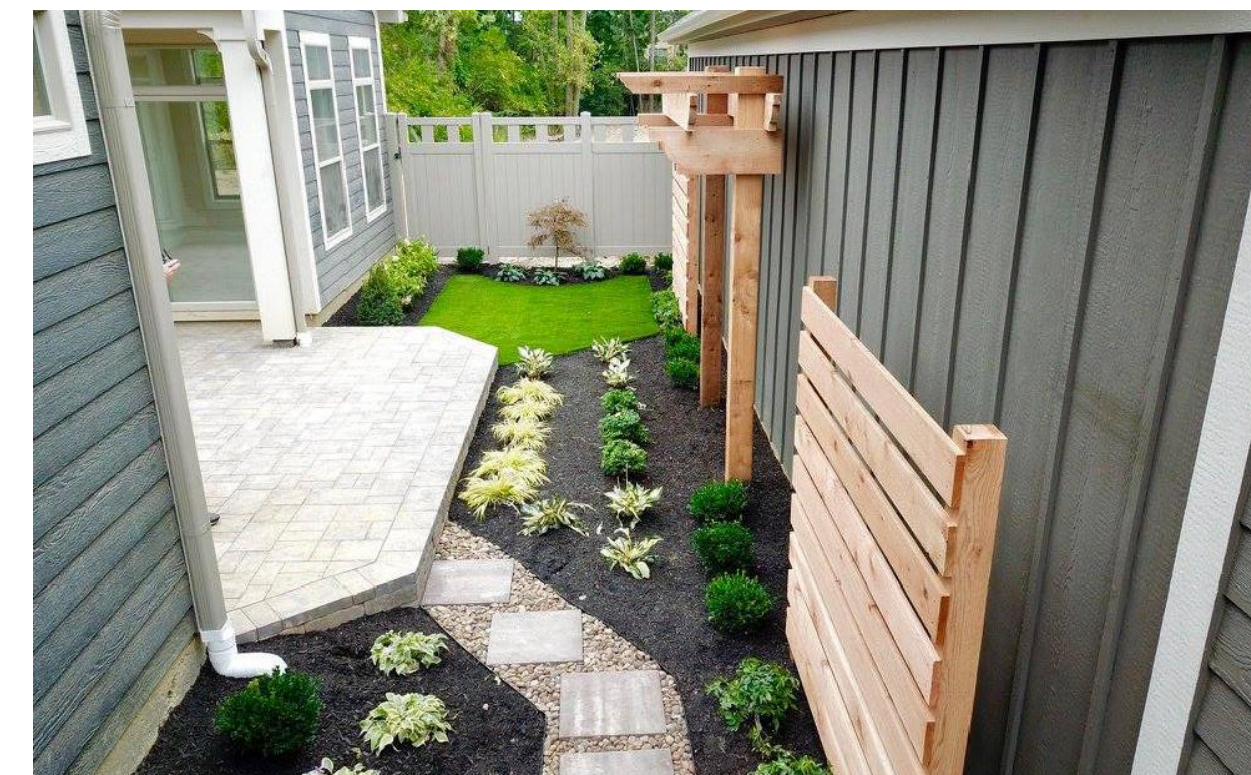
**VINYL FENCE (ON REAR OF HOME)**  
No Scale



**TYPICAL COURTYARD**



**TYPICAL COURTYARD**



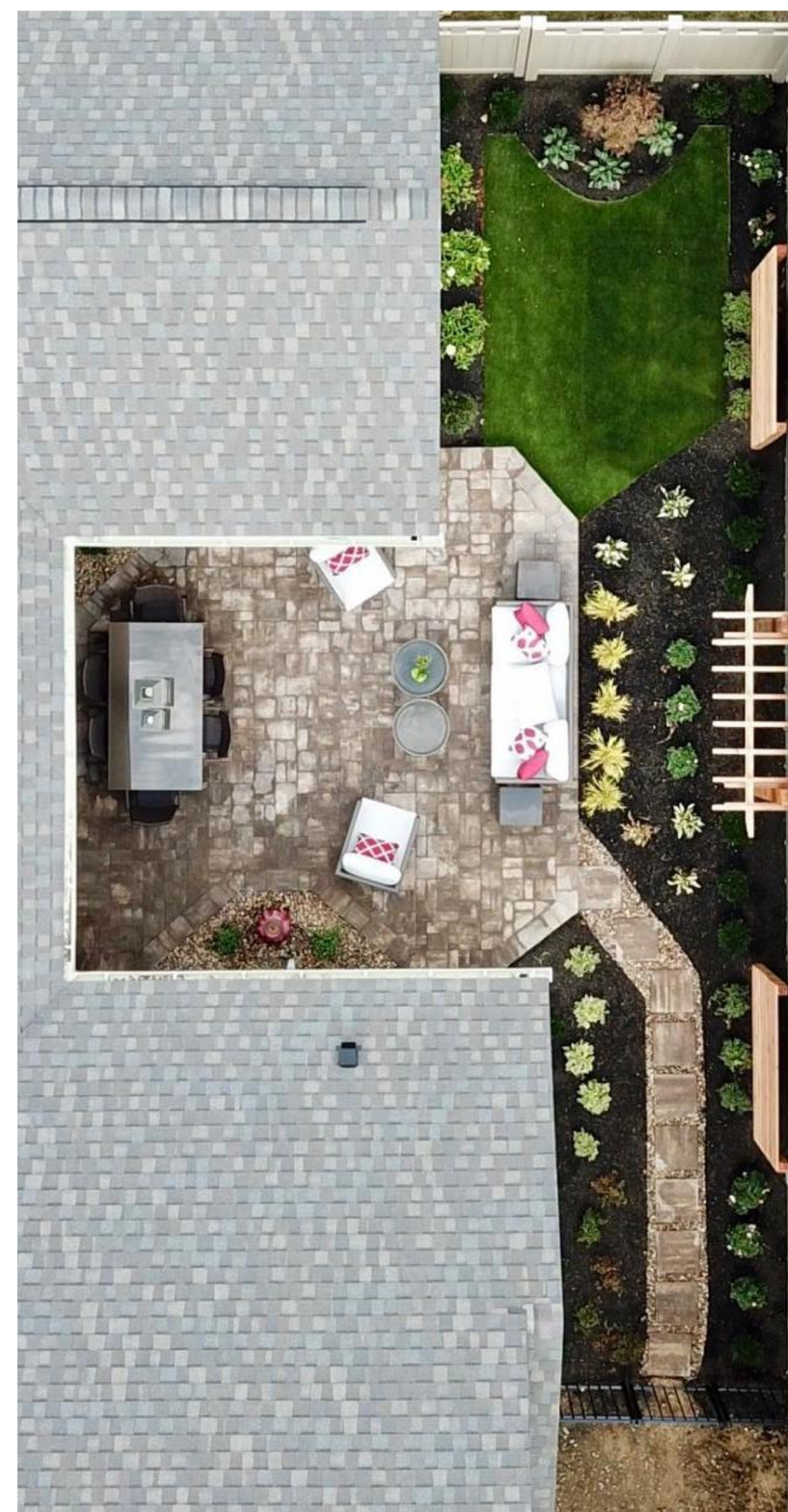
**TYPICAL COURTYARD**



**TYPICAL COURTYARD**



**AERIAL VIEW : TYPICAL COURTYARDS**



**TYPICAL COURTYARD**



**TYPICAL COURTYARD**



**TYPICAL COURTYARD**



**TYPICAL COURTYARD ADJACENT TO STREET**



**TYPICAL COURTYARD ADJACENT TO OPEN SPACE**

DATE	DESCRIPTION
7/2/24	PER FAC LETTER 3/27/2024

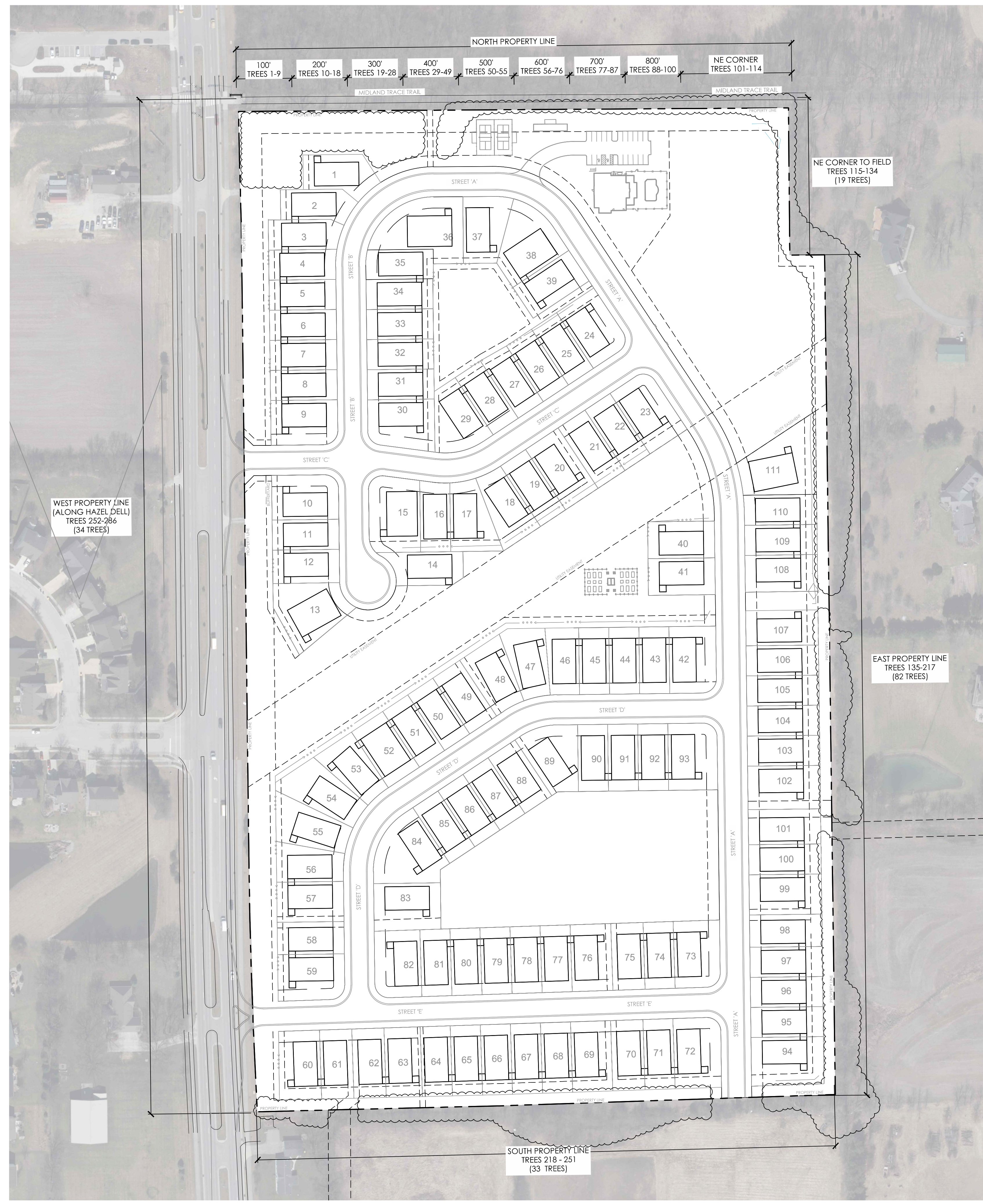


CITY OF NOBLESVILLE, HAMILTON COUNTY, INDIANA  
PD - PLANNED DEVELOPMENT  
FOR  
**THE COURTYARDS OF HAZEL DELL**  
COURTYARD CONCEPTS



DATE	JULY 2, 2024
SCALE	AS NOTED
JOB NO.	20221063
SHEET	L113

P:\20221063\correspondence\ask 7001 holland hazel dell noblesville in\dwg\04\Sheets\POP 2024\13 Home Landscape Concepts.dwg, Last Saved By: khiett, 5/23/2024, 6:08 PM, Last Printed By: khiett, 7/2/2024, 11:07 AM, No Xref(s)



### TREE SURVEY SUMMARY

TOTAL TREES INVENTORIED - 286 TREES

NUMBER OF SPECIES - 22 SPECIES

NUMBER OF TREES IN POOR OR DEAD CONDITION - 72 TREES

POOR AND DEAD TREES ARE NOT COUNTED TOWARDS THE BUFFER TREE REQUIREMENT.

POOR AND DEAD TREES ARE MARKED RED - SEE ATTACHED SPREADSHEET THIS SHEET

TREE SURVEY INVENTORY PROVIDED BY JUD SCOTT, CONSULTING ARBORIST. SEE REPORT DATED APRIL 5, 2024

#	Species	Scientific Name	Size	Condition
1	Mulberry, White	Morus alba	8	Fair
2	Elm, Red	Ulmus rubra	6	Fair
3	Elm, Red	Ulmus rubra	6	Fair
4	Hackberry, Eastern	Celtis occidentalis	10	Fair
5	Walnut, Black	Juglans nigra	10	Fair
6	Hackberry, Eastern	Celtis occidentalis	5	Good
7	Mulberry, White	Morus alba	5	Fair
8	Mulberry, White	Morus alba	10	Fair
9	Walnut, Black	Juglans nigra	6	Good
10	Hackberry, Eastern	Celtis occidentalis	11	Fair
11	Walnut, Black	Juglans nigra	42	Fair
12	Hackberry, Eastern	Celtis occidentalis	7	Fair
13	Hackberry, Eastern	Celtis occidentalis	10	Fair
14	Mulberry, White	Morus alba	10	Fair
15	Walnut, Black	Juglans nigra	2	Good
16	Walnut, Black	Juglans nigra	2	Good
17	Walnut, Black	Juglans nigra	5	Good
18	Walnut, Black	Juglans nigra	20	Fair
19	Mulberry, White	Morus alba	11	Fair
20	Buckeye, Ohio	Aesculus glabra	8	Fair
21	Buckeye, Ohio	Aesculus glabra	8	Fair
22	Buckeye, Ohio	Aesculus glabra	14	Fair
23	Walnut, Black	Juglans nigra	12	Good
24	Walnut, Black	Juglans nigra	11	Fair
25	Mulberry, White	Morus alba	5	Fair
26	Hackberry, Eastern	Celtis occidentalis	6	Fair
27	Walnut, Black	Juglans nigra	12	Fair
28	Walnut, Black	Juglans nigra	12	Fair
29	Elm, American	Ulmus americana	11	Fair
30	Walnut, Black	Juglans nigra	13	Fair
31	Walnut, Black	Juglans nigra	6	Fair
32	Hackberry, Eastern	Celtis occidentalis	11	Fair
33	Walnut, Black	Juglans nigra	10	Fair
34	Hackberry, Eastern	Celtis occidentalis	6	Fair
35	Cherry, Black	Prunus serotina	15	Good
36	Mulberry, White	Morus alba	14	Fair
37	Mulberry, White	Morus alba	2	Fair
38	Cherry, Black	Prunus serotina	32	Fair
39	Hackberry, Eastern	Celtis occidentalis	12	Fair
40	Hackberry, Eastern	Celtis occidentalis	14	Fair
41	Mulberry, White	Morus alba	9	Fair
42	Mulberry, White	Morus alba	9	Fair
43	Mulberry, White	Morus alba	5	Fair
44	Mulberry, White	Morus alba	6	Fair
45	Maple, Silver	Acer saccharinum	7	Fair
46	Maple, Silver	Acer saccharinum	10	Fair
47	Mulberry, White	Morus alba	9	Fair
48	Cherry, Black	Prunus serotina	17	Fair
49	Maple, Silver	Acer saccharinum	5	Fair
50	Maple, Silver	Acer saccharinum	9	Fair
51	Mulberry, White	Morus alba	4	Fair
52	Buckeye, Ohio	Aesculus glabra	12	Fair
53	Buckeye, Ohio	Aesculus glabra	7	Fair
54	Ash, White	Fraxinus americana	48	Dead
55	Mulberry, White	Morus alba	12	Fair
56	Mulberry, White	Morus alba	9	Fair
57	Cherry, Black	Prunus serotina	18	Fair
58	Mulberry, White	Morus alba	14	Fair
59	Mulberry, White	Morus alba	14	Fair
60	Cherry, Black	Prunus serotina	16	Fair
61	Mulberry, White	Morus alba	5	Fair
62	Maple, Silver	Acer saccharinum	24	Fair
63	Cherry, Black	Prunus serotina	32	Fair
64	Hackberry, Eastern	Celtis occidentalis	21	Fair
65	Hackberry, Eastern	Celtis occidentalis	12	Fair
66	Elm, American	Ulmus americana	7	Fair
67	Walnut, Black	Juglans nigra	17	Good
68	Hackberry, Eastern	Celtis occidentalis	5	Good
69	Cherry, Black	Prunus serotina	12	Dead
70	Cherry, Black	Prunus serotina	18	Fair
71	Cherry, Black	Prunus serotina	12	Dead
72	Cherry, Black	Prunus serotina	11	Dead
73	Hackberry, Eastern	Celtis occidentalis	14	Good
74	Buckeye, Ohio	Aesculus glabra	6	Good
75	Buckeye, Ohio	Aesculus glabra	6	Good
76	Walnut, Black	Juglans nigra	6	Good
77	Hackberry, Eastern	Celtis occidentalis	6	Fair
78	Hackberry, Eastern	Celtis occidentalis	4	Fair
79	Hackberry, Eastern	Celtis occidentalis	4	Good
80	Walnut, Black	Juglans nigra	13	Fair
81	Hackberry, Eastern	Celtis occidentalis	5	Fair
82	Mulberry, White	Morus alba	5	Fair
83	Mulberry, White	Morus alba	9	Fair
84	Hackberry, Eastern	Celtis occidentalis	7	Good
85	Maple, Silver	Acer saccharinum	46	Fair
86	Mulberry, White	Morus alba	7	Fair
87	Cherry, Black	Prunus serotina	18	Fair
88	Hackberry, Eastern	Celtis occidentalis	16	Fair
89	Maple, Silver	Acer saccharinum	16	Fair
90	Hackberry, Eastern	Celtis occidentalis	11	Good
91	Maple, Sugar	Acer saccharum	15	Fair
92	Maple, Sugar	Acer saccharum	15	Fair
93	Cherry, Black	Prunus serotina	12	Good
94	Maple, Silver	Acer saccharinum	17	Fair
95	Maple, Silver	Acer saccharinum	22	Fair
96	Maple, Silver	Acer saccharinum	9	Fair
97	Maple, Silver	Acer saccharinum	12	Fair
98	Maple, Silver	Acer saccharinum	21	Fair
99	Maple, Silver	Acer saccharinum	18	Fair
100	Buckeye, Ohio	Aesculus glabra	14	Fair
101	Buckeye, Ohio	Aesculus glabra	18	Fair
102	Elm, Red	Ulmus rubra	10	Fair
103	Maple, Silver	Acer saccharinum	13	Fair
104	Maple, Silver	Acer saccharinum	11	Fair
105	Maple, Silver	Acer saccharinum	18	Fair
106	Maple, Silver	Acer saccharinum	18	Fair
107	Maple, Silver	Acer saccharinum	5	Fair
108	Maple, Silver	Acer saccharinum	11	Fair
109	Maple, Silver	Acer saccharinum	24	Fair
110	Maple, Silver	Acer saccharinum	22	Fair
111	Elm, Red	Ulmus rubra	26	Fair
112	Elm, Red	Ulmus rubra	7	Good
113	Maple, Silver	Acer saccharinum	34	Fair
114	Elm, American	Ulmus americana	51	Fair
115	Elm, American	Ulmus americana	11	Fair
116	Elm, American	Ulmus americana	5	Fair
117	Mulberry, White	Morus alba	12	Fair
118	Hackberry, Eastern	Celtis occidentalis	5	Fair
119	Buckeye, Ohio	Aesculus glabra	5	Good
120	Maple, Sugar	Acer saccharum	16	Good
121	Elm, Red	Ulmus rubra	6	Fair
122	Elm, Red	Ulmus rubra	6	Fair
123	Maple, Sugar	Acer saccharum	6	Good
124	Hackberry, Eastern	Celtis occidentalis	5	Fair
125	Hackberry, Eastern	Celtis occidentalis	4	Fair
126	Hackberry, Eastern	Celtis occidentalis	6	Good
127	Hackberry, Eastern	Celtis occidentalis	8	Good
128	Hackberry, Eastern	Celtis occidentalis	16	Good
129	Maple, Sugar	Acer saccharum	5	Good
130	Cherry, Black	Prunus serotina	8	Fair
131	Hackberry, Eastern	Celtis occidentalis	14	Fair
132	Hackberry, Eastern	Celtis occidentalis	11	Fair
133	Hackberry, Eastern	Celtis occidentalis	42	Dead
134	Ash, White	Fraxinus americana	9	Fair
135	Box Elder	Acer negundo	8	Fair
136	Box Elder	Acer negundo	8	Fair
137	Cherry, Black	Prunus serotina	7	Fair
138	Mulberry, White	Morus alba	6	Fair
139	Maple, Silver	Acer saccharinum	6	Fair
140	Mulberry, White	Morus alba	4	Fair
141	Cherry, Black	Prunus serotina	7	Fair
142	Maple, Sugar	Acer saccharum	9	Good
143	Box Elder	Acer negundo	8	Fair
144	Box Elder	Acer negundo	11	Fair
145	Mulberry, White	Morus alba	8	Fair
146	Hackberry, Eastern	Celtis occidentalis	5	Fair
147	Maple, Silver	Acer saccharinum	6	Fair
148	Maple, Red	Acer rubrum	10	Fair
149	Maple, Silver	Acer saccharinum	7	Fair
150	Maple, Silver	Acer saccharinum	6	Fair
151	Maple, Silver	Acer saccharinum	6	Good
152	Maple, Silver	Acer saccharinum	12	Fair
153	Mulberry, White	Morus alba	11	Good
154	Maple, Silver	Acer saccharinum	7	Fair
155	Maple, Silver	Acer saccharinum	9	Fair
156	Maple, Silver	Acer saccharinum	42	Fair
157	Maple, Silver	Acer saccharinum	46	Fair
158	Maple, Silver	Acer saccharinum	6	Fair
159	Maple, Silver	Acer saccharinum	7	Fair
160	Maple, Silver	Acer saccharinum	8	Fair
161	Maple, Silver	Acer saccharinum	7	Fair
162	Maple, Silver	Acer saccharinum	8	Fair
163	Box Elder	Acer negundo	14	Fair
164	Cherry, Black	Prunus serotina	11	Fair
165	Box Elder	Acer negundo	8	Fair
166	Oak, Pin	Quercus palustris	13	Good
167	Box Elder	Acer negundo	7	Fair
168	Box Elder	Acer negundo	9	Fair
169	Box Elder	Acer negundo	11	Fair
170	Box Elder	Acer negundo	11	Fair
171	Mulberry, White	Morus alba	6	Fair
172	Mulberry, White	Morus alba	5	Fair
173	Hackberry, Eastern	Celtis occidentalis	5	Fair
174	Hackberry, Eastern	Celtis occidentalis	5	Fair
175	Box Elder	Acer negundo	9	Fair
176	Mulberry, White	Morus alba	9	Fair
177	Maple, Silver	Morus alba	7	Fair
178	Cherry, Eastern Red	Juniperus virginiana	6	Fair
179	Hackberry, Eastern	Celtis occidentalis	16	Good
180	Box Elder	Acer negundo	12	Fair
181	Maple, Silver	Morus alba	5	Fair
182	Cherry, Black	Prunus serotina	5	Fair
183	Mulberry, White	Morus alba	5	Fair
184	Mulberry, White	Morus alba	4	Fair
185	Mulberry, White	Morus alba	4	Fair
186	Mulberry, White	Morus alba	4	Fair
187	Cherry, Black	Prunus serotina	9	Fair
188	Maple, Silver	Morus alba	6	Fair
189	Mulberry, White	Morus alba	10	Fair
190	Hackberry, Eastern	Celtis occidentalis	16	Good
191	Hackberry, Eastern	Celtis occidentalis	8	Good
192	Hackberry, Eastern	Celtis occidentalis	10	Fair
193	Hackberry, Eastern	Celtis occidentalis	21	Fair
194	Hackberry, Eastern	Celtis occidentalis	14	Good
195	Hackberry, Eastern	Celtis occidentalis	10	Fair
196	Maple, Silver	Morus alba	14	Fair
197	Hackberry, Eastern	Celtis occidentalis	11	Fair
198	Hackberry, Eastern	Celtis occidentalis	7	Fair
199	Hackberry, Eastern	Celtis occidentalis	9	Fair
200	Hackberry, Eastern	Celtis occidentalis	8	Fair
201	Hackberry, Eastern	Celtis occidentalis	9	Fair
202	Hackberry, Eastern	Celtis occidentalis	9	Fair
203	Hackberry, Eastern	Celtis occidentalis	9	Fair
204	Cedar, Eastern Red	Juniperus virginiana	8	Fair
205	Hackberry, Eastern	Celtis occidentalis	14	Good
206	Hackberry, Eastern	Celtis occidentalis	10	Good
207	Hackberry, Eastern	Celtis occidentalis	9	Fair
208	Hackberry, Eastern	Celtis occidentalis	13	Fair
209	Ash, White	Fraxinus americana	11	Fair
210	Hackberry, Eastern	Celtis occidentalis	12	Good
211	Hackberry, Eastern	Celtis occidentalis	12	Good
212	Hackberry, Eastern	Celtis occidentalis	4	Good
213	Oak, Pin	Quercus palustris	5	Good
214	Hackberry, Eastern	Celtis occidentalis	12	Fair
215	Hackberry, Eastern	Celtis occidentalis	13	Fair
216	Hackberry, Eastern	Celtis occidentalis	18	Fair
217	Mulberry, White	Morus alba	20	Fair
218	Cedar, Northern	Thuja occidentalis	8	Good
219	Maple, Silver	Acer saccharinum	7	Fair
220	Maple, Silver	Acer saccharinum	26	Fair
221	Maple, Silver	Acer saccharinum	5	Fair
222	Maple, Silver	Acer saccharinum	5	Fair
223	Maple, Silver	Acer saccharinum	7	Fair
224	Maple, Silver	Acer saccharinum	6	Fair
225	Maple, Silver	Acer saccharinum	5	Fair
226	Maple, Silver	Acer saccharinum	8	Fair
227	Maple, Silver	Acer saccharinum	14	Fair
228	Maple, Silver	Acer saccharinum	14	Fair
229	Maple, Silver	Acer saccharinum	6	Fair
230	Maple, Silver	Acer saccharinum	5	Fair
231	Maple, Silver	Acer saccharinum	5	Fair
232	Maple, Silver	Acer saccharinum	6	Fair
233	Maple, Silver	Acer saccharinum	5	Fair
234	Maple, Silver	Acer saccharinum	6	Fair
235	Maple, Silver	Acer saccharinum	6	Fair
236	Maple, Silver	Acer saccharinum	6	Fair
237	Maple, Silver	Acer saccharinum	7	Fair
238	Maple, Silver	Acer saccharinum	5	Fair
239	Maple, Silver	Acer saccharinum	5	Fair
240	Mulberry, White	Morus alba	10	Fair
241	Hackberry, Eastern	Celtis occidentalis	12	Fair
242	Hackberry, Eastern	Celtis occidentalis	12	Fair
243	Oak, Pin	Quercus palustris	5	Good
244	Maple, Silver	Acer saccharinum	5	Good
245	Cedar, Eastern Red	Juniperus virginiana	7	Fair
246	Cedar, Eastern Red	Juniperus virginiana	5	Fair
247	Hackberry, Eastern	Celtis occidentalis	9	Good
248	Hackberry, Eastern	Celtis occidentalis	7	Fair
249	Mulberry, White	Morus alba	12	Fair
250	Cherry, Black	Prunus serotina	6	Fair
251	Hackberry, Eastern	Celtis occidentalis	11	Fair
252	Senecio, Yellow	Ameiobach canadensis	6	Good
253	Senecio, Yellow	Ameiobach canadensis	7	Fair
254	Senecio, Yellow	Ameiobach canadensis	7	Good
255	Senecio, Yellow	Ameiobach canadensis	9	Good
256	Senecio, Yellow	Ameiobach canadensis	10	Good
257	Maple, Red	Acer rubrum	6	Fair
258	Pine, Austrian	Pinus nigra	8	Fair
259	Pine, Austrian	Pinus nigra	7	Fair
260	Pine, Austrian	Pinus nigra	8	Fair
261	Pine, Austrian	Pinus nigra	6	Fair
262	Pine, Austrian	Pinus nigra	10	Fair
263	Pine, Austrian	Pinus nigra	12	Fair
264	Spice, Colorado	Picea pungens	5	Fair
265	Senecio, Yellow	Ameiobach canadensis	7	Fair
266	Senecio, Yellow	Ameiobach canadensis	6	Fair
267	Senecio, Yellow	Ameiobach canadensis	8	Fair
268	Pine, Austrian	Pinus nigra	11	Fair
269	Pine, Austrian	Pinus nigra	9	Fair
270	Tulip	Lindodendron tulipifera	9	Good
271	Spice, Norway	Picea abies	5	Fair
272	Walnut, Black	Juglans nigra	28	Fair
273	Mulberry, White	Morus alba	8	Fair
274	Mulberry, White	Morus alba	10	Fair
275	Walnut, Black			