

STATE ROAD 32
VARIABLE WIDTH PUBLIC
RIGHT-OF-WAY

PAVING LEGEND

	STANDARD DUTY ASPHALT PAVEMENT SEE CONSTRUCTION DETAILS FOR PAVEMENT SECTION
	HEAVY DUTY ASPHALT PAVEMENT SEE CONSTRUCTION DETAILS FOR PAVEMENT SECTION
	CONCRETE SIDEWALK SEE CONSTRUCTION DETAILS FOR PAVEMENT SECTION
	HEAVY DUTY CONCRETE PAVEMENT SEE CONSTRUCTION DETAILS FOR PAVEMENT SECTION
	ASPHALT TRAIL SEE CONSTRUCTION DETAILS FOR PAVEMENT SECTION

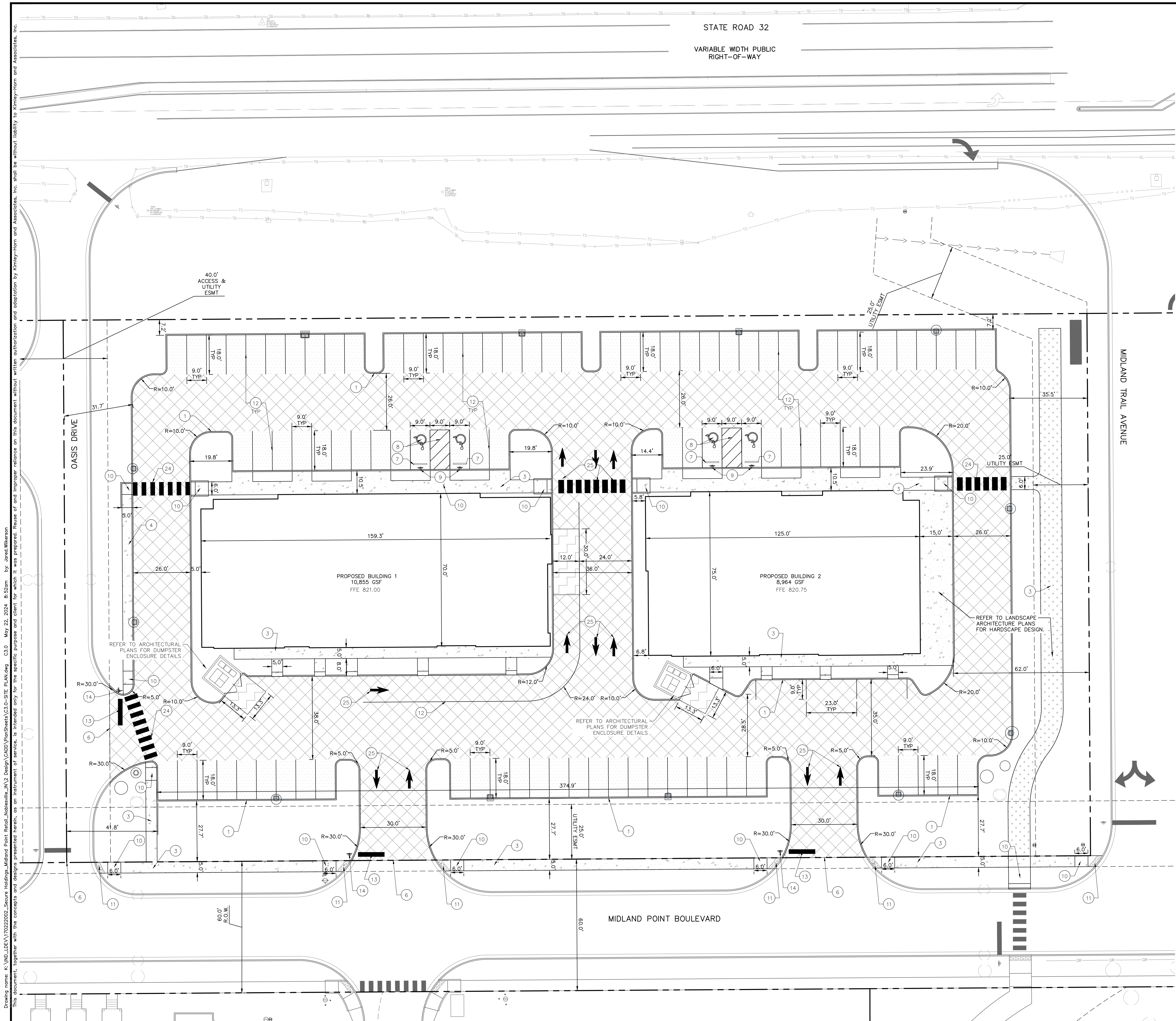
SITE SUMMARY

SITE ZONING	=	PUD
SITE ACREAGE	=	2.65 AC.±
BUILDING 1 AREA	=	10,855 SF
BUILDING 1 HEIGHT	=	X' FT
BUILDING 2 AREA	=	8,964 SF
BUILDING 2 HEIGHT	=	X' FT
PARKING SPACES (STANDARD) REQUIRED	=	80 SPACES
PARKING SPACES (ACCESSIBLE) REQUIRED	=	4 SPACES
PARKING SPACES (STANDARD) PROVIDED	=	92 SPACES
PARKING SPACES (ACCESSIBLE) PROVIDED	=	4 SPACES
TOTAL PARKING SPACES PROVIDED	=	96 SPACES

- ### KEY NOTES
- CONCRETE CURB, TYP. (SEE DETAILS)
 - DEPRESSED CONCRETE CURB AND GUTTER (SEE DETAILS)
 - CONCRETE SIDEWALK, TYP. (SEE DETAILS)
 - COMBINED CURB AND WALK (SEE DETAIL) (5' FROM FACE OF CURB)
 - CONCRETE CURB AND GUTTER (SEE DETAILS)
 - CONNECT TO EXISTING PAVEMENT, SIDEWALK, CURB, TYP.
 - CONCRETE PARKING BUMPER TYP. (SEE DETAILS)
 - ACCESSIBLE PAVEMENT MARKINGS, TYP. (SEE DETAILS)
 - ACCESSIBLE PARKING SIGN, TYP. (SEE PLAN FOR VAN LOCATION) (MUTCD R7-8, SEE DETAILS)
 - ACCESSIBLE RAMP (SEE DETAILS)
 - 2' WIDE TACTILE WARNING STRIP
 - 4" WIDE PAVEMENT MARKING, WHITE SOLID LINE, TYP.
 - 24" WIDE STOP BAR, TYP. (SEE DETAILS)
 - STOP SIGN, TYP. (MUTCD R1-1, SEE DETAILS)
 - CONCRETE BOLLARD, TYP. (SEE DETAILS)
 - TRASH COMPACTOR AND ENCLOSURE (SEE ARCHITECTURAL PLANS FOR DETAILS)
 - TRANSFORMER PAD (REFER TO UTILITY PROVIDER)
 - MONUMENT SIGN (SEE ARCHITECTURAL PLANS FOR DETAILS)
 - LIGHT POLES SHOWN FOR COORDINATION ONLY (SEE SITE LIGHTING PLAN)
 - BIKE RACK (SEE LANDSCAPE PLAN FOR DETAILS)
 - RETAINING WALL (SEE ARCHITECTURAL PLANS FOR DETAILS)
 - 2' CURB TURNOUT (SEE DETAILS)
 - 3'-FT TRANSITION CURB (SEE DETAILS)
 - CROSSWALK
 - TRAFFIC FLOW MARKINGS (SEE DETAILS)

GENERAL PLAN NOTES

REFER TO GENERAL NOTES SHEET FOR MORE INFORMATION INCLUDING THE FOLLOWING: (EXISTING LEGEND, BENCHMARK INFORMATION, AND SPECIFIC GENERAL PLAN NOTES.)



Drawing name: K:\IND_DEV\170222002\Secure Holdings_Midland Point Retail\Noblesville_IN2 Design\CADD\PlanSheets\C3.0-SITE PLAN.dwg C3.0 May 22, 2024 8:52am by: Jared Wilson
 This document, together with the concepts and designs presented herein, is intended only for the specific purpose and client for which it was prepared. Reuse of and improper reliance on this document without written authorization and adaptation by Kimley-Horn and Associates, Inc. shall be without liability to Kimley-Horn and Associates, Inc.

AS NOTED DESIGNED BY: JMS DRAWN BY: VG CHECKED BY: JLW	SCALE: 1" = 40'	SECURE HOLDINGS, LLC 9000 Keystone Crossing, Ste 660 Indianapolis, IN 46240	JARED L. WILKINS REGISTERED PROFESSIONAL ENGINEER No. 170222002	REVISIONS NO. DATE BY
---	--------------------	---	---	--------------------------

SITE PLAN

**MIDLAND POINTE
RETAIL**
 SEC SR32 HAZEL DELL RD.
 NOBLESVILLE, IN 46062

ORIGINAL ISSUE:
 02/21/2024
 KHA PROJECT NO.
 170222002
 SHEET NUMBER
C3.0