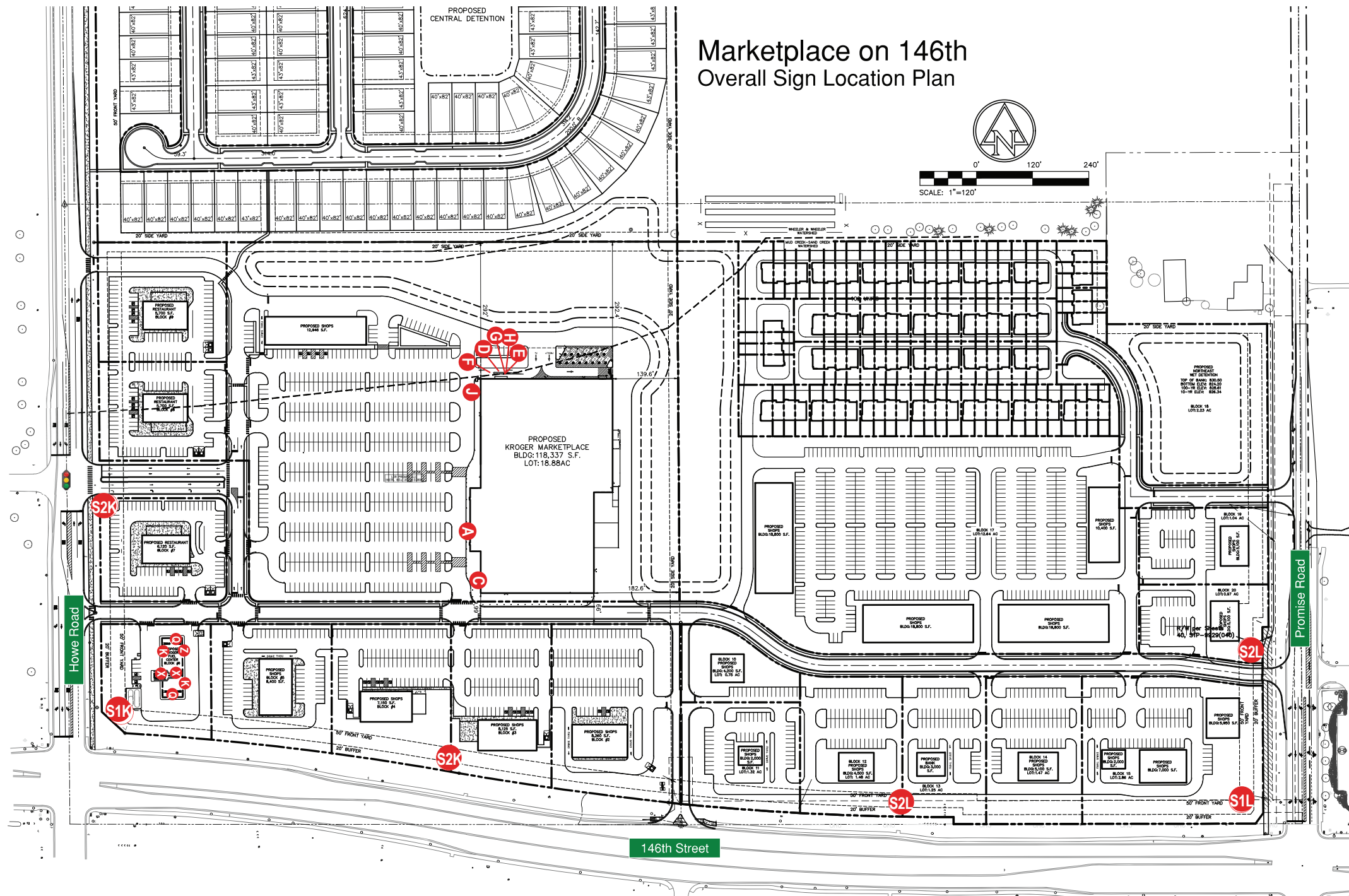




KROGER #898  
146TH & HOWE ROAD  
NOBLESVILLE, IN

1276391386.18 7.12.2024

# Marketplace on 146th Overall Sign Location Plan



QTY.	DESCRIPTION	SQ. FT.
A	1 KROGER MKTPLC. LETTER SET W/CART	555.0
C	1 60" STARBUCKS LOGO SIGN	25.0
D	1 16" PHARMACY DRIVE THRU LETTER SET	27.6
E	1 DT CANOPY ENTER LETTER SET	3.9
F	1 DT CANOPY EXIT LETTER SET	2.75
G	1 OPEN/CLOSED LED SIGN	.875
H	1 DRIVE THRU CLEARANCE BAR	
J	1 PICK UP W/CART PDT LETTER SET	95.4
K	2 FUEL CANOPY LETTER SET W/CART	24.6
Q	2 FUEL CANOPY CART LOGOS	7.8
X	2 FUEL KIOSK CART LOGOS	7.8
Z	1 FUEL CANOPY PRICE SIGNS	16.6
S1K	1 GROUND SIGN	29.1
S1L	1 GROUND SIGN	30.3
S2K	2 DESIGNATION SIGN	78.0
S2L	2 DESIGNATION SIGN	78.0

**KROGER #898**  
**146TH & HOWE ROAD**  
**NOBLESVILLE, IN**



THIS IS AN ORIGINAL UNPUBLISHED DRAWING CREATED FOR YOUR PERSONAL USE IN CONNECTION WITH A PROJECT PLANNED FOR YOU BY CUMMINGS. IT IS NOT TO BE SHOWN OUTSIDE YOUR ORGANIZATION NOR USED, REPRODUCED, COPIED, OR EXHIBITED IN ANY FASHION UNLESS AUTHORIZED IN WRITING BY AN OFFICER OF CUMMINGS SIGNS.

CUSTOMER APPROVAL: \_\_\_\_\_  
 DATE: \_\_\_\_\_

Rev. #	DATE	BY	Rev. #	DATE	BY
Rev. #1	_____	_____	Rev. #4	_____	_____
Rev. #2	_____	_____	Rev. #5	_____	_____
Rev. #3	_____	_____	Rev. #6	_____	_____



DRAWING NO:  
**1276391386.18**  
 DATE: 7.12.2024  
 S. Hawke

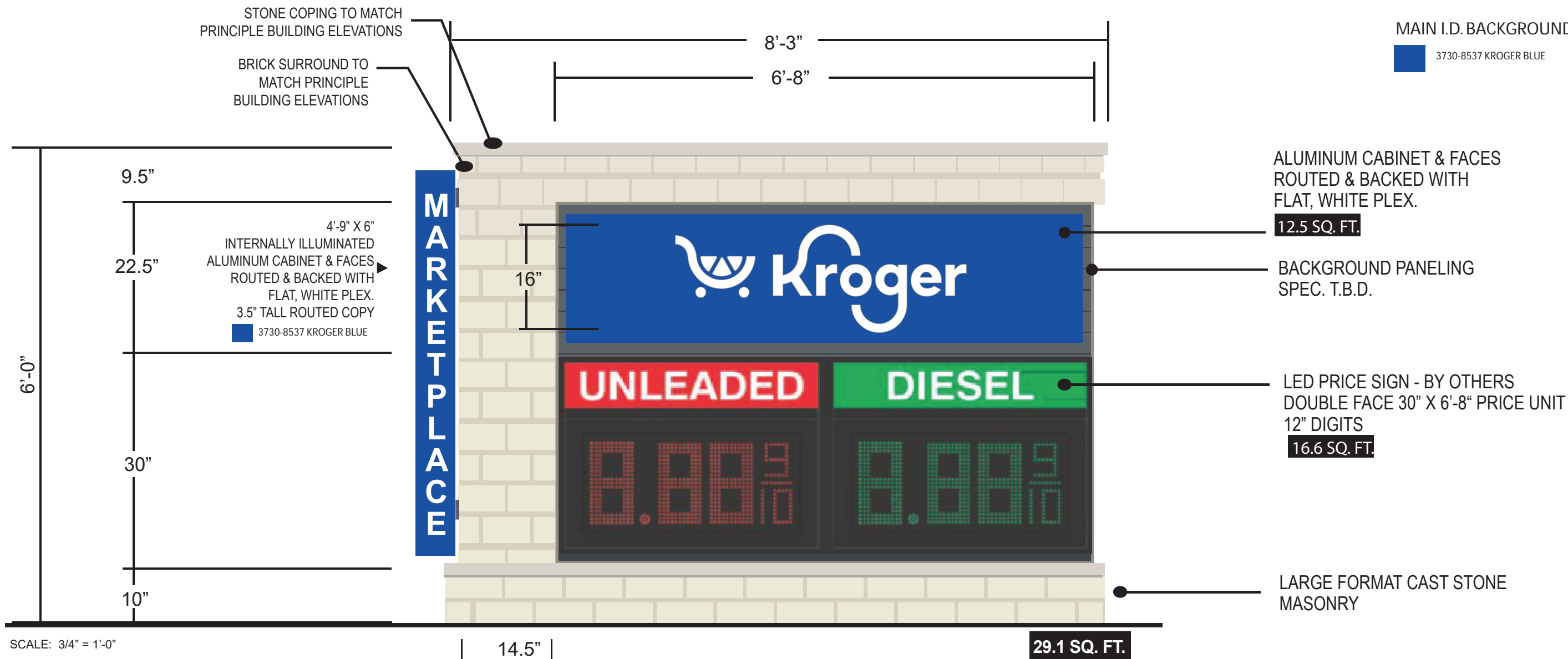
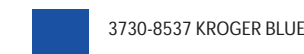
**PRELIMINARY**

S1K

CABINET & CLADDING COLORS T.B.D. FOLLOW COLOR KEY FOR BUILDING

NOTE: SAMPLES OF EXACT SPECIFICATIONS TO BE PROVIDED

MAIN I.D. BACKGROUND



Verification of specs/design required for permitting/installation.  
LED digital price signs require 24 hour dedicated circuit (provided by others) for operation of price sign to remain on all at all times..



THIS IS AN ORIGINAL UNPUBLISHED DRAWING CREATED FOR YOUR PERSONAL USE IN CONNECTION WITH A PROJECT PLANNED FOR YOU BY CUMMINGS SIGNS. IT IS NOT TO BE SHOWN OUTSIDE YOUR ORGANIZATION NOR USED, REPRODUCED, COPIED, OR EXHIBITED IN ANY FASHION UNLESS AUTHORIZED IN WRITING BY AN OFFICER OF CUMMINGS SIGNS.

CUSTOMER APPROVAL:

DATE: \_\_\_\_\_

Rev. #	DATE	BY	Rev. #	DATE	BY
Rev. #1	_____	_____	Rev. #4	_____	_____
Rev. #2	_____	_____	Rev. #5	_____	_____
Rev. #3	_____	_____	Rev. #6	_____	_____



DRAWING NO:  
**1276391386.1851K**  
DATE: 7.12.2024  
S. Hawke

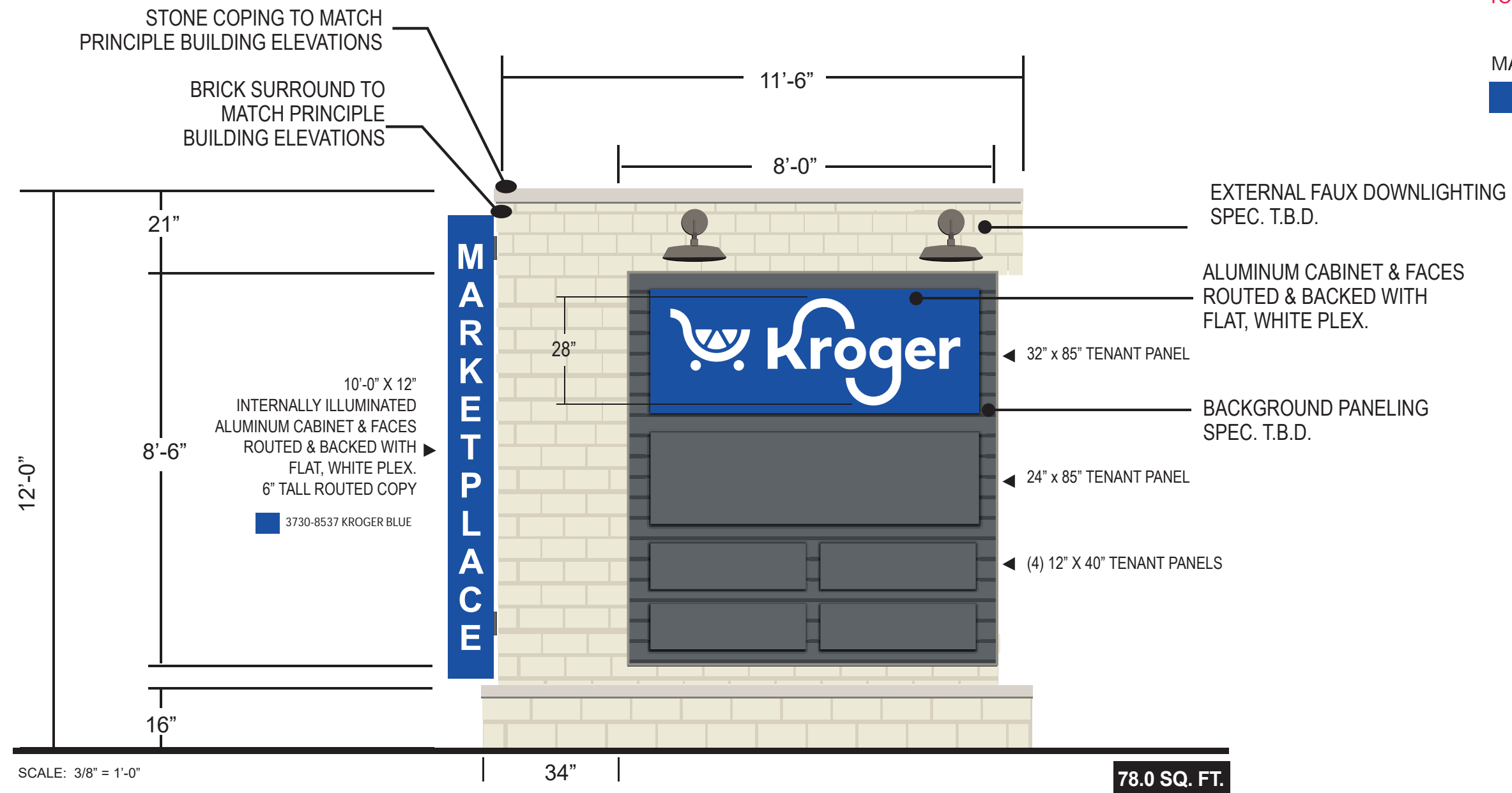
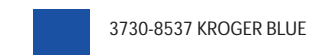
**PRELIMINARY**



CABINET & CLADDING COLORS T.B.D.  
FOLLOW COLOR KEY FOR BUILDING

NOTE: SAMPLES OF  
EXACT SPECIFICATIONS  
TO BE PROVIDED

MAIN I.D. BACKGROUND



THIS IS AN ORIGINAL UNPUBLISHED DRAWING CREATED FOR YOUR PERSONAL USE IN CONNECTION WITH A PROJECT PLANNED FOR YOU BY CUMMINGS SIGNS. IT IS NOT TO BE SHOWN OUTSIDE YOUR ORGANIZATION NOR USED, REPRODUCED, COPIED, OR EXHIBITED IN ANY FASHION UNLESS AUTHORIZED IN WRITING BY AN OFFICER OF CUMMINGS SIGNS.

CUSTOMER APPROVAL:

DATE: \_\_\_\_\_

Rev. #	DATE	BY	Rev. #	DATE	BY
Rev. #1	_____	_____	Rev. #4	_____	_____
Rev. #2	_____	_____	Rev. #5	_____	_____
Rev. #3	_____	_____	Rev. #6	_____	_____



DRAWING NO:  
**1276391386.18P2**

DATE: 7.12.2024

S. Hawke

THIS DESIGN REMAINS OUR EXCLUSIVE PROPERTY AND CANNOT BE DUPLICATED WITHOUT WRITTEN CONSENT

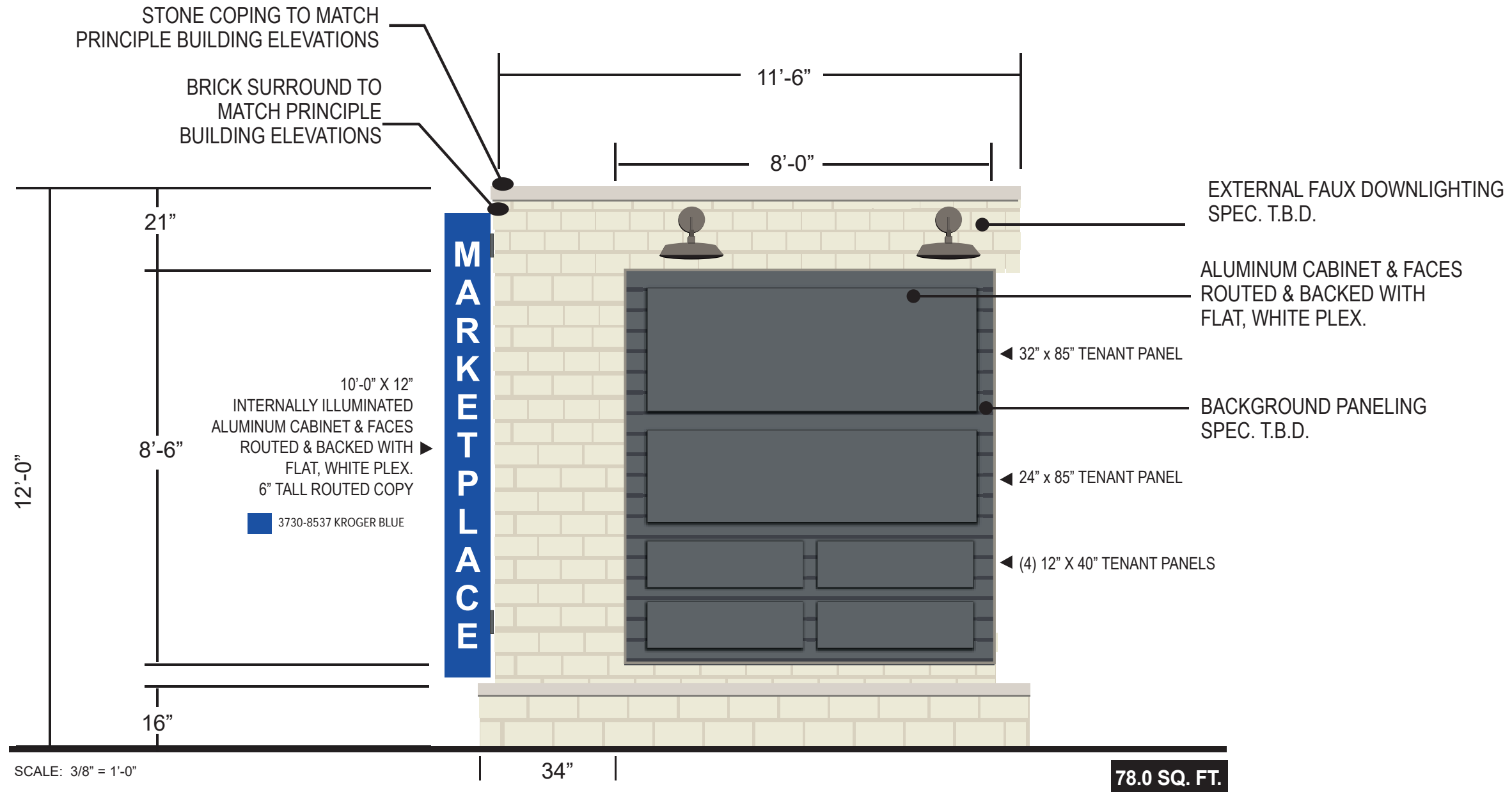


PRELIMINARY

CABINET & CLADDING COLORS T.B.D.  
FOLLOW COLOR KEY FOR BUILDING

NOTE: SAMPLES OF  
EXACT SPECIFICATIONS  
TO BE PROVIDED

S2L



THIS IS AN ORIGINAL UNPUBLISHED DRAWING CREATED FOR YOUR PERSONAL USE IN CONNECTION WITH A PROJECT PLANNED FOR YOU BY CUMMINGS SIGNS. IT IS NOT TO BE SHOWN OUTSIDE YOUR ORGANIZATION NOR USED, REPRODUCED, COPIED, OR EXHIBITED IN ANY FASHION UNLESS AUTHORIZED IN WRITING BY AN OFFICER OF CUMMINGS SIGNS.

CUSTOMER APPROVAL:

DATE: \_\_\_\_\_

Rev. #	DATE	BY	Rev. #	DATE	BY
Rev. #1	_____	_____	Rev. #4	_____	_____
Rev. #2	_____	_____	Rev. #5	_____	_____
Rev. #3	_____	_____	Rev. #6	_____	_____



DRAWING NO:  
1276391386.18P2

DATE: 7.12.2024

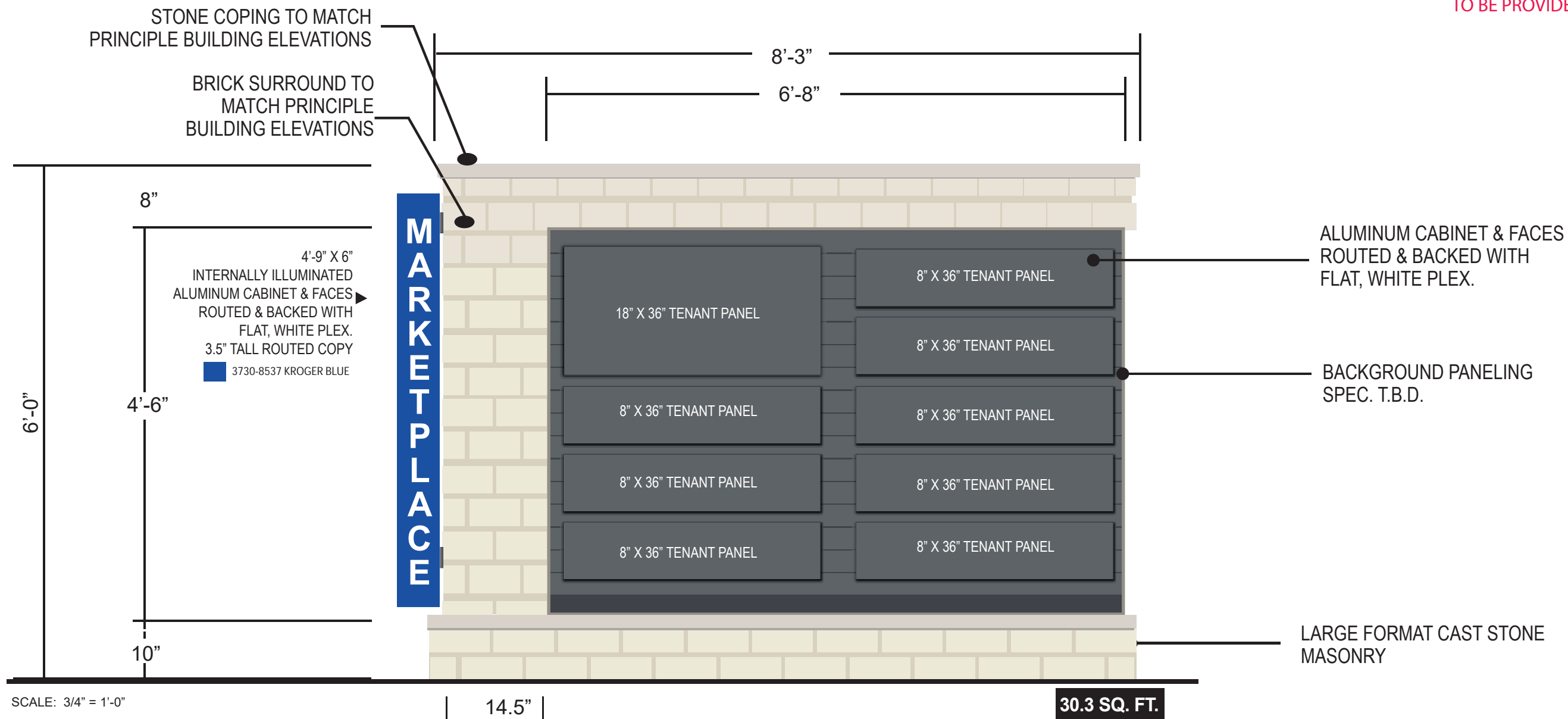
S. Hawke

**PRELIMINARY**

S1L

CABINET & CLADDING COLORS T.B.D.  
FOLLOW COLOR KEY FOR BUILDING

NOTE: SAMPLES OF EXACT SPECIFICATIONS TO BE PROVIDED



THIS IS AN ORIGINAL UNPUBLISHED DRAWING CREATED FOR YOUR PERSONAL USE IN CONNECTION WITH A PROJECT PLANNED FOR YOU BY CUMMINGS SIGNS. IT IS NOT TO BE SHOWN OUTSIDE YOUR ORGANIZATION NOR USED, REPRODUCED, COPIED, OR EXHIBITED IN ANY FASHION UNLESS AUTHORIZED IN WRITING BY AN OFFICER OF CUMMINGS SIGNS.

CUSTOMER APPROVAL:

DATE: \_\_\_\_\_

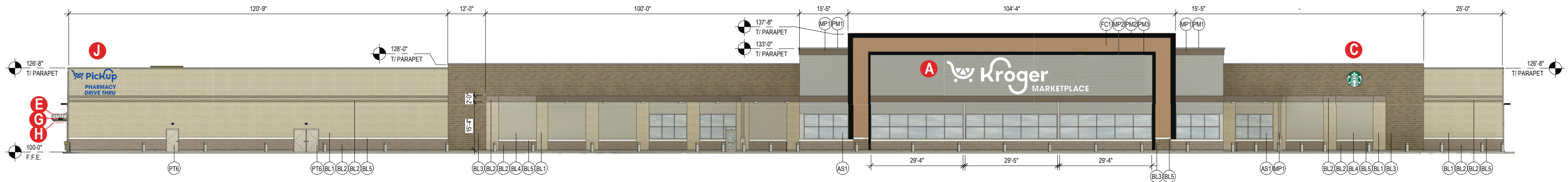
Rev. #	DATE	BY	Rev. #	DATE	BY
Rev. #1	_____	_____	Rev. #4	_____	_____
Rev. #2	_____	_____	Rev. #5	_____	_____
Rev. #3	_____	_____	Rev. #6	_____	_____



DRAWING NO:  
**1276391386.18S1L**

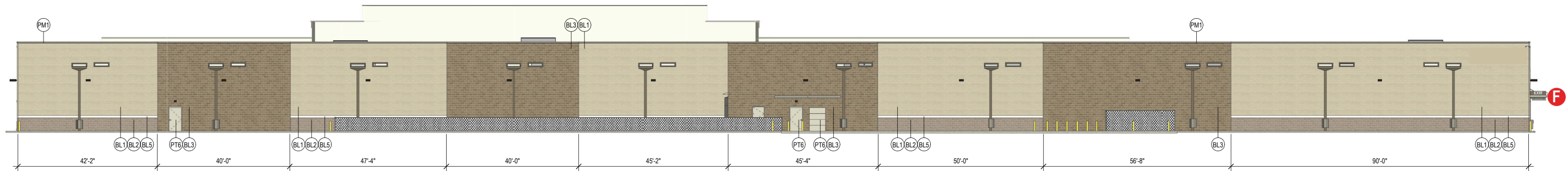
DATE: 7.12.2024

S. Hawke



~~FRONT ELEVATION~~

**WEST ELEVATION**



~~REAR ELEVATION~~

**EAST ELEVATION**

SCALE: 1/32" = 1'-0"

**KROGER #898  
146TH & HOWE ROAD  
NOBLESVILLE, IN**



THIS IS AN ORIGINAL UNPUBLISHED DRAWING CREATED FOR YOUR PERSONAL USE IN CONNECTION WITH A PROJECT PLANNED FOR YOU BY CUMMINGS. IT IS NOT TO BE SHOWN OUTSIDE YOUR ORGANIZATION NOR USED, REPRODUCED, COPIED, OR EXHIBITED IN ANY FASHION UNLESS AUTHORIZED IN WRITING BY AN OFFICER OF CUMMINGS SIGNS.

CUSTOMER APPROVAL:

DATE: \_\_\_\_\_

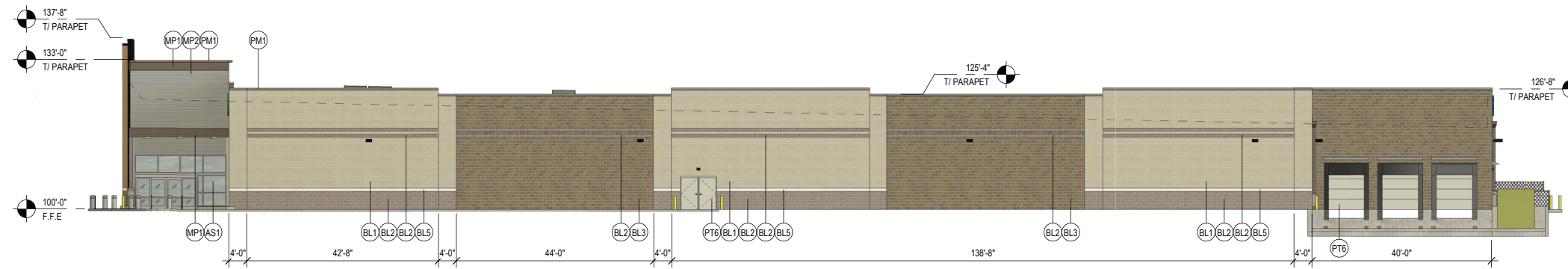
Rev. #	DATE	BY	Rev. #	DATE	BY
Rev. #1	_____	_____	Rev. #4	_____	_____
Rev. #2	_____	_____	Rev. #5	_____	_____
Rev. #3	_____	_____	Rev. #6	_____	_____



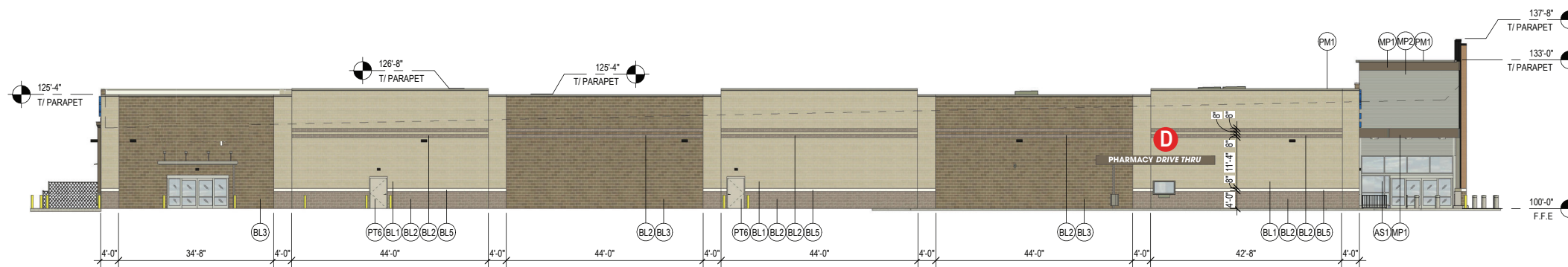
**DRAWING NO:  
1276391386.18**

DATE: 7.12.2024

S. Hawke





~~SIDE ELEVATION~~ **SOUTH ELEVATION**



~~SIDE ELEVATION~~ **NORTH ELEVATION**

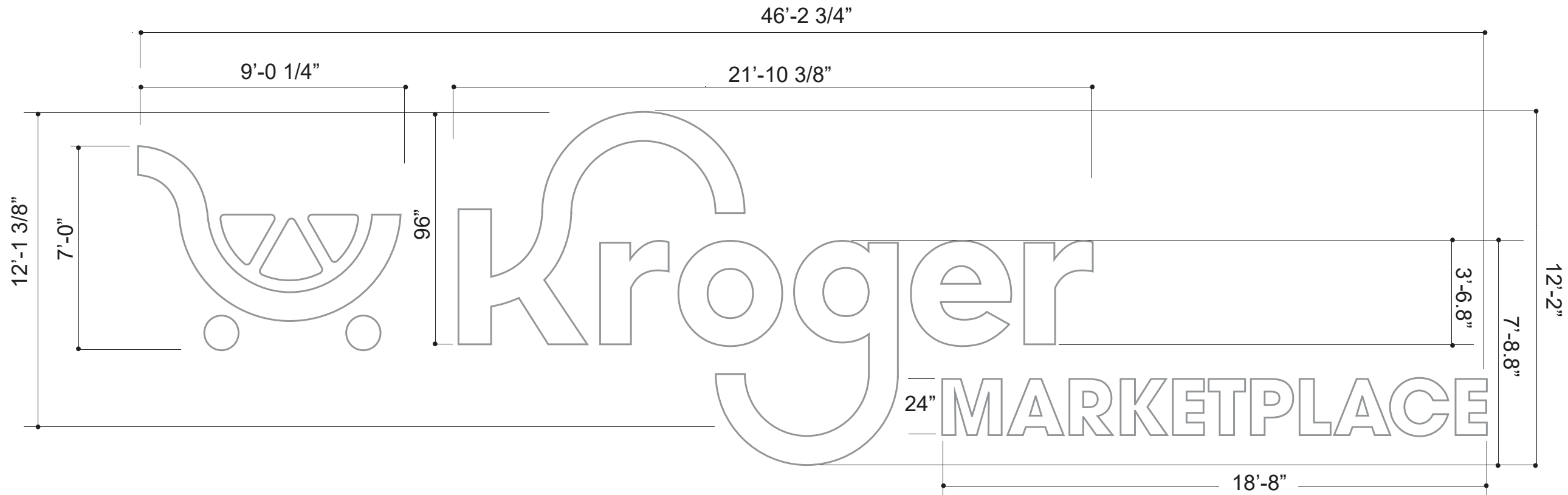
SCALE: 1/32" = 1'-0"




**KROGER #898**  
**146TH & HOWE ROAD**  
**NOBLESVILLE, IN**

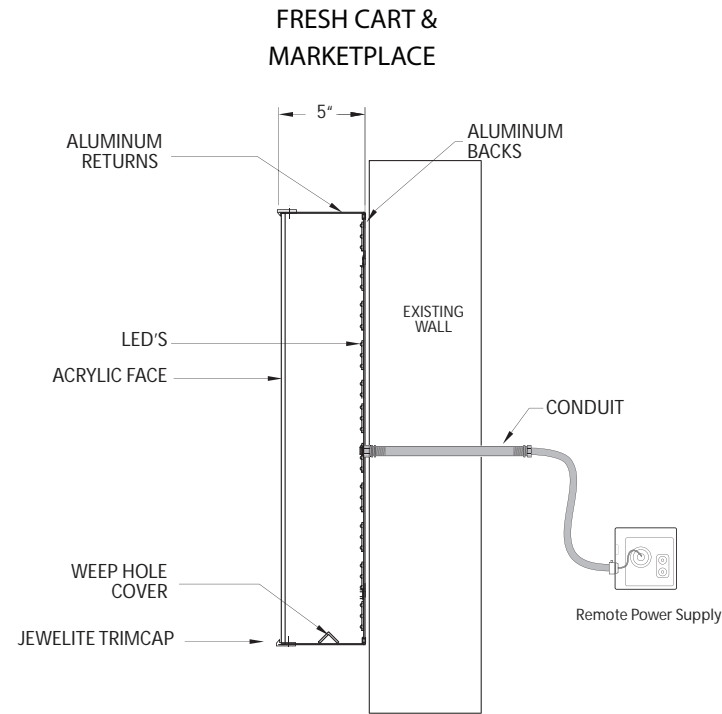
 <small>Customer creation through brand innovation.</small> <small>THIS DESIGN REMAINS OUR EXCLUSIVE PROPERTY AND CANNOT BE DUPLICATED WITHOUT WRITTEN CONSENT</small>	<small>THIS IS AN ORIGINAL UNPUBLISHED DRAWING CREATED FOR YOUR PERSONAL USE IN CONNECTION WITH A PROJECT PLANNED FOR YOU BY CUMMINGS. IT IS NOT TO BE SHOWN OUTSIDE YOUR ORGANIZATION NOR USED, REPRODUCED, COPIED, OR EXHIBITED IN ANY FASHION UNLESS AUTHORIZED IN WRITING BY AN OFFICER OF CUMMINGS SIGNS.</small>	<small>CUSTOMER APPROVAL:</small> <hr/> <small>DATE:</small> _____	<small>DATE</small> <small>BY</small>	<small>DATE</small> <small>BY</small>		<small>DRAWING NO:</small> <b>1276391386.18</b>
			<small>Rev. #1</small> _____	<small>Rev. #4</small> _____		<small>DATE: 7.11.2024</small>
			<small>Rev. #2</small> _____	<small>Rev. #5</small> _____		<small>S. Hawke</small>
<small>Rev. #3</small> _____	<small>Rev. #6</small> _____					



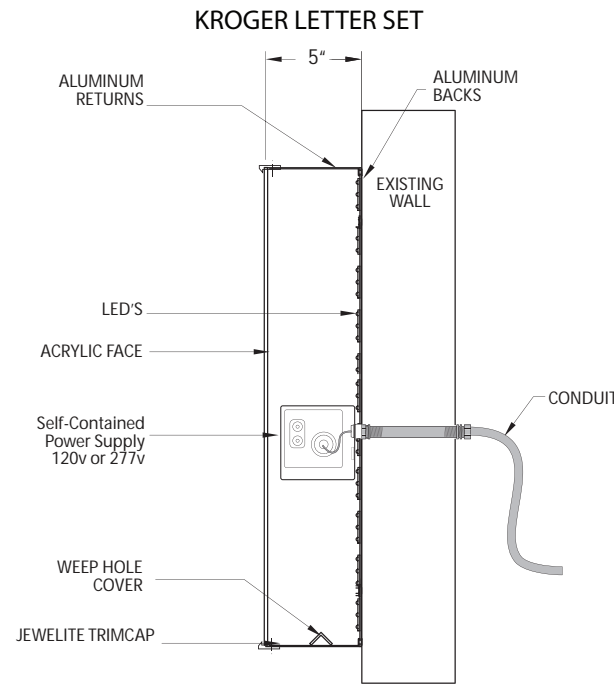
A



-  WHITE ACRYLIC
-  RETAINER: WHITE
-  FILLER: WHITE



LED CL CROSS SECTION  
SCALE: NTS (REFERENCE ONLY)  
EQUIPMENT GROUNDED



LED CL CROSS SECTION  
SCALE: NTS (REFERENCE ONLY)  
EQUIPMENT GROUNDED

**\*MOUNTING CLIPS AS NEEDED  
BY SEPARATE ORDER  
BASED ON SURVEY OR  
BUILDING SPECS**

**555.0 SQ. FT.**

scale: 1/4" = 1'-0"



THIS DESIGN REMAINS OUR EXCLUSIVE PROPERTY AND CANNOT BE DUPLICATED WITHOUT WRITTEN CONSENT

THIS IS AN ORIGINAL UNPUBLISHED DRAWING CREATED FOR YOUR PERSONAL USE IN CONNECTION WITH A PROJECT PLANNED FOR YOU BY CUMMINGS. IT IS NOT TO BE SHOWN OUTSIDE YOUR ORGANIZATION NOR USED, REPRODUCED, COPIED, OR EXHIBITED IN ANY FASHION UNLESS AUTHORIZED IN WRITING BY AN OFFICER OF CUMMINGS SIGNS.

CUSTOMER APPROVAL:

DATE: \_\_\_\_\_

Rev. #	DATE	BY	Rev. #	DATE	BY
Rev. #1	3.18.2022	S.H.	Rev. #4	_____	_____
Rev. #2	3.31.2022	S.H.	Rev. #5	_____	_____
Rev. #3	_____	_____	Rev. #6	_____	_____



DRAWING NO:  
811072182.01A2

DATE: 2.24.2022

St. Louis  
**PAGE 8**

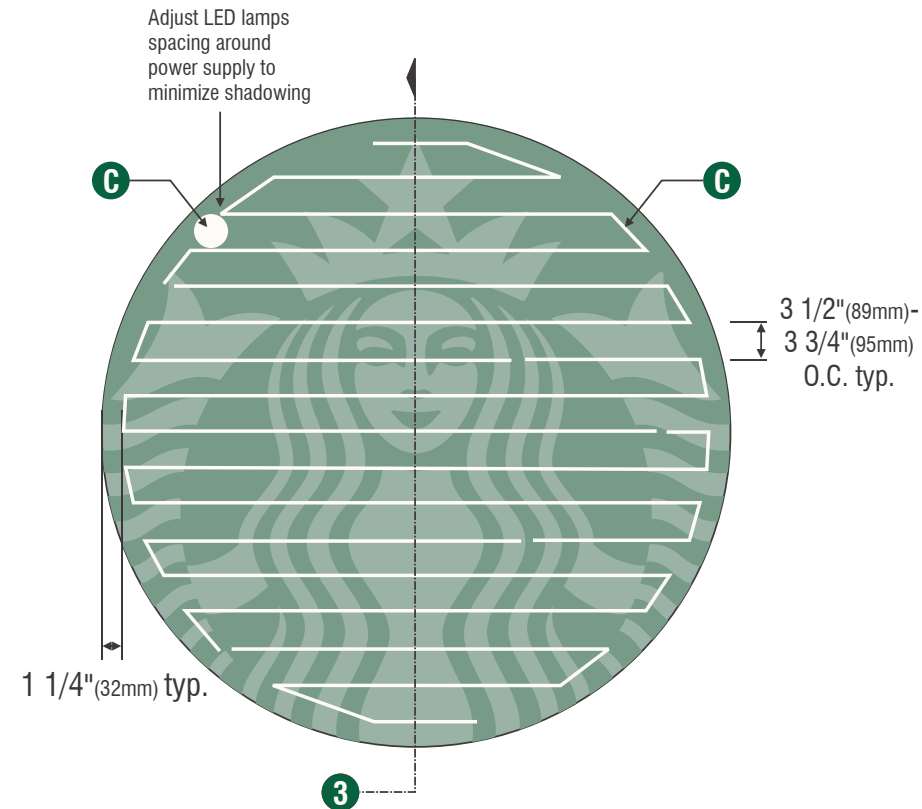


C

### PROVIDED BY OTHERS - PERMITTED & INSTALLED BY CUMMINGS



1 Front View  
Scale: 1/2" = 1'-0"

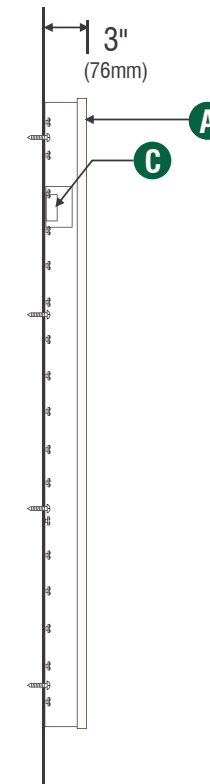


2 LED Detail  
Scale: 1/2" = 1'-0"

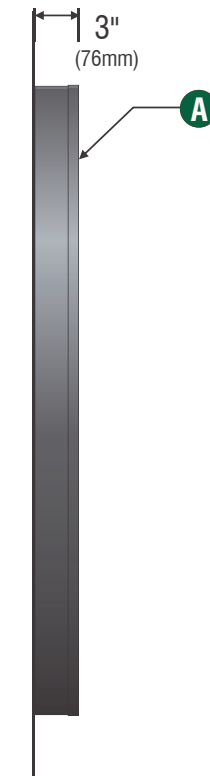
LED's Provided By:  
**LUMi**ficent  
A Nexus Lighting Company

### SPECIFICATIONS:

- A 60" (1524mm) Single faced internally illuminated wall mount logo disk. Cabinet to be 3" (76mm) deep, fabricated aluminum sidewalls and back. Paint cabinet black polyurethane. Faces to be 3/16" (5mm) Acrylite 015-2GP. 1" (25mm) black trimcap with square head screws retainer edging.
- B Graphics of logo to be 1st surface 3M Translucent Scotchcal vinyl- Holly Green #3630-76. Siren to show thru White.
- C Internally illuminate logo disk with white LED's installed to back of disk. Power with self-contained multi-volt power supply contained with an U.L. enclosure covered in white vinyl film. Fasten to wall with required fasteners.



3 Section View  
Scale: 1/2" = 1'-0"



4 Side View  
Scale: 1/2" = 1'-0"



THIS DESIGN REMAINS OUR EXCLUSIVE PROPERTY AND CANNOT BE DUPLICATED WITHOUT WRITTEN CONSENT

THIS IS AN ORIGINAL UNPUBLISHED DRAWING CREATED FOR YOUR PERSONAL USE IN CONNECTION WITH A PROJECT PLANNED FOR YOU BY CUMMINGS SIGNS. IT IS NOT TO BE SHOWN OUTSIDE YOUR ORGANIZATION NOR USED, REPRODUCED, COPIED, OR EXHIBITED IN ANY FASHION UNLESS AUTHORIZED IN WRITING BY AN OFFICER OF CUMMINGS SIGNS.

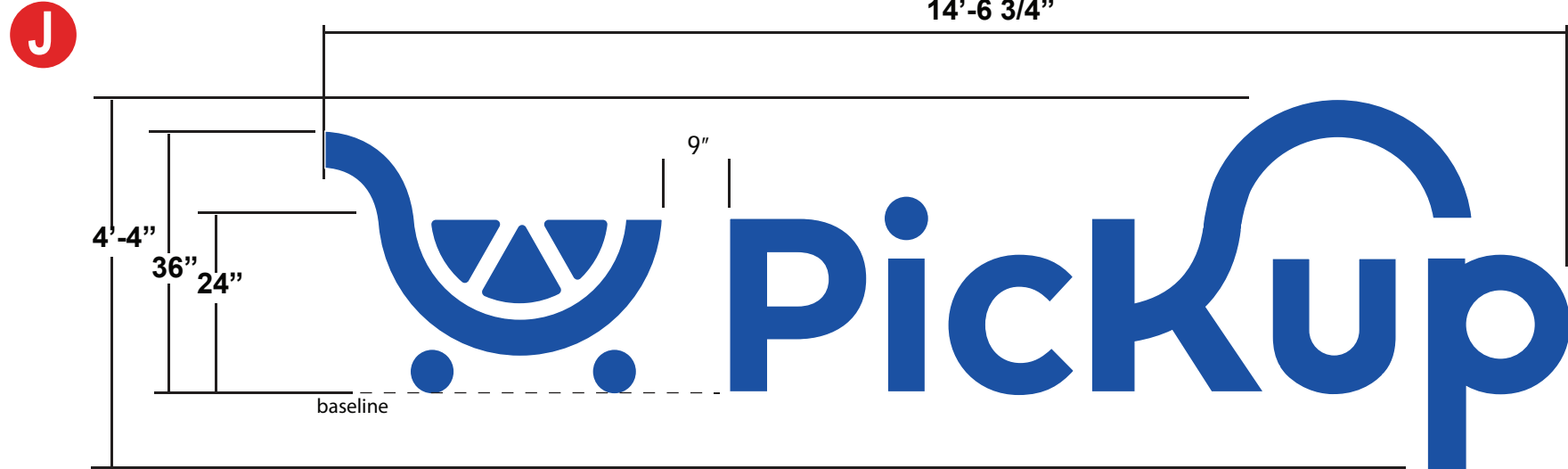
CONCEPTUAL DRAWING - FOR PRESENTATION PURPOSES ONLY. NOT FOR USE IN MFG. OR FOR FINAL CUSTOMER APPROVAL

Rev. #	DATE	BY	Rev. #	DATE	BY
Rev. #1			Rev. #4		
Rev. #2			Rev. #5		
Rev. #3			Rev. #6		




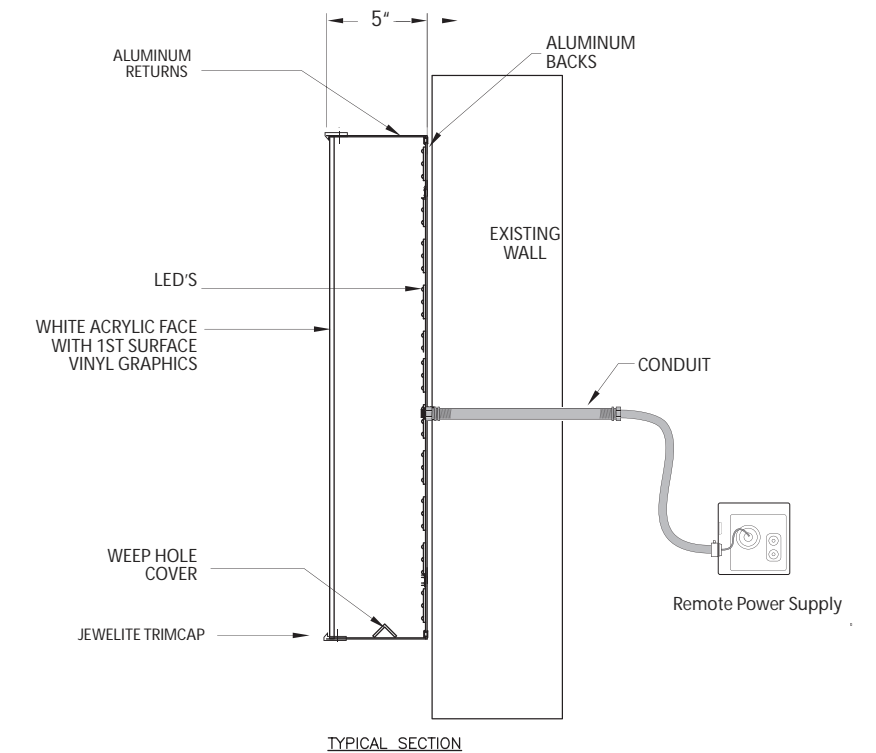
**STARBUCKS COFFEE**

DRAWING NO:  
**84559**  
DATE: 7-21-2016  
S. Hawke



- **INTERNALLY ILLUMINATED CHANNEL LETTERS.**  
ALUMINUM SIDES & BACK PAINTED BLUE.  
BLUE TRIMCAP RETAINER.  
FLAT, WHITE POLYCARBONATE FACE WITH  
1ST SURFACE VINYL GRAPHICS.  
WHITE LED ILLUMINATION.

-  3730-8537 KROGER BLUE
-  RETAINER:  
KROGER BLUE PMS 2728C
-  FILLER:  
KROGER BLUE PMS 2728C



**ILLUMINATED LETTER SET**  
FOR USE ON ALL NEW/EXISTING SUBSTRATES.  
BANNER COLOR CHANNEL LETTERS SHOULD BE USED ONLY  
ON LIGHT OR SIMILAR HIGH-CONTRAST SUBSTRATES.

SCALE: 1/2" = 1'-0"

**95.4 SQ. FT.**

**PART # 403-23-CL36-PUPDT-BL**



THIS IS AN ORIGINAL UNPUBLISHED DRAWING  
CREATED FOR YOUR PERSONAL USE IN  
CONNECTION WITH A PROJECT PLANNED FOR  
YOU BY CUMMINGS. IT IS NOT TO BE SHOWN  
OUTSIDE YOUR ORGANIZATION NOR USED,  
REPRODUCED, COPIED, OR EXHIBITED IN ANY  
FASHION UNLESS AUTHORIZED IN WRITING BY AN  
OFFICER OF CUMMINGS SIGNS.

CUSTOMER APPROVAL:

DATE: \_\_\_\_\_




Rev. #	DATE	BY
Rev. #1	_____	_____
Rev. #2	_____	_____
Rev. #3	_____	_____

Rev. #	DATE	BY
Rev. #4	_____	_____
Rev. #5	_____	_____
Rev. #6	_____	_____

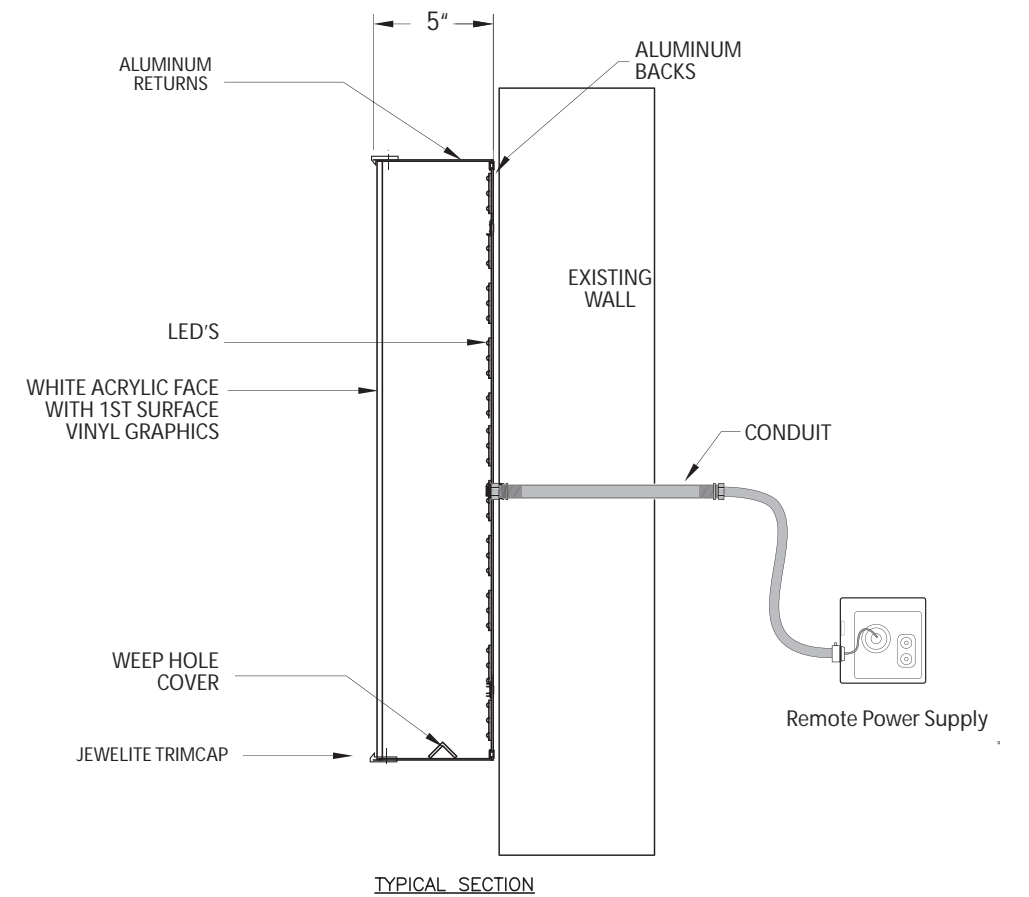
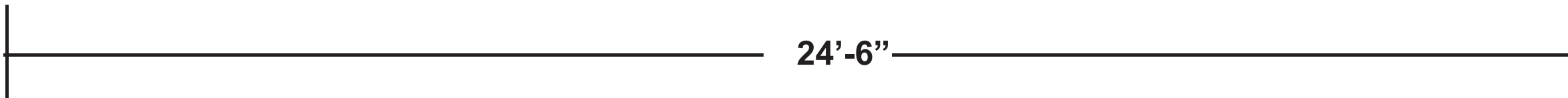


DRAWING NO:  
**7699332377.03A10**  
DATE: 6.8.2023  
S. Hawke

D

-  WHITE
-  RETAINER: WHITE
-  FILLER: WHITE

1'-4" PHARMACY DRIVE THRU



32.6 SQ. FT.



THIS IS AN ORIGINAL UNPUBLISHED DRAWING CREATED FOR YOUR PERSONAL USE IN CONNECTION WITH A PROJECT PLANNED FOR YOU BY CUMMINGS. IT IS NOT TO BE SHOWN OUTSIDE YOUR ORGANIZATION NOR USED, REPRODUCED, COPIED, OR EXHIBITED IN ANY FASHION UNLESS AUTHORIZED IN WRITING BY AN OFFICER OF CUMMINGS SIGNS.

CUSTOMER APPROVAL:

DATE: \_\_\_\_\_

	DATE	BY	DATE	BY
Rev. #1	_____	_____	Rev. #4	_____
Rev. #2	_____	_____	Rev. #5	_____
Rev. #3	_____	_____	Rev. #6	_____

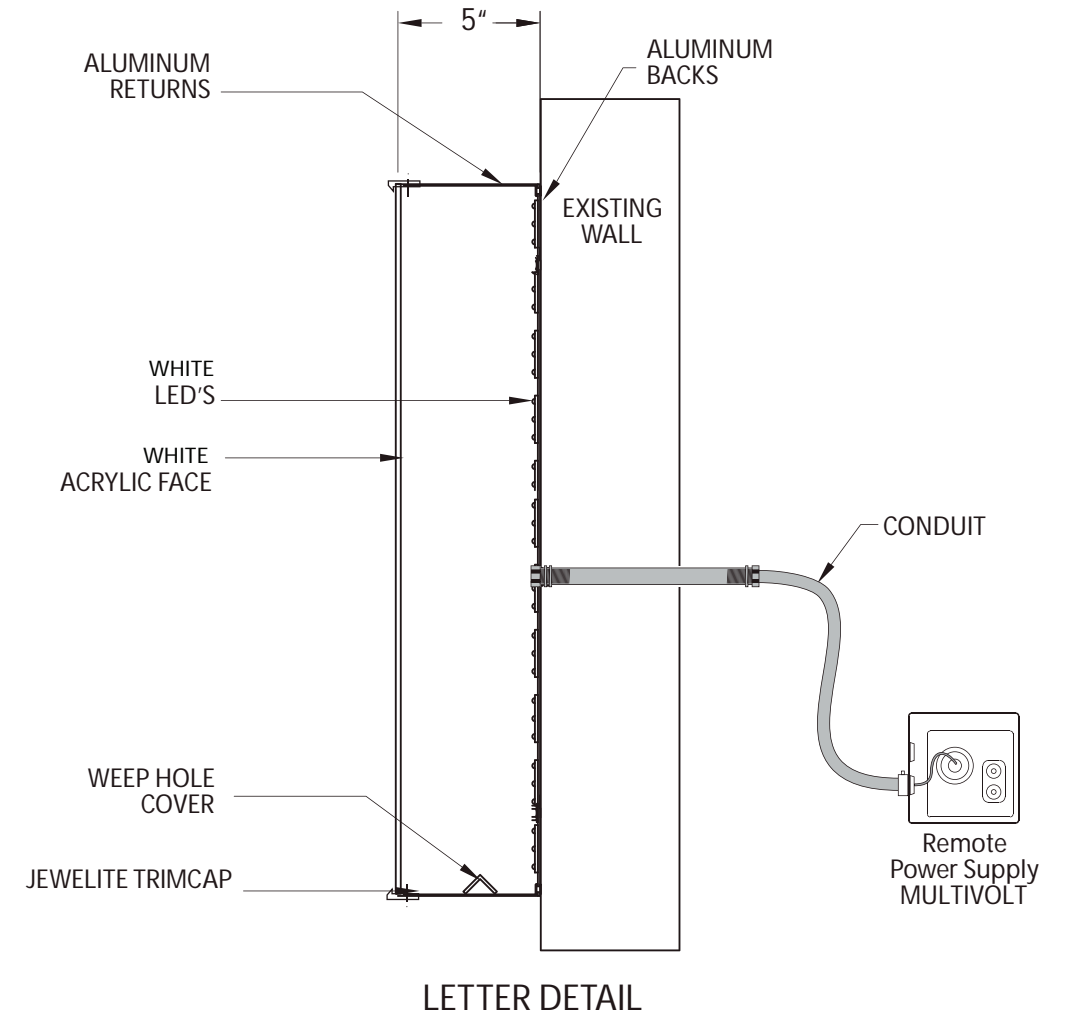
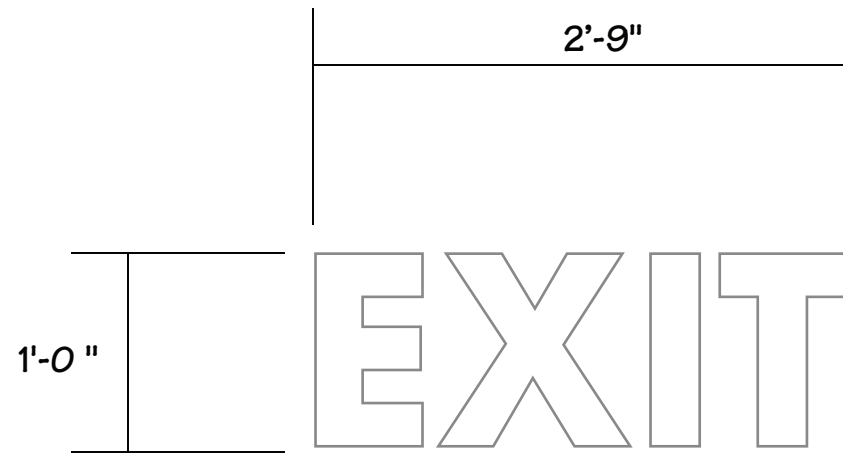


DRAWING NO:  
655312457.03H

DATE: 1-10-2022

S. Hawke

THIS DESIGN REMAINS OUR EXCLUSIVE PROPERTY AND CANNOT BE DUPLICATED WITHOUT WRITTEN CONSENT



- WHITE ACRYLIC FACE
- RETAINER: WHITE
- FILLER: WHITE

2.75 SQ. FT.



THIS IS AN ORIGINAL UNPUBLISHED DRAWING CREATED FOR YOUR PERSONAL USE IN CONNECTION WITH A PROJECT PLANNED FOR YOU BY CUMMINGS. IT IS NOT TO BE SHOWN OUTSIDE YOUR ORGANIZATION NOR USED, REPRODUCED, COPIED, OR EXHIBITED IN ANY FASHION UNLESS AUTHORIZED IN WRITING BY AN OFFICER OF CUMMINGS SIGNS.

CUSTOMER APPROVAL:

DATE: \_\_\_\_\_

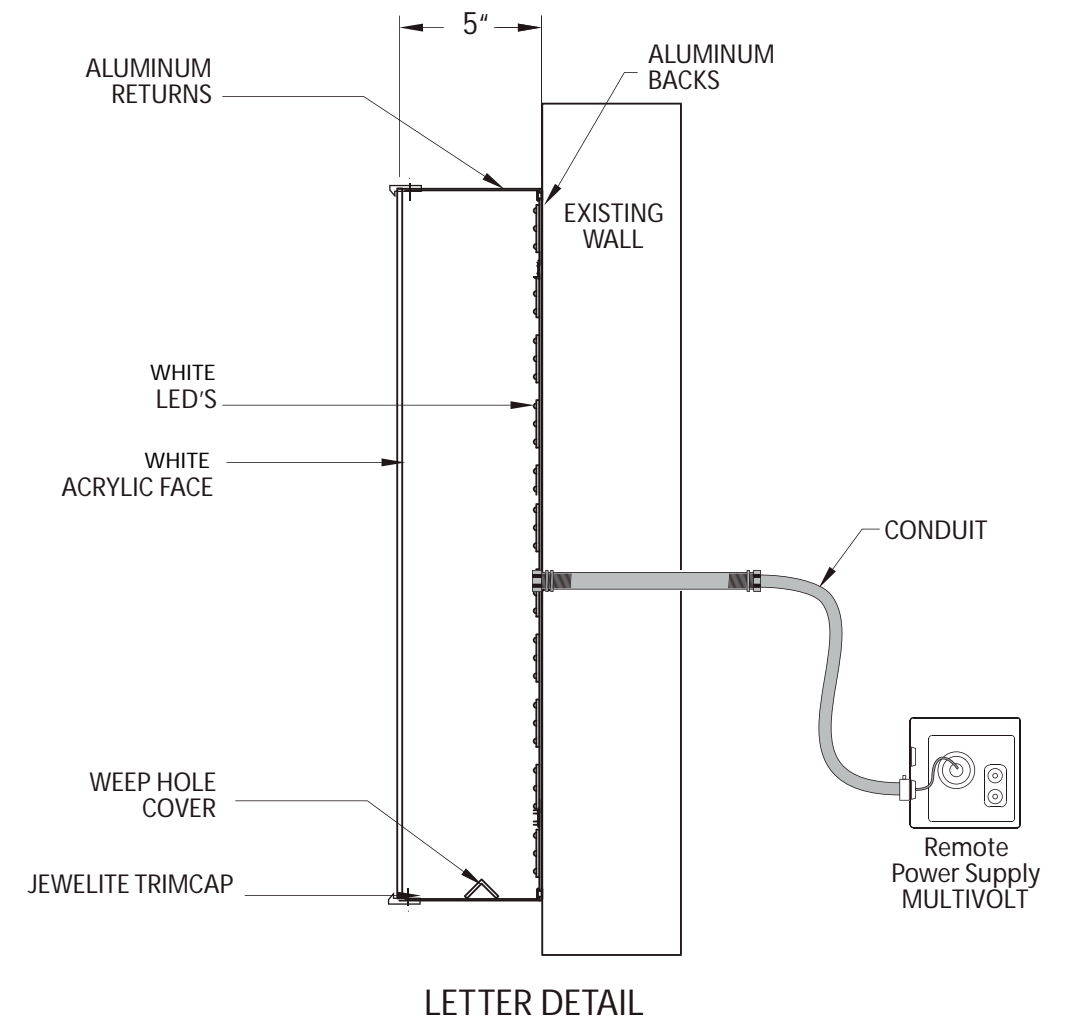
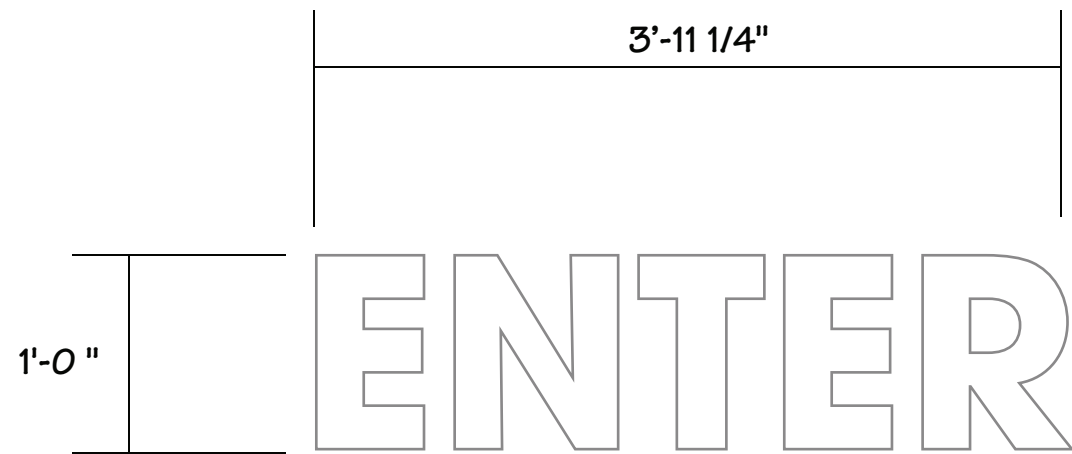
	DATE	BY
Rev. #1	_____	_____
Rev. #2	_____	_____
Rev. #3	_____	_____

	DATE	BY
Rev. #4	_____	_____
Rev. #5	_____	_____
Rev. #6	_____	_____



DRAWING NO:  
784347655.02M

DATE: 11-30-2021  
S. Hawke



- WHITE ACRYLIC FACE
- RETAINER: WHITE
- FILLER: WHITE

**3.9 SQ. FT.**



THIS DESIGN REMAINS OUR EXCLUSIVE PROPERTY AND CANNOT BE DUPLICATED WITHOUT WRITTEN CONSENT

THIS IS AN ORIGINAL UNPUBLISHED DRAWING CREATED FOR YOUR PERSONAL USE IN CONNECTION WITH A PROJECT PLANNED FOR YOU BY CUMMINGS. IT IS NOT TO BE SHOWN OUTSIDE YOUR ORGANIZATION NOR USED, REPRODUCED, COPIED, OR EXHIBITED IN ANY FASHION UNLESS AUTHORIZED IN WRITING BY AN OFFICER OF CUMMINGS SIGNS.

CUSTOMER APPROVAL:

DATE: \_\_\_\_\_

	DATE	BY		DATE	BY
Rev. #1	_____	_____	Rev. #4	_____	_____
Rev. #2	_____	_____	Rev. #5	_____	_____
Rev. #3	_____	_____	Rev. #6	_____	_____

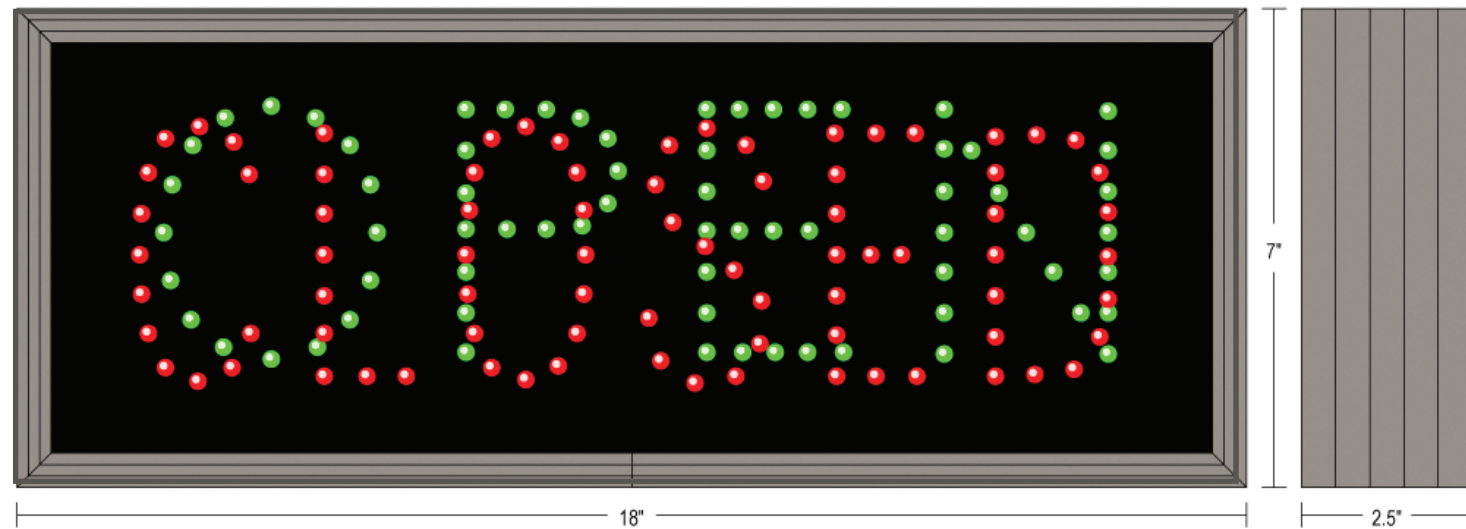


DRAWING NO:  
784347655.02L

DATE: 11-30-2021

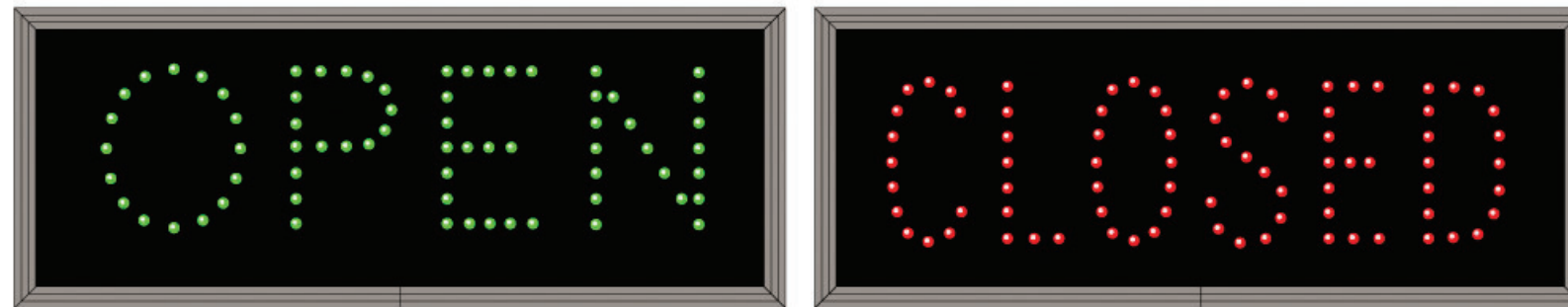
S. Hawk  
**PAGE 13**





SINGLE FACE LED  
ILLUMINATED SIGN.

BRONZE CABINET.  
RED AND GREEN LED'S.  
POLYCARBONATE FACE.  
MESSAGES "BLANK OUT"  
WHEN TURNED OFF -  
ELIMINATING CONFUSION.



NOTE: THIS SIGN REQUIRES A 120V CONNECTION.  
A 277V CONNECTION WILL REQUIRE A  
STEP DOWN TRANSFORMER.

403-TCL718GR-100LED



THIS IS AN ORIGINAL UNPUBLISHED DRAWING  
CREATED FOR YOUR PERSONAL USE IN  
CONNECTION WITH A PROJECT PLANNED FOR  
YOU BY CUMMINGS SIGNS. IT IS NOT TO BE  
SHOWN OUTSIDE YOUR ORGANIZATION NOR  
USED, REPRODUCED, COPIED, OR EXHIBITED IN  
ANY FASHION UNLESS AUTHORIZED IN WRITING  
BY AN OFFICER OF CUMMINGS SIGNS.

CUSTOMER APPROVAL:

DATE: \_\_\_\_\_

Rev. #	DATE	BY	Rev. #	DATE	BY
Rev. #1	10-11-2011	S.H.	Rev. #4	_____	_____
Rev. #2	10-20-2014	S.H.	Rev. #5	_____	_____
Rev. #3	_____	_____	Rev. #6	_____	_____



DRAWING NO:

55160

DATE: 5-13-09

S. Hawke

THIS DESIGN REMAINS OUR EXCLUSIVE PROPERTY AND  
CANNOT BE DUPLICATED WITHOUT WRITTEN CONSENT

H

STEEL SUPPORT CABLE

5'-0"


2" X 2" X 1/4" STEEL TUBE WITH ENDCAP

3/8" DIAMETER STAINLESS STEEL HOOKS ATTACHED TO STEEL TUBE. ATTACH PVC WITH EYE-BOLT, NUT & WASHERS.

NOTE: CLEARANCE COPY MAY VARY PER SITE. CLEARANCE HEIGHT TO BE VERIFIED PRIOR TO PRODUCTION.

MOUNT BAR 18'-0" BEFORE AWNING/CANOPY ON APPROACH SIDE OF DRIVE THRU. ADJUST HEIGHT OF PVC PIPE ACCORDING TO HEIGHT OF CANOPY.

WHITE PVC PIPE WITH END CAPS  
RED VINYL COPY

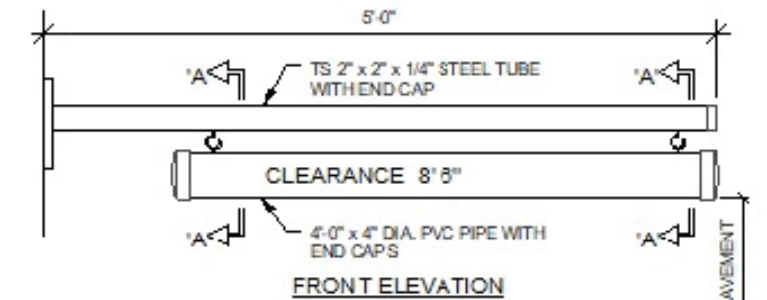
 3M 3630-33 RED

3" COPY  
**CLEARANCE 8'-6"**

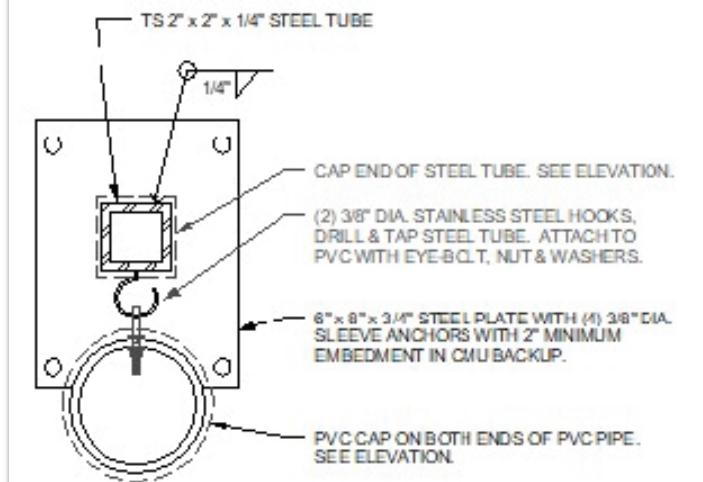
4" DIAMETER PVC PIPE

4'-0"

MOUNT TO 9' ABOVE PAVEMENT



ASD-32 (1 OF 2) DRIVE THRU CANOPY CLEARANCE INDICATOR  
1" = 1'-0"



ASD-32 (2 OF 2) SECTION 'A-A'

PART # 403-STEEL-92469



THIS DESIGN REMAINS OUR EXCLUSIVE PROPERTY AND CANNOT BE DUPLICATED WITHOUT WRITTEN CONSENT.

THIS IS AN ORIGINAL UNPUBLISHED DRAWING CREATED FOR YOUR PERSONAL USE IN CONNECTION WITH A PROJECT PLANNED FOR YOU BY CUMMINGS SIGNS. IT IS NOT TO BE SHOWN OUTSIDE YOUR ORGANIZATION NOR USED, REPRODUCED, COPIED, OR EXHIBITED IN ANY FASHION UNLESS AUTHORIZED IN WRITING BY AN OFFICER OF CUMMINGS SIGNS.

CUSTOMER APPROVAL:

DATE: \_\_\_\_\_

Rev. #	DATE	BY	Rev. #	DATE	BY
Rev. #1	_____	_____	Rev. #4	_____	_____
Rev. #2	_____	_____	Rev. #5	_____	_____
Rev. #3	_____	_____	Rev. #6	_____	_____



DRAWING NO:  
**92525.01**

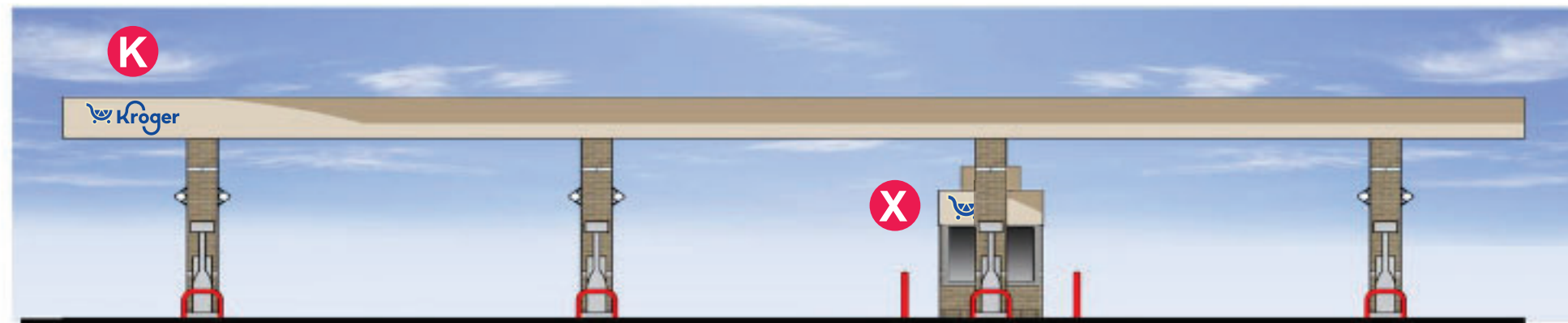
DATE: 3-4-2019

S. Hawke



~~REAR ELEVATION~~

**EAST ELEVATION**



~~FRONT ELEVATION~~

**WEST ELEVATION**



~~LEFT ELEVATION~~

**SOUTH ELEVATION**

~~RIGHT ELEVATION~~

**NORTH ELEVATION**



THIS DESIGN REMAINS OUR EXCLUSIVE PROPERTY AND CANNOT BE DUPLICATED WITHOUT WRITTEN CONSENT

THIS IS AN ORIGINAL UNPUBLISHED DRAWING CREATED FOR YOUR PERSONAL USE IN CONNECTION WITH A PROJECT PLANNED FOR YOU BY CUMMINGS. IT IS NOT TO BE SHOWN OUTSIDE YOUR ORGANIZATION NOR USED, REPRODUCED, COPIED, OR EXHIBITED IN ANY FASHION UNLESS AUTHORIZED IN WRITING BY AN OFFICER OF CUMMINGS SIGNS.

CUSTOMER APPROVAL:

DATE: \_\_\_\_\_

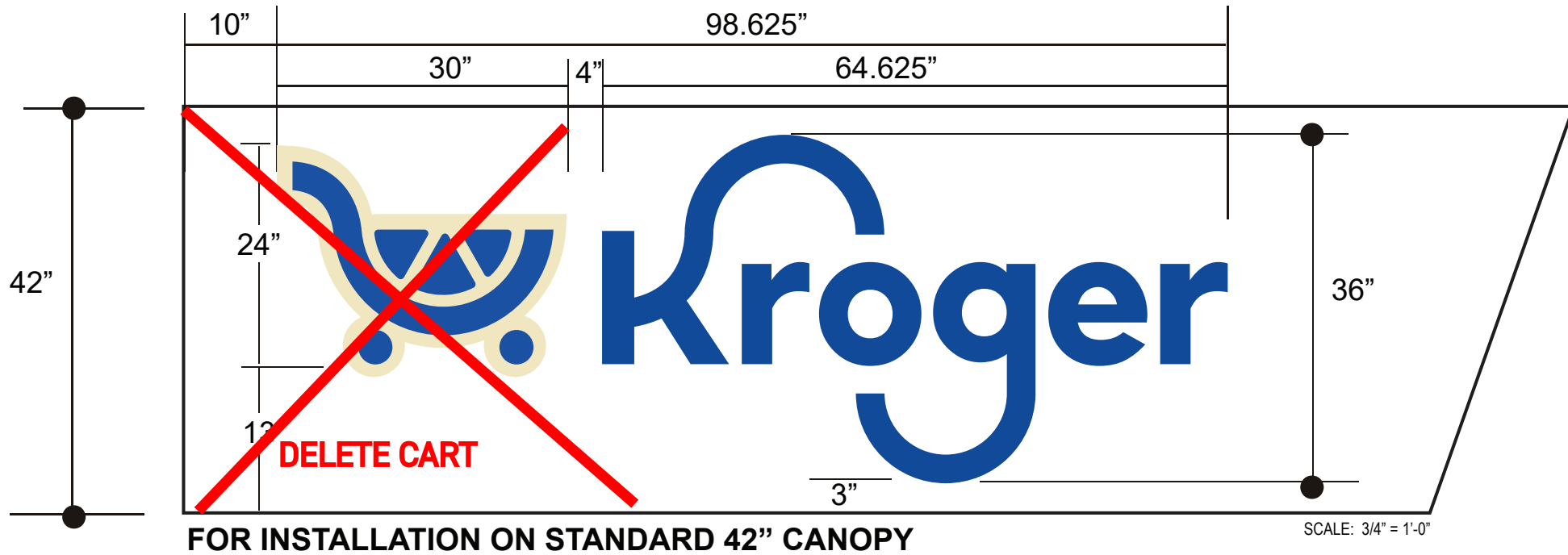
Rev. #	DATE	BY	Rev. #	DATE	BY
Rev. #1	_____	_____	Rev. #4	_____	_____
Rev. #2	_____	_____	Rev. #5	_____	_____
Rev. #3	_____	_____	Rev. #6	_____	_____



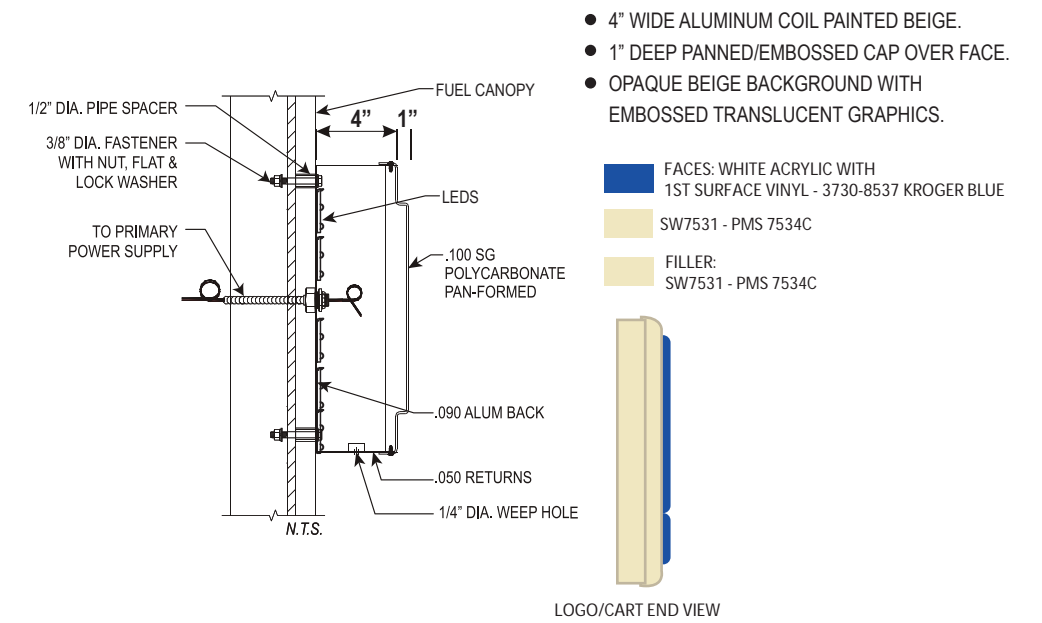
DRAWING NO:  
1276391386.18

DATE 7.12.2024

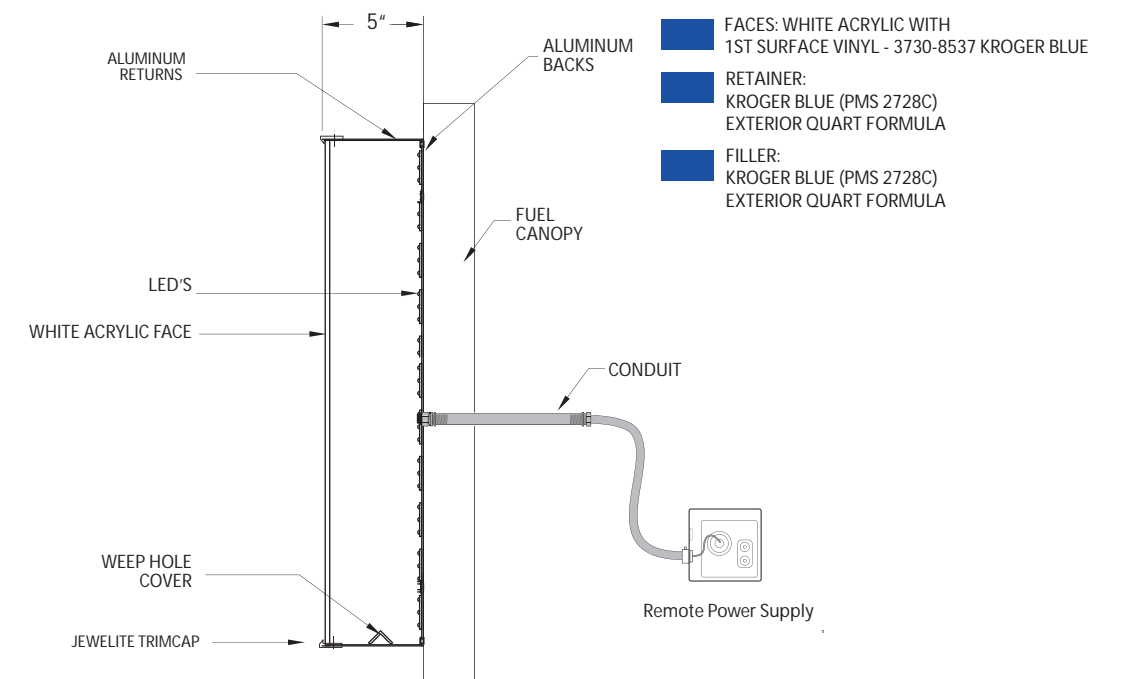
S. Hawke



### CART/LOGO DETAIL



### LETTER DETAIL



**\*\*Install instructions per SPG requirement - Kroger specifications require secondary wiring on gas canopies to be contained within conduit as provided by Cummings.**

**24.6 SQ. FT.**



THIS IS AN ORIGINAL UNPUBLISHED DRAWING CREATED FOR YOUR PERSONAL USE IN CONNECTION WITH A PROJECT PLANNED FOR YOU BY CUMMINGS. IT IS NOT TO BE SHOWN OUTSIDE YOUR ORGANIZATION NOR USED, REPRODUCED, COPIED, OR EXHIBITED IN ANY FASHION UNLESS AUTHORIZED IN WRITING BY AN OFFICER OF CUMMINGS SIGNS.

CUSTOMER APPROVAL:

DATE: \_\_\_\_\_

Rev. #	DATE	BY	Rev. #	DATE	BY
Rev. #1	_____	_____	Rev. #4	_____	_____
Rev. #2	_____	_____	Rev. #5	_____	_____
Rev. #3	_____	_____	Rev. #6	_____	_____



DRAWING NO:  
**809686509.11B**  
DATE: 10.10.2023  
S. Hawke

THIS DESIGN REMAINS OUR EXCLUSIVE PROPERTY AND CANNOT BE DUPLICATED WITHOUT WRITTEN CONSENT



Z

# 12in Double Product, Single Face

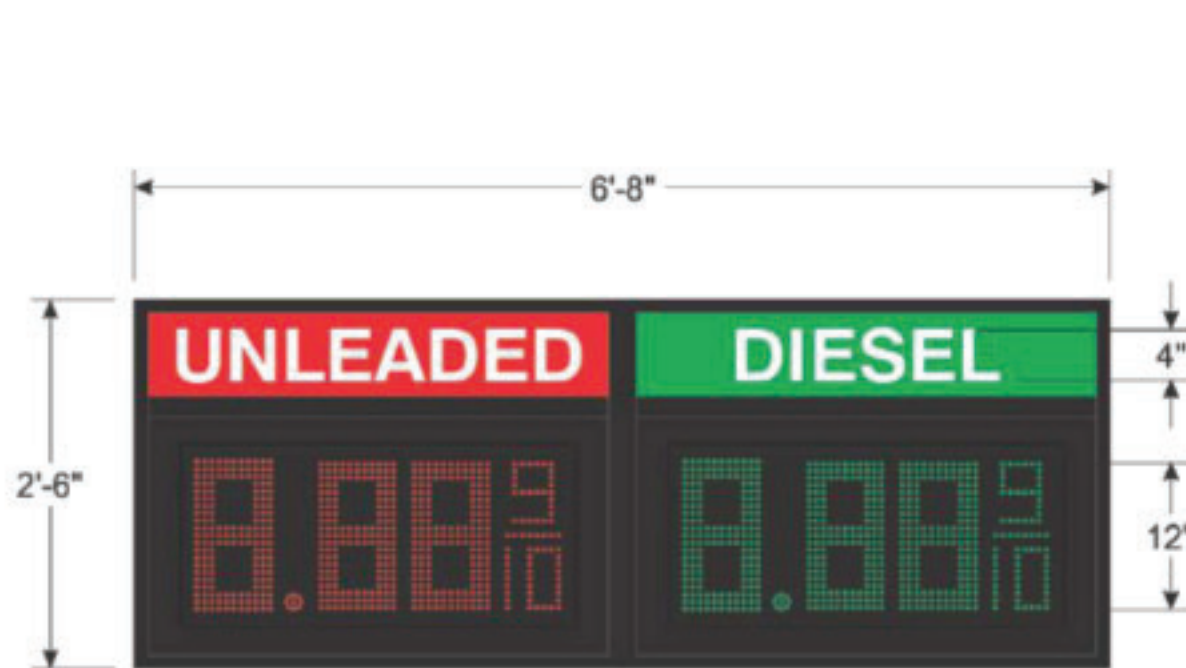
## COUPA#:555011 (Part number also used for existing sign custom kits)

### CONSTRUCTION:

- Fabricate a double product S/F LED price sign; using 12" LED units
- Illumination: 12VDC LED backlighting.
- Cabinet: Aluminum housing painted black.
- Commodity panels:
  - .177" white acrylic decorated with 3M 3630 scotchcal film 1st surface
  - - Red, 3630-33
  - - Green, 3630-26

### ELECTRICAL:

- 120 VAC, Total circuits 2, 10A recommended
- Circuit 1 (LIGHTS) 1 A
- Circuit 2 (LED price) 1 A



### ELEVATION

SCALE: 3/4" = 1'-0"

2" x 2" x 1/8" Steel Angle Bolted to Back (Full Length)

10 1/2"



### END VIEW

\*Contact Landmark to discuss your specific needs.

SIGN AREA: 16.67 sqft

**LANDMARK**

Sign Alliance, Inc.  
Working Together For You

Phone: 719.505-5455

Client:

**The Kroger Co.**

Date:

02/08/2015

Drawn by:

MLB

Revisions:

1) Updated. 4/20/15

Drawing Number:

150110.2

Sheet:

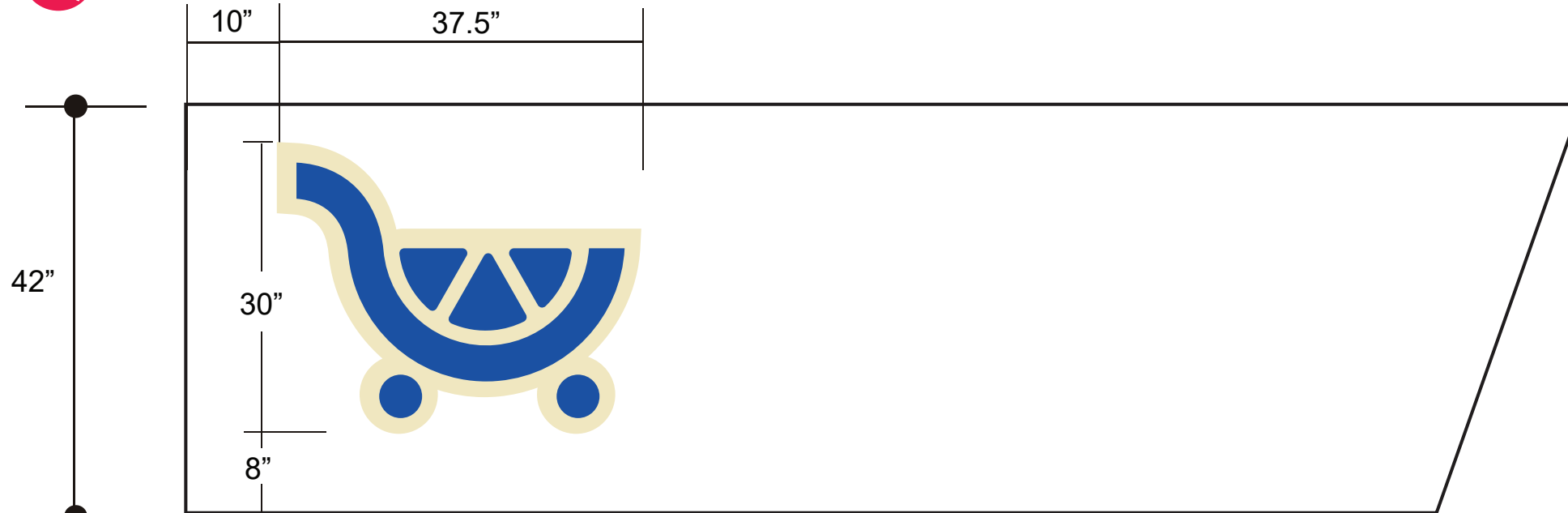
1 of 1

Approved:

Notes:

This is an original unpublished drawing created by L&M Inc. It is submitted for your personal use in conjunction with a project being planned for you by L&M Inc. It is not to be shown to anyone outside your organization, nor is it to be used, copied, reproduced, or distributed in any fashion.





FOR INSTALLATION ON STANDARD 42" CANOPY

SCALE: 3/4" = 1'-0"

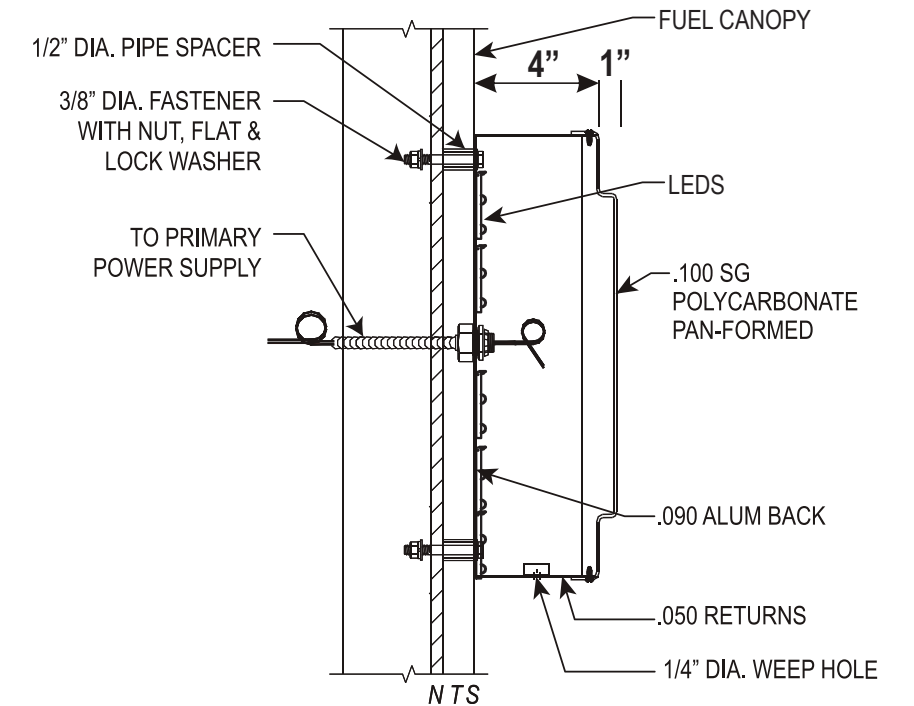
### CART/LOGO DETAIL

- 4" WIDE ALUMINUM COIL PAINTED SILVER.
- 1" DEEP PANNED/EMBOSSSED CAP OVER FACE.
- OPAQUE BEIGE BACKGROUND WITH EMBOSSED TRANSLUCENT GRAPHICS.

- FACES: WHITE ACRYLIC WITH 1ST SURFACE VINYL - 3730-8537 KROGER BLUE
- SW7531 - PMS 7534C
- FILLER: SW7531 - PMS 7534C



LOGO/CART END VIEW



SCALE: 3/8" = 1'-0"

**\*\*Install instructions per SPG requirement - Kroger specifications require secondary wiring on gas canopies to be contained within conduit as provided by Cummings.**

**7.8 SQ. FT.**



THIS IS AN ORIGINAL UNPUBLISHED DRAWING CREATED FOR YOUR PERSONAL USE IN CONNECTION WITH A PROJECT PLANNED FOR YOU BY CUMMINGS. IT IS NOT TO BE SHOWN OUTSIDE YOUR ORGANIZATION NOR USED, REPRODUCED, COPIED, OR EXHIBITED IN ANY FASHION UNLESS AUTHORIZED IN WRITING BY AN OFFICER OF CUMMINGS SIGNS.

CUSTOMER APPROVAL:

DATE: \_\_\_\_\_

Rev. #	DATE	BY	Rev. #	DATE	BY
Rev. #1	_____	_____	Rev. #4	_____	_____
Rev. #2	_____	_____	Rev. #5	_____	_____
Rev. #3	_____	_____	Rev. #6	_____	_____



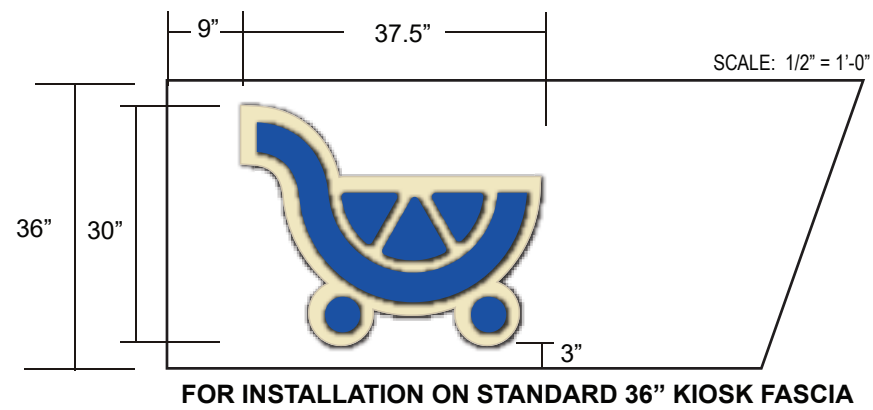
DRAWING NO:  
**809686509.11F**

DATE: 10.10.2023

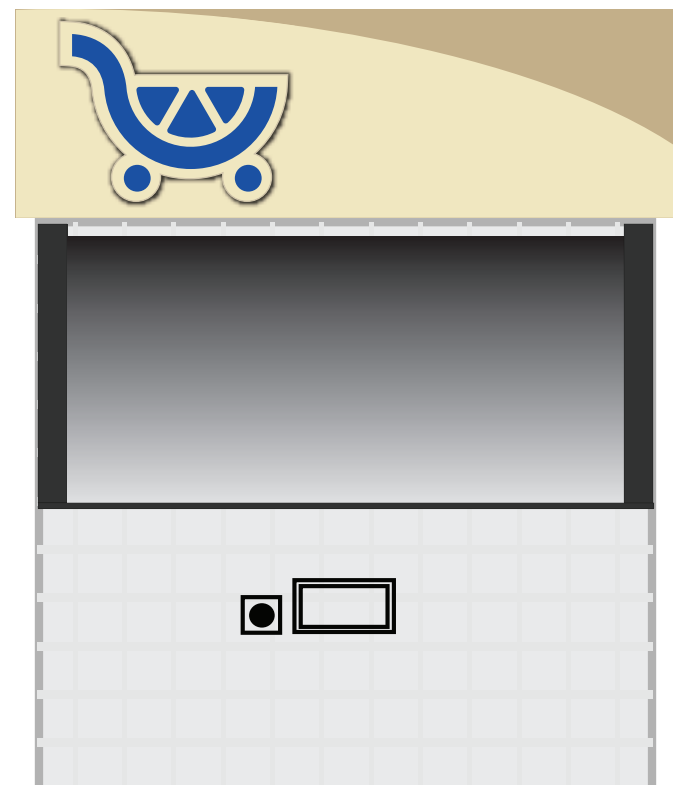
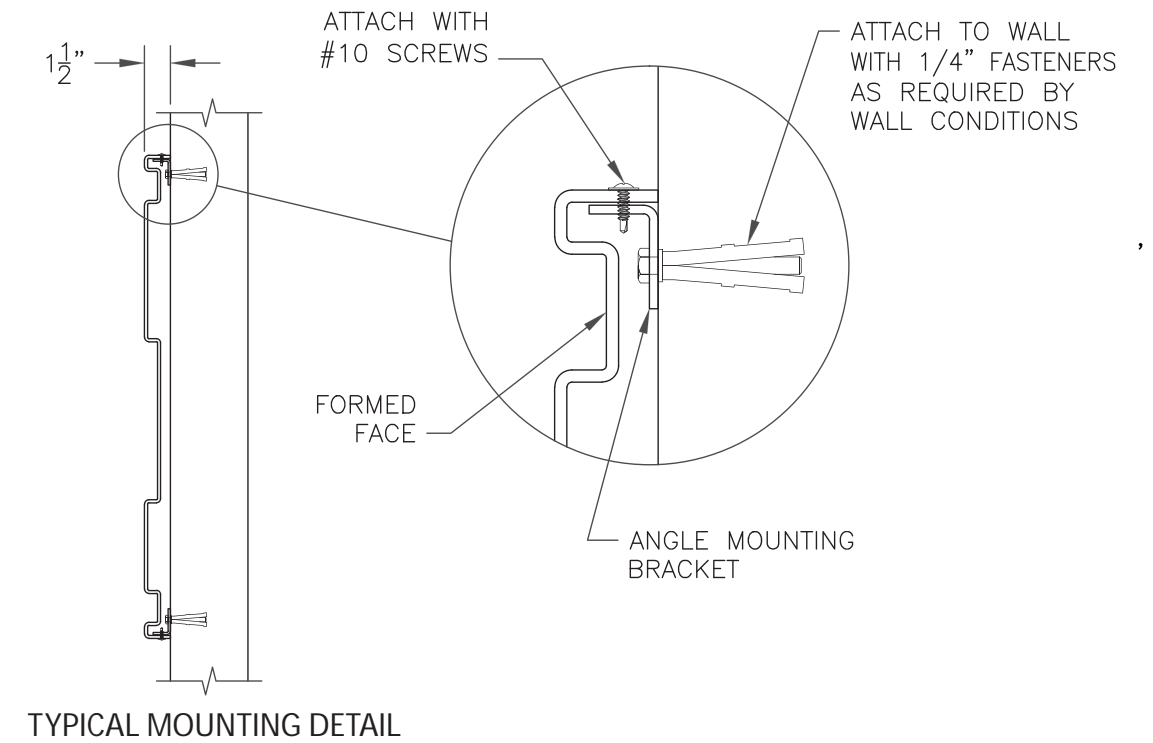
S. Hawke

THIS DESIGN REMAINS OUR EXCLUSIVE PROPERTY AND CANNOT BE DUPLICATED WITHOUT WRITTEN CONSENT

NON-ILLUMINATED

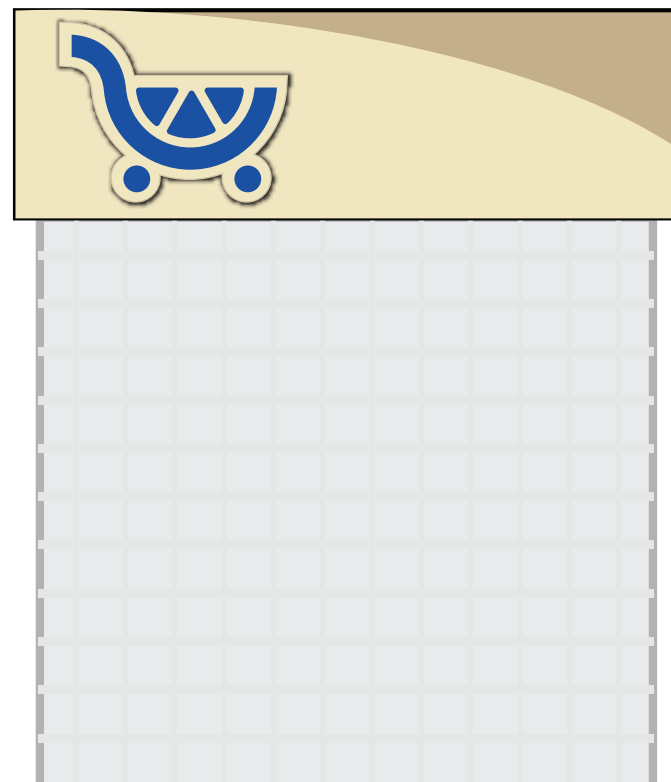


SIDE VIEW



FRONT STORE VIEW


SCALE: 3/8" = 1'-0"



BACK STORE VIEW

SCALE: 3/8" = 1'-0"

FACES: FORMED WHITE POLYCARBONATE FACES WITH EMBOSSED GRAPHICS.

 3730-8537 KROGER BLUE

 TAN

7.8 SQ. FT.

PART # 403-23-NI30X30.75CRM



THIS DESIGN REMAINS OUR EXCLUSIVE PROPERTY AND CANNOT BE DUPLICATED WITHOUT WRITTEN CONSENT

THIS IS AN ORIGINAL UNPUBLISHED DRAWING CREATED FOR YOUR PERSONAL USE IN CONNECTION WITH A PROJECT PLANNED FOR YOU BY CUMMINGS. IT IS NOT TO BE SHOWN OUTSIDE YOUR ORGANIZATION NOR USED, REPRODUCED, COPIED, OR EXHIBITED IN ANY FASHION UNLESS AUTHORIZED IN WRITING BY AN OFFICER OF CUMMINGS SIGNS.

CUSTOMER APPROVAL:

DATE: \_\_\_\_\_

Rev. #	DATE	BY
Rev. #1	3.30.2023	S.H.
Rev. #2	_____	_____
Rev. #3	_____	_____

Rev. #	DATE	BY
Rev. #4	_____	_____
Rev. #5	_____	_____
Rev. #6	_____	_____



DRAWING NO:  
1053010212.01B

DATE: 05.02.2023

J. Allington