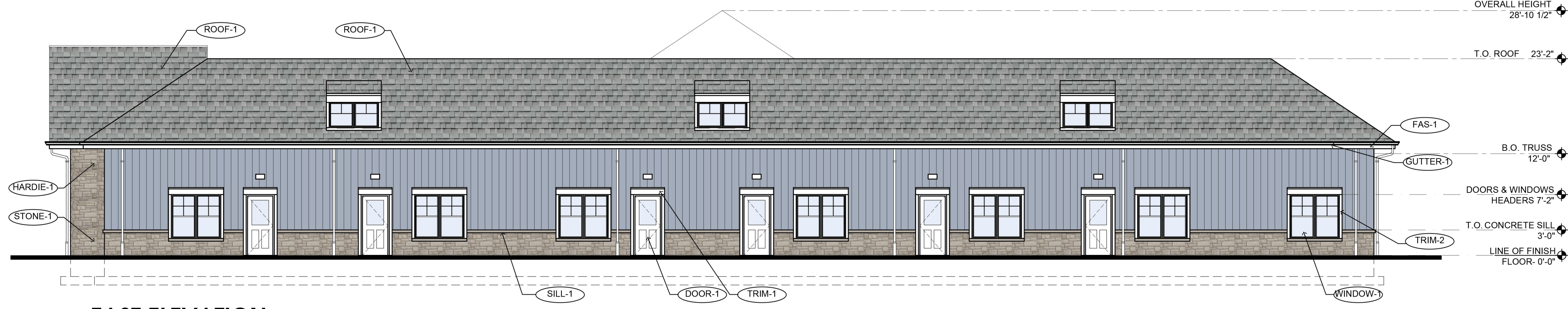
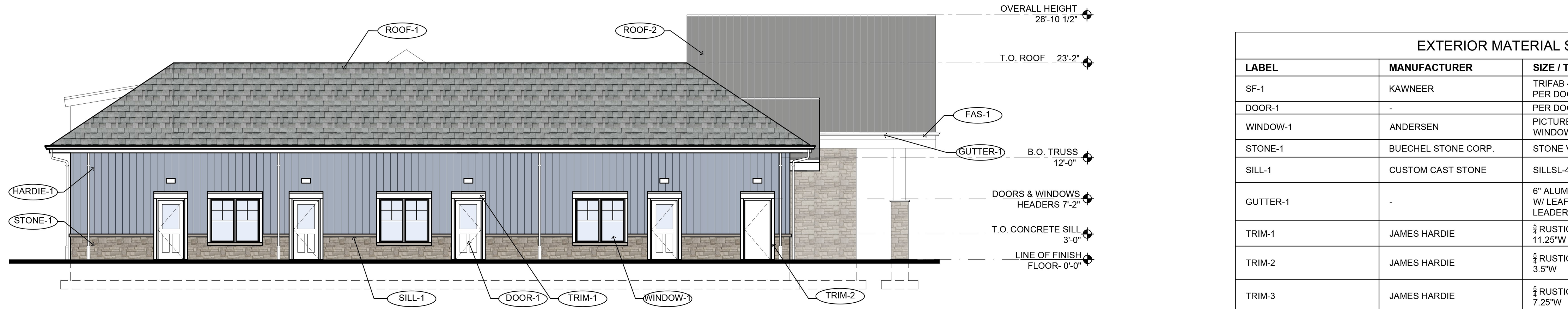


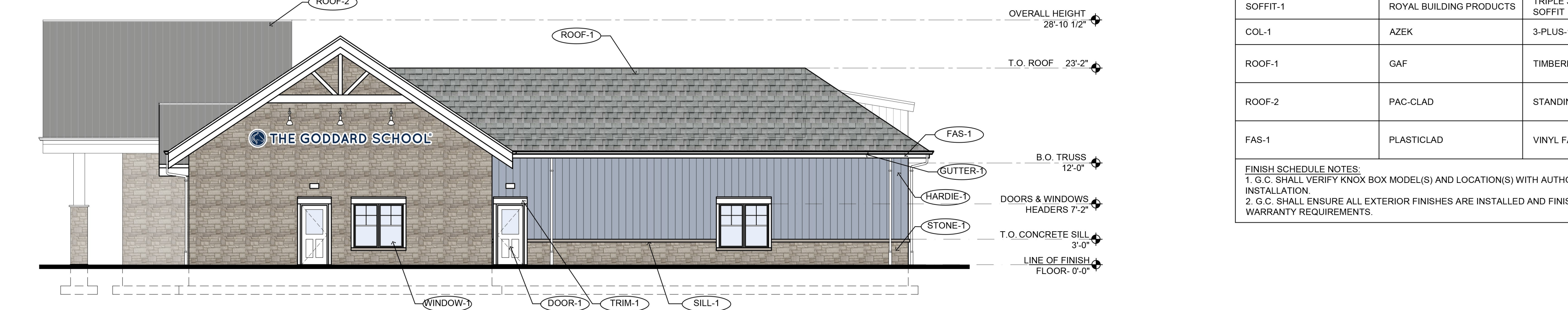
**1 WEST ELEVATION**  
SCALE : 1/8" = 1'-0"



**2 EAST ELEVATION**  
SCALE : 1/8" = 1'-0"



**3 NORTH ELEVATION**  
SCALE : 1/8" = 1'-0"

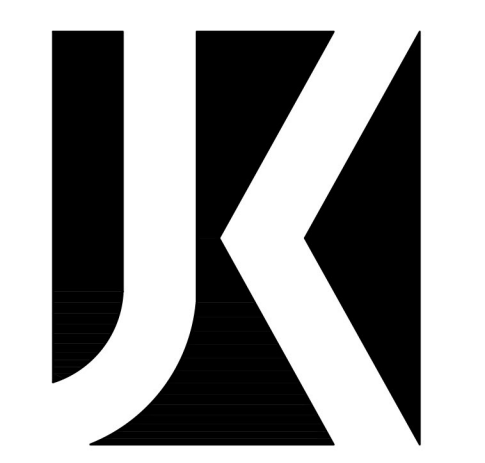


**4 SOUTH ELEVATION**  
SCALE : 1/8" = 1'-0"



EXTERIOR MATERIAL SCHEDULE			
LABEL	MANUFACTURER	SIZE / TYPE	FINISH / COLOR
SF-1	KAWNEER	TRIFAB 451T / 350 PER DOOR SCHEDULE	WHITE
DOOR-1	-	PER DOOR SCHEDULE	FACTORY PRIMED, WHITE
WINDOW-1	ANDERSEN	PICTURE 100 SERIES PER WINDOW SCHEDULE	WHITE
STONE-1	BUECHEL STONE CORP.	STONE VENEER - ASHLAR	CHILTON COUNTRY SQUIRE
SILL-1	CUSTOM CAST STONE	SILLSL-4S 4"Hx5"W	TO MATCH STONE-1
GUTTER-1	-	6" ALUMINUM TYPE 'K' W/ LEAF SCREEN AND 6" LEADERS	WHITE
TRIM-1	JAMES HARDIE	3/4" RUSTIC HARDIE TRIM BOARD 11.25"W	ARCTIC WHITE
TRIM-2	JAMES HARDIE	3/4" RUSTIC HARDIE TRIM BOARD 3.5"W	ARCTIC WHITE
TRIM-3	JAMES HARDIE	3/4" RUSTIC HARDIE TRIM BOARD 7.25"W	ARCTIC WHITE
HARDIE-1	JAMES HARDIE	HARDIE PANEL SIDING - SIERRA 8	COLOR: BOOTHBAY BLUE
SOFFIT-1	ROYAL BUILDING PRODUCTS	TRIPLE 3-1/3" DESIGNER SOFFIT	WHITE
COL-1	AZEK	3-PLUS-1 COLUMN WRAP	WHITE
ROOF-1	GAF	TIMBERLINE SHINGLE	FOXHOLLOW GRAY
ROOF-2	PAC-CLAD	STANDING SEAM	SLATE GREY
FAS-1	PLASTICLAD	VINYL FASCIA BOARD 10"W	WHITE

FINISH SCHEDULE NOTES:  
 1. G.C. SHALL VERIFY KNOX BOX MODEL(S) AND LOCATION(S) WITH AUTHORITY HAVING JURISDICTION PRIOR TO ORDERING AND INSTALLATION.  
 2. G.C. SHALL ENSURE ALL EXTERIOR FINISHES ARE INSTALLED AND FINISHED IN COMPLIANCE WITH MANUFACTURERS' WARRANTY REQUIREMENTS.



**Jarmel Kizel**  
 ARCHITECTS AND ENGINEERS INC.  
 42 OKNER PARKWAY  
 LIVINGSTON, NEW JERSEY 07039  
 TEL: 973-994-9669  
 FAX: 973-994-4069  
 www.jarmelkizel.com  
 Architecture  
 Engineering  
 Interior Design  
 Implementation Services

NJ State Board of Architects Authorization No. 161  
 NJ State Board of Engineers & Land Surveyors Authorization No. CA-278177

ISSUE			
NO.	DATE	DESCRIPTION	INT.

REVISION			
NO.	DATE	DESCRIPTION	INT.

**PRINCIPALS**  
 MATTHEW B. JARMEL, AIA, MBA  
 RICHARD A. JARMEL, PE  
 IRWIN H. KIZEL, AIA, PP  
**ARCHITECTS & ENGINEERS**  
 BEATRIZ BARRERES, RA  
 ARMEN B. BOGHOSIAN, PE  
 JEREMY D. BOYER, AIA  
 ANDRZEJ B. BRZDOWSKI, PE  
 SHANNON CROWNOVER, PE  
 ANDRE E. DIBI, PE  
 ANTHONY FACCHINO, PE, PLS, PP  
 GERARD P. GESARDO, PE  
 JONATHAN KURBIA, AIA  
 KAROLINA PODKANOWICZ, AIA  
 CHERYL SCHWEIKER, AIA  
 STEVEN J. VAZ, PE

Project:  
**THE GODDARD SCHOOL**  
 CASTAMERE DR  
 NOBLESVILLE, IN

Project Number: **GSLIN23-267** Scale: **1/8"=1'-0"**  
 Drawn By: **AM** Approved By: **MBJ**

Drawing Name:  
**PROPOSED ELEVATIONS**

Drawing Number:  
**SA-1.2**

Initial Date: 11/27/2023

ARCHITECT OF RECORD  
 MATTHEW B. JARMEL, AIA, MBA  
0616C 11/03/2019



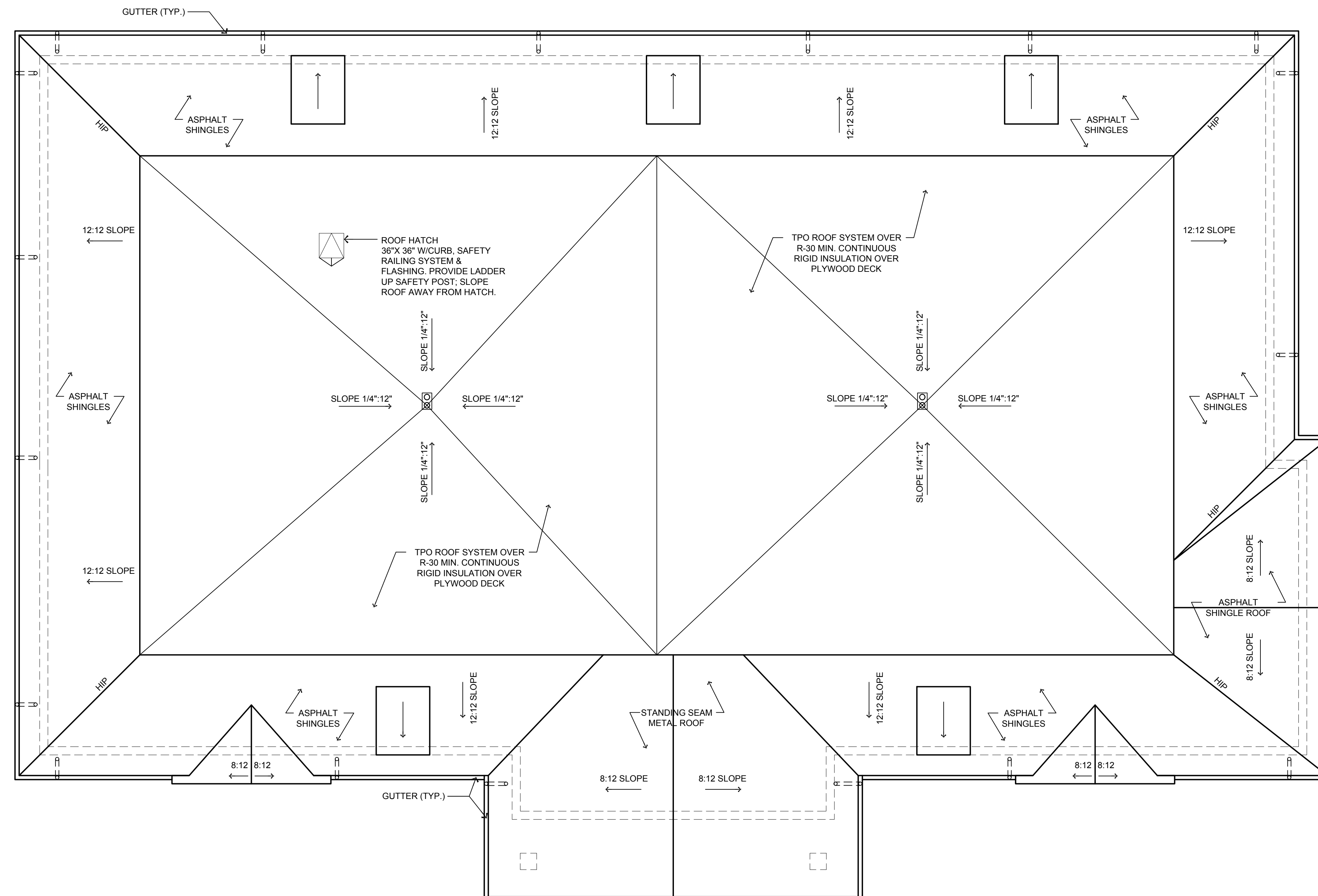
**Jarmel Kizel**

ARCHITECTS AND ENGINEERS INC.  
42 OKNER PARKWAY  
LIVINGSTON, NEW JERSEY 07039  
TEL: 973-994-9669  
FAX: 973-994-4069

www.jarmelkizel.com

Architecture  
Engineering  
Interior Design  
Implementation Services

NJ State Board Of Architects Authorization No. 161  
NJ State Board Of Engineers & Land Surveyors Authorization No. GA-278177



**1 PROPOSED ROOF PLAN**  
SCALE : 1/8" = 1'-0"

**ISSUE**

NO.	DATE	DESCRIPTION	INT.

**REVISION**

NO.	DATE	DESCRIPTION	INT.

**PRINCIPALS**

- MATTHEW B. JARMEL, AIA, MBA
  - RICHARD A. JARMEL, PE
  - IRWIN H. KIZEL, AIA, PP
- ARCHITECTS & ENGINEERS**
- HEATRIZ BARRERES, RA
  - ARMEN B. BHOSSIAN, PE
  - JEREMY D. BOYER, AIA
  - ANDRZEJ B. BRZOZOWSKI, PE
  - SHANNON CROWNOVER, PE
  - ANDRZEJ E. DZIEL, PE
  - ANTHONY FACCHINO, PE, PLS, PP
  - GERARD P. GESARDO, PE
  - JONATHAN KUTYBSKA, AIA
  - KAROLINA PODKONOWICZ, AIA
  - CHERYL SCHWEIKER, AIA
  - STEVEN J. VAZ, PE

Project:

**THE GODDARD SCHOOL**  
CASTAMERE DR  
NOBLESVILLE, IN

Project Number:

GSLIN23-267

Scale:

1/8"=1'-0"

Drawn By:

AM

Approved By:

MBJ

Drawing Name:

**PROPOSED ROOF PLAN**

Drawing Number:

**SA-1.3**

Initial Date: 11/27/2023

ARCHITECT OF RECORD

MATTHEW B. JARMEL, AIA, MBA  
REG. NO. 11802219



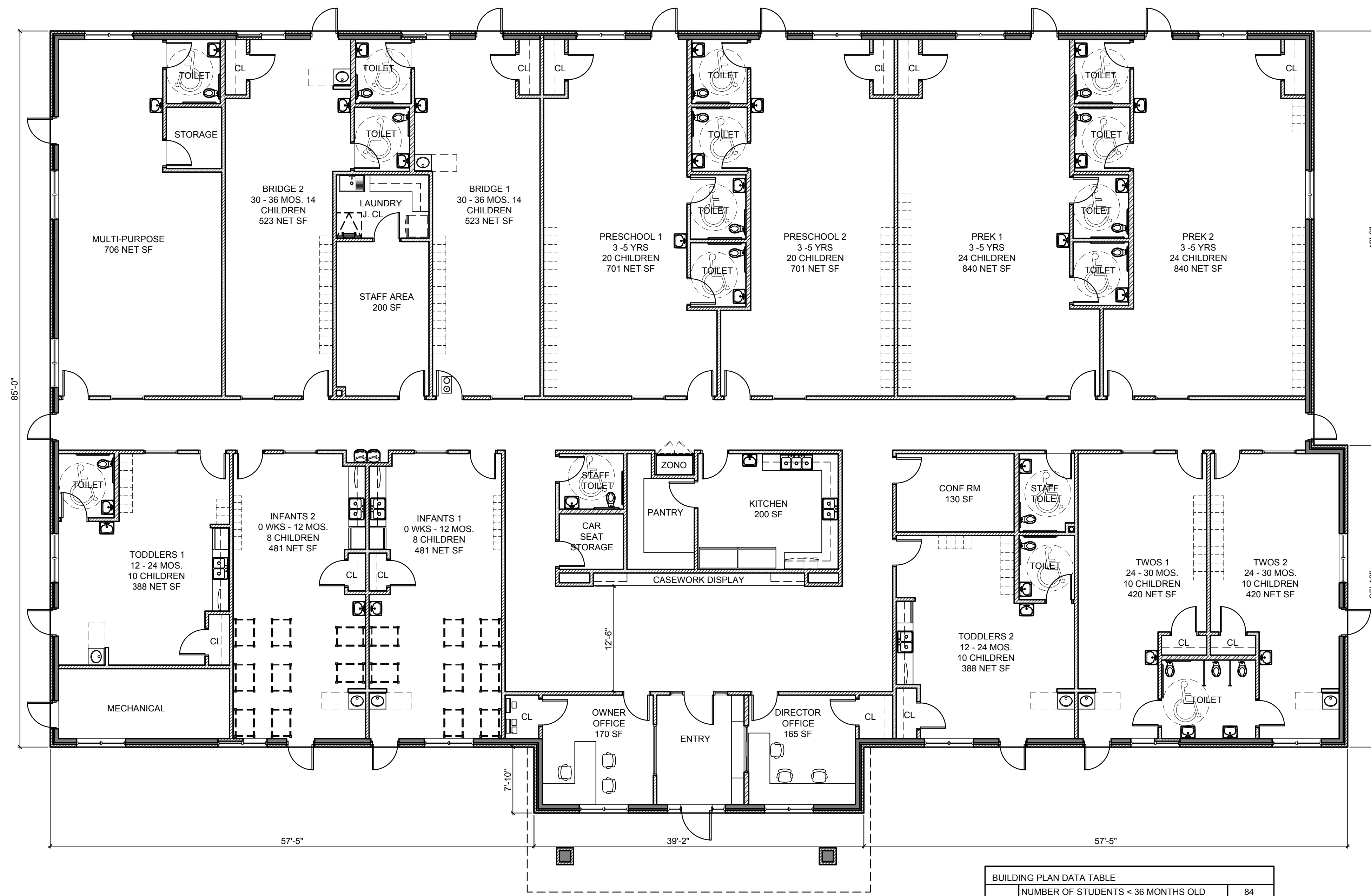
# Jarmel Kizel

ARCHITECTS AND ENGINEERS INC.  
42 OKNER PARKWAY  
LIVINGSTON, NEW JERSEY 07039  
TEL: 973-994-9669  
FAX: 973-994-4069

www.jarmelkizel.com

Architecture  
Engineering  
Interior Design  
Implementation Services

NJ State Board Of Architects Authorization No. 161  
NJ State Board Of Engineers & Land Surveyors Authorization No. GA-278177



**1 PROPOSED FLOOR PLAN**  
SCALE : 1/8" = 1'-0"

BUILDING PLAN DATA TABLE	
NUMBER OF STUDENTS < 36 MONTHS OLD	84
NUMBER OF STUDENTS > 36 MONTHS OLD	88
TOTAL STUDENTS	172
TOTAL STAFF	24
TOTAL OCCUPANCY	196

TOTAL BUILDING AREA: 13,200 SF

### ISSUE

NO.	DATE	DESCRIPTION	INT.

### REVISION

NO.	DATE	DESCRIPTION	INT.

### PRINCIPALS

MATTHEW B. JARMEL, AIA, MBA  
RICHARD A. JARMEL, PE  
IRWIN H. KIZEL, AIA, PP

### ARCHITECTS & ENGINEERS

HEATRIZ BARRERES, RA  
ARMEN B. BOHOSIAN, PE  
JEREMY D. BOYER, AIA  
ANDRZEJ B. BRZOSOWSKI, PE  
SHANNON CROWNOVER, PE  
ANDRZEJ E. DIBL, PE  
ANTHONY FACCHINO, PE, PLS, PP  
GERARD P. GESARDO, PE  
JONATHAN KUTYBA, AIA  
KAROLINA PODKANOWICZ, AIA  
CHERYL SCHWEIKER, AIA  
STEVEN J. VAZ, PE

Project:

**THE GODDARD SCHOOL**  
CASTAMERE DR  
NOBLESVILLE, IN

Project Number:

GSLIN23-267

Scale:

1/8"=1'-0"

Drawn By:

CS

Approved By:

MBJ

Drawing Name:

**PROPOSED FLOOR PLANS**

Drawing Number:

**SA-1.1**

Initial Date: 11/05/2024

ARCHITECT OF RECORD

MATTHEW B. JARMEL, AIA, MBA

REG. NO. 11802219