



# Union Chapel Road Preliminary Design Meeting

---

City of Noblesville

Department of Engineering

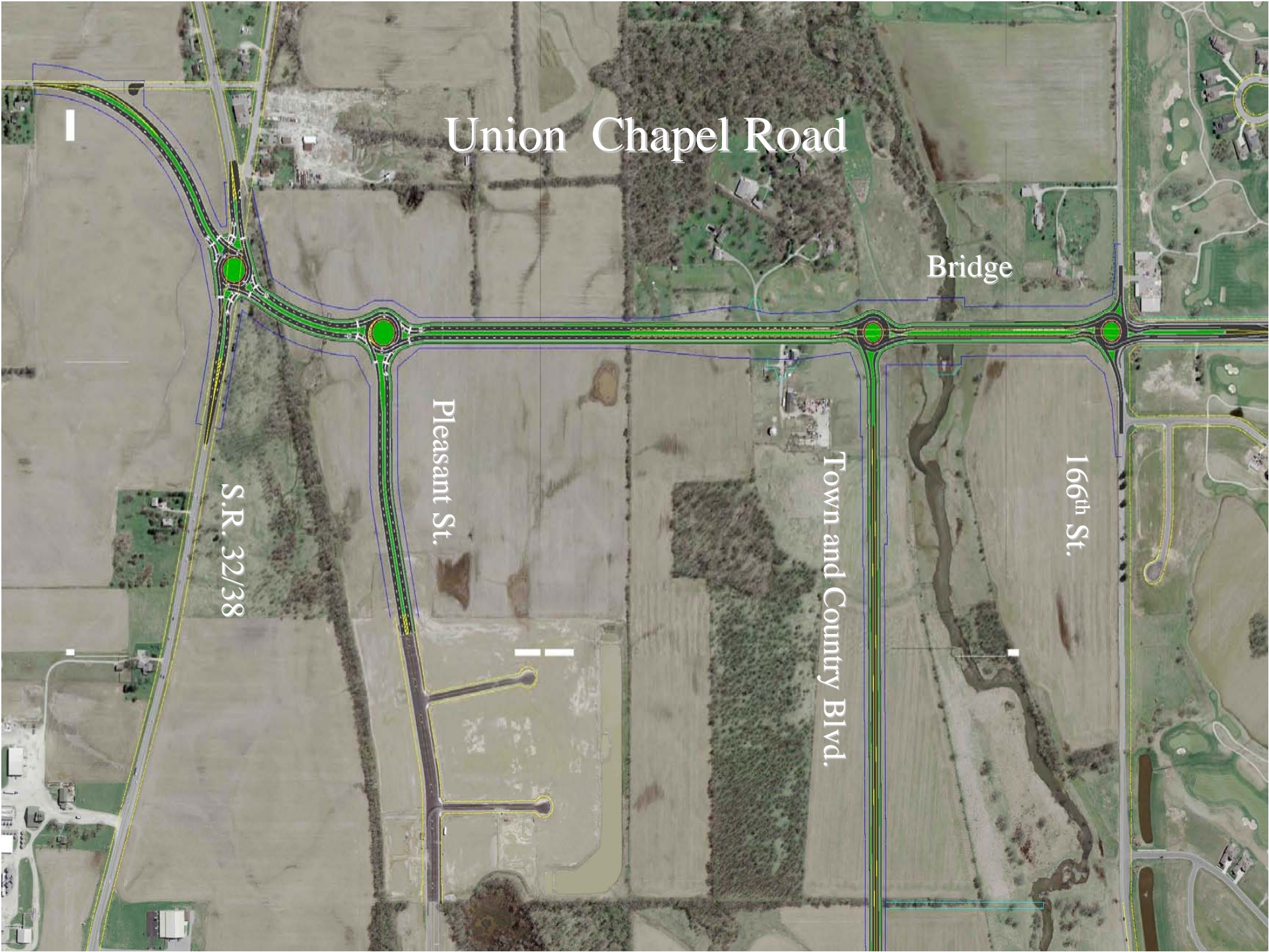
August 27<sup>th</sup>, 2008



# Purpose

---

- Inform Public on Progress of Design Prior to Land Acquisition
- Advise on Current Scope and Schedule
- Answer Questions



# Union Chapel Road

Bridge

S.R. 32/38

Pleasant St.

Town and Country Blvd.

166th St.



# Scope of Current Design Phase

---

- Four Lane Cross Section with Medians from 166<sup>th</sup> to S.R. 32
- New Arch Bridge over Stony Creek
- Roundabout Intersections
  - 166<sup>th</sup> St.
  - Town and Country Blvd.
  - Pleasant Street
  - State Road 32/38 (Being Negotiated with INDOT)
- Extension of Town and Country Blvd. and Pleasant Street
- 8' Trails adjacent to roadways
- Landscaping and Lighting
- Pedestrian Crossings Considered During Design
  - Under Union Chapel for Midland Trace at Pleasant Street
  - Under Union Chapel at Stony Creek
  - Under Union Chapel for Cart Crossing at Sagamore



# Traffic Models

---

- The City is currently working with the State of Indiana's Department of Transportation to Analyze the Feasibility of a Roundabout at Union Chapel Road and S.R. 32/38.
- Initial Alignment for S.R. 32
  - ..\..\..\Civil 3D Projects\Union Chapel\Union Chapel.syn
- Alternate Alginment for S.R. 32
  - ..\..\..\Civil 3D Projects\Union Chapel\Union Chapel Alt.syn



# Current Project Information

---

- Cost
- Progress Dependent Upon:
  - ROW Acquisition
  - Coordination with INDOT Project on S.R. 32
  - Environmental Permitting and Assessment for Proposed Bridge
- Schedule (One or all of the following by Summer 2009)
  - First Section from 166<sup>th</sup> to Pleasant Street
  - Second Section – Pleasant Street Segment to S.R. 32
  - Final Phase – Town and Country (Funding Dependent)

# Amenities

---

- Trails
- Crossings
- Landscaping
- Lighting



# Questions or Comments

