

City of Noblesville – Long-term Control Plan & Maple Avenue Project

Design Advisory Committee Meeting
February 25th, 2009



AGENDA

- Welcome & Introductions
- Sidewalk Alternatives Update/Review
- Rain Garden & Infiltration Trench Elements
- Tree/Plant Selection & Patterning
- Other Design Elements
- Future Discussions

Anticipated Schedule

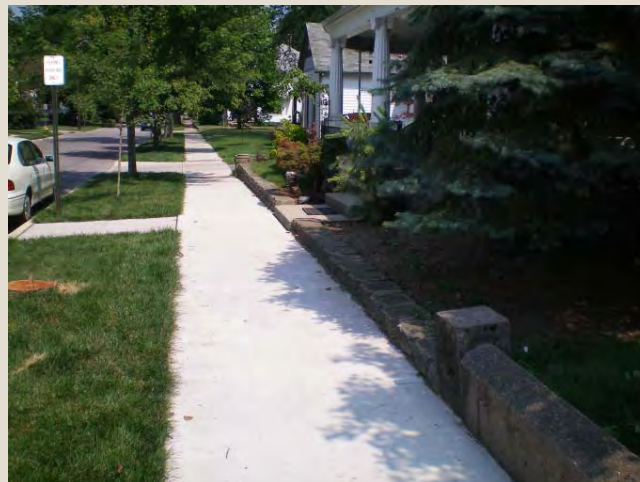
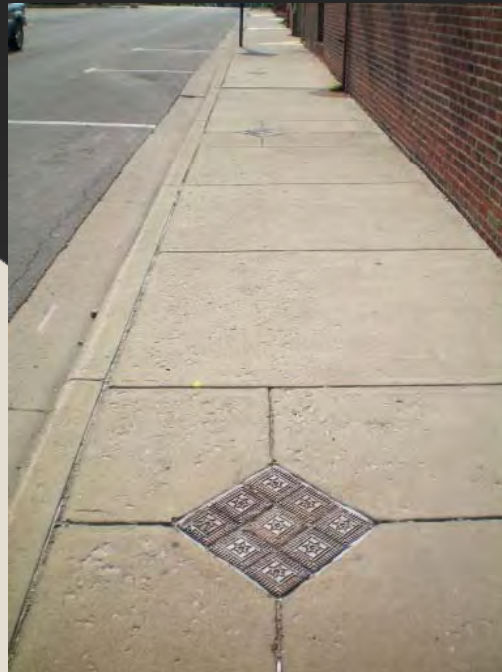
- Design Advisory Committee Mtgs – Winter 2009
- Bid Requests – Spring 2009
- Construction Begins – Early Summer 2009
- Construction Complete – Fall 2010



Sidewalk Infrastructure

Maple Avenue Project
Elements

Sidewalks Alternatives



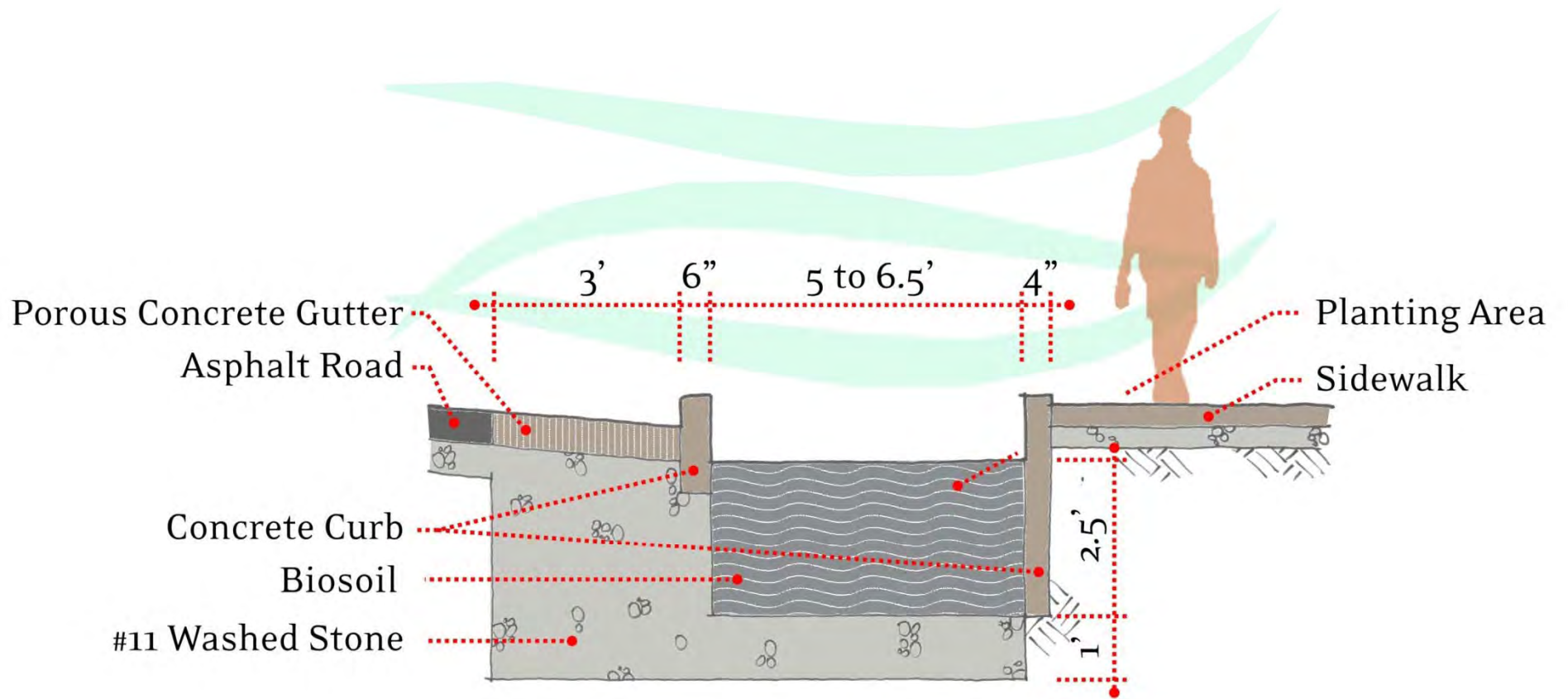


Stormwater Management & Rain Gardens

Maple Avenue Project
Elements







Maple Ave Rain Gardens Criteria

- Current tree lawn exists?
- Right-of-way available?
- New/recent sidewalk infrastructure in place?
- Large slope between sidewalk and curb?



Infiltration Trenches



Porous Concrete Gutter

Asphalt Road

Concrete Curb

#11 Washed Stone

3'

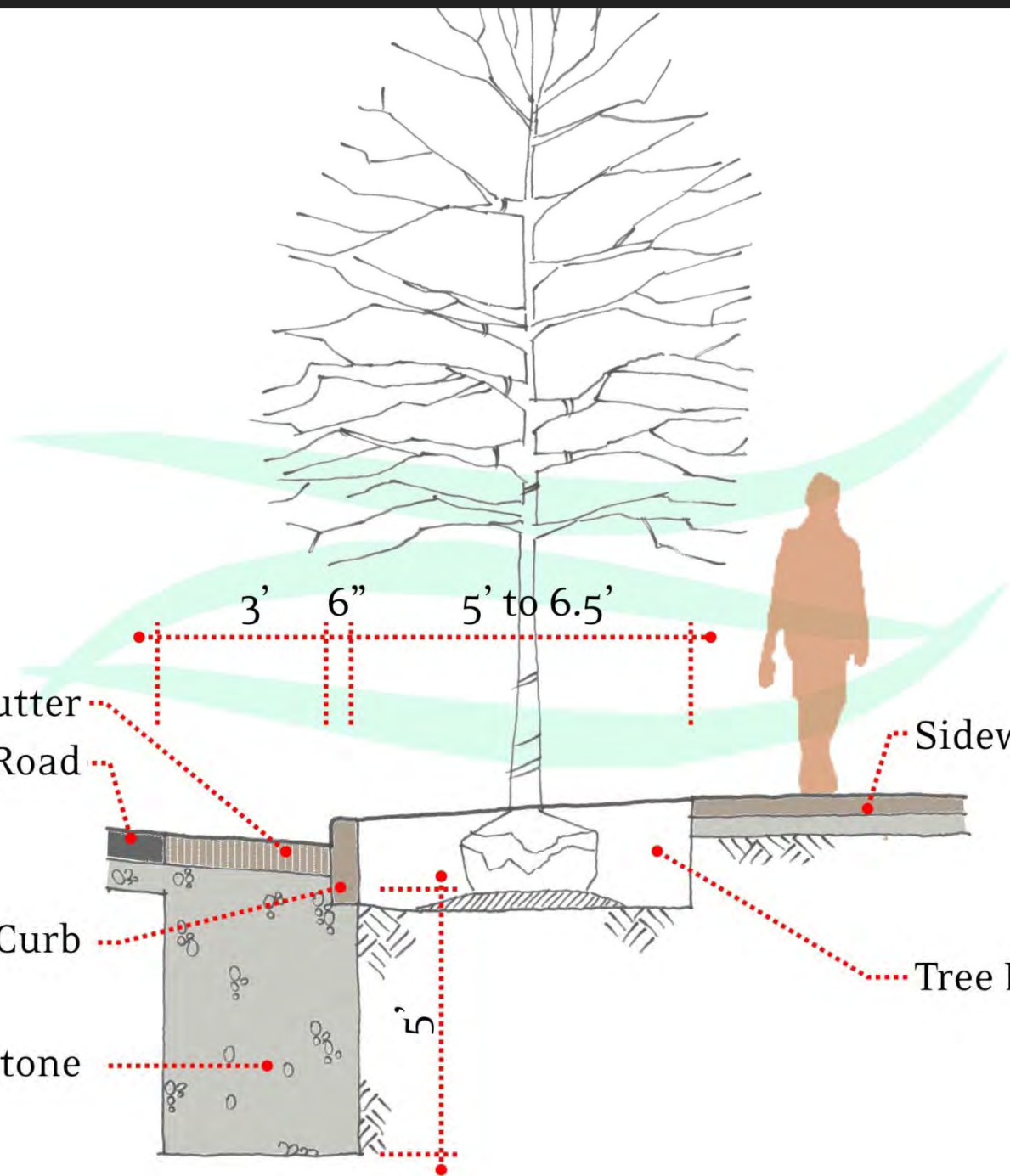
6"

5' to 6.5'

Sidewalk

Tree Lawn

5'





Tree/Plant Selection & Patterning

Maple Avenue Project
Elements



Height: 50'

Width: 30'

Rate: Medium to Fast

Form: Rounded Oval

Fall Color: Red to Orange

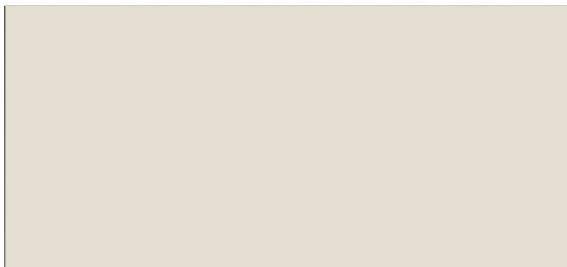


Cultural Information



Freeman Maple

Acer x freemanii 'Autumn Blaze'



Height: 50'

Width: 35'

Rate: Medium to Fast

Form: Rounded

Fall Color: Red



Cultural Information



Red Maple

Acer rubrum 'October Glory'



Height: 40-50'

Width: 20-30'

Rate: Slow to Medium

Form: Pyramidal to Rounded

Fall Color: Yellow to Red to Purple

Cultural Information

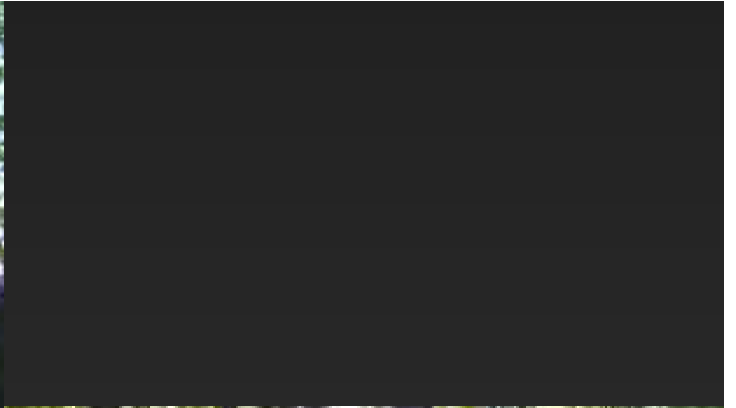


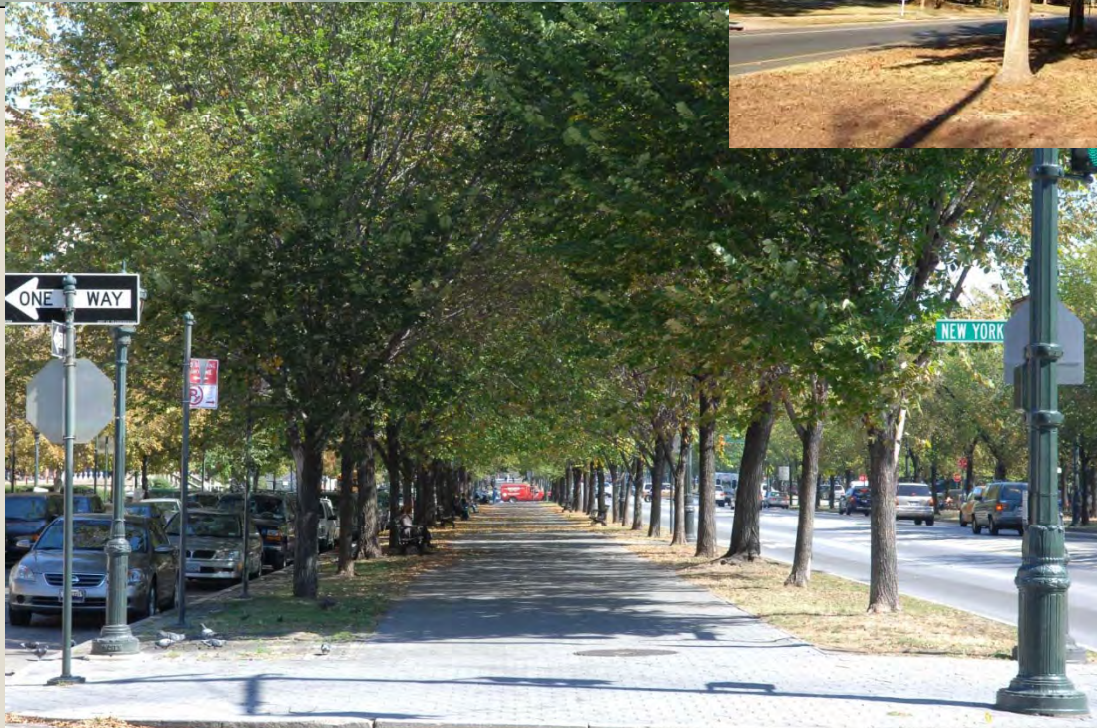
Black Tupelo

Nyssa sylvatica









Rain Garden Plant Selection





Lighting & Signage Update

Maple Avenue Project
Elements

Ways to Stay Up-to-date

- ◉ Neighborhood Mailing(s)
- ◉ Public Meeting(s)
- ◉ News Releases
- ◉ Project Webpage
 - > www.cityofnoblesville.org/wastewater

Questions, Additional Input...

