

1800
(5)

200300118631
Filed for Record in
HAMILTON COUNTY, INDIANA
JENNIFER J HAYDEN
11-19-2003 At 03:21 pm.
ORDINANCE 18.00

ORDINANCE NO. 72-10-03

AN ORDINANCE TO AMEND ORDINANCE ##37-5-03 AN ORDINANCE
ESTABLISHING STANDARDS FOR THE NOBLE WEST PLANNED DEVELOPMENT IN THE
CITY OF NOBLESVILLE, HAMILTON COUNTY, INDIANA

An ordinance to amend the Ordinance # 37-5-03 the development standards for the Noble West Planned Development for the City of Noblesville, Hamilton County, Indiana, adopted by the City of Noblesville Common Council on June 10, 2003 and recorded as Instrument # 200300058881 in the Hamilton County Recorder's Office, on June 19, 2003 and,

WHEREAS, the Plan Commission of the City of Noblesville has conducted a public hearing on Plan Commission Docket #03N-15-1723 as required by law in regard to the amendment of the retail layout Exhibit B for that portion of the Noble West Planned Development as described in Exhibit A and located on the east side of Hazel Dell Parkway and north of 146th Street and as sent a favorable recommendation to the Common Council adopted on the 20th day of October, 2003 with a vote of 10 ayes and 0 nays; and

WHEREAS, the remaining portions of Ordinance # 37-5-03 will remain as adopted in regard to the development standards including the architectural standards for all single-family development, multi-family development, and office/retail development,

NOW, THEREFORE, BE IT ORDAINED by the Common Council of the City of Noblesville, Hamilton County, Indiana, that Ordinance #37-05-03 is hereby amended as per attachment B with a landscaping buffer of 20-FT along 146th Street,y preliminarily amended as follows:

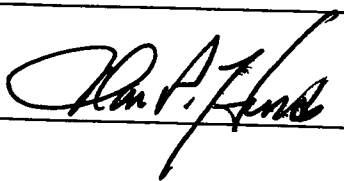
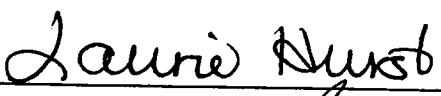


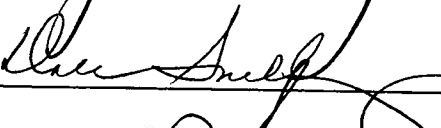
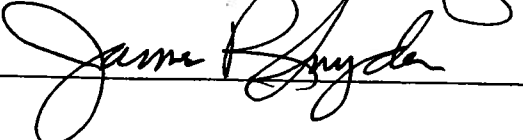
Section 1. This ordinance shall be in full force and effect from and upon its adoption in accordance with the law.

Section 2. Upon motion duly made and seconded, this Ordinance was fully passed by the members of the Common Council this 11th day of November, 2003.

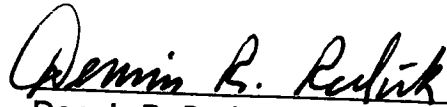
COMMON COUNCIL
CITY OF NOBLESVILLE

BY: AYE

NAY

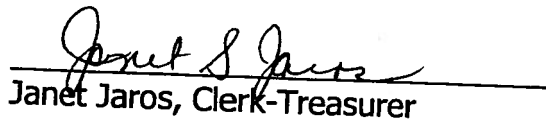
_____	Rex Dillinger	_____
_____	Alan Hinds	
	Laurie Hurst	_____
	Jack Martin	_____
	Terry Busby	_____
	Dale Snelling	_____
	James Snyder	_____

APPROVED and signed by the Mayor of the City of Noblesville, Hamilton County,
Indiana this 11th day of November, 2003.



Dennis R. Redick, Mayor
City of Noblesville

ATTEST:


Janet Jaros, Clerk-Treasurer

Prepared by Mike Howard, Noblesville City Attorney

ALL EXHIBITS ARE ON FILE AND MAY BE VIEWED IN THE CITY OF NOBLESVILLE
CLERK-TREASURER'S OFFICE.



OLSSON ASSOCIATES
ENGINEERS • PLANNERS • SCIENTISTS • SURVEYORS

A part of Section 15, Township 18 North, Range 4 East, of the Second Principal Meridian, Hamilton County, Indiana, being more particularly described as follows:

Beginning at the northwest corner of Northeast Quarter of Section 16, Township 18 North, Range 4 East; thence South 89 degrees 48 minutes 20 seconds East along the north line of said Quarter a distance of 1339.65 feet to the northeast corner of the West Half of the said Quarter; thence South 00 degrees 00 minutes 19 seconds West along the east line of said Half a distance of 162.58 feet; thence South 89 degrees 48 minutes 20 seconds East parallel with said north line a distance of 450.21 feet; thence South 00 degrees 00 minutes 21 seconds West a distance of 188.40 feet; thence South 28 degrees 22 minutes 27 seconds East a distance of 145.29 feet; thence South 89 degrees 48 minutes 18 seconds East a distance of 157.94 feet; thence North 00 degrees 00 minutes 21 seconds East a distance of 316.00 feet; thence South 89 degrees 48 minutes 20 seconds East parallel with said north line a distance of 77.29 feet; thence South 00 degrees 00 minutes 22 seconds West a distance of 216.83 feet; thence South 26 degrees 49 minutes 29 seconds East a distance of 111.17 feet; thence North 89 degrees 13 minutes 39 seconds East a distance of 135.51 feet; thence South 00 degrees 00 minutes 28 seconds East a distance of 15.74 feet to a point hereinafter referred to as Point "A"; thence South 79 degrees 38 minutes 43 seconds East a distance of 477.22 feet to a point which lies 70.00 feet easterly by perpendicular measure to the west line of the Northwest Quarter of Section 15, Township 18 North, Range 4 East; thence South 00 degrees 00 minutes 21 seconds West parallel with said west line a distance of 2070.43 feet; thence South 00 degrees 10 minutes 25 seconds West parallel with and 70.00 feet easterly from the west line of the Southwest Quarter of said Section 15 a distance of 1317.44 feet to the **Point of Beginning**; thence South 90 degrees 00 minutes 00 seconds East a distance of 2.30 feet to a curve having a radius of 1227.00 feet, the radius point of which bears North 00 degrees 00 minutes 00 seconds East; thence northeasterly along said curve an arc distance of 538.30 feet to a point which bears South 25 degrees 08 minutes 11 seconds East from said radius point; thence North 64 degrees 51 minutes 49 seconds East a distance of 349.52 feet; thence South 26 degrees 45 minutes 37 seconds East a distance of 875.08 feet; thence South 00 degrees 00 minutes 04 seconds East a distance of 184.61 feet; thence South 45 degrees 00 minutes 00 seconds East a distance of 319.63 feet; thence South 45 degrees 00 minutes 00 seconds West a distance of 29.18 feet; thence South 39 degrees 40 minutes 38 seconds East a distance of 59.61 feet to a curve having a radius of 150.00 feet, the radius point of which bears South 50 degrees 19 minutes 22 seconds West; thence Southeasterly along said curve an arc distance of 104.34 feet to a point which bears South 89 degrees 49 minutes 27 seconds East from said radius point; thence South 00 degrees 10 minutes 33 seconds West a distance of 172.75 feet to a point which lies 70.00 feet northerly by perpendicular measure to the south line of said Quarter; thence South 89 degrees 54 minutes 18 seconds West parallel with said south line a distance of 1085.58 feet; thence North 00 degrees 05 minutes 42 seconds West perpendicular to said south line a distance of 10.00 feet; thence South 89 degrees 54

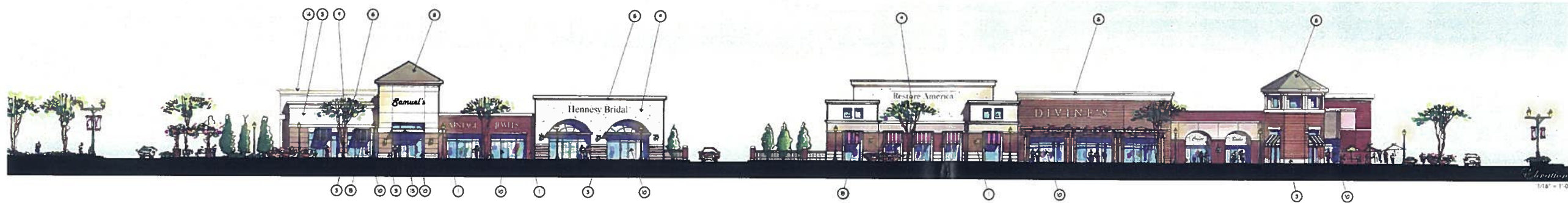


OLSSON ASSOCIATES
ENGINEERS • PLANNERS • SCIENTISTS • SURVEYORS

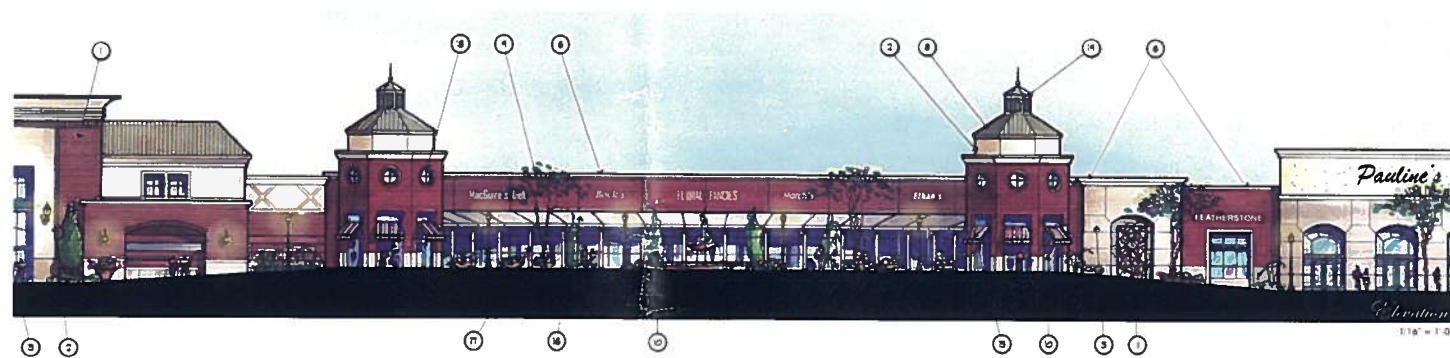
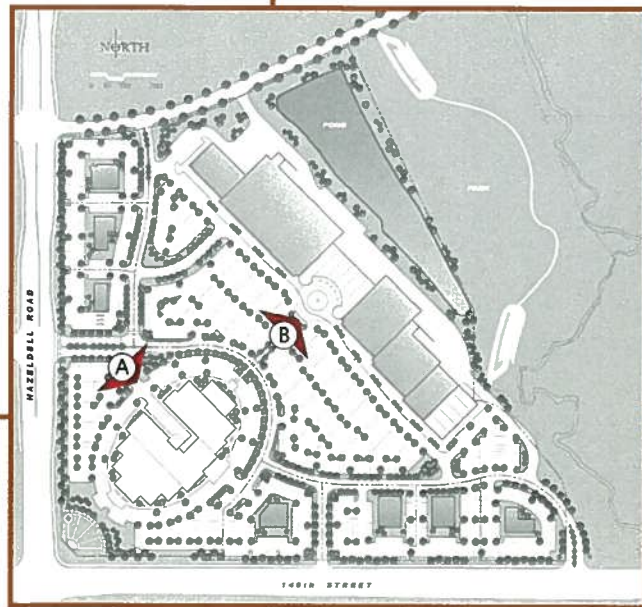
minutes 18 seconds West parallel with said south line a distance of 374.61 feet; thence North 44 degrees 57 minutes 39 seconds West a distance of 70.55 feet to a point which lies 75.00 feet easterly by perpendicular measure to the west line of said Quarter; thence North 00 degrees 10 minutes 25 seconds East parallel with said west line a distance of 369.65 feet; thence North 89 degrees 49 minutes 35 seconds West perpendicular to said west line a distance of 5.00 feet; thence North 00 degrees 10 minutes 25 seconds East parallel with said west line a distance of 835.65 feet to the **Point of Beginning**.
Containing 39.0 acres, more or less.



Hazel Dell
CROSSING



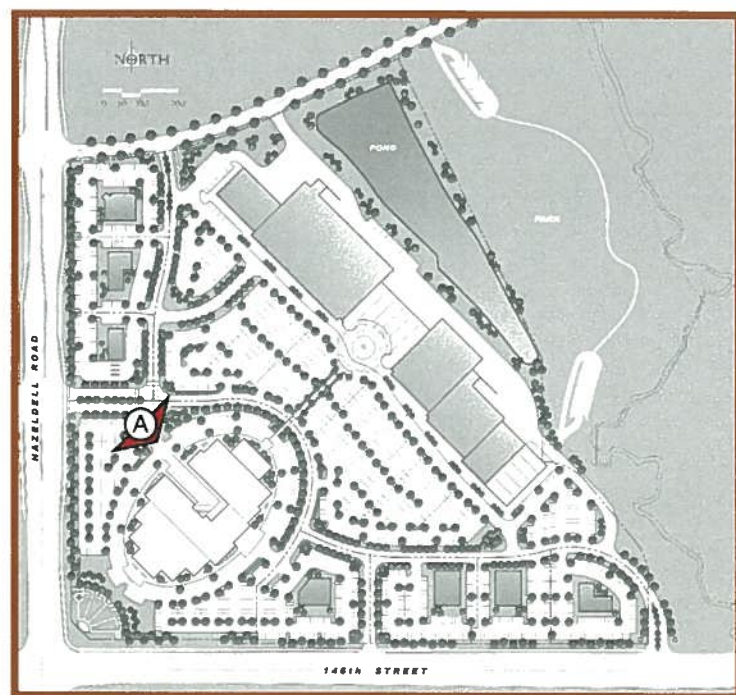
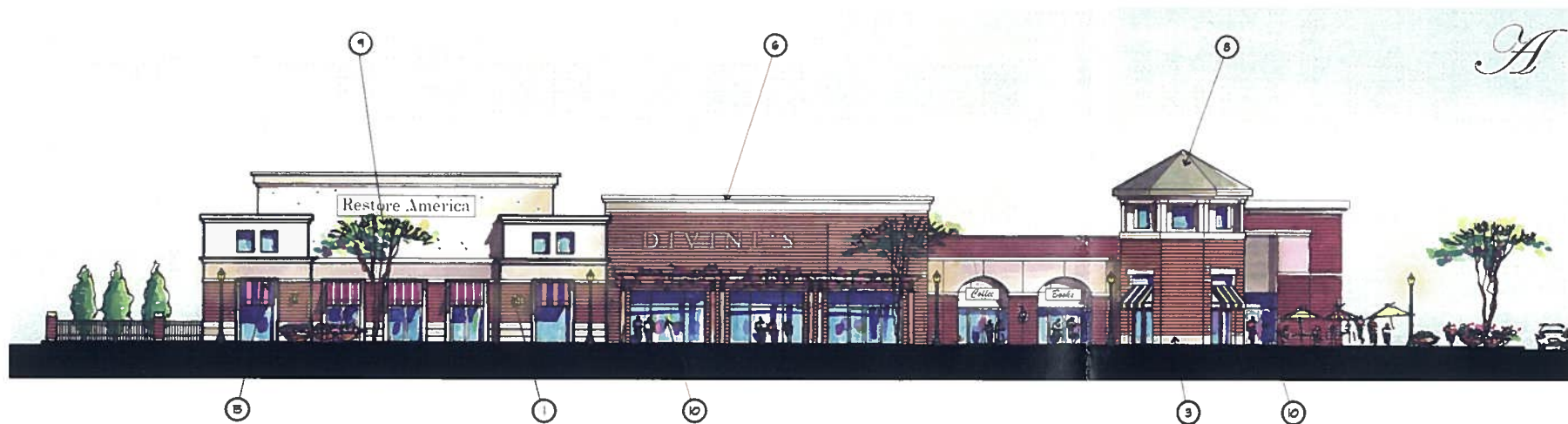
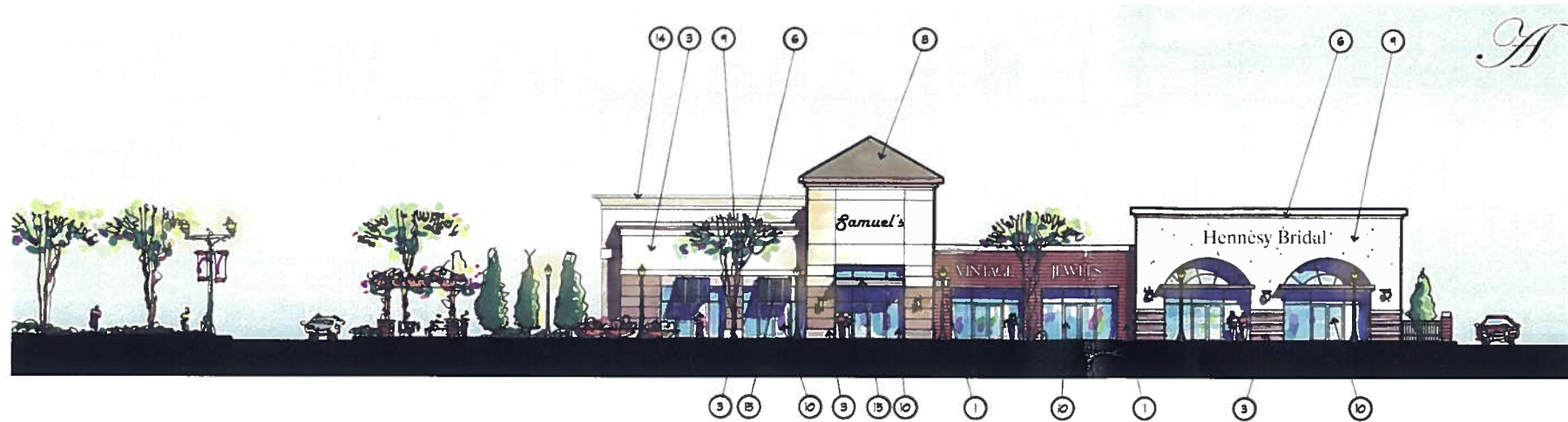
Site Plan Key



Finish Materials

- 1 Brick Finish
- 2 Stucco Finish
- 3 Cast Stone
- 4 Light Fixture
- 5 Typical Development Medallion
- 6 Architectural Cornice
- 7 Architectural Trim
- 8 Architectural Metal Roofing
- 9 Signage Area
- 10 Aluminum Glazing System
- 11 Metal Screening Element
- 12 Metal Linel
- 13 Soldier/Rowlock Accent
- 14 Roof Line Beyond
- 15 Trellis
- 16 Decorative Column
- 17 Faux Window
- 18 Faux Window
- 19 Decorative Louver
- 20 Cast Stone Cap
- 21 Brick Accent Stripe
- 22 Metal Sign Band
- 23 Metal Fence

Hazeldell
CROSSING



Site Plan Key

Hazeldell
CROSSING

Finish Materials

- ① Brick Finish
- ② Stucco Finish
- ③ Cast Stone
- ④ Light Fixture
- ⑤ Typical Development Medallion
- ⑥ Architectural Cornice
- ⑦ Architectural Trim
- ⑧ Architectural Metal Roofing
- ⑨ Signage Area
- ⑩ Aluminum Glazing System
- ⑪ Metal Screening Element
- ⑫ Metal Lintel
- ⑬ Soldier/Rowlock Accent
- ⑭ Roof Line Beyond
- ⑮ Trellis
- ⑯ Decorative Column
- ⑰ Faux Window
- ⑱ Faux Window
- ⑲ Decorative Louver
- ⑳ Cast Stone Cap
- ㉑ Brick Accent Stripe
- ㉒ Metal Sign Band
- ㉓ Metal Fence



Know Better Architecture.

Architects
Interiors
Planners