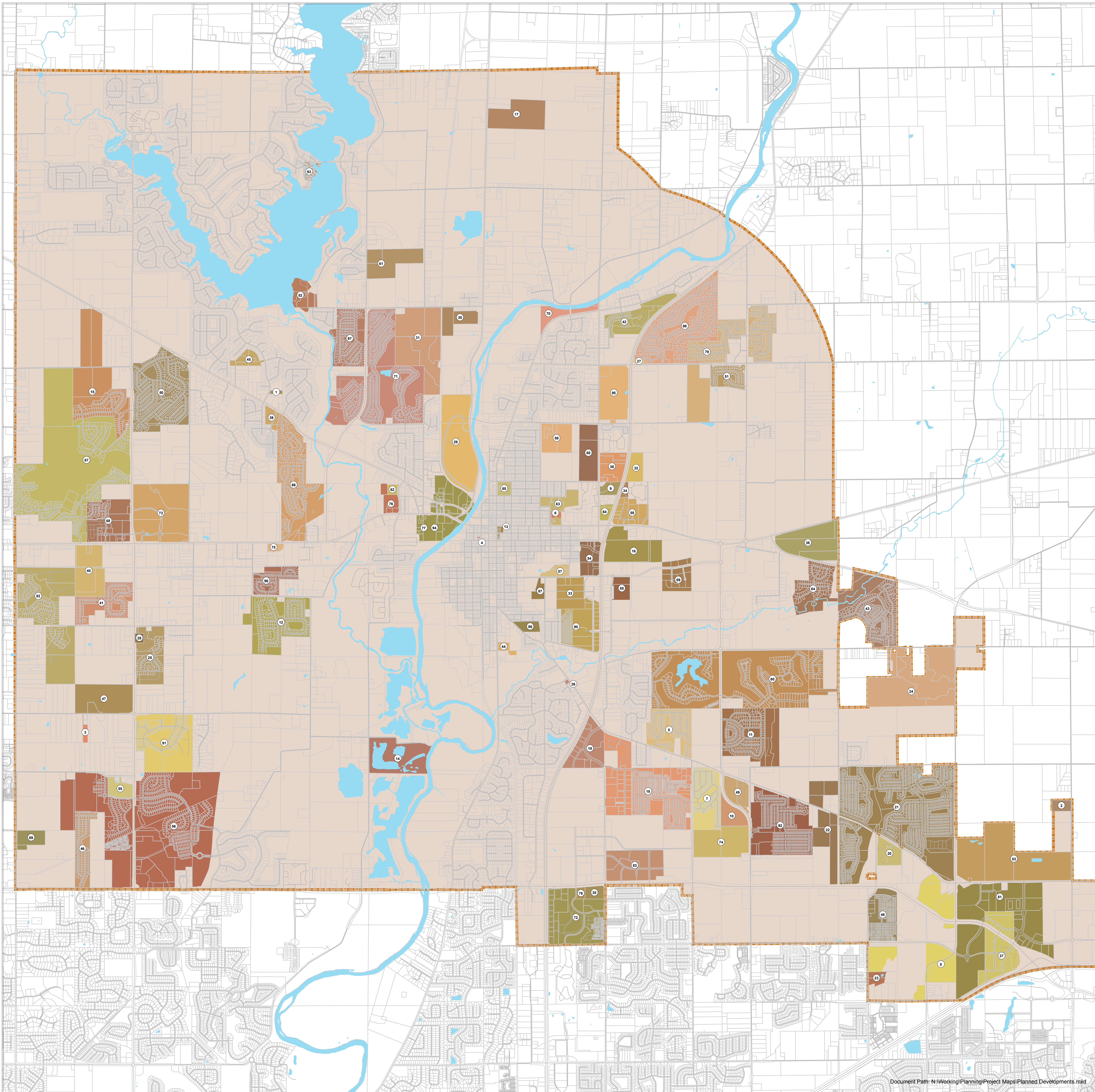


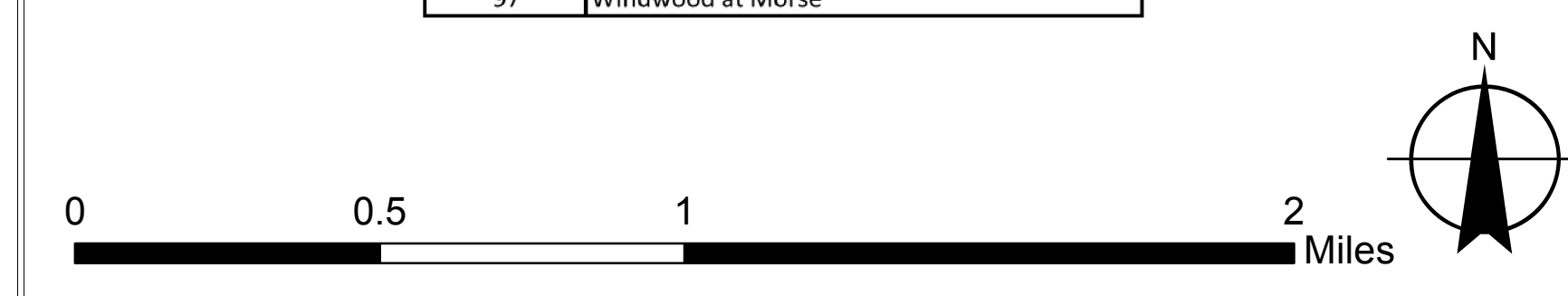


City of Noblesville Planned Developments

Prepared by the City of Noblesville Planning Department
Created: 7/25/2013
Map 1 of 1



Number	Name
1	#2 Fire Station
2	#7 Fire Station
3	5325 161st St
4	8th & Cherry Parking Lot
5	Arbor Grove
6	Boys and Girls Club
7	Brighton Knoll
8	Bubbenzer
9	C & E Rental Services
10	Chapel Pointe
11	Chapel Woods
12	Cherry Tree Meadows
13	City Hall and Public Safety
14	City of Westfield Public Training Facility
15	Conner Crossing
16	Conner Pointe
17	Cumberland Farms Industrial
18	Cumberland Pointe
19	Cumberland Pointe Marketplace
20	Deer Chase Apartments
21	Deer Path
22	Drummond Industrial Park
23	Dunn
24	Eastside Park
25	Essex
26	Fire Station #3
27	Fire Station #5
28	Fire Station #6
29	Forest Park
30	Forest Park Soccer Fields
31	Fox Prairie
32	Hamilton County Communication Tower
33	Hamilton County Fairgrounds
34	Hamilton County Foundation Dr
35	Hamilton County Healthcare Campus
36	Hamilton County Judicial Center
37	Hamilton Town Center
38	Hanlets @ Stony Creek
39	Harbour Manor
40	Hazel Dell Elementary
41	Hazel Dell Woods
42	Highland Prairie
43	Highland Prairie at Stony Creek
44	Highway Department
45	Hinkle Creek Elementary
46	Kingsley
47	Lake Forest of Noblesville
48	Marilyn Ridge
49	Meredith Meadows
50	Mill Grove
51	Monarch Springs
52	Morse Beach Park
53	Music Center
54	Noble Creek Shoppes
55	Noble Crossing Elementary
56	Noble West
57	Noblesville Commerce Park
58	Noblesville Commons
59	Noblesville Freshman Center
60	Noblesville High School
61	Noblesville Intermediate
62	Noblesville Medical Arts
63	Noblesville Middle School
64	Noblesville Public Library
65	North Elementary
66	Oakmont
67	Pebble Brook
68	Pebble Brook Village
69	Pleasant Street Commercial Park
70	Potter's Bridge Park
71	Prairie Crossing
72	Prairie Lakes
73	Promenade
74	Promise Road Elementary School
75	Randall & Roberts
76	River Edge Shoppes
77	Riverview Hospital
78	Riverview Medical Arts
79	Roudebrush Farms
80	Sagamore
81	Saxony
82	Slater Farms
83	Smithfield Business Park
84	Stoney Creek Estates
85	Stoney Creek Marketplace
86	Stony Creek Elementary
87	Street Department
88	The Meadows
89	Thurston
90	Town & Country
91	Twin Oaks
92	Waterman Farms
93	Waterscape
94	West Gateway
95	White River Elementary
96	Willow Lake
97	Windwood at Morse



Every effort has been made to ensure the accuracy, correctness and timeliness of the materials presented. The City of Noblesville assumes no liability for damages incurred directly or indirectly as a result of incomplete, incorrect or omitted information, even if the City has advised of the possibility that the information may not be accurate. The user of this information assumes all liability for their dependence on this information and assumes responsibility for the information. Areas depicted by these digital products are approximate, and are not necessarily accurate to mapping, surveying, or engineering standards. Detailed questions should be directed to the City of Noblesville at (317) 773-4614.