

NOBLESVILLE FIRE DEPARTMENT



CODE ENFORCEMENT DIVISION

135 S. 9th Street • Noblesville, IN 46060

Telephone: 317-776-6336 • Fax: 317-776-6376

www.cityofnoblesville.org/fire • fireinspections@noblesville.in.us

Group R-1 (Hotel & Motel) Affidavit

Due to the special nature of the hazards in a hotel or motel, there are special requirements as detailed in the code sections below. First, because people in hotels are typically not familiar with their surroundings, the code requires that evacuation diagrams be posted in each room on the back of the door. Second, because people are often asleep in a hotel or motel, smoke alarms are required in all sleeping rooms, as the occupants may not be awake to detect a fire in the area. Finally, doors to the rooms are required to close and latch automatically. In the event of a fire, this delays the spread of fire and smoke from the fire room into the hallway, or vice versa, to afford occupants more time to safely escape the fire.

Due to the fact that it is impossible to check each room to confirm these requirements are met during an inspection, signing this affidavit confirms that all rooms do meet the code requirements.

408.8.1 Evacuation diagrams. A diagram in accordance with Appendix A-1 depicting two evacuation routes shall be posted on or immediately adjacent to every required egress door from each hotel or motel sleeping unit.

703.2.3 Door operation. Swinging fire doors shall close from the full-open position and latch automatically. The door closer shall exert enough force to close and latch the door from any partially open position.

907.2.11.1 Group R-1. Single- or multiple-station smoke alarms shall be installed in all of the following locations in Group R-1:

1. In sleeping areas.
2. In every room in the path of the means of egress from the sleeping area to the door leading from the sleeping unit.
3. In each story within the sleeping unit, including basements. For sleeping units with split levels and without an intervening door between the adjacent levels, a smoke alarm installed on the upper level shall suffice for the adjacent lower level provided that the lower level is less than one full story below the upper level.

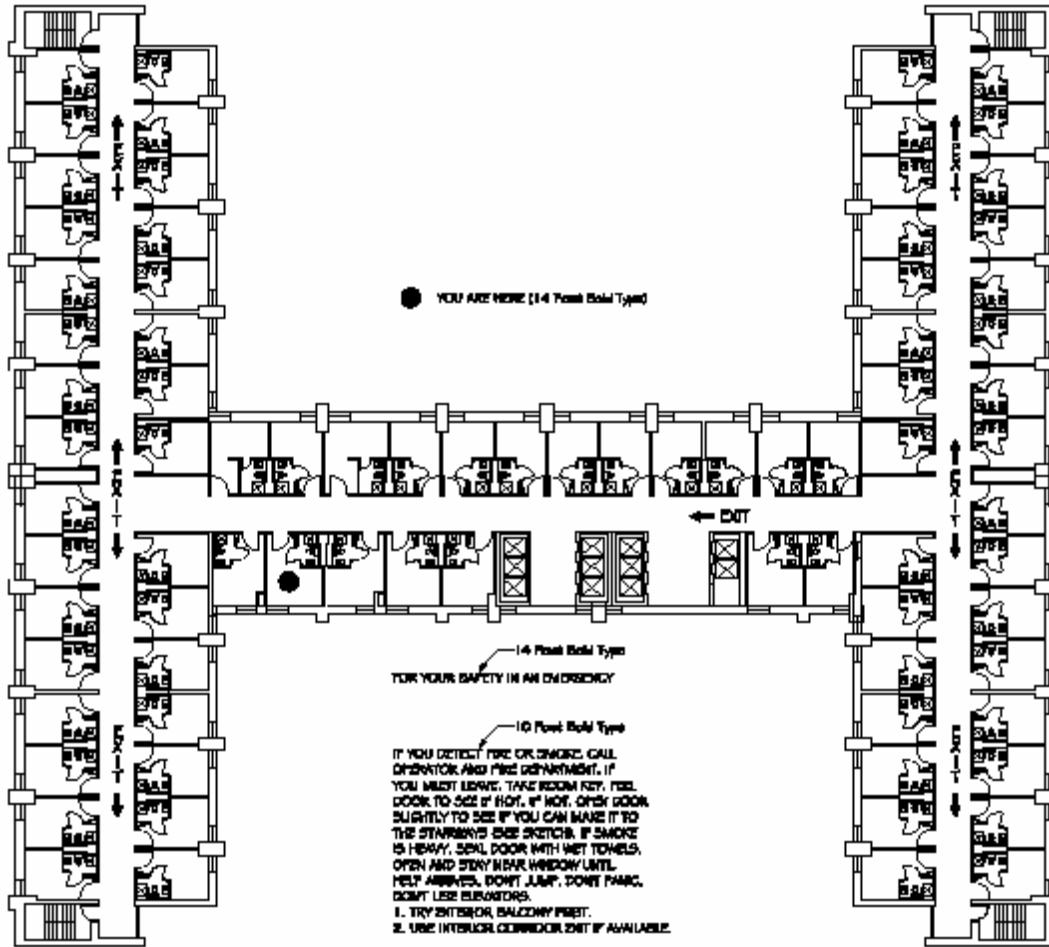
I certify that all sleeping rooms comply with the above code sections.

Business Name: _____

Business Address: _____

Signature/Printed Name: _____ / _____

Date: _____



● YOU ARE HERE (14 Point Bold Type)

14 Point Bold Type
 FOR YOUR SAFETY IN AN EMERGENCY

10 Point Bold Type
 IF YOU DETECT FIRE OR SMOKE, CALL DIRECTOR AND FIRE DEPARTMENT. IF YOU MUST LEAVE, TAKE ROOM KEY, FEE, DOOR TO SEE IF HOT, IF HOT, OPEN DOOR SLIGHTLY TO SEE IF YOU CAN MAKE IT TO THE STAIRWAYS SIDE SWITCH. IF SMOKE IS HEAVY, SEAL DOOR WITH WET TOWELS, OPEN AND STAY NEAR WINDOW UNTIL HELP ARRIVES. DON'T JUMP, DON'T PANIC, DON'T USE ELEVATORS.
 1. TRY EXTERIOR BALCONY FIRST.
 2. USE INTERIOR CORRIDOR EXIT IF AVAILABLE.

10 Point Bold Type
 TO FIRE EXIT: Indicate the number of doors to the left and/or right to nearest fire exit.

14 Point Bold Type
 PHONE # LOCAL FIRE DEPARTMENT: _____
 PHONE # MANAGERS OFFICE: _____
 (575) 462-2511 (575)