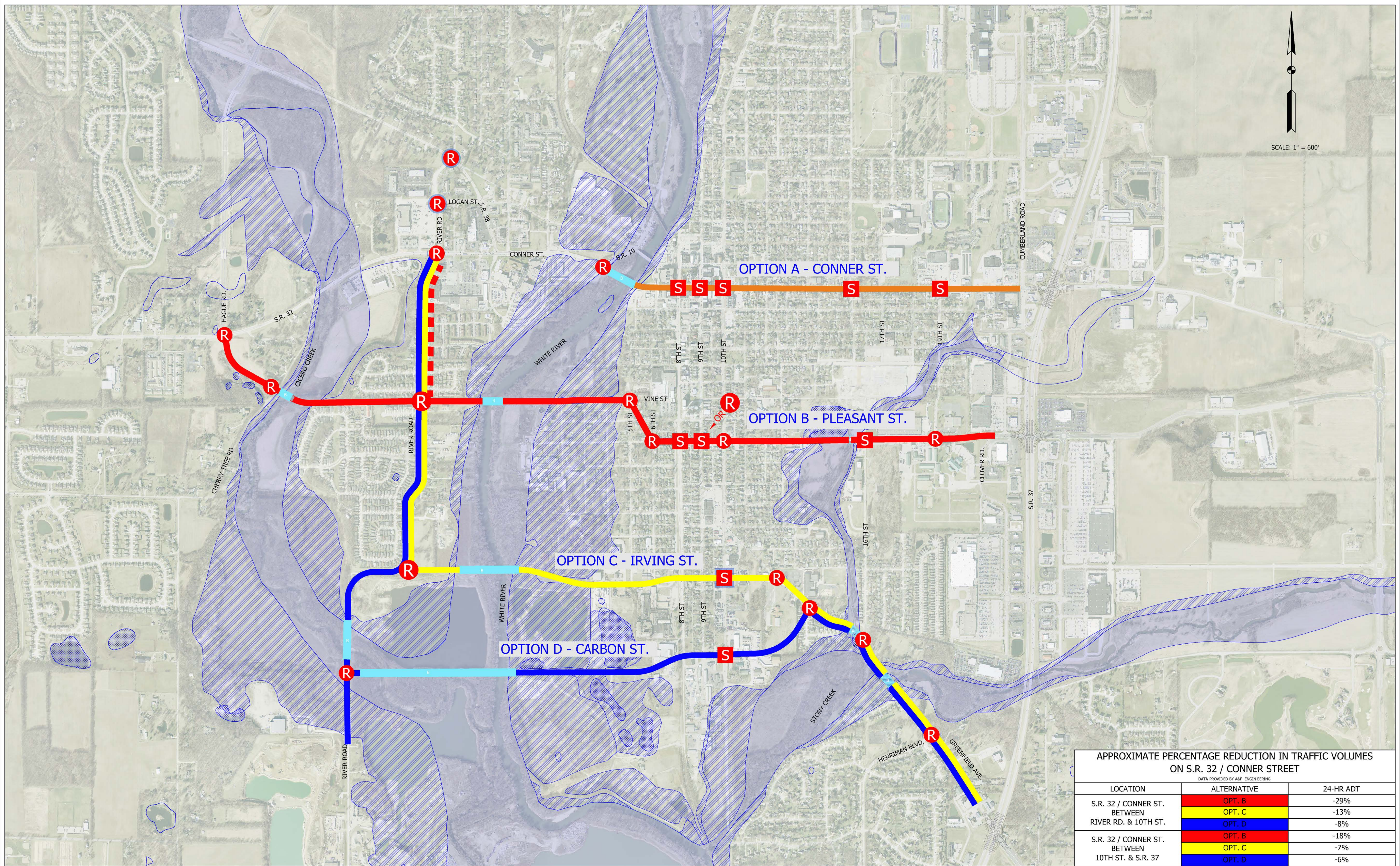


SCALE: 1" = 600'



APPROXIMATE PERCENTAGE REDUCTION IN TRAFFIC VOLUMES ON S.R. 32 / CONNER STREET

DATA PROVIDED BY A&F ENGINEERING

LOCATION	ALTERNATIVE	24-HR ADT
S.R. 32 / CONNER ST. BETWEEN RIVER RD. & 10TH ST.	OPT. B	-29%
	OPT. C	-13%
S.R. 32 / CONNER ST. BETWEEN 10TH ST. & S.R. 37	OPT. D	-8%
	OPT. B	-18%
	OPT. C	-7%
	OPT. D	-6%

S SIGNALIZED INTERSECTION	OPTION A - CONNER STREET	B PROPOSED BRIDGE	FEMA FLOODWAY (APPROX.)
R ROUNDABOUT INTERSECTION	OPTION B - PLEASANT STREET	E EXISTING BRIDGE	FEMA SPECIAL FLOOD HAZARD AREA (APPROX.)
	OPTION C - IRVING STREET		WETLAND (APPROX.)
	OPTION D - CARBON STREET		

**CITY OF NOBLESVILLE
EAST - WEST CORRIDOR STUDY**

