



February 9, 2017

Residents adjacent to Midland Trace Trail:

RE: Midland Trace Trail between Gray Road and Hazel Dell Road

You have likely noticed preliminary construction activities already underway. Starting next week, Crider and Crider, Inc. will be working for the City to construct the Midland Trace Trail from Gray Road to Hazel Dell Road. The new trail will be twelve feet wide.

We apologize for any temporary inconvenience created during construction. Daily on-site coordination between the City and the contractors will occur to minimize the impact of this construction activity. Initial tree clearing work is anticipated to be completed between now and the middle of March. The City has hired an arborist to review the clearing plans and review the site with the contractor to save any quality non-invasive trees that are outside of the footprint required to build the trail. The remainder of earthwork, grading, and paving is to start after mid-April once the weather breaks and the last parcels have been secured. Work is to be substantially completed by mid-September 2017.

A summary of the arborist's clearing report is available online at:
http://www.cityofnoblesville.org/egov/documents/1486667702_11623.pdf

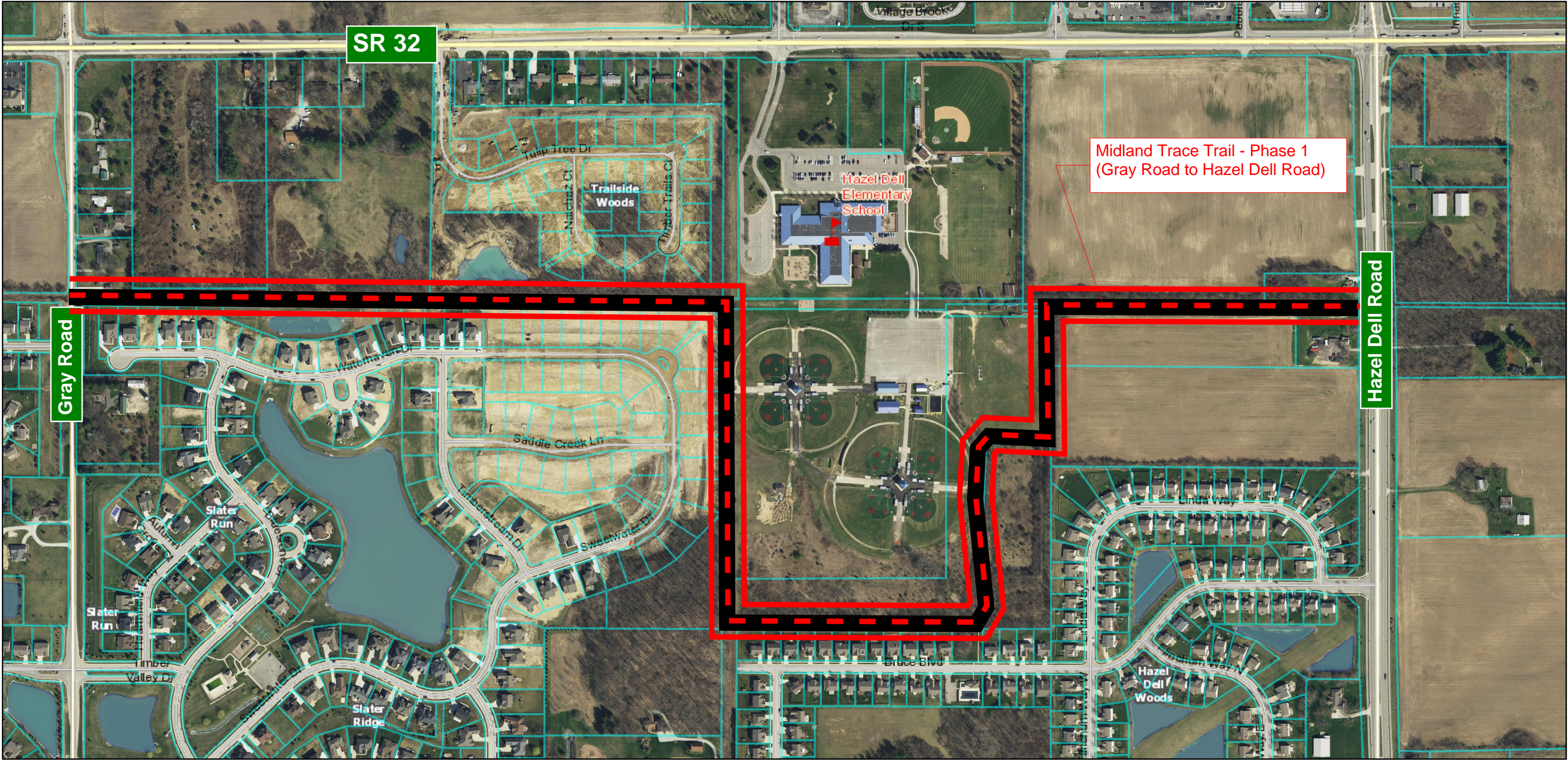
If you have any questions, please feel free to call me at our office at 317-776-6330.

Sincerely,
CITY OF NOBLESVILLE

John Beery, PE, - City Engineer
Ph: (317) 776-6330, jbeery@noblesville.in.us

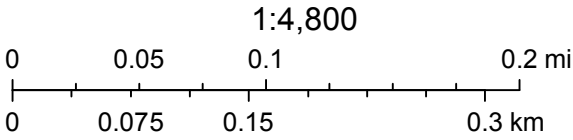
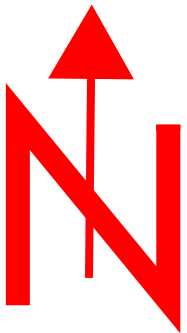
Enclosures: Project Exhibit

City of Noblesville



February 9, 2017

 Parcels



Basemap information here