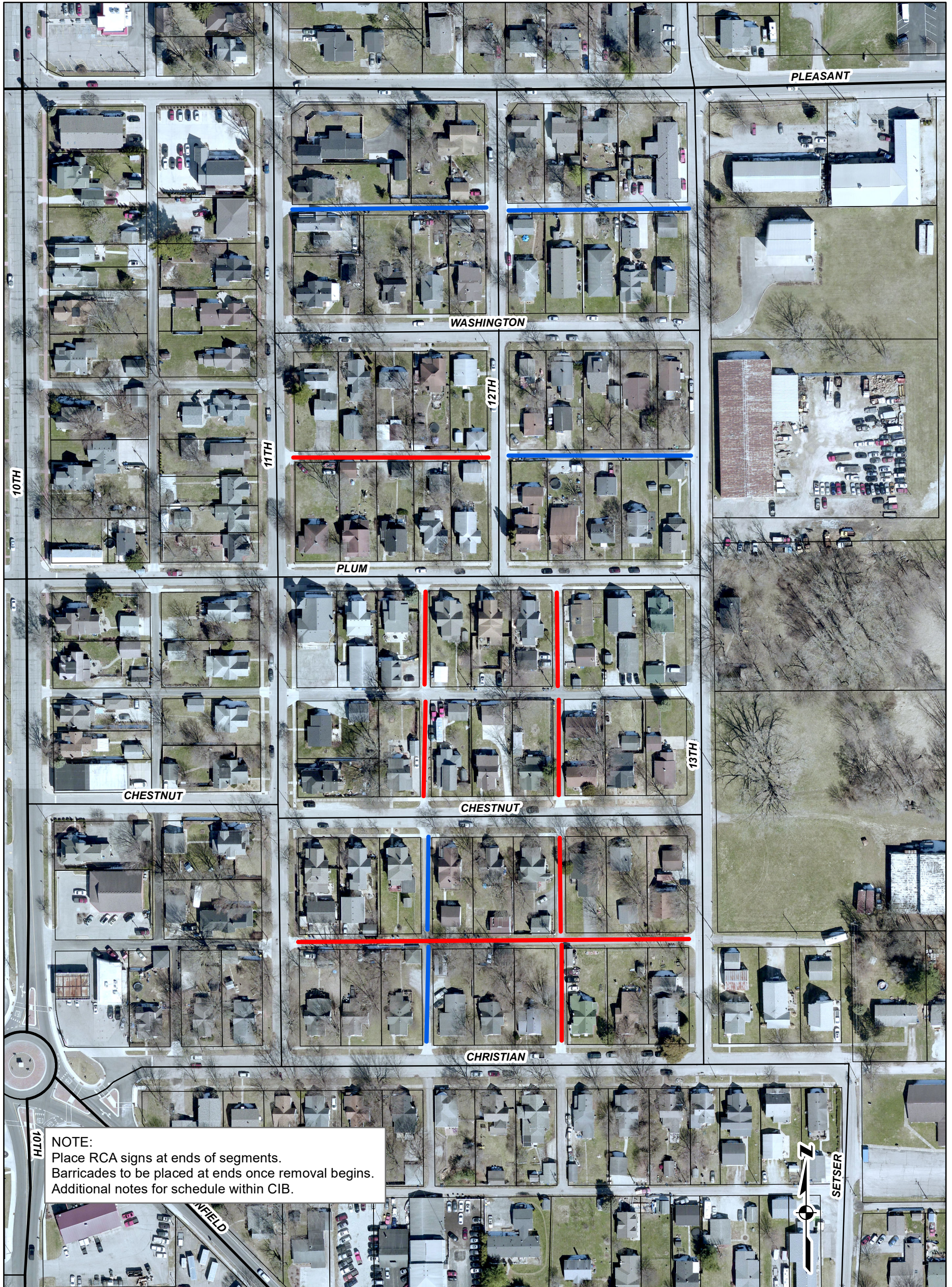


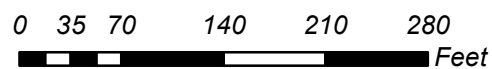
City of Noblesville 2019 Street Rehabilitation Alternate Bid 1 Alley Location Map



NOTE:
Place RCA signs at ends of segments.
Barricades to be placed at ends once removal begins.
Additional notes for schedule within CIB.

— 5" Mill Removal, 4" HMA Base, 1.5" HMA Surface

— 1.5" HMA Surface



D Alley Approach, 8" PCCP on 6" Compacted #53 Stone

Prepared by:
CITY OF NOBLESVILLE
Department of Engineering